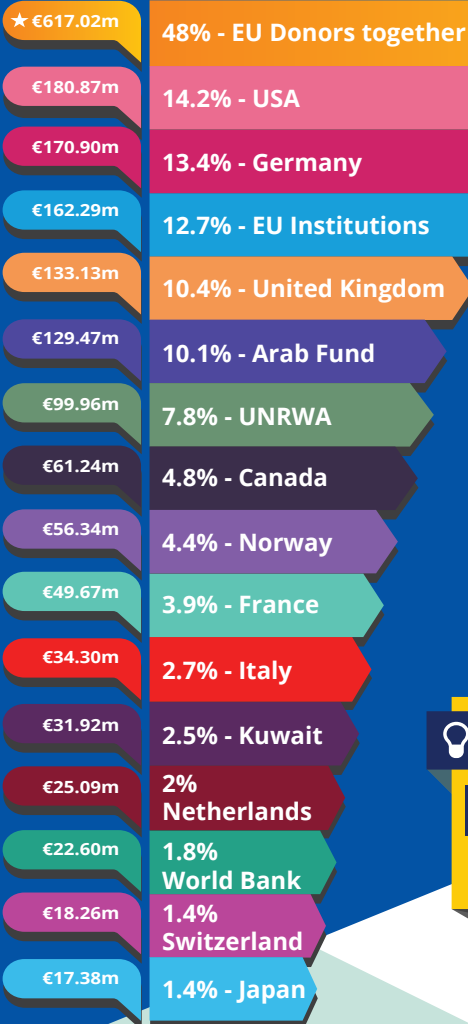




Lebanon largest donors in 2017



€650.78m
Total EU ODA

EU donors together €617.02m
48% of bilateral flows

WB (IDA)
€6.45m

UN
agencies
€27.31m

EU non-bilateral aid

LEBANON FACTS

Upper-Middle
Income Country
(World Bank classification)

Aid as % share of GDP

*Government revenue: Revenue consists of
taxes, social contributions, grants
receivable, and other revenue.

GDP €45.66bn

Government revenue 22.10%

Remittances 13.75%

FDI 4.97%

Total ODA 2.80%

EU ODA 1.35%

The main sectors funded by the EU

€96.04m

Reconstruction
Relief &
Rehabilitation

€76.62m

Government
& Civil
Society

€176.67m

Emergency
Response

€119.71m

Education

EU bilateral aid implemented through

UN agencies
€232.39m

WB Group
€8.71m

Other multilaterals
€2.50m

The EU and the Member States channel funds through a range of international organisations.
This infographic may not fully capture all of the funds.

For more information contact:

EEAS JOINT PROGRAMMING:
joint-programming-support@eeas.europa.eu

EU AID EXPLORER:
https://euaidexplorer.ec.europa.eu

DEVCO JOINT PROGRAMMING:
devco-joint-programming-support@ec.europa.eu

Sources:

OECD DAC CRS: <https://stats.oecd.org/org/qwids/>
MF WEO 2018 Database:
<http://www.imf.org/external/pubs/ft/weo/2018/01/weodata/index.aspx>
Exchange rate: \$1 = €0.887397 (OECD exchange rate for 2017)

JOINT PROGRAMMING TRACKER:
<https://europa.eu/capacity4dev/joint-programming-tracker>

Note: EU refers to EU Institutions and Member States together

