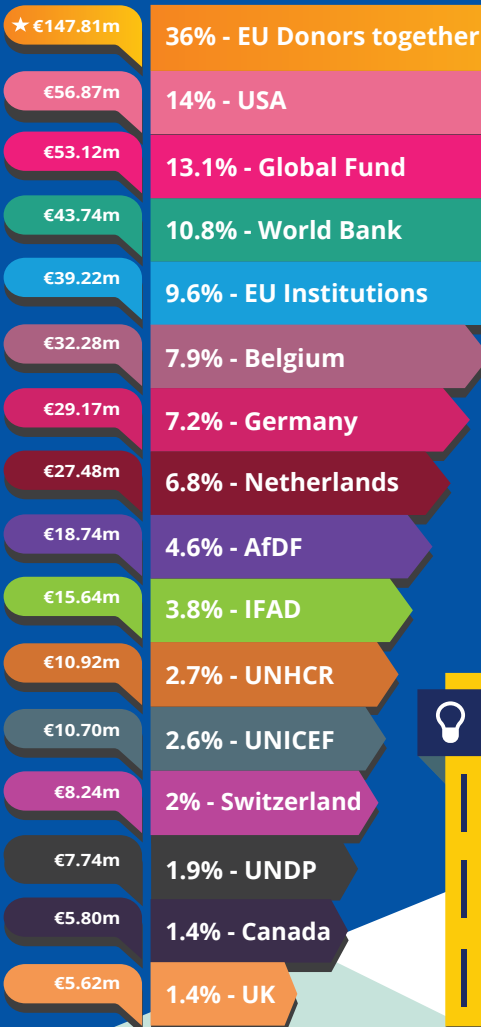




Burundi largest donors in 2017



€176.64m
Total EU ODA

EU donors together €147.81m
36% of bilateral flows

WB (IDA)
€12.48m

UN
agencies
€16.35m

EU non-bilateral aid

BURUNDI FACTS

- Low Income Country
(World Bank classification)
- Least Developed Country
(UN classification)
- Fragile state
(OECD fragility index) (WB, 2018)



Aid as % share of GDP

*Government revenue: Revenue consists of taxes, social contributions, grants receivable, and other revenue.

GDP €3.01bn

Government revenue 14.02%

Remittances 1%

FDI 0.01%

Total ODA 13.49%

EU ODA 4.90%

The main sectors funded by the EU

€25.69m

Government
& Civil
Society

€25.48m

Health

€27.89m

Agriculture,
Forestry
& Fishing

EU bilateral aid implemented through

UN agencies
€19.59m

Other Multilaterals
€2.65m

The EU and the Member States channel funds through a range of international organisations.
This infographic may not fully capture all of the funds.

For more information contact:

EEAS JOINT PROGRAMMING:
joint-programming-support@eeas.europa.eu

EU AID EXPLORER:
https://euaidexplorer.ec.europa.eu

DEVCO JOINT PROGRAMMING:
devco-joint-programming-support@ec.europa.eu

Sources:

OECD DAC CRS: <https://stats.oecd.org/org/qwids/>
MF WEO 2018 Database:
<http://www.imf.org/external/pubs/ft/weo/2018/01/weodata/index.aspx>
Exchange rate: \$1 = €0.887397 (OECD exchange rate for 2017)

JOINT PROGRAMMING TRACKER:
<https://europa.eu/capacity4dev/joint-programming-tracker>

Note: EU refers to EU Institutions and Member States together

