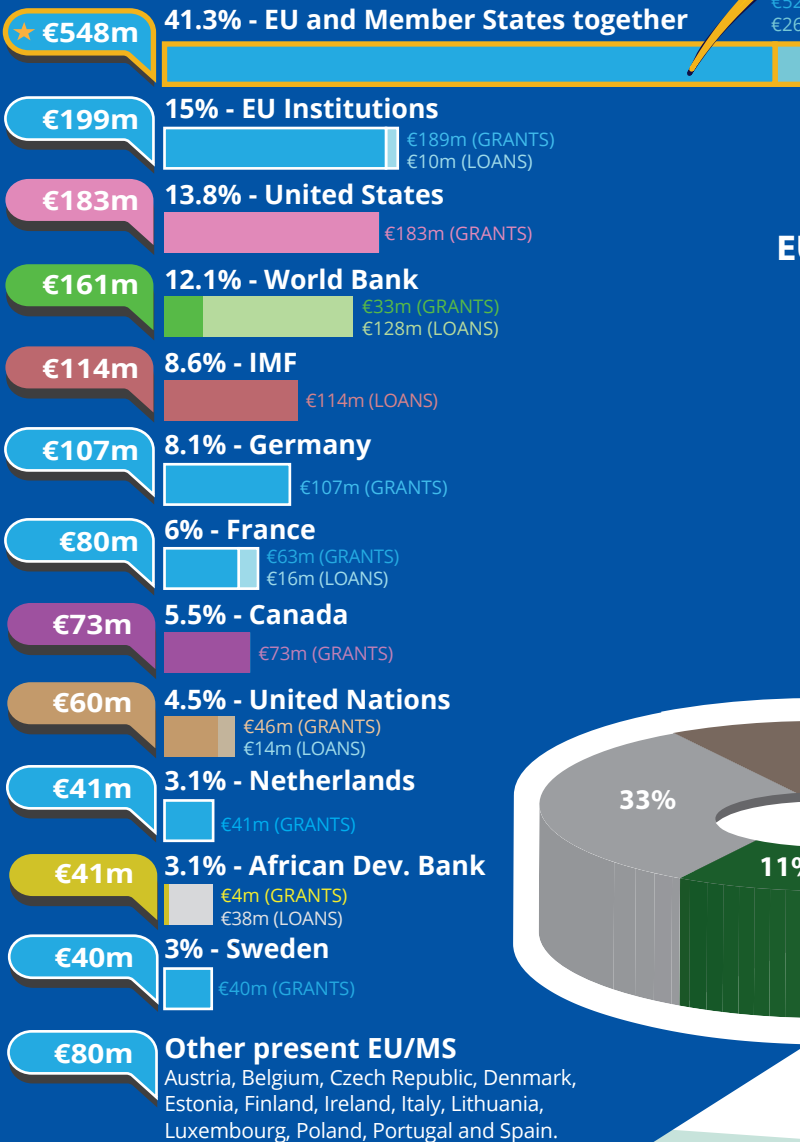
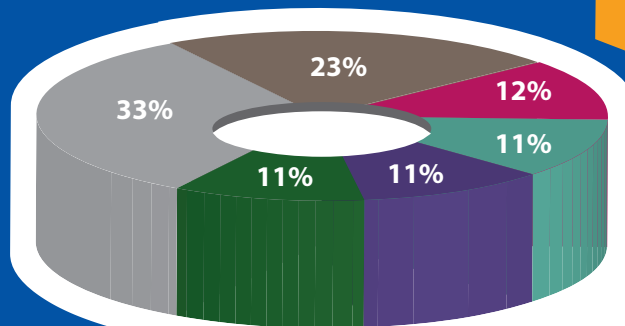
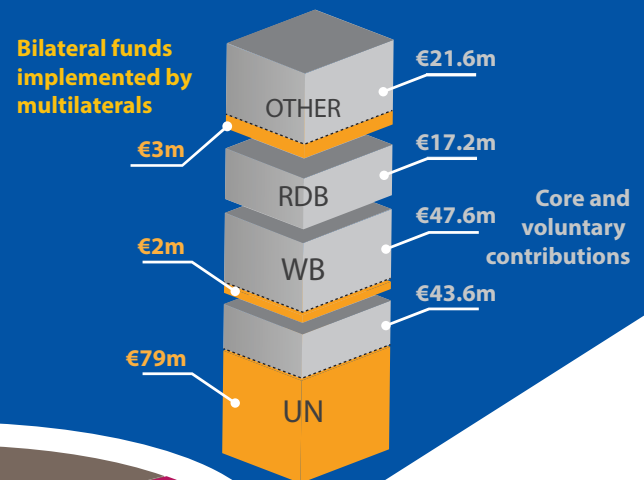




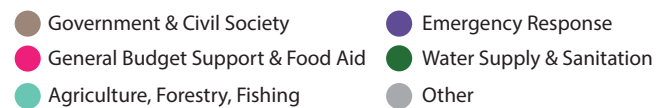
Mali's partners in 2018*



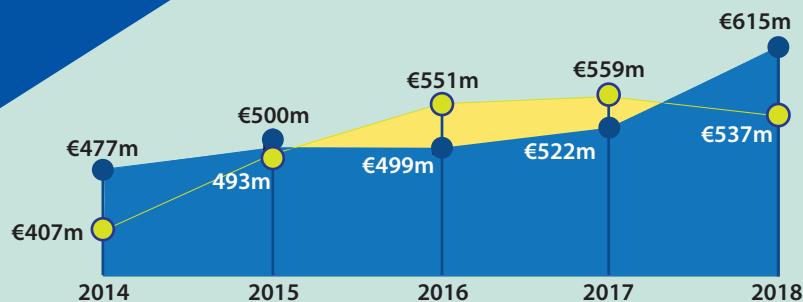
EU/Member States funds through multilaterals



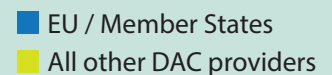
The main sectors funded by the EU/Member States



*Based on ODA disbursements
in the particular year.



EU/Member States ODA trends 2014-2018 (€)



For more information contact:

EEAS JOINT PROGRAMMING:
joint-programming-support@eeas.europa.eu

EU AID EXPLORER:
<https://euaidexplorer.ec.europa.eu>

DEVCO JOINT PROGRAMMING:
devco-joint-programming-support@ec.europa.eu

NEAR JOINT PROGRAMMING
NEAR-JOINT-PROGRAMMING@ec.europa.eu

Sources:

OECD DAC CRS
IMF WEO 2018 Database

Exchange rate: \$1 = €0.8473
(OECD exchange rate for 2018)

JOINT PROGRAMMING TRACKER:

<https://europa.eu/capacity4dev/joint-programming-tracker>

Note: EU/MS refers to the EU and its Member States together.

Differences between figures for total EU/MS ODA and ODA trends are due to use of different OECD data sources (with higher level of granularity in 2018).

RDBs = Regional Development Banks.





Investing in Sustainable Development in Mali



GDP €14.5 bn ↑

GDP per capita
Fiscal position

€762.3 ↑
-1.7% ↑



Population 19.08m ↑

Multidimensional poverty

78.1%

Human Development Index (UN)

Index
Ranking (of 189 countries)

0.43 ↑
184

Low Income Country (World Bank classification)

Least Developed Country (UN classification)

Fragile State (World Bank classification)

Trade figures (% of GDP)

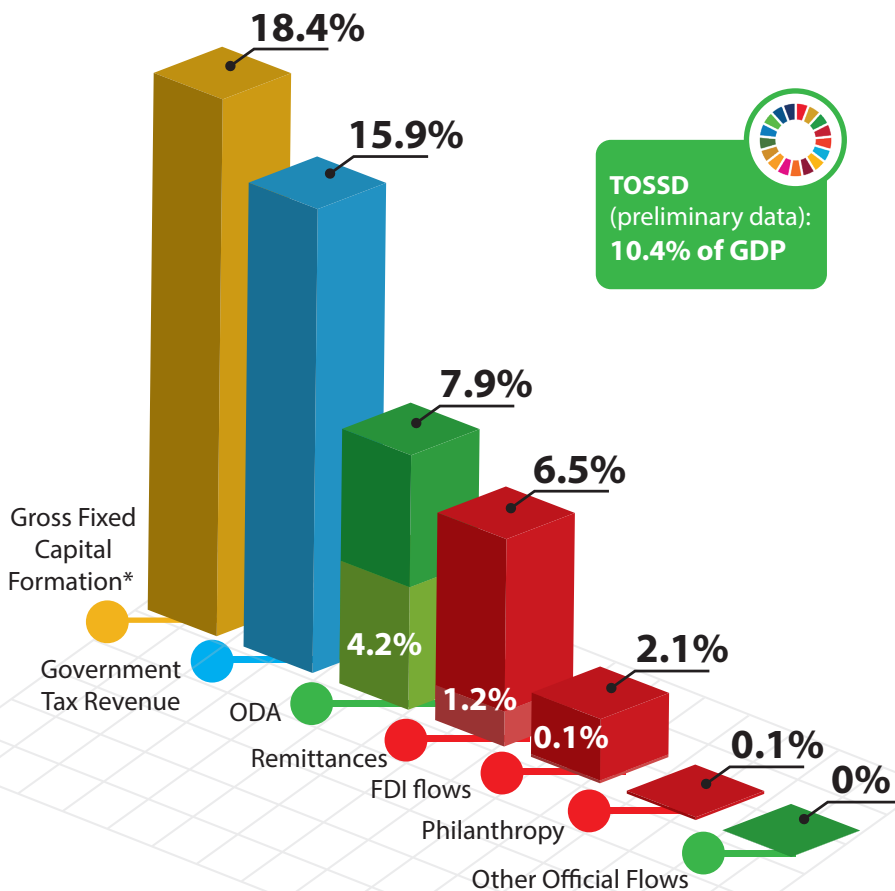
Imports of goods 23.5 ↑
Exports of goods 18.9 ↑
Imports of services 13 ↑
Exports of services 3.3 ↑

Ease of doing business index

Index 52.9 ↑
Ranking (of 190 countries) 148

* Compared to average of previous years

Financing for Development as % share of GDP



External debt stock €4.1bn

Multilaterals

65.9%

Private

0%

Non-Paris 29.4%

Paris 4.7%

Bilateral

35.1%

Total Debt as share of GDP **28.5%**

Total Debt servicing as share of GDP **1.5%**



For more information contact:

EuropeAid-FINANCING-FOR-SUSTAINABLE-DEVELOPMENT@ec.europa.eu

Exchange rate: \$1 = €0.8473
(OECD exchange rate for 2018)

Sources:

OECD DAC CRS, World Bank WDI
UNDP, EDGAR, JRC, World Bank
Remittances database, Eurostat
and IMF External Debt Statistics

Note: EU/MS refers to the EU and Member States together

For more information on TOSSD: www.tossd.org

*Measure of total investment in the domestic economy (overlap with FDI possible)

Paris refers to debts to the Paris Club of creditors (22 countries)

