



www.eumayors.eu



# The role of the cities in the extension of the Covenant of Mayors in the regions already covered (Europe, Caucasus, Mediterranean)



**Energy efficiency in Sub-Saharan African cities**  
***Towards the Covenant of Mayors in Sub-Saharan Africa***

*Nairobi, Kenya 25 October 2015*

*Eva Baños de Guisasola*

*Policy Advisor CEMR*

*Council of municipalities and regions in Europe*

*Covenant of Mayors Office*





# The Covenant of Mayors?

www.eumayors.eu

- Introduction: Origin of the CoM
- Where are we? Some figures
- Where are we going?
- Role of the cities and supporting structures
- The new CoM 2030





# What is the CoM?

- EU Initiative EU, launched in 2008 (**Communication from 2006**). Support of the European Commission to local and regional authorities to fight against climate change
- Bottom-up approach. Coordinated by networks of cities
- Voluntary action of the signatory cities to go over the EU **20% CO<sub>2</sub>** via the implementation of a SEAP (Sustainable energy action plan)





# Succes



www.eumayors.eu

2008

2015



**6,565** signatories



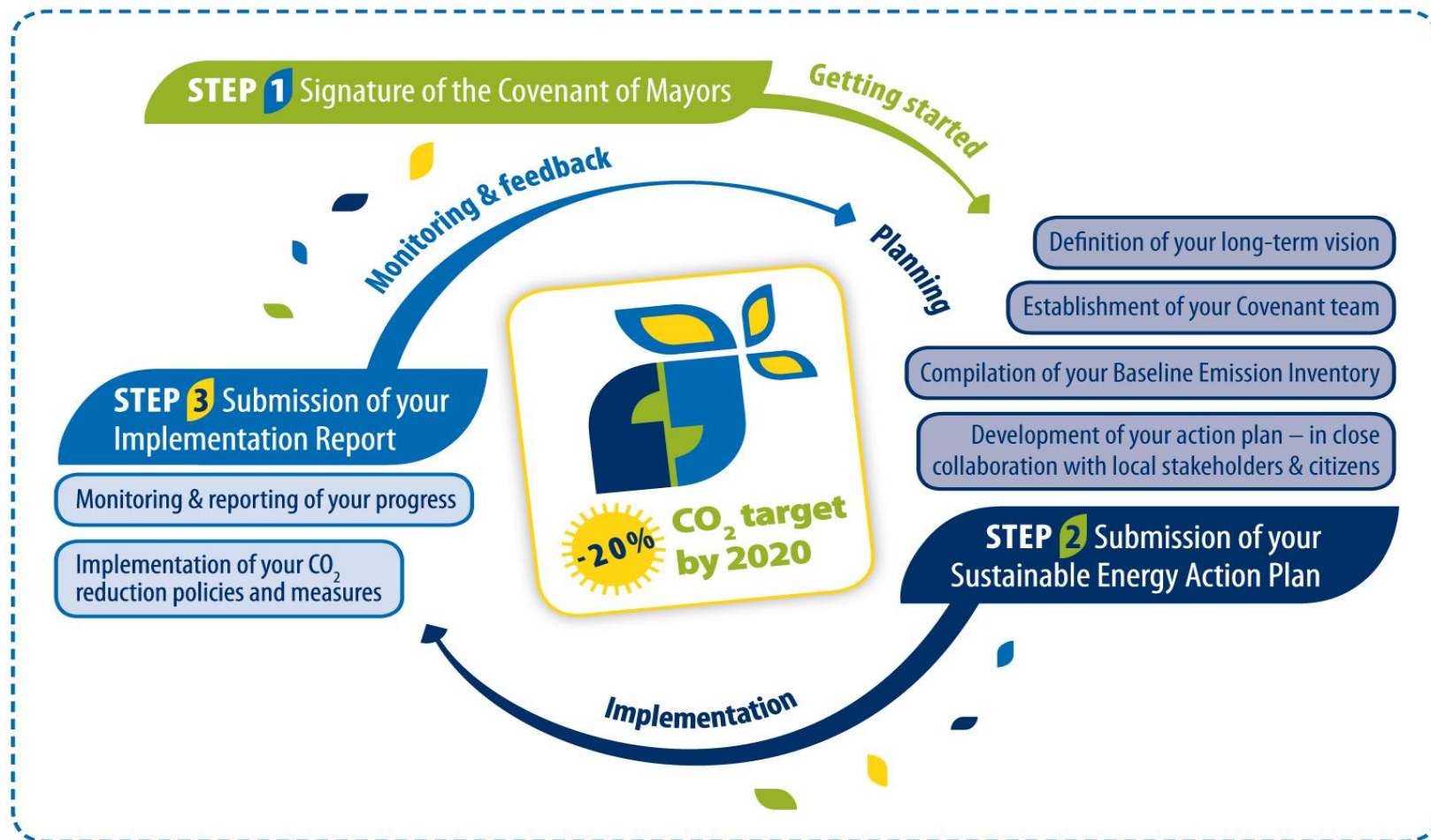
**55** countries

**211 million** citizens





# Steps





# Key figures of SEAPS

www.eumayors.eu



**4,500** SEAPS

**500** Evaluation and  
monitoring reports

Today

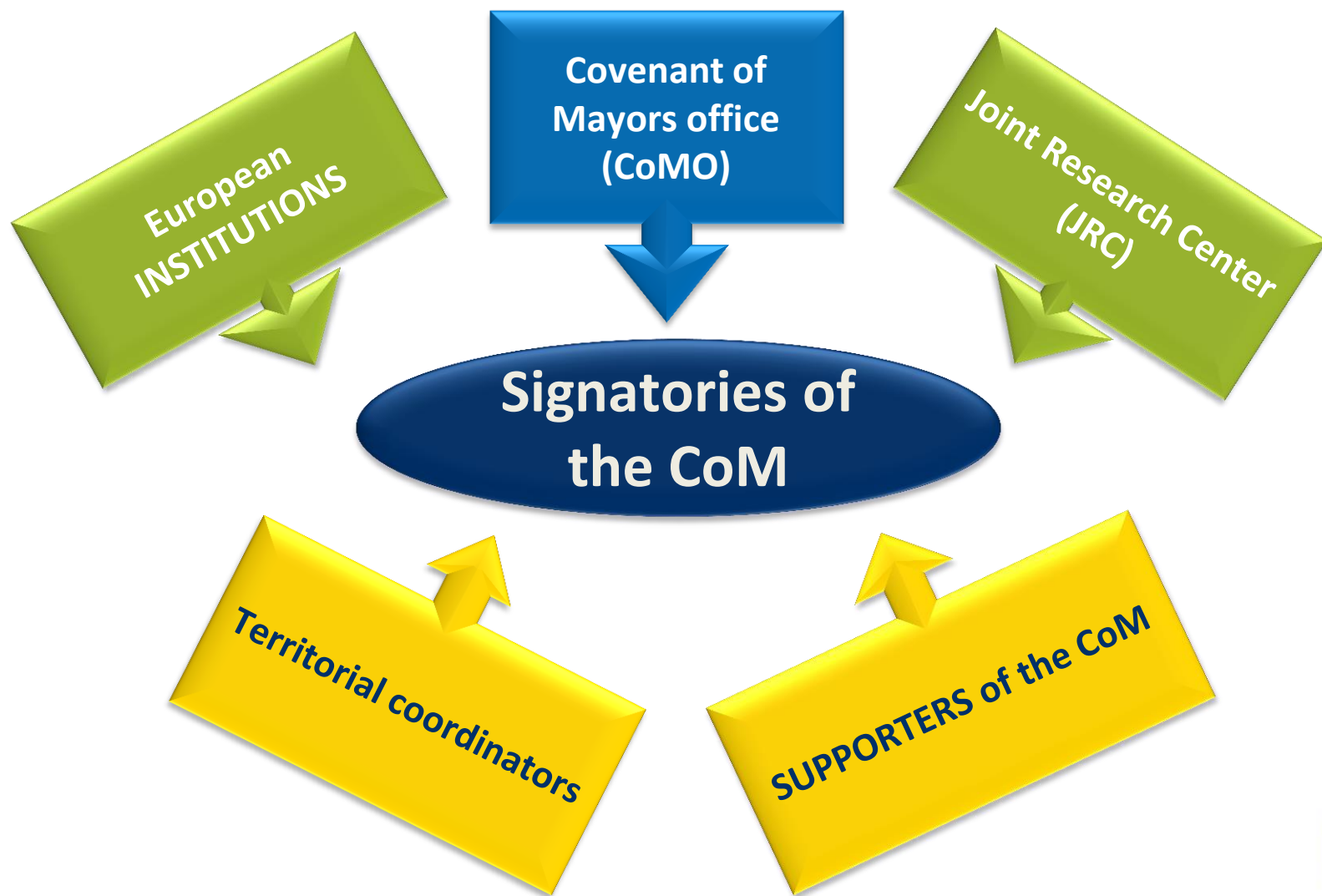
Commitments

by 2020



# A multi governance model – role for cities as facilitator

www.eumayors.eu



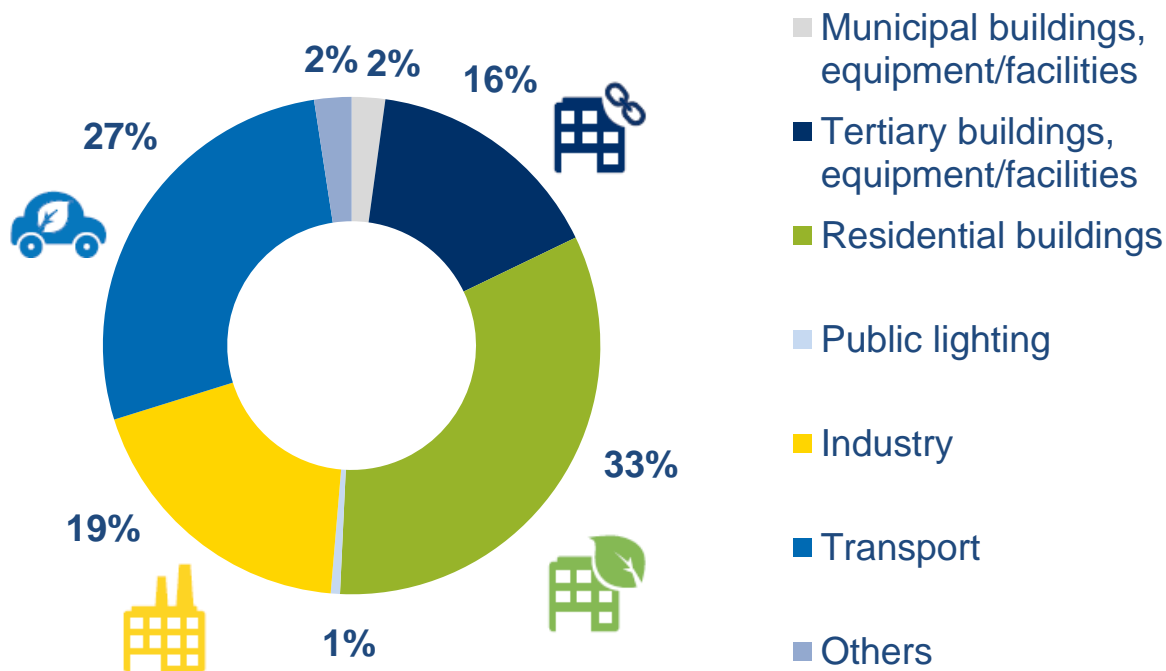




# Where are we ?

Today

## Emissions de CO<sub>2</sub> per sector







# Where are we ?

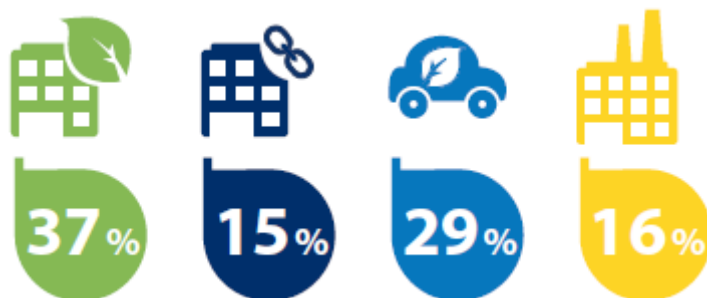
www.eumayors.eu



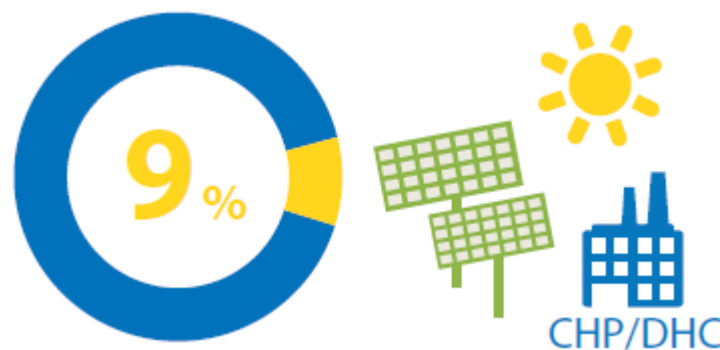
Tonnes CO<sub>2</sub> eq. per capita caused by signatory cities



MWh per capita of the total energy consumed by these cities



Buildings – more than 1/2 of the energy used and 1/3 transports



% of the general consumption – produced at local level



# Where are we going ?

by 2020



Contribution of signatories to EU % CO<sub>2</sub>



15%

Of the EU-28 CO<sub>2</sub> emissions reduction  
2020 target can be achieved by actions  
undertaken by signatory cities.



# Role of cities - crucial

- Know the problem and solutions
- Contact with the local reality
- React quickly on the territory
- Get mobilized quickly
- Exchange of good practices
- Direct link with citizens
- Interlocuteur with all levels of governance
- Contribution to mitigation and adaptation actions at national level



# Exemples of cities' actions

- Identification of extreme variables - Barcelone
- Adoption of an approach based on different scenarios and establishment of an environmental evaluation strategy - Dublin
- Collection and analysis of data - Worms
- Gathering all local actors around the table - Mulhouse
- Developmlent of indicators - Muranello



# Examples of supporting structures

- 1st conference of LAs – Province of Huelva
- Local agency for energy – Province of Chieti
- Business sector – Rhine Neckar Metropolitan Region
- Energy Week – Province of Almeria
- Public committee – Province of Andalousie

***\* \*\*Echanges of good practices,  
networking,capacity building\*\*\*\****





# CoM Est and CoM CESMED



- Similar approaches
- CoM Est  
([http://www.uhodameriv.eu/index\\_uk.html](http://www.uhodameriv.eu/index_uk.html))  
collaboration between the national and local levels, 11 countries
- CESMED (<http://www.ces-med.eu/>): +/- 12 cities, 9 countries – inspiration for other cities in Africa?



**2008:**  
Start of the CoM

- ✓ **6500+** signatories, 55 countries
- ✓ **200 million** hab represented (i.e. 1/3 EU population)
- ✓ **28%** engagements CO2 reduction



**2014:**  
Start of Mayors  
Adapt

- ✓ **150** signatories on 1<sup>st</sup> year, **23** countries
- ✓ **30 million** citizens represented

**15 October 2015:**  
**New CoM mitigation & adaptation 2030.**  
**Vision for 2050**





## ...and then ? global CoM

- International framework for the CoM + contribution to COP21
- EU- collaboration with African cities
- Sharing of best practices
- CoM as a leading example
- Objective : use of energy, exchange, sharing methodologies
- Capacity building
- Reinforcement of the governance
- Tool to reduce emissions
- Reinforce the existing networks in Africa



***Thanks a lot***  
***Questions, more information?***

[eva.banosdeguisasola@ccre.cemr.org](mailto:eva.banosdeguisasola@ccre.cemr.org)

[www.eumayors.eu](http://www.eumayors.eu) (in all official languages)

[www.mayors-adapt.eu](http://www.mayors-adapt.eu)

