



Green Deal Country Fiche

Togo

Population in 2019
8,08 million habitants

Projected population in 2050
15,42 million habitants

Surface
56,8 thousands km²

Population density (2019)
142 habitants per km²

GDP per capita
679,29 US\$ (2019)

Population living below 1,90 \$/day
51,10 % in 2015

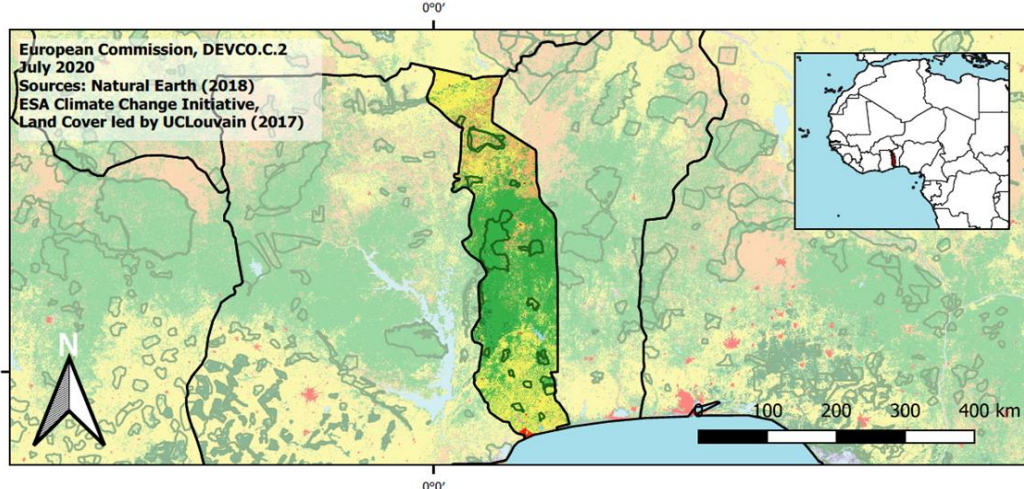
Human Development Index
0,52 (2019, UN target: >0,8)

Legend

Main Protected Areas

Land Cover Classes

- Cropland rainfed
- Cropland irrigated
- Mosaic crops/nat.veg
- Tropical dense forest
- Deciduous forest
- Coniferous forest
- Mixed forest
- Shrubland
- Grassland
- Sparse vegetation
- Swamp forest
- Mangrove
- Swamps
- Urban areas
- Bare areas
- Water bodies
- Permanent snow and ice



Share of global emissions (2018)
0,009%

NDC: Mitigation Summary

(NDC from 2017)

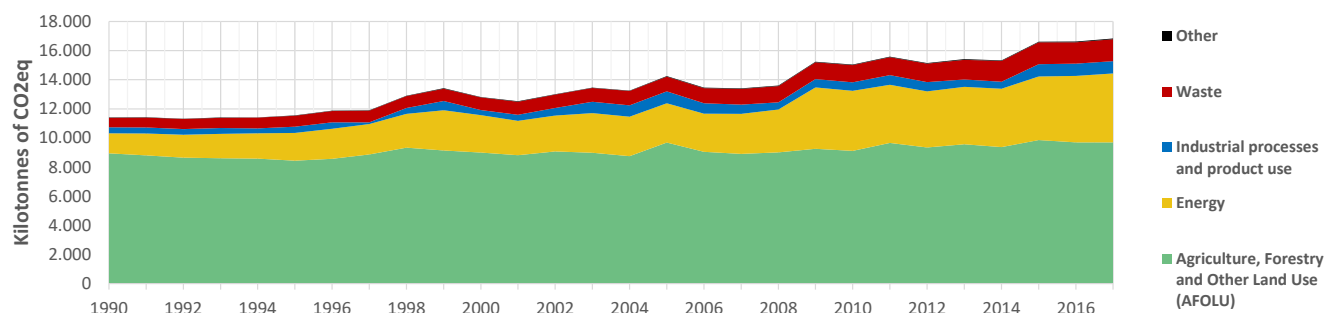
Togo could reduce its GHG emissions by 31.4% compared to the projections if no measures were to be applied (11.4% unconditional). Implementing all actions of the NDC would cost an estimated USD 3.54 billion.

INTPA "NDC Group"

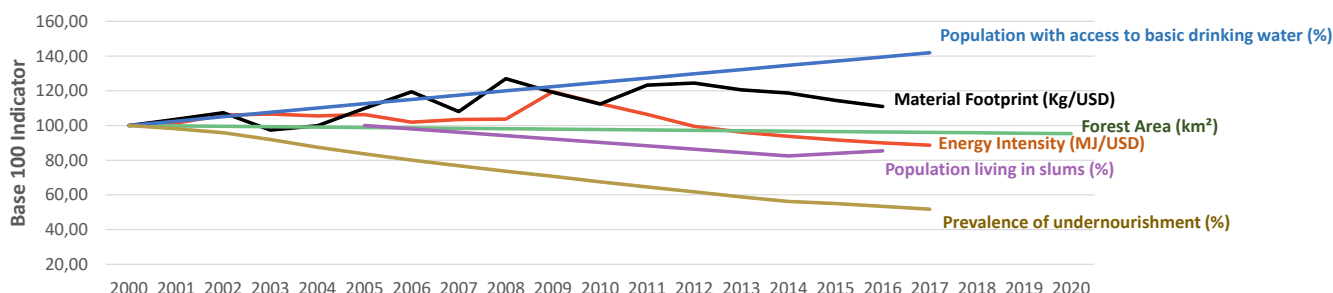
Group 3 - Suggested focus on adaptation for EU cooperation

Pillar	Indicator Name and Unit	Value	Interpretation
Green, circular and low-carbon economy	Ecological footprint (Consumption in global hectares per capita, 2017)	1,09 gh/cap	Within the global sustainable threshold of 1,6 gha per capita
	Recycling and composting rate (% of total solid waste, 2017)	<5%	No or very low rate of recycling and composting (min EU MS = 7%)
	Water productivity (USD of GDP per m ³ of water extracted, 2010)	8,38 \$/m ³	Low water productivity (minimum EU MS value : 10 \$/m ³)
	Material footprint (Kg of raw materials used per USD of GDP, 2010)	3,96 kg/\$	Highly resource-inefficient production and consumption practices
	Sustainable Consumption and Production Policy Framework (2017)	C2	No SCP policy instrument or coordination mechanism reported
	Change in emissions (production) vs change in GDP (2007-2017)	+22% / +81%	Relative decoupling: emissions increased, but slower than GDP
Biodiversity & Forests	Terrestrial protected areas (% of total land area, 2020)	25,04%	CBD Target has been met for terrestrial ecosystems (17% by 2020)
	Threatened species (% of total evaluated species, 2019)	3,66%	Further conservation efforts needed to secure SDG Target 15.5
	Population around protected areas (% total pop., 10km buffer, 2015)	57,06%	Very significant share of population - Landscape approach is key
	Forest area change (% change between 2015 and 2020)	-1,21 %	SDG Target 15.2 not achieved (halt deforestation by 2020)
	Sustainable forest management (% area with long-term plan, 2020)	NA	No Data
	Employment in forestry (number of full-time equivalents, 2015)	25340 FTE	Medium share of employment (0,5%-1% of total labor force, 2015)
Green and Smart Cities	Proportion of urban population living in slums (% in 2016)	53,00%	Significant efforts needed for SDG Target 11.1 (upgrade by 2030)
	Satisfaction with public transport (% satisfied, 2018)	26,27%	Low satisfaction with public transport (UN SDSN interpretation)
	Solid waste uncollected or dumped in the open (% of total, 2017)	99%	Significant efforts are needed to meet SDG Target 11.6
	Wastewater receiving primary treatment (% of total)	0,00%	Significant efforts needed to ensure at least full primary treatment
	Urban air pollution (µg/m ³ of PM 2.5 particules, 2016)	31,22 µg/m ³	Above EU 2020 target (18µg/m ³) but below US Standard (35µg/m ³)
	Alignment of national DRR strategies to Sendai Framework (0-1, 2018)	0,45	Limited alignment with the Sendai Framework (0 to < 0,5)
Sustainable Energy	Access to electricity (% of population, 2018)	51,35%	Significant efforts needed to meet SDG Target 7.1 of 100% by 2030
	Renewable energy (% of total energy consumption, 2016)	71,63%	High share of renewables in total energy consumption
	Renewable electricity (% of electricity production, 2015)	75,31%	High share of renewable electricity
	Access to clean cooking (% of total population with access, 2018)	7,90%	Significant efforts needed for universal access to clean cooking
	Fossil fuel subsidies (% of GDP, 2015)	0,00%	No fossil-fuel subsidies, SDG Target 12.C achieved
	Energy Intensity (megajoules per constant 2011 PPP GDP, 2017)	12,88 MJ/\$	Energy Intensity is above all EU-27 MS values
Food systems: from Farms to Forks	Rural poverty (% of rural population below \$90 a day, 2015)	68,70%	Significant efforts needed to achieve SDG Target 1.1 (0% by 2030)
	Food security (% of pop in moderate or severe insecurity, 2016-2018)	68,10%	Significant efforts needed to meet SDG Target 2.1 of 0% by 2030
	Nutrition (% of children under 5 who are stunted, 2017)	23,80%	Significant efforts needed to meet SDG Target 2.2 of 0% by 2030
	Fertilizer consumption (kg per hectare, 2016)	11,03 kg/ha	Below lowest EU MS value (60 kg/ha in Romania)
	Land degradation (national area with declining productivity 1999-2013)	9,01%	Progress is still needed to meet SDG Target 15.3 of 0% by 2030
	Agriculture and FOLU share of emissions (% of CO2eq in 2017)	57,63%	High share of emissions - Key sector for climate mitigation
Water & Oceans	Population using at least basic drinking water (% of pop., 2017)	65,13%	Further progress needed to meet SDG Target 6.1 (100% by 2030)
	Population using at least basic sanitation services (% of pop., 2017)	16,10%	Significant efforts needed to meet SDG Target 6.2 (100% by 2030)
	Water scarcity (m ³ of renewable freshwater per capita, 2014)	1591 m ³ /cap	Water shortages may appear regularly
	Water stress (water withdrawal as % of total available water, 2014)	1,77%	Low water stress (less than 25% of resource extraction)
	Marine protected areas (% of total marine area, 2020)	0,18%	Significant efforts needed to achieve CBD Target of 10% by 2020
	Fish stocks overexploited or collapsed (% of fish stocks, 2014)	No Data	No Data

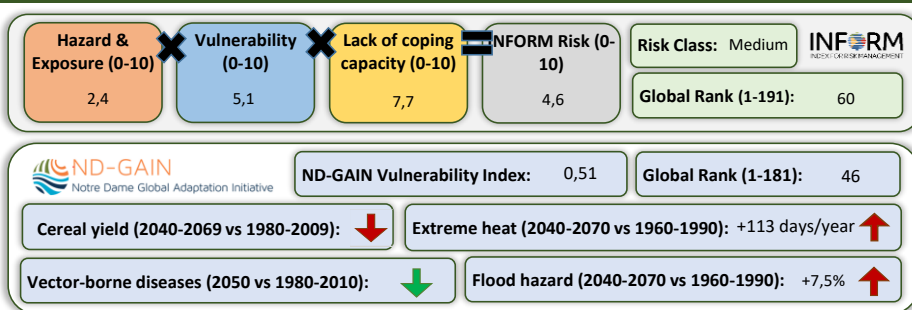
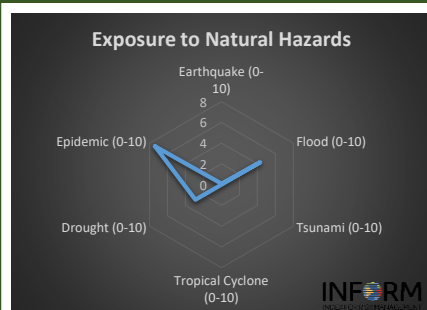
Greenhouse Gas Emission History (Production-based)



Historic Trends of selected indicators per Green Deal Pillar (Base 100)



Climate Adaptation Needs



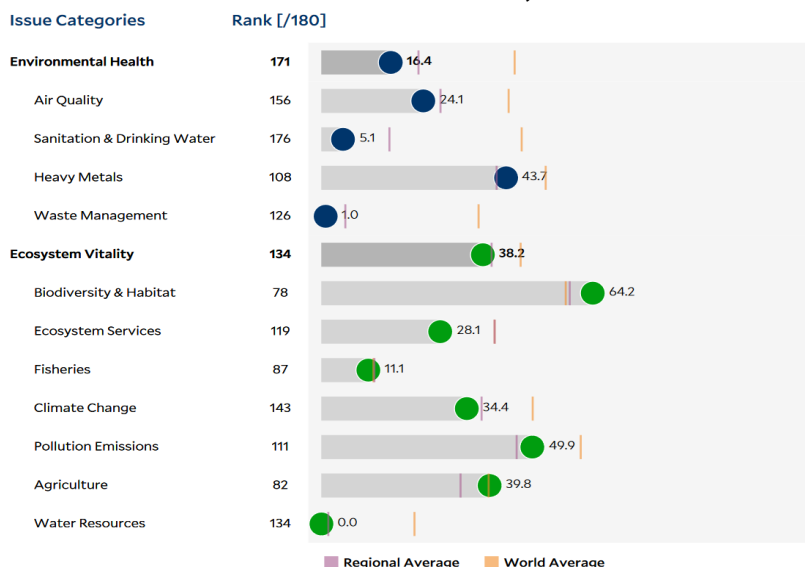
Environmental Performance Index 2020

2020 EPI Country Rank (out of 180)

159

2020 EPI Score [0=worst, 100=best]

29,5



SDG Index 2020

(UN SDSN & Bertelsmann Stiftung)

