



Green Deal Country Fiche

Somalia

Population in 2019
15,44 million habitants

Projected population in 2050
34,92 million habitants

Surface
637,7 thousands km²

Population density (2019)
24 habitants per km²

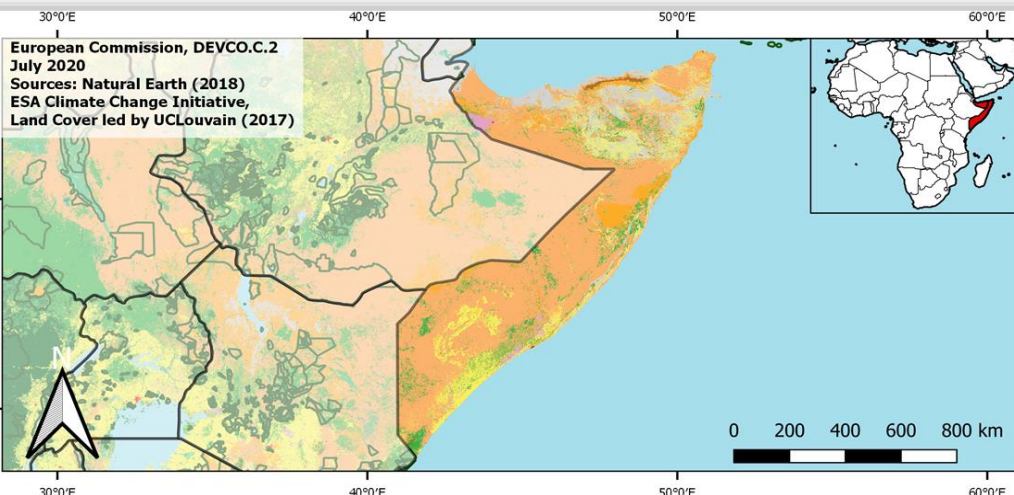
GDP per capita
NA NA

Population living below 1,90 \$/day
NA

Human Development Index
NA (2019, UN target: >0,8)

Legend

- Main Protected Areas
- Land Cover Classes**
- Cropland rainfed
- Cropland irrigated
- Mosaic crops/nat.veg
- Tropical dense forest
- Deciduous forest
- Coniferous forest
- Mixed forest
- Shrubland
- Grassland
- Sparse vegetation
- Swamp forest
- Mangrove
- Swamps
- Urban areas
- Bare areas
- Water bodies
- Permanent snow and ice



Share of global
emissions (2018)
0,002%

NDC: Mitigation Summary

(NDC from 2016)

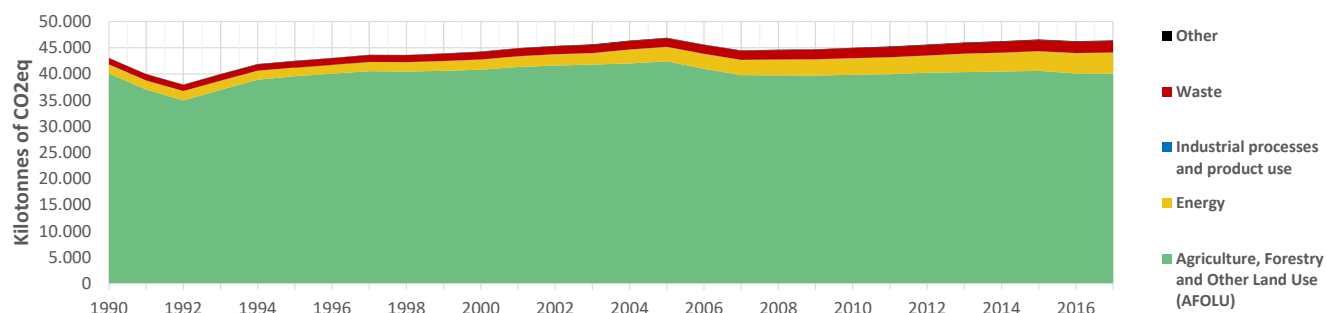
Somalia communicated nine "ready for implementation and planned adaptation and mitigation INDCs projects" including forestry, energy, transport, waste, and agriculture.

INTPA "NDC Group"

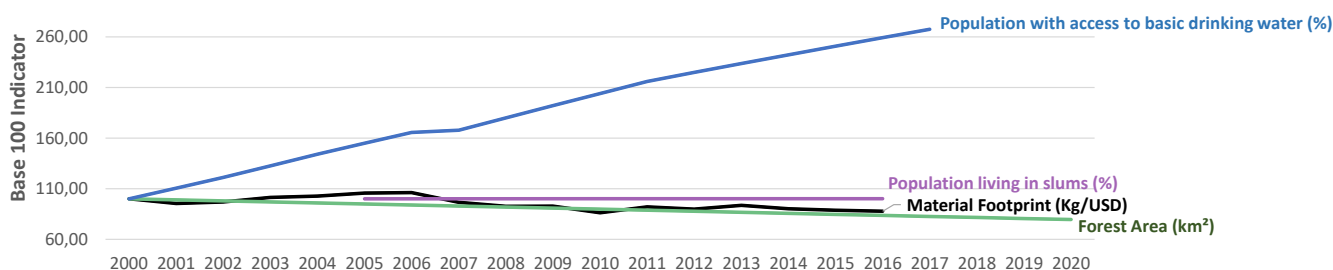
Group 3 - Suggested focus on adaptation for EU cooperation

Pillar	Indicator Name and Unit	Value	Interpretation
Green, circular and low-carbon economy	Ecological footprint (Consumption in global hectares per capita, 2017)	0,95 gh/cap	Within the global sustainable threshold of 1,6 gha per capita
	Recycling and composting rate (% of total solid waste, 2017)	NA	No Data
	Water productivity (USD of GDP per m ³ of water extracted, 2013)	0,17 \$/m ³	Highly inefficient use of water resources
	Material footprint (Kg of raw materials used per USD of GDP, 2010)	28,56 kg/\$	Highly resource-inefficient production and consumption practices
	Sustainable Consumption and Production Policy Framework (2017)	D	No policy framework for SCP has been reported to the UN
	Change in emissions (production) vs change in GDP (2007-2017)	+5% / NA	No Data
Biodiversity & Forests	Terrestrial protected areas (% of total land area, 2020)	0,01%	Significant efforts are needed to meet CBD Target of 17% by 2020
	Threatened species (% of total evaluated species, 2019)	6,24%	Medium share of threatened species, risk missing SDG target 15.5
	Population around protected areas (% total pop., 10km buffer, 2015)	0,25%	Small proportion of the population living around protected areas
	Forest area change (% change between 2015 and 2020)	-6,03 %	SDG Target 15.2 not achieved (halt deforestation by 2020)
	Sustainable forest management (% area with long-term plan, 2020)	NA	No Data
	Employment in forestry (number of full-time equivalents, 2015)	22090 FTE	Medium share of employment (0,5%-1% of total labor force, 2015)
Green and Smart Cities	Proportion of urban population living in slums (% in 2016)	73,60%	Significant efforts needed for SDG Target 11.1 (upgrade by 2030)
	Satisfaction with public transport (% satisfied, 2018)	61,99%	Medium satisfaction (UN SDSN interpretation)
	Solid waste uncollected or dumped in the open (% of total, 2017)	NA	No Data
	Wastewater receiving primary treatment (% of total)	NA	No Data
	Urban air pollution (µg/m ³ of PM 2.5 particles, 2016)	27,98 µg/m ³	Above EU 2020 target (18µg/m ³) but below US Standard (35µg/m ³)
	Alignment of national DRR strategies to Sendai Framework (0-1, 2018)	0,75	Substantial alignment with the Sendai Framework (1)
Sustainable Energy	Access to electricity (% of population, 2018)	35,26%	Significant efforts needed to meet SDG Target 7.1 of 100% by 2030
	Renewable energy (% of total energy consumption, 2016)	94,67%	High share of renewables in total energy consumption
	Renewable electricity (% of electricity production, 2015)	0,00%	Very low share of renewables, low contribution to SDG Target 7.2
	Access to clean cooking (% of total population with access, 2018)	5,80%	Significant efforts needed for universal access to clean cooking
	Fossil fuel subsidies (% of GDP, 2015)	NA	No Data
	Energy Intensity (megajoules per constant 2011 PPP GDP, 2017)	NA	No Data
Food systems: from Farms to Forks	Rural poverty (% of rural population below 1\$90 a day, 2018)	NA	No Data
	Food security (% of population in food crisis or worse, 2019)	17,00%	Progress is still needed to meet SDG Target 2.1 of 0% by 2030
	Nutrition (% of children under 5 who are stunted, 2019)	NA	No Data
	Fertilizer consumption (kg per hectare, 2016)	NA	No Data
	Land degradation (national area with declining productivity 1999-2013)	10,52%	Significant efforts needed to meet SDG Target 15.3 of 0% by 2030
	Agriculture and FOLU share of emissions (% of CO ₂ eq in 2017)	86,34%	High share of emissions - Key sector for climate mitigation
Water & Oceans	Population using at least basic drinking water (% of pop., 2017)	52,44%	Significant efforts needed to meet SDG Target 6.1 (100% by 2030)
	Population using at least basic sanitation services (% of pop., 2017)	38,30%	Significant efforts needed to meet SDG Target 6.2 (100% by 2030)
	Water scarcity (m ³ of renewable freshwater per capita, 2014)	444 m ³ /cap	Absolute water scarcity (less than 500m ³ per person per year)
	Water stress (water withdrawal as % of total available water, 2014)	30,34%	Medium water stress, but still within ecological requirements
	Marine protected areas (% of total marine area, 2020)	NA	No Data
	Fish stocks overexploited or collapsed (% of fish stocks, 2014)	15,41%	SDG Target 14.4 of 0% by 2020 not met, progress still needed

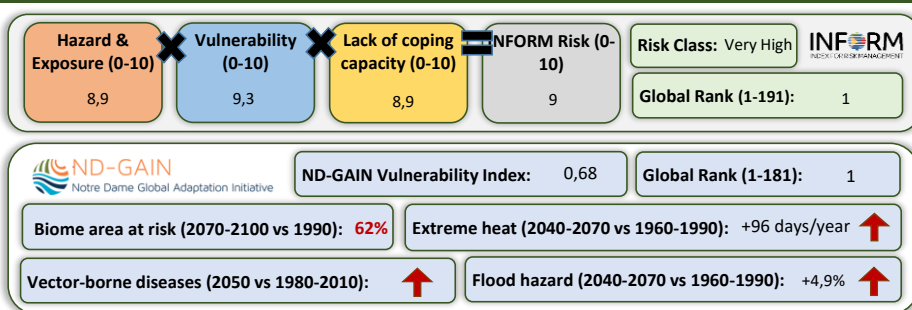
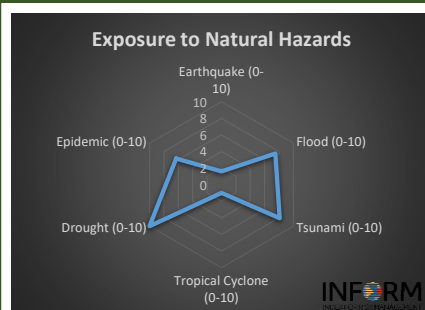
Greenhouse Gas Emission History (Production-based)



Historic Trends of selected indicators per Green Deal Pillar (Base 100)



Climate Adaptation Needs



2020 EPI Country Rank (out of 180)

NA

2020 EPI Score [0=worst, 100=best]

NA

No evaluation at the
Environmental Performance Index

SDG Index 2020

(UN SDSN & Bertelsmann Stiftung)



Legend:

- SDG achieved
- Challenges remain
- Significant challenges remain
- Major challenges remain
- Information unavailable