



Green Deal Country Fiche

Pakistan

Population in 2019
216,57 million habitants

Projected population in 2050
338,01 million habitants

Surface
796,1 thousands km²

Population density (2019)
272 habitants per km²

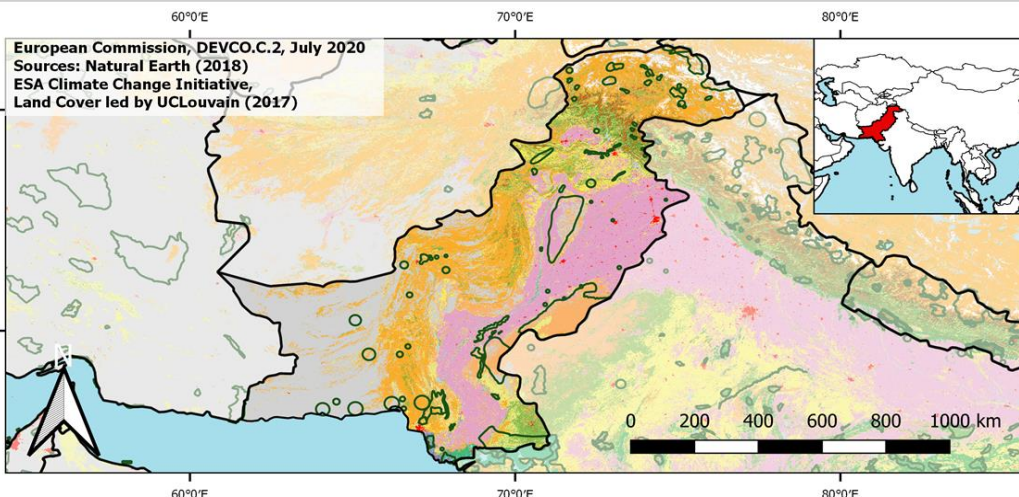
GDP per capita
1.284,70 US\$ (2019)

Population living below 1,90 \$/day
4,00 % in 2015

Human Development Index
0,56 (2019, UN target: >0,8)

Legend

- Main Protected Areas
- Land Cover Classes**
 - Cropland rainfed
 - Cropland irrigated
 - Mosaic crops/nat.veg
 - Tropical dense forest
 - Deciduous forest
 - Coniferous forest
 - Mixed forest
 - Shrubland
 - Grassland
 - Sparse vegetation
 - Swamp forest
 - Mangrove
 - Swamps
 - Urban areas
 - Bare areas
 - Water bodies
 - Permanent snow and ice



Share of global
emissions (2018)
0,611%

NDC: Mitigation Summary

(NDC from 2016)

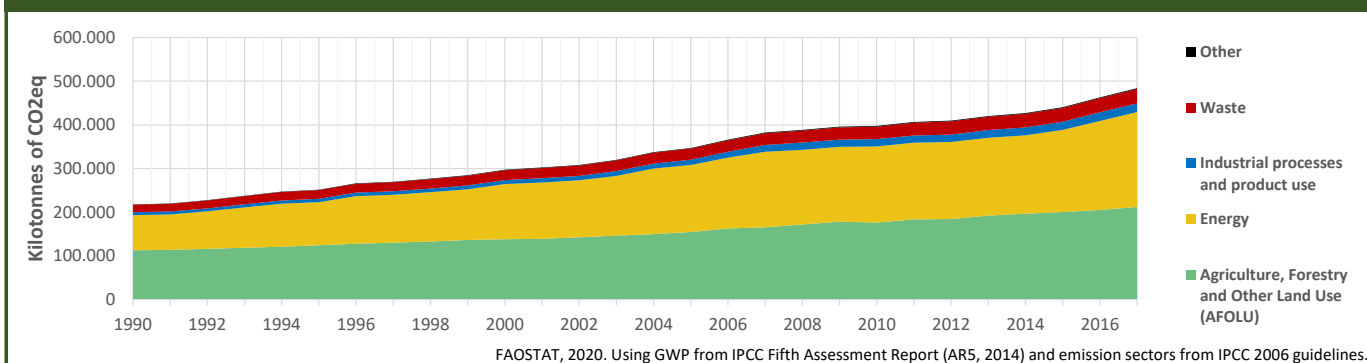
Pakistan conditionally commits to reduce its GHG emissions up to 20% by 2030 compared to business-as-usual, for an overall cost estimated at USD 40 billion. Actions focus on energy, industrial process, agriculture, land-use change, forestry and waste.

INTPA "NDC Group"

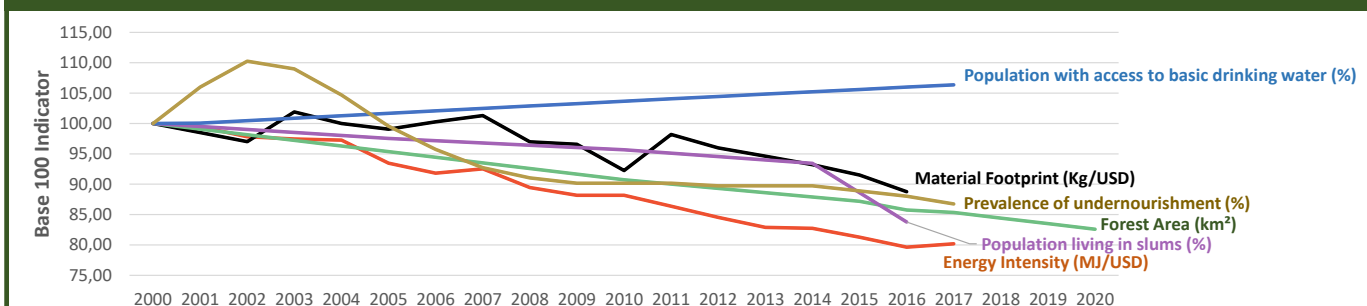
Group 2 - Suggested EU focus on both Mitigation and Adaptation

Pillar	Indicator Name and Unit	Value	Interpretation
Green, circular and low-carbon economy	Ecological footprint (Consumption in global hectares per capita, 2017)	0,86 gh/cap	Within the global sustainable threshold of 1,6 gha per capita
	Recycling and composting rate (% of total solid waste, 2017)	7%	Low recycling and composting rate (overall EU-27 value = 45%)
	Water productivity (USD of GDP per m ³ of water extracted, 2017)	1,46 \$/m ³	Highly inefficient use of water resources
	Material footprint (Kg of raw materials used per USD of GDP, 2010)	2,72 kg/\$	Larger footprint than all EU-27 Member States
	Sustainable Consumption and Production Policy Framework (2017)	C2	No SCP policy instrument or coordination mechanism reported
	Change in emissions (production) vs change in GDP (2007-2017)	+25% / +100%	Relative decoupling: emissions increased, but slower than GDP
Biodiversity & Forests	Terrestrial protected areas (% of total land area, 2020)	10,79%	Significant efforts are needed to meet CBD Target of 17% by 2020
	Threatened species (% of total evaluated species, 2019)	6,34%	Medium share of threatened species, risk missing SDG target 15.5
	Population around protected areas (% total pop., 10km buffer, 2015)	16,91%	Important share of population - consider landscape approach
	Forest area change (% change between 2015 and 2020)	-5,26 %	SDG Target 15.2 not achieved (halt deforestation by 2020)
	Sustainable forest management (% area with long-term plan, 2020)	NA	No Data
	Employment in forestry (number of full-time equivalents, 2015)	17830 FTE	Low share of total employment (<0,5% of total labor force in 2015)
Green and Smart Cities	Proportion of urban population living in slums (% in 2016)	40,80%	Further efforts needed for SDG Target 11.1 (upgrade by 2030)
	Satisfaction with public transport (% satisfied, 2018)	60,18%	Medium satisfaction (UN SDSN interpretation)
	Solid waste uncollected or dumped in the open (% of total, 2017)	63%	Significant efforts are needed to meet SDG Target 11.6
	Wastewater receiving primary treatment (% of total)	1,00%	Significant efforts needed to ensure at least full primary treatment
	Urban air pollution (µg/m ³ of PM 2.5 particles, 2016)	56,18 µg/m ³	Very high air pollution, above key guideline values (WHO, EU, US)
	Alignment of national DRR strategies to Sendai Framework (0-1, 2018)	0,43	Limited alignment with the Sendai Framework (0 to <0,5)
Sustainable Energy	Access to electricity (% of population, 2018)	71,09%	Further efforts still needed to meet SDG Target 7.1 of 100% by 2030
	Renewable energy (% of total energy consumption, 2016)	45,56%	Higher share of renewables than the EU 2020 target of 20%
	Renewable electricity (% of electricity production, 2015)	31,43%	Medium share of renewable electricity
	Access to clean cooking (% of total population with access, 2018)	46,30%	Significant efforts needed for universal access to clean cooking
	Fossil fuel subsidies (% of GDP, 2015)	0,00%	No fossil-fuel subsidies, SDG Target 12.C achieved
	Energy Intensity (megajoules per constant 2011 PPP GDP, 2017)	4,41 MJ/\$	Energy Intensity above EU average, but still within range of EU MS
Food systems: from Farms to Forks	Rural poverty (% of rural population below \$190 a day, 2015)	5,50%	Further efforts needed to achieve SDG Target 1.1 (0% by 2030)
	Food security (% of population in food crisis or worse, 2019)	NA	No Data
	Nutrition (% of children under 5 who are stunted, 2018)	37,60%	Significant efforts needed to meet SDG Target 2.2 of 0% by 2030
	Fertilizer consumption (kg per hectare, 2016)	144,33 kg/ha	Within range of EU MS values (below EU overall use of 153 kg/ha)
	Land degradation (national area with declining productivity 1999-2013)	3,47%	Progress is still needed to meet SDG Target 15.3 of 0% by 2030
	Agriculture and FOLU share of emissions (% of CO ₂ eq in 2017)	43,82%	High share of emissions - Key sector for climate mitigation
Water & Oceans	Population using at least basic drinking water (% of pop., 2017)	91,47%	Further progress needed to meet SDG Target 6.1 (100% by 2030)
	Population using at least basic sanitation services (% of pop., 2017)	59,90%	Significant efforts needed to meet SDG Target 6.2 (100% by 2030)
	Water scarcity (m ³ of renewable freshwater per capita, 2014)	296 m ³ /cap	Absolute water scarcity (less than 500m ³ per person per year)
	Water stress (water withdrawal as % of total available water, 2014)	102,50%	High water stress. Minimum environmental flow compromised.
	Marine protected areas (% of total marine area, 2020)	0,77%	Significant efforts needed to achieve CBD Target of 10% by 2020
	Fish stocks overexploited or collapsed (% of fish stocks, 2014)	40,25%	SDG Target 14.4 (0% by 2020) not met, significant efforts needed

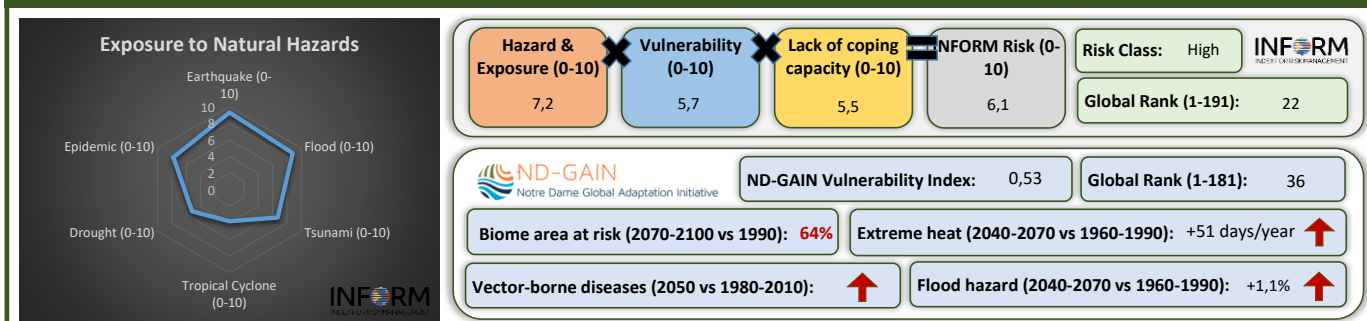
Greenhouse Gas Emission History (Production-based)



Historic Trends of selected indicators per Green Deal Pillar (Base 100)



Climate Adaptation Needs



Environmental Performance Index 2020

2020 EPI Country Rank (out of 180)

142

2020 EPI Score [0=worst, 100=best]

33,1



SDG Index 2020

(UN SDSN & Bertelsmann Stiftung)



Legend:

- SDG achieved
- Challenges remain
- Significant challenges remain
- Major challenges remain
- Information unavailable