

## Green Deal Country Fiche

### Nepal

Population in 2019  
28,61 million habitants

Projected population in 2050  
35,32 million habitants

Surface  
147,2 thousands km<sup>2</sup>

Population density (2019)  
194 habitants per km<sup>2</sup>

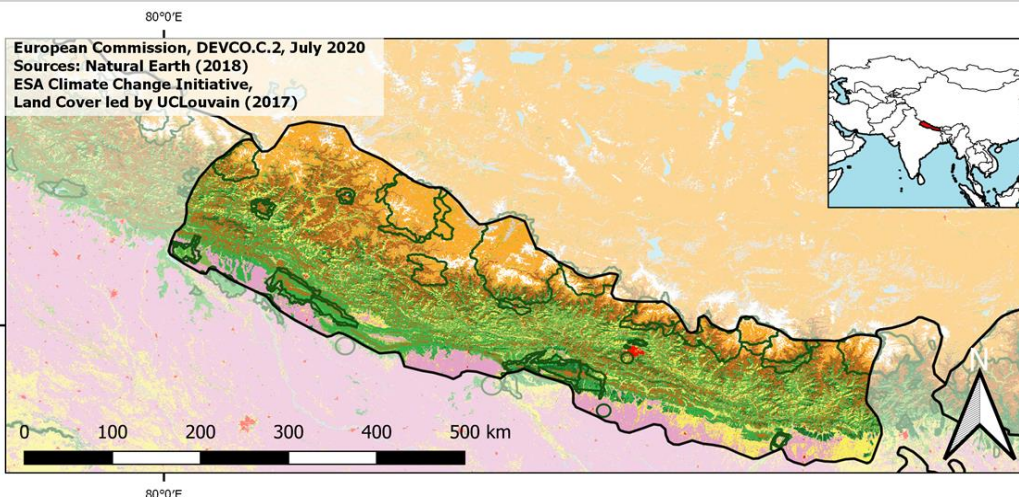
GDP per capita  
1.071,05 US\$ (2019)

Population living below 1,90 \$/day  
15,00 % in 2010

Human Development Index  
0,60 (2019, UN target: >0,8)

#### Legend

- Main Protected Areas
- Land Cover Classes**
- Cropland rainfed
- Cropland irrigated
- Mosaic crops/nat.veg
- Tropical dense forest
- Deciduous forest
- Coniferous forest
- Mixed forest
- Shrubland
- Grassland
- Sparse vegetation
- Swamp forest
- Mangrove
- Swamps
- Urban areas
- Bare areas
- Water bodies
- Permanent snow and ice



Share of global  
emissions (2018)  
0,026%

#### NDC: Mitigation Summary

(NDC from 2020)

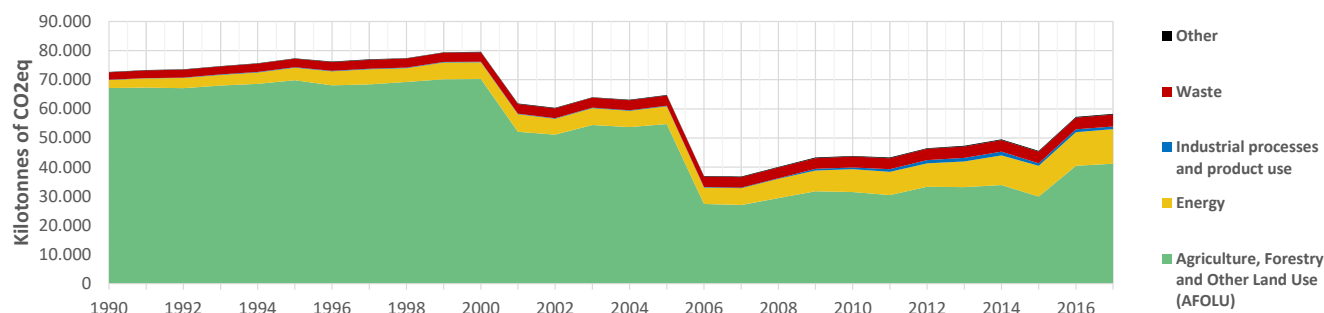
Nepal commits targets and measures in the sectors of energy, forestry and land use, industry, agriculture and waste.

#### INTPA "NDC Group"

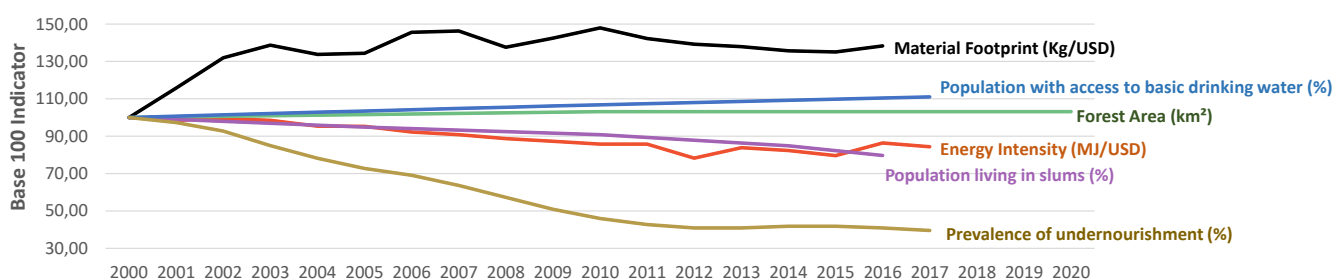
Group 3 - Suggested focus on  
adaptation for EU cooperation

Pillar	Indicator Name and Unit	Value	Interpretation
Green, circular and low-carbon economy	Ecological footprint (Consumption in global hectares per capita, 2017)	1,09 gh/cap	Within the global sustainable threshold of 1,6 gha per capita
	Recycling and composting rate (% of total solid waste, 2017)	NA	No Data
	Water productivity (USD of GDP per m <sup>3</sup> of water extracted, 2017)	2,13 \$/m <sup>3</sup>	Highly inefficient use of water resources
	Material footprint (Kg of raw materials used per USD of GDP, 2010)	3,81 kg/\$	Highly resource-inefficient production and consumption practices
	Sustainable Consumption and Production Policy Framework (2017)	D	No policy framework for SCP has been reported to the UN
	Change in emissions (production) vs change in GDP (2007-2017)	+48% / +144%	Relative decoupling: emissions increased, but slower than GDP
Biodiversity & Forests	Terrestrial protected areas (% of total land area, 2020)	23,42%	CBD Target has been met for terrestrial ecosystems (17% by 2020)
	Threatened species (% of total evaluated species, 2019)	13,57%	High share of threatened species, risk missing SDG target 15.5
	Population around protected areas (% total pop., 10km buffer, 2015)	30,75%	Important share of population - consider landscape approach
	Forest area change (% change between 2015 and 2020)	0 %	Forest cover at equilibrium, SDG Target 15.2 achieved
	Sustainable forest management (% area with long-term plan, 2020)	24,23%	Significant efforts needed to meet SDG Target 15.2 (100% by 2020)
	Employment in forestry (number of full-time equivalents, 2015)	NA	No Data
Green and Smart Cities	Proportion of urban population living in slums (% in 2016)	51,00%	Significant efforts needed for SDG Target 11.1 (upgrade by 2030)
	Satisfaction with public transport (% satisfied, 2018)	69,50%	Medium satisfaction (UN SDSN interpretation)
	Solid waste uncollected or dumped in the open (% of total, 2017)	NA	No Data
	Wastewater receiving primary treatment (% of total)	0,00%	Significant efforts needed to ensure at least full primary treatment
	Urban air pollution (µg/m <sup>3</sup> of PM 2.5 particles, 2016)	99,46 µg/m <sup>3</sup>	Very high air pollution, above key guideline values (WHO, EU, US)
	Alignment of national DRR strategies to Sendai Framework (0-1, 2019)	0,75	Substantial alignment with the Sendai Framework (1)
Sustainable Energy	Access to electricity (% of population, 2018)	93,92%	Some efforts still needed to meet SDG Target 7.1 of 100% by 2030
	Renewable energy (% of total energy consumption, 2016)	79,20%	High share of renewables in total energy consumption
	Renewable electricity (% of electricity production, 2015)	100,00%	High share of renewable electricity
	Access to clean cooking (% of total population with access, 2018)	29,60%	Significant efforts needed for universal access to clean cooking
	Fossil fuel subsidies (% of GDP, 2015)	0,00%	No fossil-fuel subsidies, SDG Target 12.C achieved
	Energy Intensity (megajoules per constant 2011 PPP GDP, 2017)	7,84 MJ/\$	Energy Intensity is above all EU-27 MS values
Food systems: from Farms to Forks	Rural poverty (% of rural population below \$190 a day, 2010)	16,40%	Further efforts needed to achieve SDG Target 1.1 (0% by 2030)
	Food security (% of pop in moderate or severe insecurity, 2016-2018)	31,60%	Significant efforts needed to meet SDG Target 2.1 of 0% by 2030
	Nutrition (% of children under 5 who are stunted, 2016)	36,00%	Significant efforts needed to meet SDG Target 2.2 of 0% by 2030
	Fertilizer consumption (kg per hectare, 2016)	74,08 kg/ha	Within range of EU MS values (below EU overall use of 153 kg/ha)
	Land degradation (national area with declining productivity 1999-2013)	14,83%	Significant efforts needed to meet SDG Target 15.3 of 0% by 2030
	Agriculture and FOLU share of emissions (% of CO <sub>2</sub> eq in 2017)	70,55%	High share of emissions - Key sector for climate mitigation
Water & Oceans	Population using at least basic drinking water (% of pop., 2017)	88,81%	Further progress needed to meet SDG Target 6.1 (100% by 2030)
	Population using at least basic sanitation services (% of pop., 2017)	62,10%	Further progress needed to meet SDG Target 6.2 (100% by 2030)
	Water scarcity (m <sup>3</sup> of renewable freshwater per capita, 2014)	6998 m <sup>3</sup> /cap	Water shortages should be only irregular/local (>1700m <sup>3</sup> /capita)
	Water stress (water withdrawal as % of total available water, 2014)	5,86%	Low water stress (less than 25% of resource extraction)
	Marine protected areas (% of total marine area, 2020)	Landlocked	Indicator not relevant because the country is landlocked
	Fish stocks overexploited or collapsed (% of fish stocks, 2014)	Landlocked	Indicator not relevant because the country is landlocked

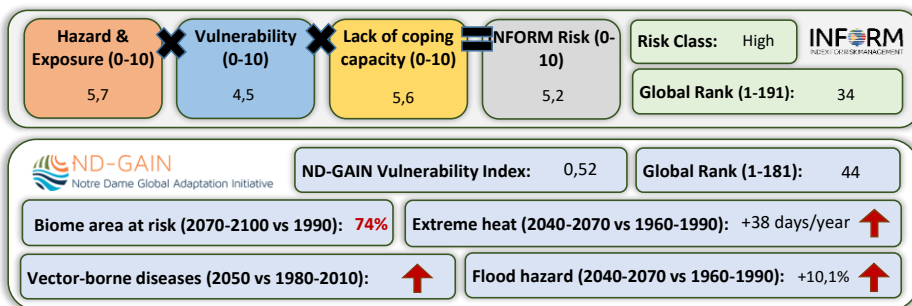
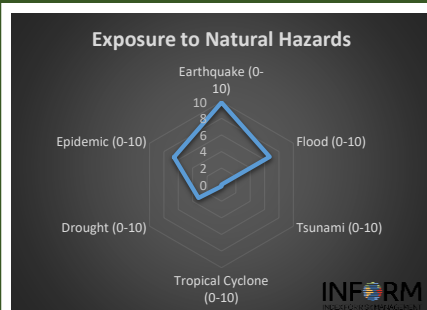
## Greenhouse Gas Emission History (Production-based)



## Historic Trends of selected indicators per Green Deal Pillar (Base 100)



## Climate Adaptation Needs



## Environmental Performance Index 2020

2020 EPI Country Rank (out of 180)

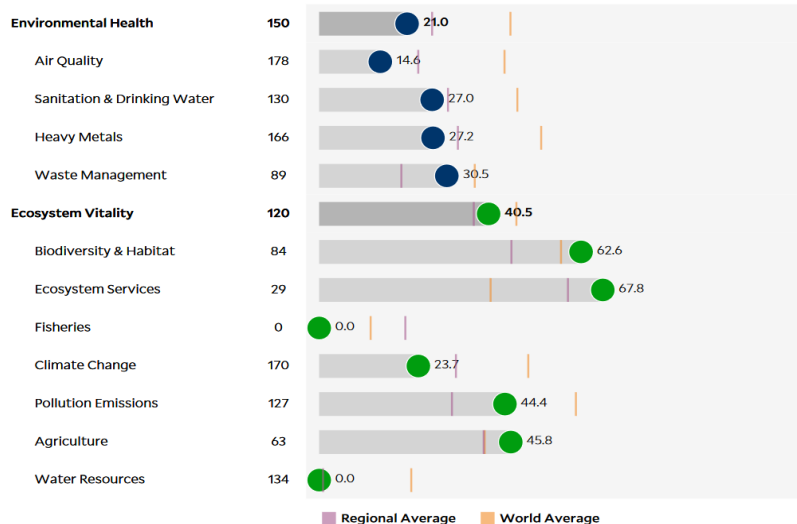
145

2020 EPI Score [0=worst, 100=best]

32,7

### Issue Categories

Rank [/180]



## SDG Index 2020

(UN SDSN & Bertelsmann Stiftung)



### Legend:

- SDG achieved
- Challenges remain
- Significant challenges remain
- Major challenges remain
- Information unavailable