



## Green Deal Country Fiche

### Cabo Verde

**Population in 2019**  
0,55 million habitants

**Projected population in 2050**  
0,68 million habitants

**Surface**  
4,0 thousands km²

**Population density (2019)**  
137 habitants per km²

**GDP per capita**  
3.603,78 US\$ (2019)

**Population living below 1,90 \$/day**  
3,40 % in 2015

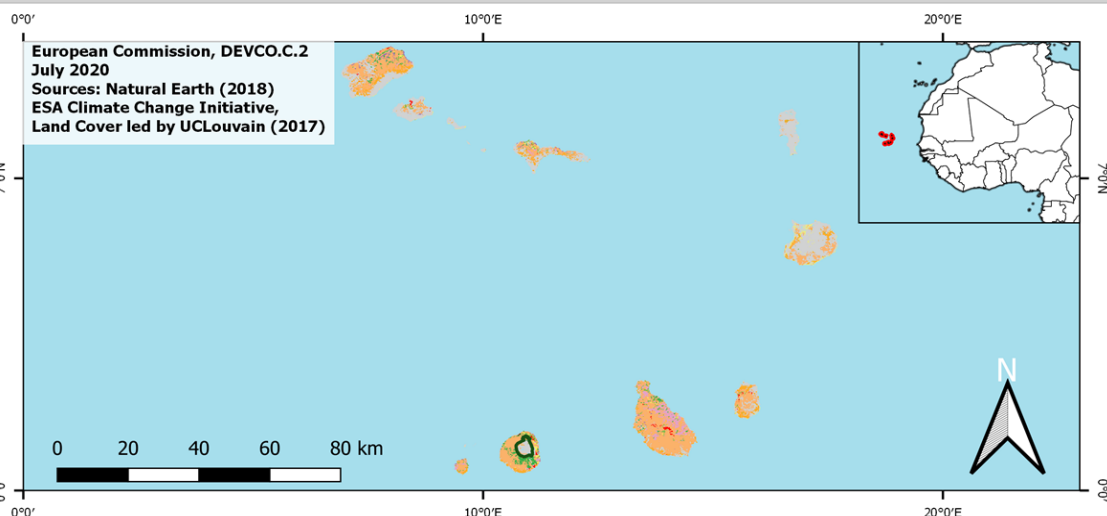
**Human Development Index**  
0,67 (2019, UN target: >0,8)

#### Legend

Main Protected Areas

#### Land Cover Classes

- Cropland rainfed
- Cropland irrigated
- Mosaic crops/nat.veg
- Tropical dense forest
- Deciduous forest
- Coniferous forest
- Mixed forest
- Shrubland
- Grassland
- Sparse vegetation
- Swamp forest
- Mangrove
- Swamps
- Urban areas
- Bare areas
- Water bodies
- Permanent snow and ice



**Share of global emissions (2018)**  
0,002%

#### NDC: Mitigation Summary

(NDC from 2017)

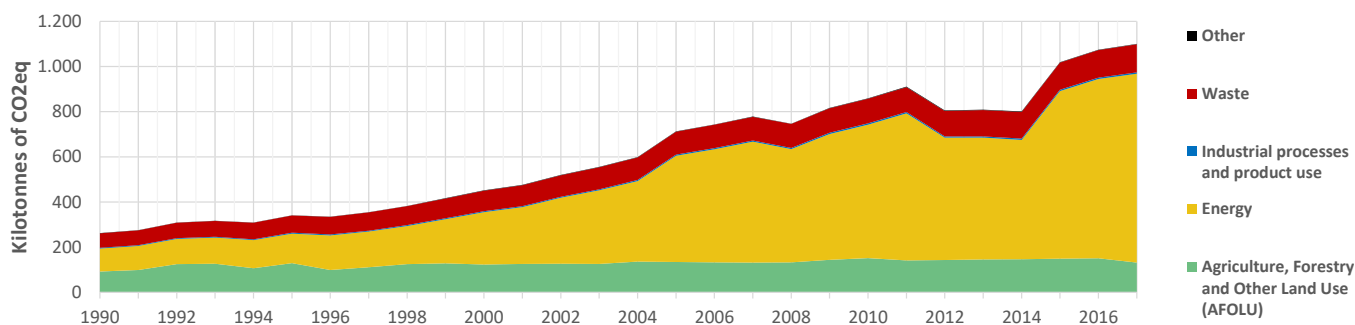
Cabo Verde intends to achieve 100% grid access by 2017 (unconditional), 100% renewable energy penetration rate by 2025 (including 30% unconditional) and reduction of overall energy demand by 20% in 2030 compared to BAU (including 10% unconditional).

#### INTPA "NDC Group"

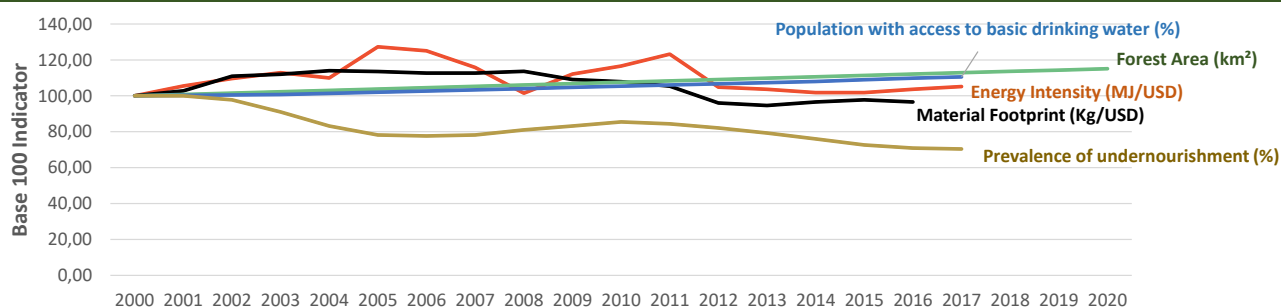
Group 3 - Suggested focus on adaptation for EU cooperation

Pillar	Indicator Name and Unit	Value	Interpretation
Green, circular and low-carbon economy	<b>Ecological footprint</b> (Consumption in global hectares per capita, 2017)	1,72 gh/cap	Above the global sustainable threshold of 1,6 gha per capita
	<b>Recycling and composting rate</b> (% of total solid waste, 2017)	NA	No Data
	<b>Water productivity</b> (USD of GDP per m³ of water extracted, 2013)	46,45 \$/m³	Less water efficient than EU average, but within range of EU MS
	<b>Material footprint</b> (Kg of raw materials used per USD of GDP, 2010)	2,36 kg/\$	Larger footprint than all EU-27 Member States
	<b>Sustainable Consumption and Production Policy Framework</b> (2017)	D	No policy framework for SCP has been reported to the UN
	<b>Change in emissions (production) vs change in GDP</b> (2007-2017)	+41% / +17%	Unsustainable growth path: emissions are growing faster than GDP
Biodiversity & Forests	<b>Terrestrial protected areas</b> (% of total land area, 2020)	2,89%	Significant efforts are needed to meet CBD Target of 17% by 2020
	<b>Threatened species</b> (% of total evaluated species, 2019)	9,55%	High share of threatened species, risk missing SDG target 15.5
	<b>Population around protected areas</b> (% total pop., 10km buffer, 2015)	25,60%	Important share of population - consider landscape approach
	<b>Forest area change</b> (% change between 2015 and 2020)	+3,39 %	Forest cover is increasing, SDG Target 15.2 achieved
	<b>Sustainable forest management</b> (% area with long-term plan, 2020)	NA	No Data
	<b>Employment in forestry</b> (number of full-time equivalents, 2015)	NA	No Data
Green and Smart Cities	<b>Proportion of urban population living in slums</b> (% in 2016)	NA	No Data
	<b>Satisfaction with public transport</b> (% satisfied, 2018)	NA	No Data
	<b>Solid waste uncollected or dumped in the open</b> (% of total, 2017)	NA	No Data
	<b>Wastewater receiving primary treatment</b> (% of total)	100,00%	All wastewater receives at least primary treatment
	<b>Urban air pollution</b> (µg/m³ of PM 2.5 particules, 2016)	31,65 µg/m³	Above EU 2020 target (18µg/m³) but below US Standard (35µg/m³)
	<b>Alignment of national DRR strategies to Sendai Framework</b> (0-1 Score)	NA	No Data
Sustainable Energy	<b>Access to electricity</b> (% of population, 2018)	93,59%	Some efforts still needed to meet SDG Target 7.1 of 100% by 2030
	<b>Renewable energy</b> (% of total energy consumption, 2016)	25,23%	Higher share of renewables than the EU 2020 target of 20%
	<b>Renewable electricity</b> (% of electricity production, 2015)	20,21%	Medium share of renewable electricity
	<b>Access to clean cooking</b> (% of total population with access, 2018)	82,90%	Further efforts still needed for universal access to clean cooking
	<b>Fossil fuel subsidies</b> (% of GDP, 2015)	2,21%	Among Top 20 countries with highest share of FF subsidies globally
	<b>Energy Intensity</b> (megajoules per constant 2011 PPP GDP, 2017)	2,85 MJ/\$	Energy Intensity within range of EU-MS, below the EU-27 average
Food systems: from Farms to Forks	<b>Rural poverty</b> (% of rural population below \$190 a day, 2015)	6,40%	Further efforts needed to achieve SDG Target 1.1 (0% by 2030)
	<b>Food security</b> (% of population in food crisis or worse, 2019)	2,00%	Progress is still needed to meet SDG Target 2.1 of 0% by 2030
	<b>Nutrition</b> (% of children under 5 who are stunted, 2019)	NA	No Data
	<b>Fertilizer consumption</b> (kg per hectare, 2016)	NA	No Data
	<b>Land degradation</b> (national area with declining productivity 1999-2013)	0,03%	Progress is still needed to meet SDG Target 15.3 of 0% by 2030
	<b>Agriculture and FOLU share of emissions</b> (% of CO2eq in 2017)	12,00%	Medium share of emissions - Relevant for climate mitigation
Water & Oceans	<b>Population using at least basic drinking water</b> (% of pop., 2017)	87,08%	Further progress needed to meet SDG Target 6.1 (100% by 2030)
	<b>Population using at least basic sanitation services</b> (% of pop., 2017)	73,90%	Further progress needed to meet SDG Target 6.2 (100% by 2030)
	<b>Water scarcity</b> (m³ of renewable freshwater per capita, 2014)	570 m³/cap	Water scarcity (less than 1000m³ per person per year)
	<b>Water stress</b> (water withdrawal as % of total available water, 2014)	8,97%	Low water stress (less than 25% of resource extraction)
	<b>Marine protected areas</b> (% of total marine area, 2020)	0,00%	Significant efforts needed to achieve CBD Target of 10% by 2020
	<b>Fish stocks overexploited or collapsed</b> (% of fish stocks, 2014)	24,43%	SDG Target 14.4 (0% by 2020) not met, significant efforts needed

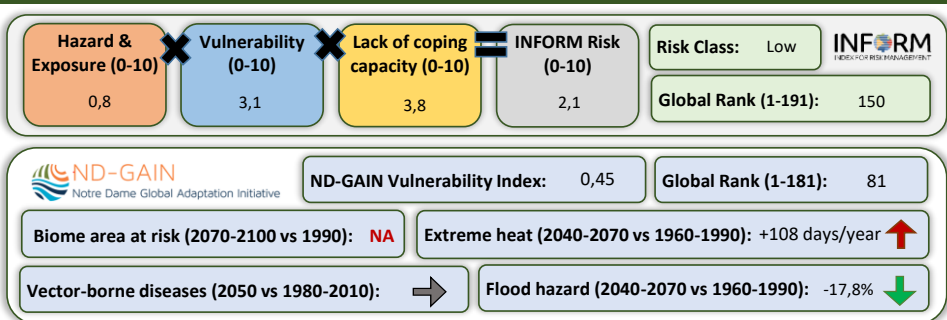
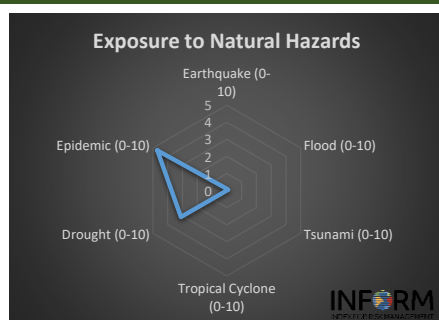
## Greenhouse Gas Emission History (Production-based)



## Historic Trends of selected indicators per Green Deal Pillar (Base 100)



## Climate Adaptation Needs



## Environmental Performance Index 2020

2020 EPI Country Rank (out of 180)

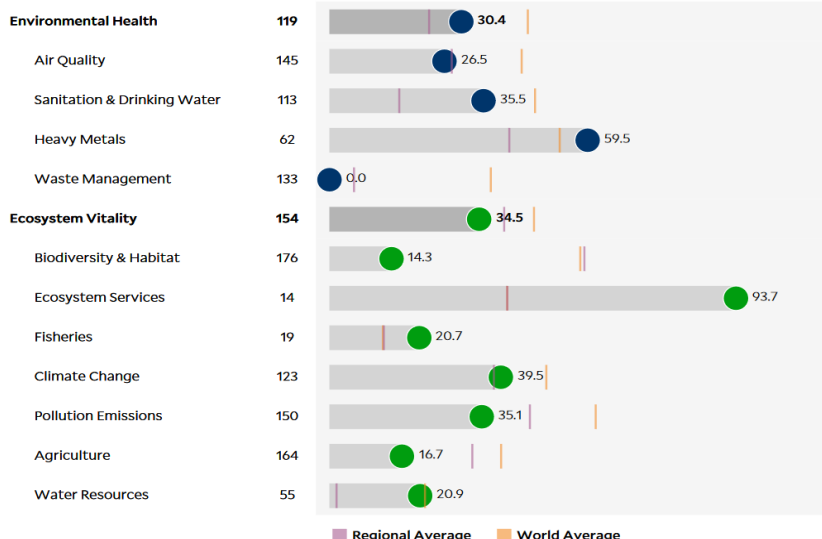
144

2020 EPI Score [0=worst, 100=best]

32,8

### Issue Categories

Rank [/180]



## SDG Index 2020

(UN SDSN & Bertelsmann Stiftung)



### Legend:

- SDG achieved
- Challenges remain
- Significant challenges remain
- Major challenges remain
- Information unavailable