



## Green Deal Country Fiche

### Burundi

**Population in 2019**  
11,53 million habitants

**Projected population in 2050**  
25,33 million habitants

**Surface**  
27,8 thousands km²

**Population density (2019)**  
415 habitants per km²

**GDP per capita**  
261,25 US\$ (2019)

**Population living below 1,90 \$/day**  
72,80 % in 2013

**Human Development Index**  
0,43 (2019, UN target: >0,8)

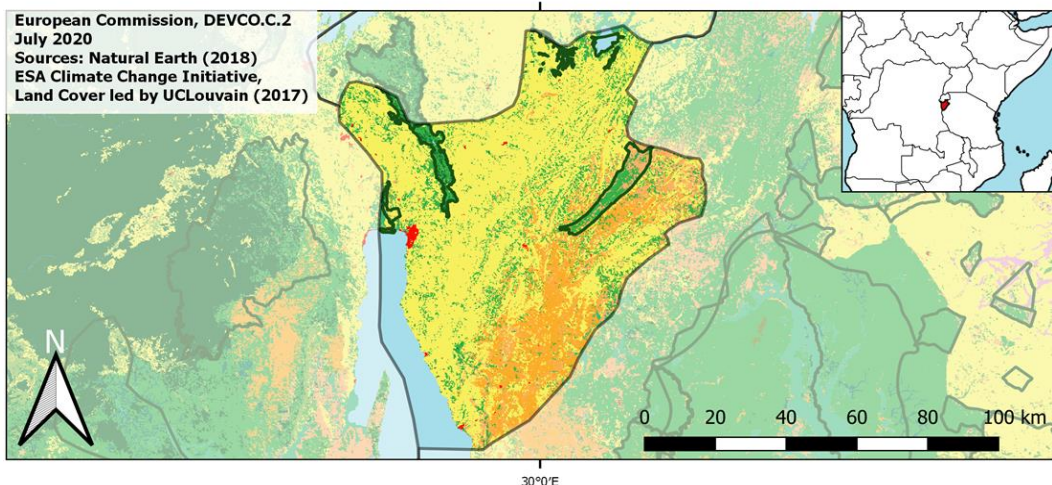
#### Legend

Main Protected Areas

#### Land Cover Classes

- Cropland rainfed
- Cropland irrigated
- Mosaic crops/nat.veg
- Tropical dense forest
- Deciduous forest
- Coniferous forest
- Mixed forest
- Shrubland
- Grassland
- Sparse vegetation
- Swamp forest
- Mangrove
- Swamps
- Urban areas
- Bare areas
- Water bodies
- Permanent snow and ice

European Commission, DEVCO.C.2  
July 2020  
Sources: Natural Earth (2018)  
ESA Climate Change Initiative,  
Land Cover led by UCLouvain (2017)



#### Share of global emissions (2018)

0,001%

#### NDC: Mitigation Summary

(NDC from 2018)

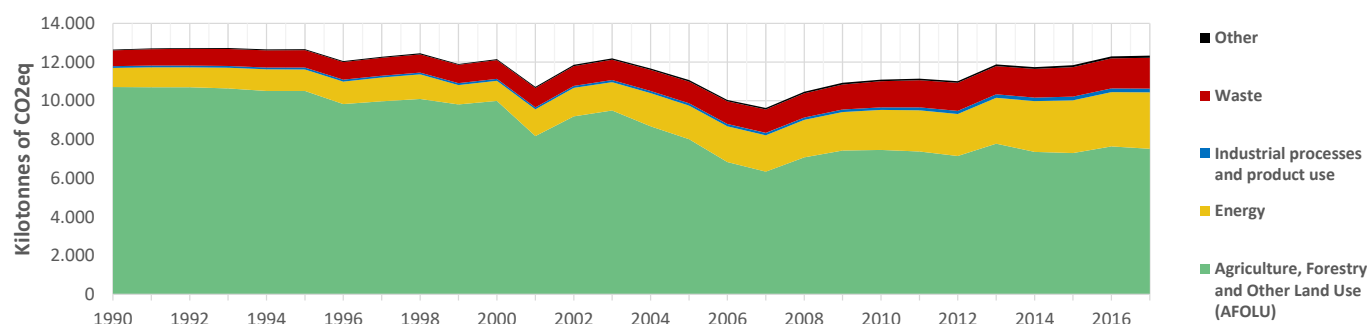
Burundi aims to reduce its GHG emissions by 20% in 2030 compared to BAU (including 3% unconditional). Actions will focus on Energy (fuel combustion activities), Agriculture & livestock (agricultural soils), Land use and forestry (forestland).

#### INTPA "NDC Group"

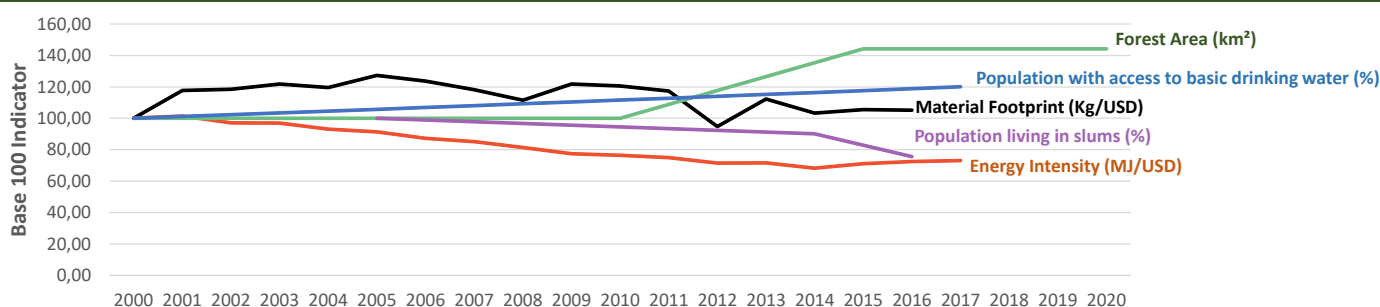
Group 3 - Suggested focus on adaptation for EU cooperation

Pillar	Indicator Name and Unit	Value	Interpretation
Green, circular and low-carbon economy	<b>Ecological footprint</b> (Consumption in global hectares per capita, 2017)	0,63 gh/cap	Within the global sustainable threshold of 1,6 gha per capita
	<b>Recycling and composting rate</b> (% of total solid waste, 2017)	NA	No Data
	<b>Water productivity</b> (USD of GDP per m³ of water extracted, 2014)	5,86 \$/m³	Low water productivity (minimum EU MS value : 10 \$/m³)
	<b>Material footprint</b> (Kg of raw materials used per USD of GDP, 2010)	6,93 kg/\$	Highly resource-inefficient production and consumption practices
	<b>Sustainable Consumption and Production Policy Framework</b> (2017)	D	No policy framework for SCP has been reported to the UN
	<b>Change in emissions (production) vs change in GDP</b> (2007-2017)	+23% / +134%	Relative decoupling: emissions increased, but slower than GDP
Biodiversity & Forests	<b>Terrestrial protected areas</b> (% of total land area, 2020)	7,48%	Significant efforts are needed to meet CBD Target of 17% by 2020
	<b>Threatened species</b> (% of total evaluated species, 2019)	9,89%	High share of threatened species, risk missing SDG target 15.5
	<b>Population around protected areas</b> (% total pop., 10km buffer, 2015)	34,82%	Important share of population - consider landscape approach
	<b>Forest area change</b> (% change between 2015 and 2020)	0 %	Forest cover at equilibrium, SDG Target 15.2 achieved
	<b>Sustainable forest management</b> (% area with long-term plan, 2020)	NA	No Data
	<b>Employment in forestry</b> (number of full-time equivalents, 2015)	720 FTE	Low share of total employment (<0,5% of total labor force in 2015)
Green and Smart Cities	<b>Proportion of urban population living in slums</b> (% in 2016)	48,60%	Further efforts needed for SDG Target 11.1 (upgrade by 2030)
	<b>Satisfaction with public transport</b> (% satisfied, 2018)	39,43%	Low satisfaction with public transport (UN SDSN interpretation)
	<b>Solid waste uncollected or dumped in the open</b> (% of total, 2017)	NA	No Data
	<b>Wastewater receiving primary treatment</b> (% of total)	0,00%	Significant efforts needed to ensure at least full primary treatment
	<b>Urban air pollution</b> (µg/m³ of PM 2.5 particules, 2016)	35,64 µg/m³	Very high air pollution, above key guideline values (WHO, EU, US)
	<b>Alignment of national DRR strategies to Sendai Framework</b> (0-1, 2018)	0,68	Moderate alignment with the Sendai Framework (0,5 to < 0,75)
Sustainable Energy	<b>Access to electricity</b> (% of population, 2018)	11,02%	Significant efforts needed to meet SDG Target 7.1 of 100% by 2030
	<b>Renewable energy</b> (% of total energy consumption, 2016)	89,22%	High share of renewables in total energy consumption
	<b>Renewable electricity</b> (% of electricity production, 2015)	82,71%	High share of renewable electricity
	<b>Access to clean cooking</b> (% of total population with access, 2018)	<5%	Significant efforts needed for universal access to clean cooking
	<b>Fossil fuel subsidies</b> (% of GDP, 2015)	0,00%	No fossil-fuel subsidies, SDG Target 12.C achieved
	<b>Energy Intensity</b> (megajoules per constant 2011 PPP GDP, 2017)	8,74 MJ/\$	Energy Intensity is above all EU-27 MS values
Food systems: from Farms to Forks	<b>Rural poverty</b> (% of rural population below 1\$90 a day, 2013)	76,40%	Significant efforts needed to achieve SDG Target 1.1 (0% by 2030)
	<b>Food security</b> (% of population in food crisis or worse, 2019)	2,00%	Progress is still needed to meet SDG Target 2.1 of 0% by 2030
	<b>Nutrition</b> (% of children under 5 who are stunted, 2019)	54,20%	Significant efforts needed to meet SDG Target 2.2 of 0% by 2030
	<b>Fertilizer consumption</b> (kg per hectare, 2016)	5,42 kg/ha	Below lowest EU MS value (60 kg/ha in Romania)
	<b>Land degradation</b> (national area with declining productivity 1999-2013)	19,28%	Significant efforts needed to meet SDG Target 15.3 of 0% by 2030
	<b>Agriculture and FOLU share of emissions</b> (% of CO2eq in 2017)	60,96%	High share of emissions - Key sector for climate mitigation
Water & Oceans	<b>Population using at least basic drinking water</b> (% of pop., 2017)	60,83%	Further progress needed to meet SDG Target 6.1 (100% by 2030)
	<b>Population using at least basic sanitation services</b> (% of pop., 2017)	45,80%	Significant efforts needed to meet SDG Target 6.2 (100% by 2030)
	<b>Water scarcity</b> (m³ of renewable freshwater per capita, 2014)	1017 m³/cap	Water shortages may appear regularly
	<b>Water stress</b> (water withdrawal as % of total available water, 2014)	3,09%	Low water stress (less than 25% of resource extraction)
	<b>Marine protected areas</b> (% of total marine area, 2020)	Landlocked	Indicator not relevant because the country is landlocked
	<b>Fish stocks overexploited or collapsed</b> (% of fish stocks, 2014)	Landlocked	Indicator not relevant because the country is landlocked

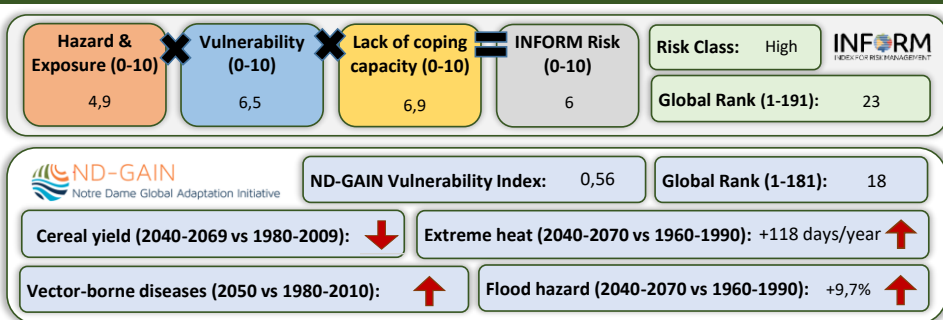
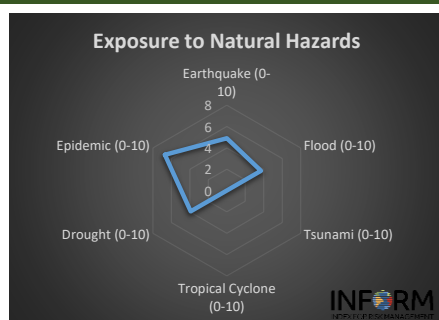
## Greenhouse Gas Emission History (Production-based)



## Historic Trends of selected indicators per Green Deal Pillar (Base 100)



## Climate Adaptation Needs



## Environmental Performance Index 2020

2020 EPI Country Rank (out of 180)

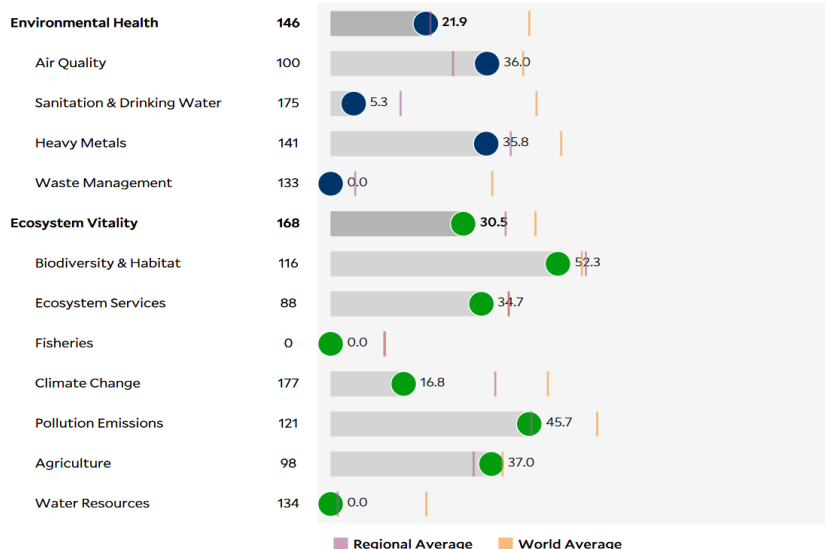
170

2020 EPI Score [0=worst, 100=best]

27,0

### Issue Categories

Rank [180]



## SDG Index 2020

(UN SDSN & Bertelsmann Stiftung)



### Legend:

- SDG achieved
- Challenges remain
- Significant challenges remain
- Major challenges remain
- Information unavailable