

THE SHARE BALE ECO-REGION PROJECT



DEVCO Environment Week 2018,
16 October 2018, Brussels

OUTLINE

1. The Bale Eco-region

- Main Characteristics
- Main Challenges

2. The SHARE Bale Eco-region Project

- Project Brief
- Methodology/ Approach
- Project Impacts
- Project Current Status
- Way Forward



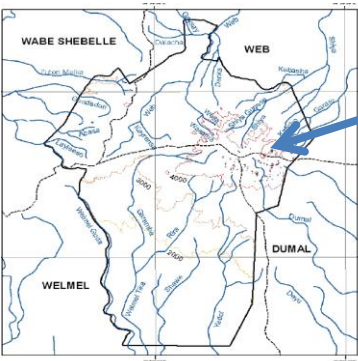
Main Eco-region Features

Bale Eco-Region

About 40 springs and stream

Highest Peak

2nd Peak





1. The highland system

- ≈2.0 M population
- Ecosystem service:
- Bread basket
- Water tower
- Biodiversity Hotspot (endemism)
- Huge carbon stock
- **But under huge pressure**

Ecological processes

Resource share (organism, energy, water, nutrient) =

Ecosystem Services

2. The lowland system

- ≈ 12 m people (=)
- Cross country (=)
- Partly dependent on upland system (resources and processes)
- Climate sensitive; resilience under question

Main Eco-region Challenges



Over grazing



Over cultivation and poor land management



Bush or Forest Fire

- Weak policy and Institution
- Weak institutional Coordination

Resettlement



Population pressure



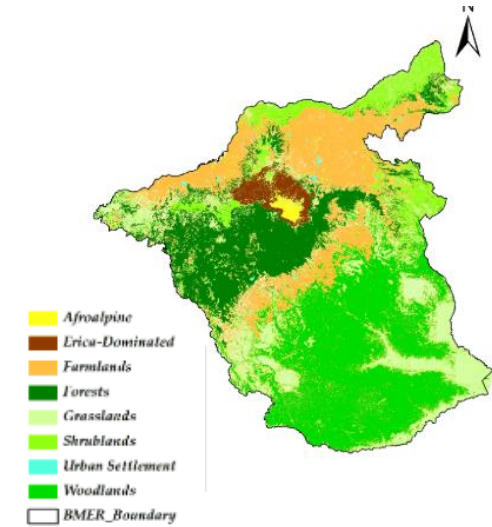
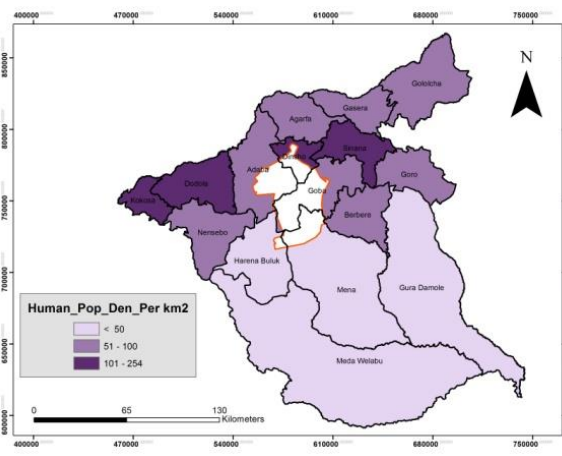
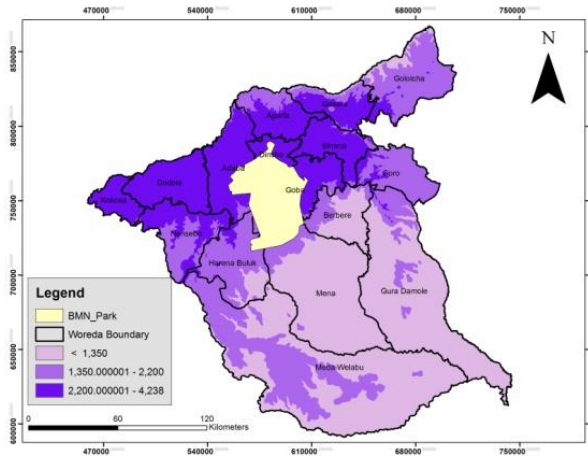
Project Brief

Objectives	<ul style="list-style-type: none">• Conserve Biodiversity and Ecosystems Functions• Improve Well-being of Highland and Lowland Communities within Bale Eco-Region
Implementing Partners	Consortium NGOs: FARM Africa (lead); FZS, IWMI, SoS Sahel Ethiopia and PHE Ethiopia
Project Fund	Total € 5.5 M (€ 5 M EU Contribution, € 0.5M Co-financing from Norway)
Duration	<ul style="list-style-type: none">• July 2014- August 2018• 2nd ongoing
RESULT Areas	Capacity-building; Knowledge Management, Natural Resource Management, Livelihood, Policy Advocacy
Beneficiaries	870,000 Direct Beneficiaries; and 2M Indirect Beneficiaries

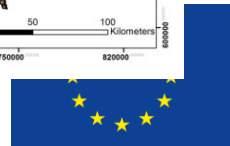
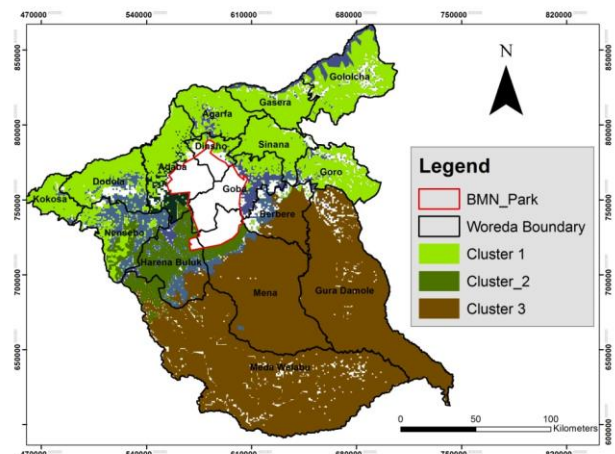
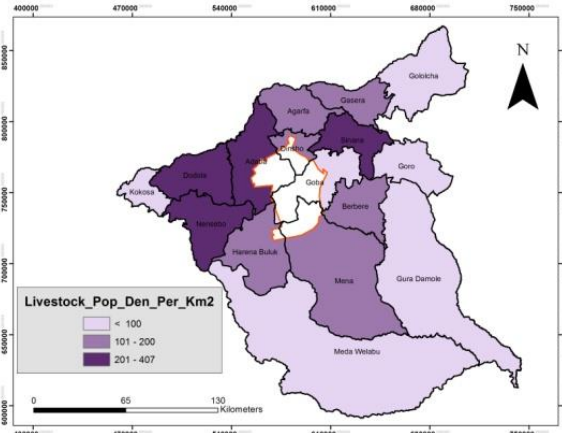
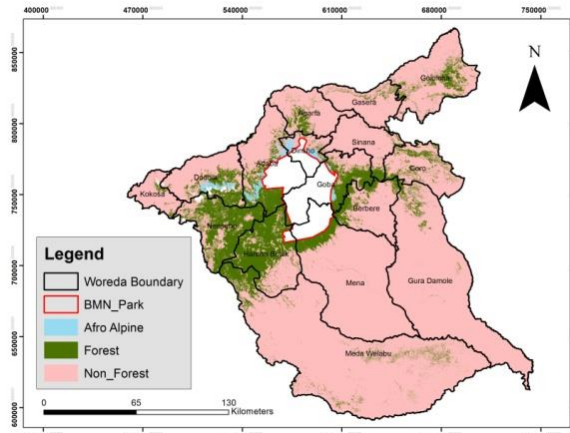


Methodology

Selection of Intervention Areas

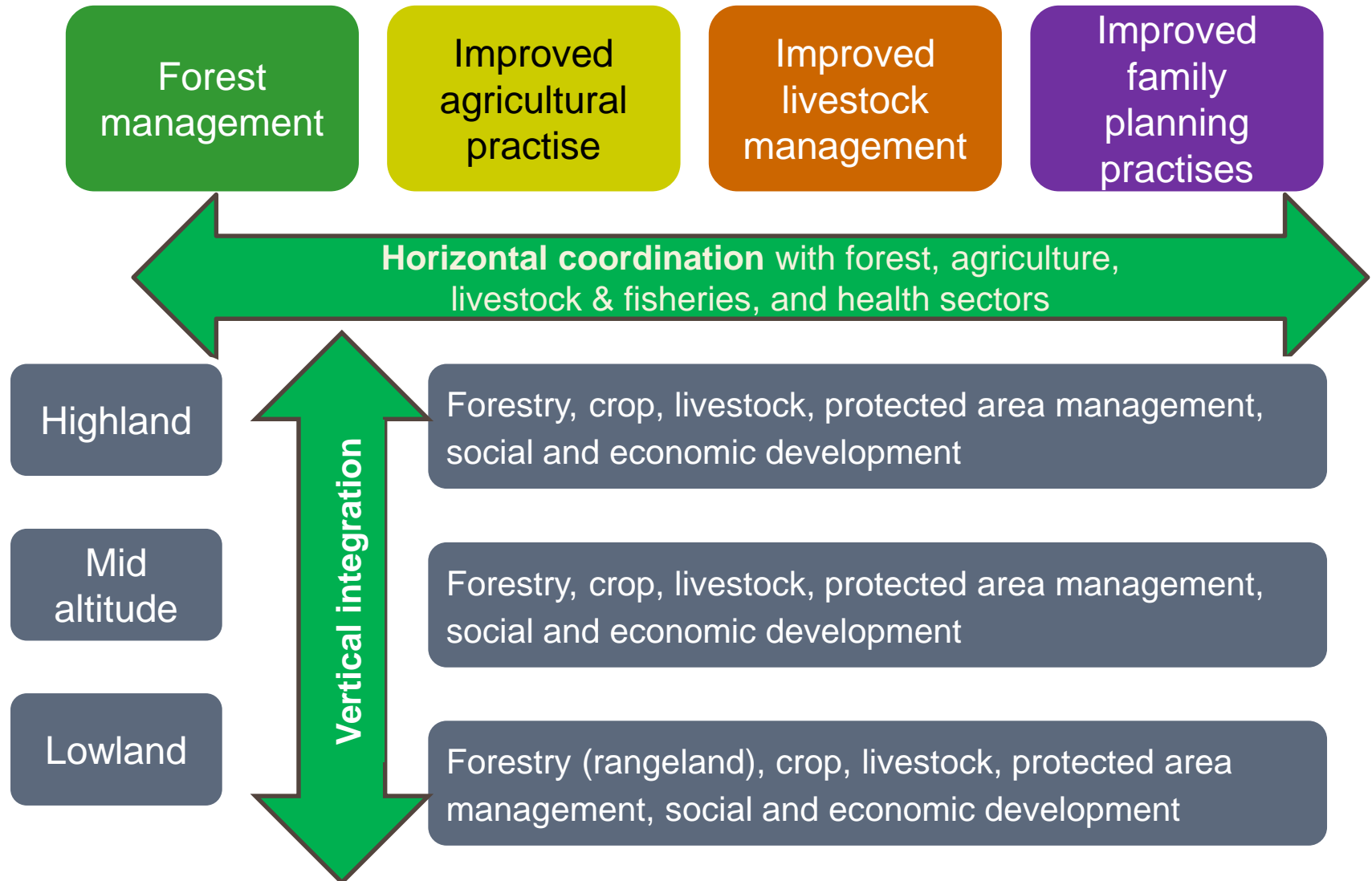


of Woredas (district) : 16 Total Area : 22000 km²
Intervention Woredas : 7



Methodology

Multi-thematic and Geographic- wide Integration



Some projects Impacts

On NRM

- **Forest (PFM):**
500,000ha Forest under PFM leading to reduced conversion rate from forest to grassland by 64%
- **Rangeland:**
350,000 ha put under PRM, leading to reduced conversion rate from grassland to farm by 77%;
- **Controlled hunting Areas (38528 ha land):**
Community benefit reached 60% through PFM - the first in Ethiopia

On Livelihoods

- **CSA and IGAs:**
Annual sample house holds' disposable income grew from ETB 7300 to ETB 10352 per annum;
- **Women Enhanced Economic Empowerment :**
milk processing group, goat husbandry, gum and essence group

Project Impacts...

On Capacity Building and governance

- **Knowledge, Attitude and Practice (KAP) score** for Government personnel on INRM/Eco-regional approach increased –
 - **K** from 75%-83%
 - **A** from 81 to 88%
 - **P** from 39 to 63%
- Community Resource monitoring Capacity score, measured via **Governance Effectiveness Tracking Tool (GEMTT)** increased from the baseline 52% to date average 72%.

On Research & Knowledge Management

- **17 research papers**, including MSc thesis focussing on key hydrology and socio economic issues were done,
- **Policy briefs** produced for some of them for policy advocacy;
- Observable **Reduced Sediment load** due to SWC, PFM;

Current Status of the Project

- **Project Operational Implementation period:**
ended 08/08/2018

- **Exit Strategy:**

Draft Eco-regional Development Plan prepared by FARM Africa Consortium and presented to DEVCO C2

- **Final Documents:**

Final reports, Audit report, and Final Eco-regional Development **Plan expected soon!**



Way Forward: Going into 2nd Phase

Rationale:

1. To scale out best practices and lessons learnt during phase 1;
2. Implementation of the Eco-regional Development Plan;
3. Support the development of a road map for the implementation of BMNP GMP;

Progress to date:

1. EUD submitted CN approved by the Gov2.
2. QRG approved the Global AD in June 2018;
3. Financing Decision to be in Nov 2018?





**Thank you for your
Attention and Support!**