



WWF

CERRADO
PANTANAL

2018

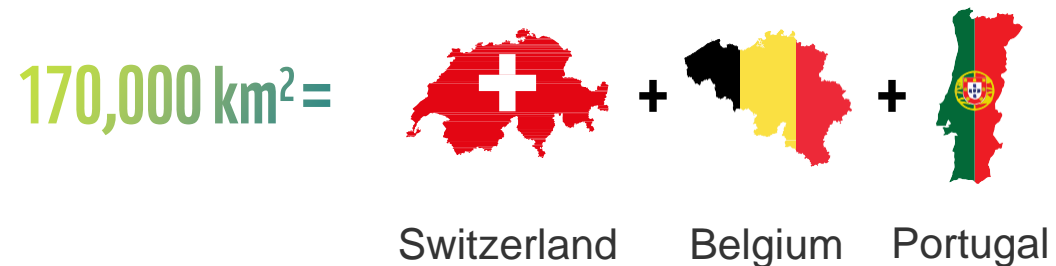
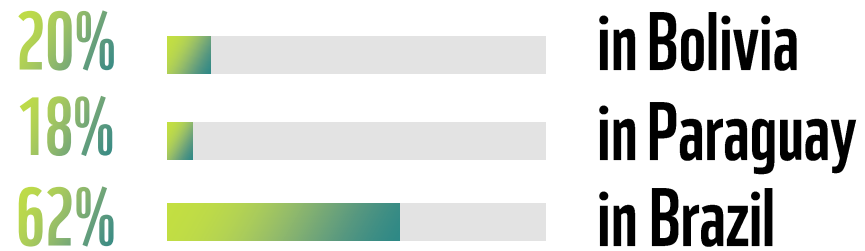
IN
PARTNERSHIP
WITH



PANTANAL

82% of the Pantanal is covered by natural land cover
IS THIS ENOUGH?

THE PLANET LARGEST WETLAND



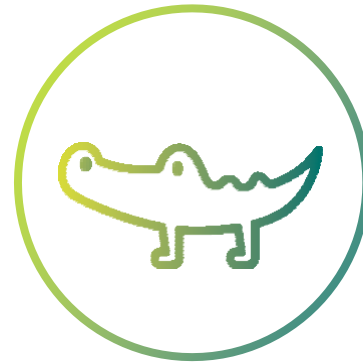
ESSENTIAL FOR...



WATER SUPPLY



CLIMATE REGULATION

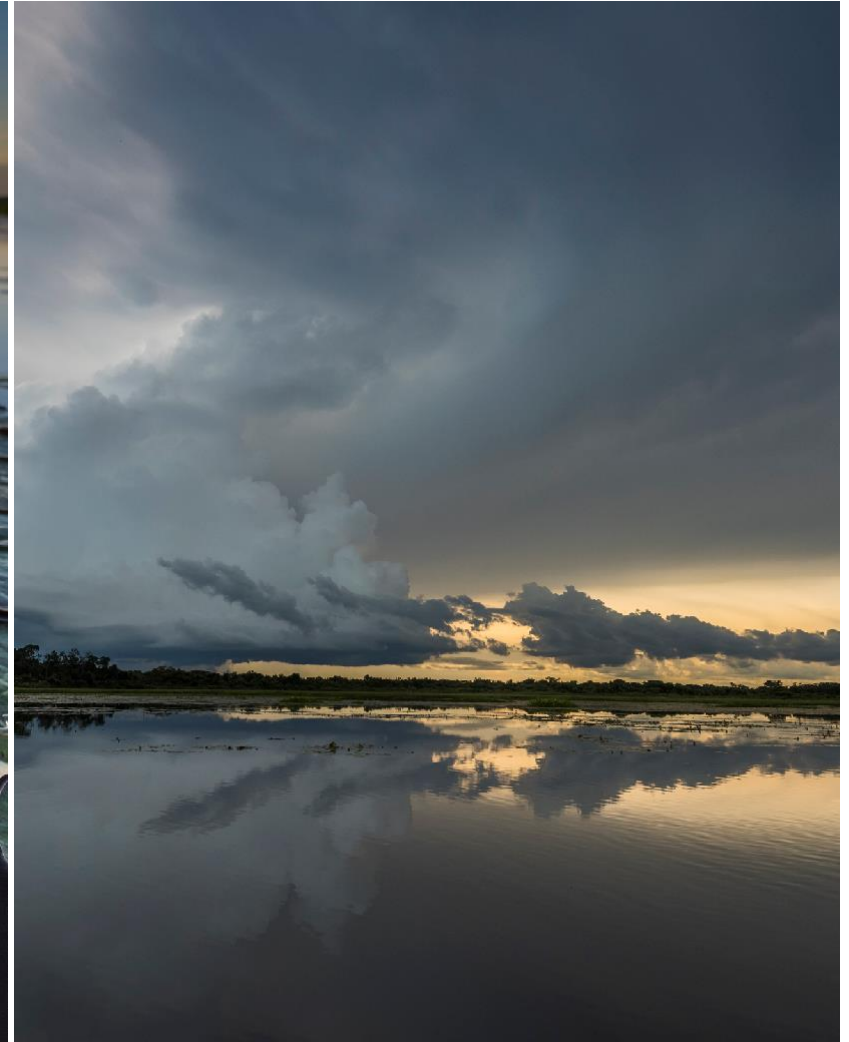


BIODIVERSITY

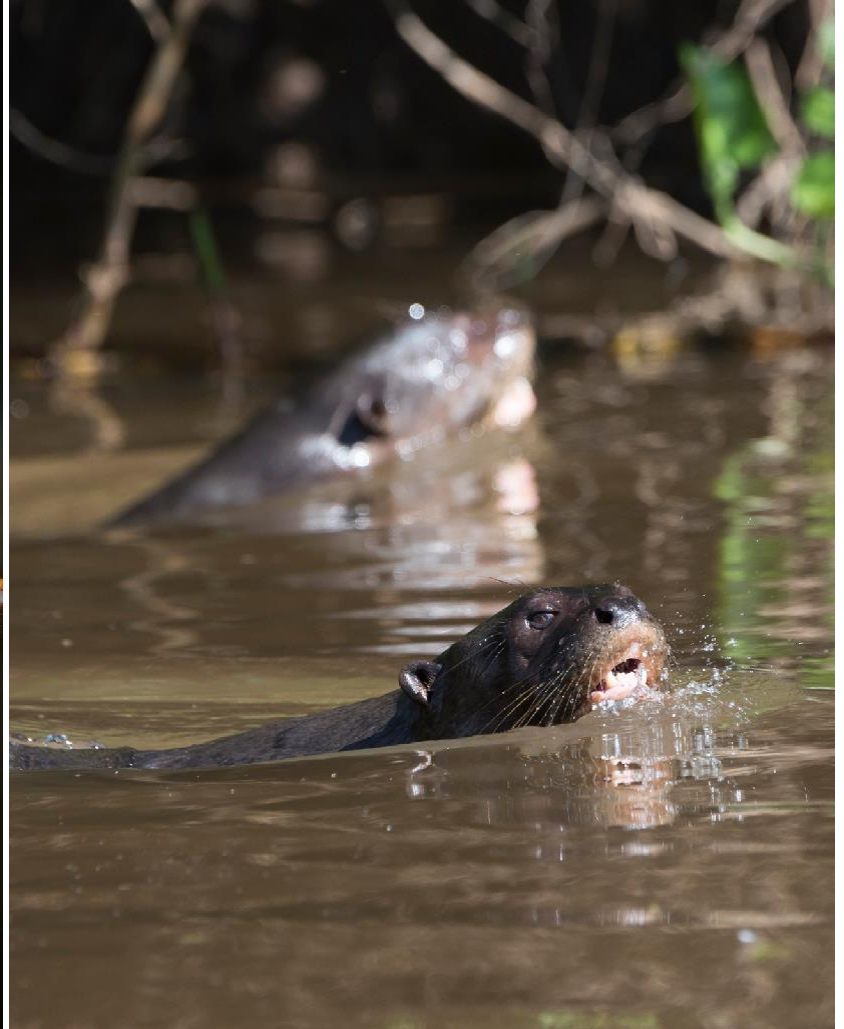
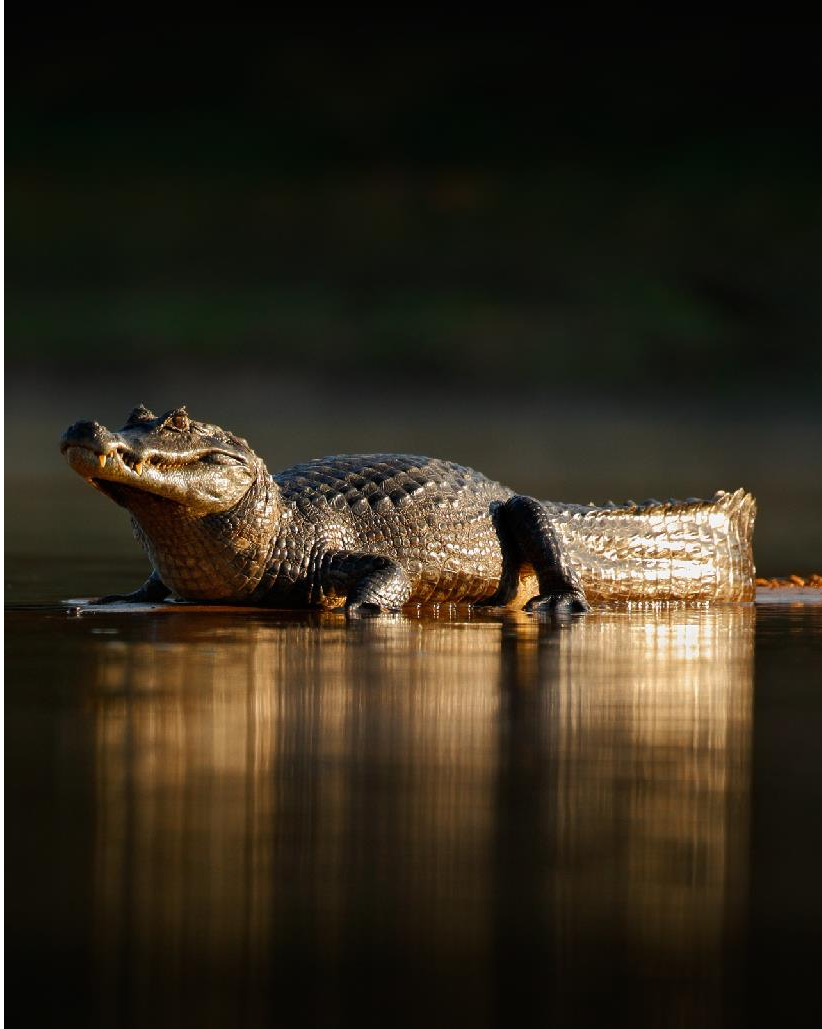
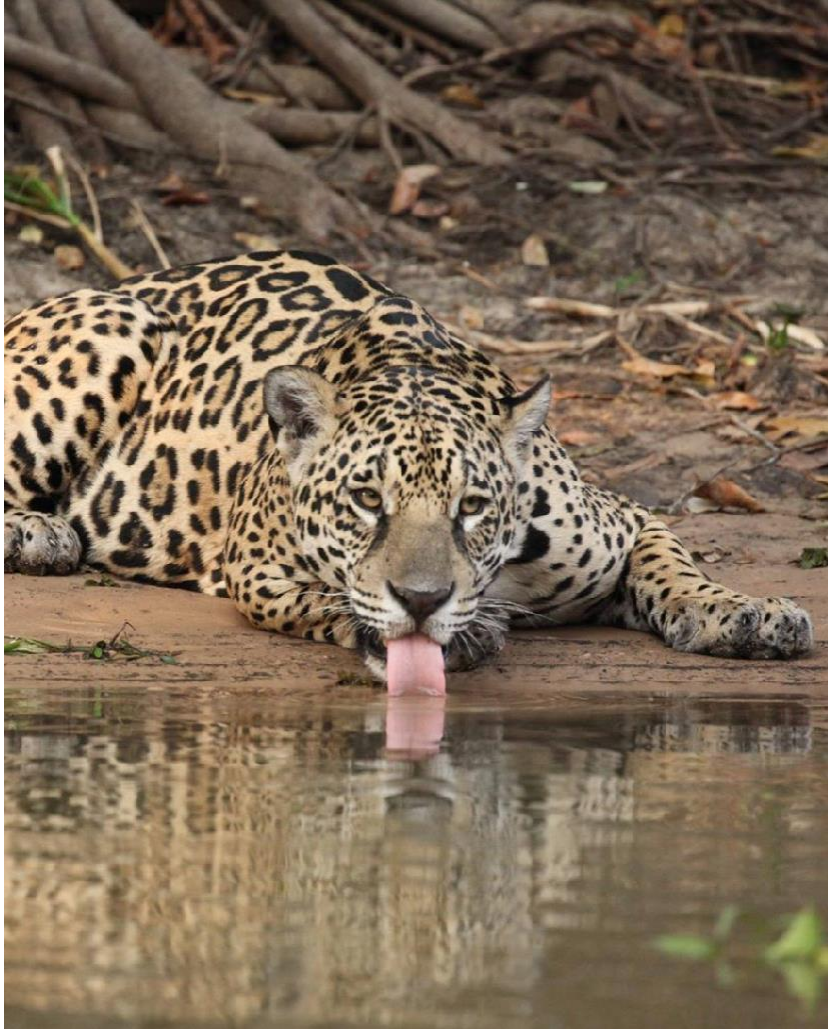


SOIL CONSERVATION

LANDSCAPE



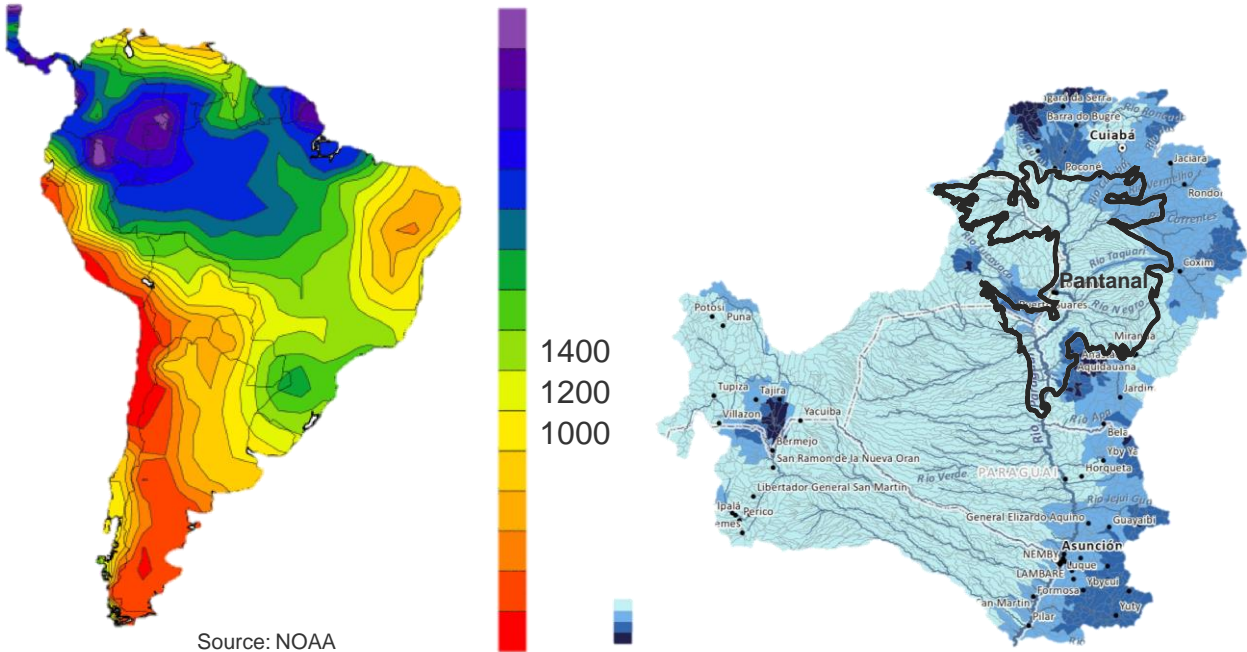
BIODIVERSITY



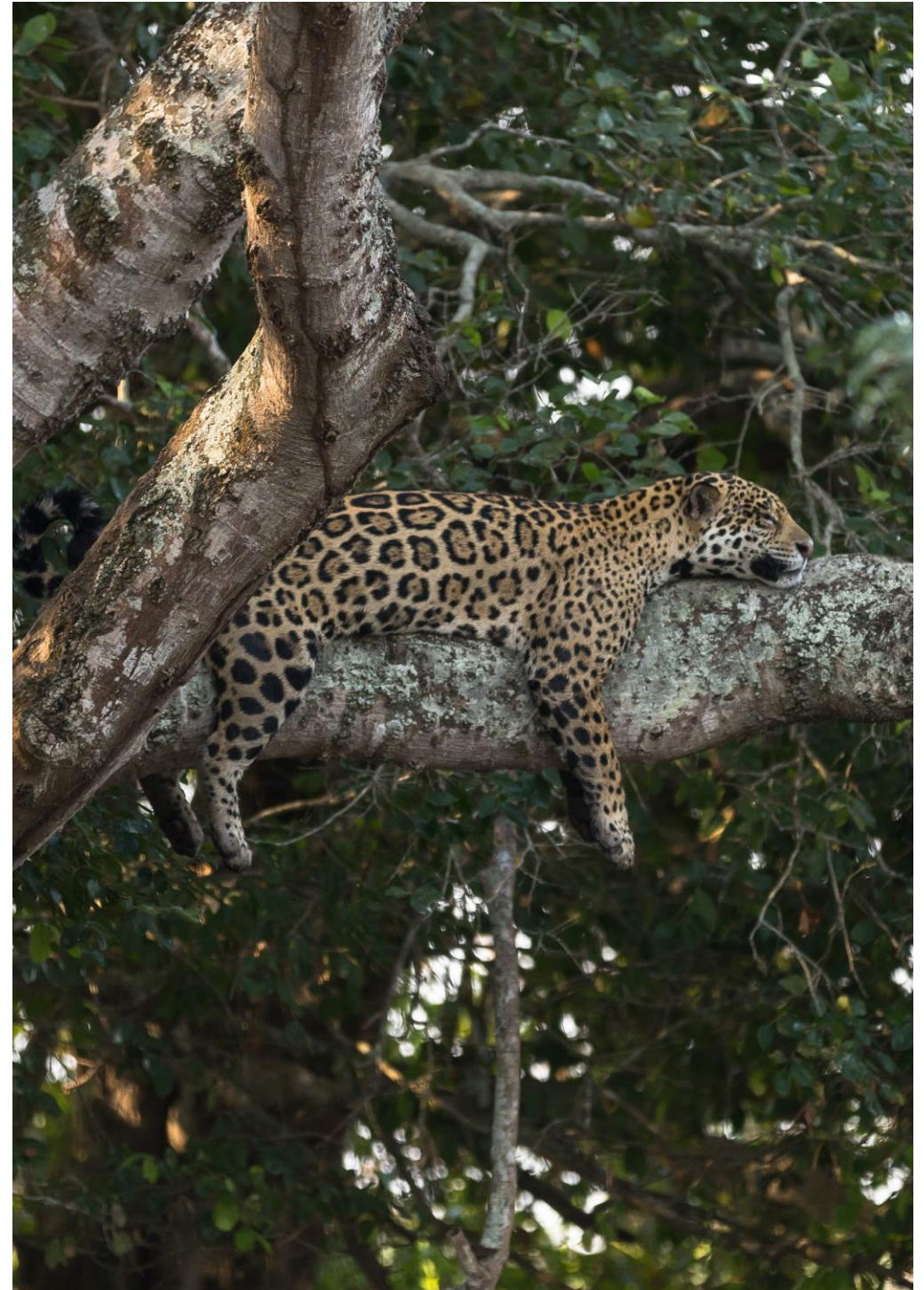
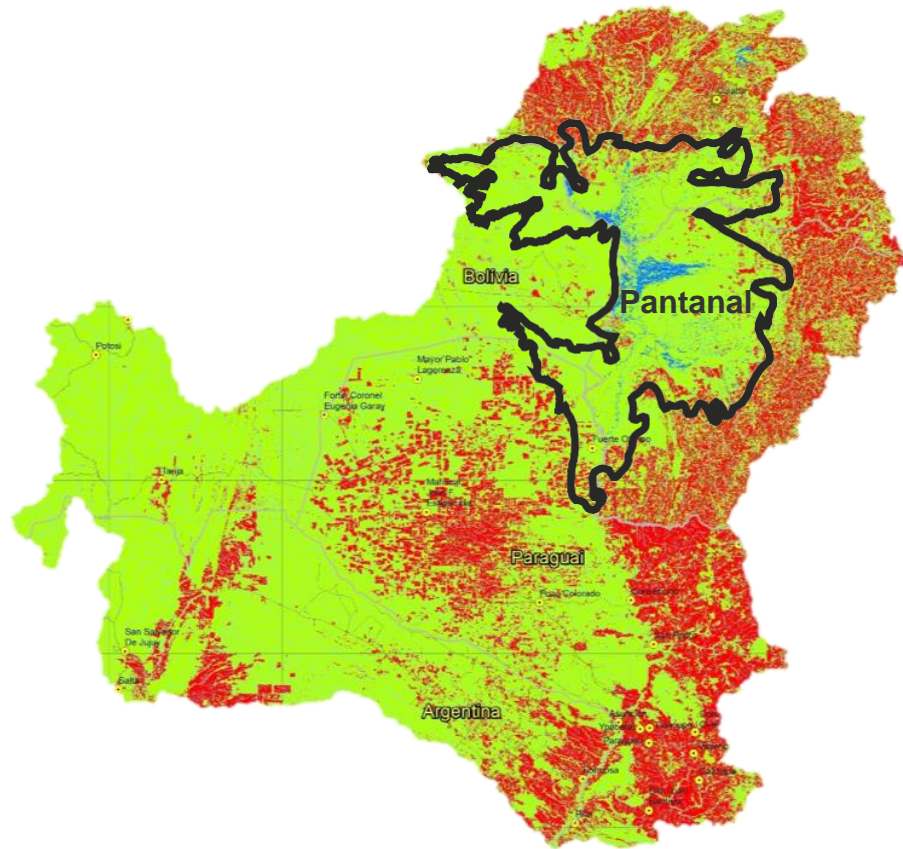
BIODIVERSITY



THE PANTANAL'S WATERS COMES FROM CERRADO



THE PANTANAL IS AT HIGH RISK



CERRADO PANTANAL STRATEGY (FY18-FY22)

Strategy

1. Sustainable Landscapes

Sub-strategy

- Strengthening of protected area management
- Promoting the creation of public and private protected areas
- Landscape planning
- Restoration of ecosystem services
- Integrate water management

2. Better Productive Practices

Sub-strategy

- Responsible Markets
- Good Productive Practices

3. Political and Social Advocacy

Sub-strategy

- Advocacy in Financial institutions
- Strengthening civil society actors
- Strengthening of Public Institutions
- Advocacy in Public Policies and Private & Practices
- The Pantanal Challenge

4. Communication

Sub-strategy

- Communication for conservation
- Communication to support advocacy
- Communication for fundraising
- Communication for community engagement

How we do it!

- Pantanal Biosphere Reserve
- Jequitibá Basin
- Best Agricultural Practices
- CEPF BAP
- CEPF MOSAICO
- Ecological Corridors
- Legalframework Studies
- Management of Protected Areas Closed Pantanal
- Sustainable Finance
- Pact Strengthening
- Spatial Data Infrastructure
- Pantanal Initiative
- CAR - Trinational Exchange
- Water Management Improvements
- Pantanal Observatory

PaSos: Paisajes Sostenibles del Pantanal, Cerrado y Bosque Seco Chiquitano



3 YEARS PROJECT

€ 2.5 million



MAIN PILLARS

Three countries
Protected areas
Strengthening governance
Climate Smart production systems
Supporting social platforms



INVOLVING

1,8 million people
21 municipalities
21 NGOs
10 protected areas
5 universities





THANK YOU

Cássio Bernardino

*Conservation Officer
Cerrado Pantanal Program*



cassiobernardino@wwf.org.br



wwf.org.br



facebook.com/WWFBrasil



twitter.com/wwf_brasil



instagram.com/wwfbrasil/