



# TOWARDS INTEGRATED APPROACHES FOR RECONCILING DEVELOPMENT AND CONSERVATION OBJECTIVES:

## THE LANDSCAPE APPROACH

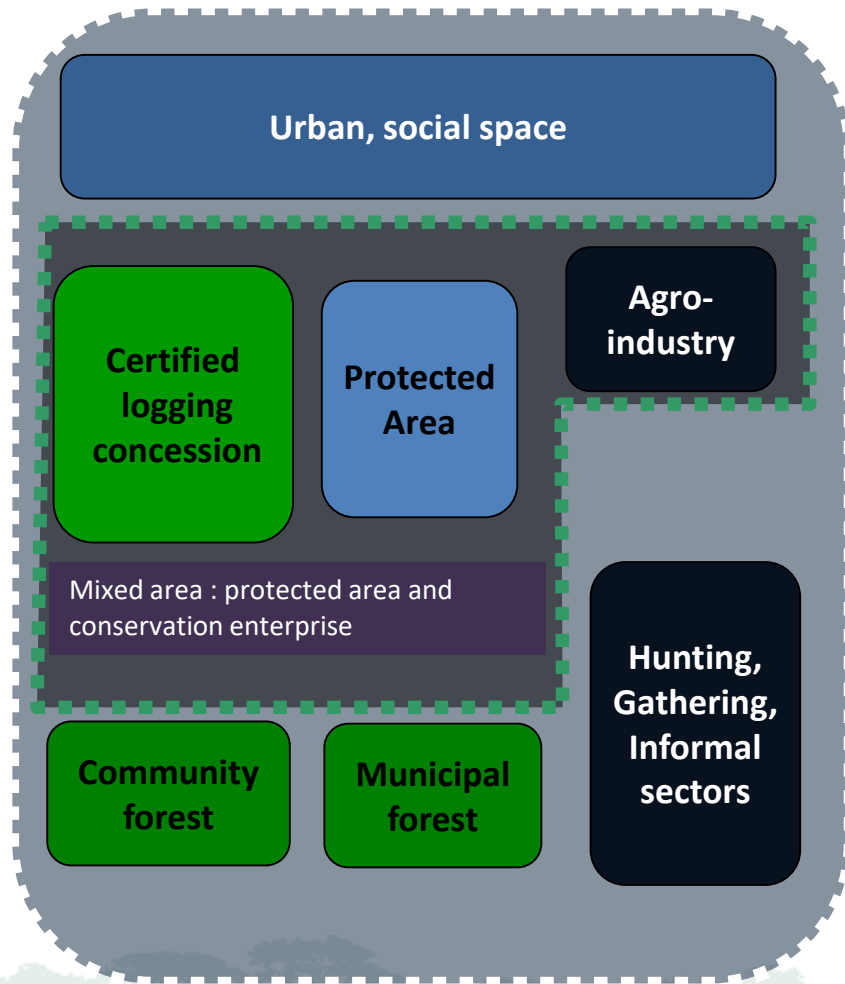
Robert Nasi

16 October 2018



RESEARCH  
PROGRAM ON  
Forests, Trees and  
Agroforestry

# What is a integrated landscape approach?



Environmental services

Local incomes

Taxes, fiscal revenues

Sustain rural population

- A landscape is both a geographic area and an approach to the sustainable management of human and natural resources within this geographic area
- Geographically, the landscape must encompass a land base large enough to represent all the uses and values: forests, farms, protected areas, rivers, mines, towns...

*Billand & Nasi 2006*

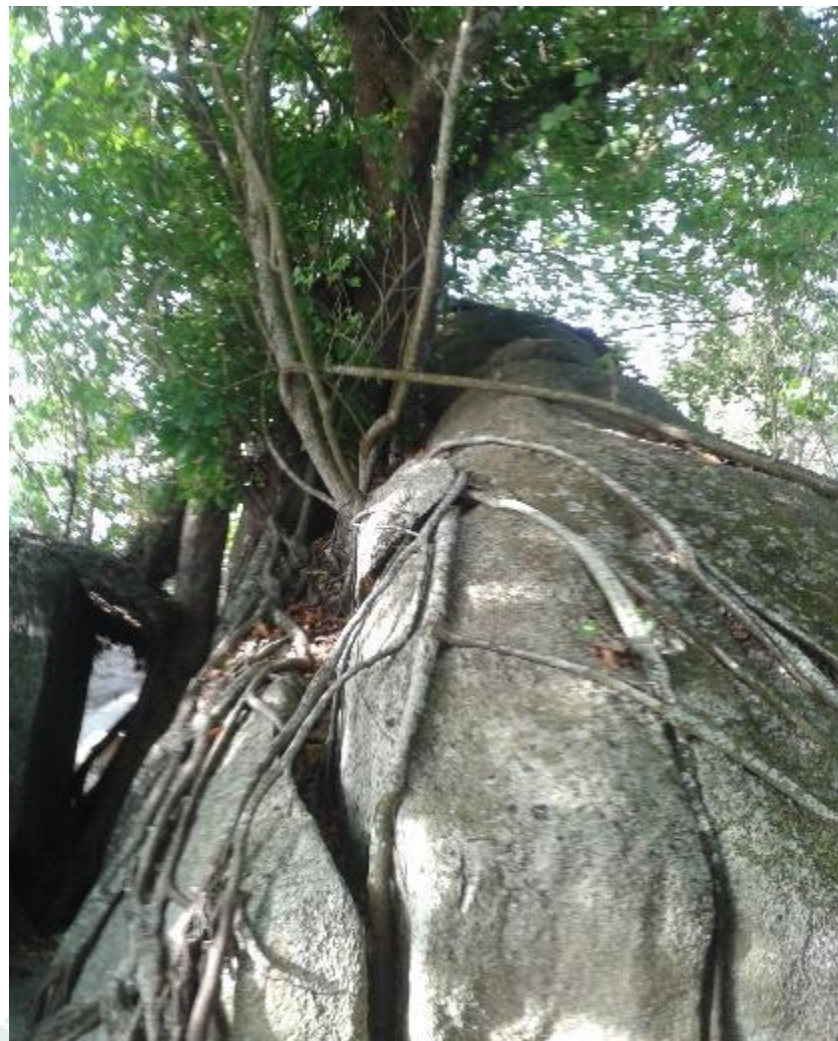
# Operationalising the landscape approach: From theory to practice





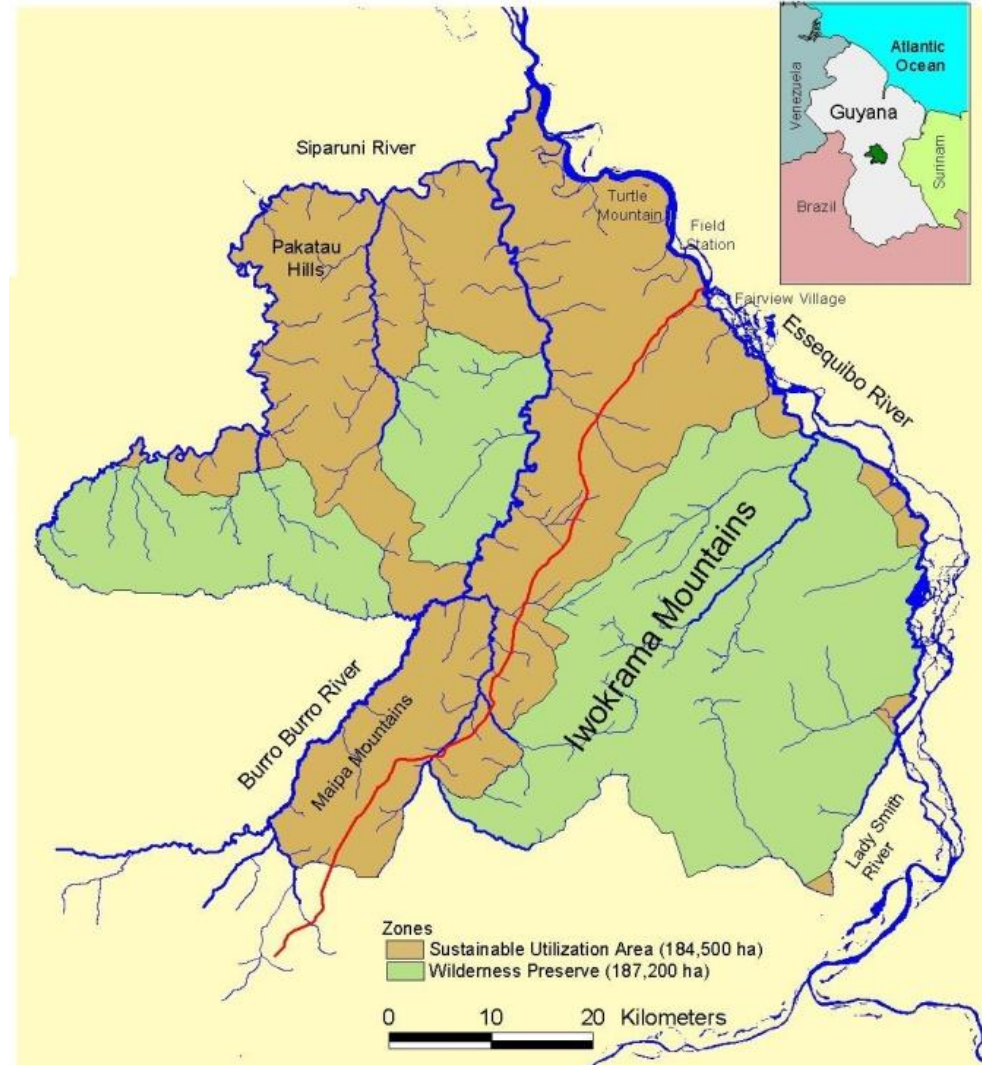
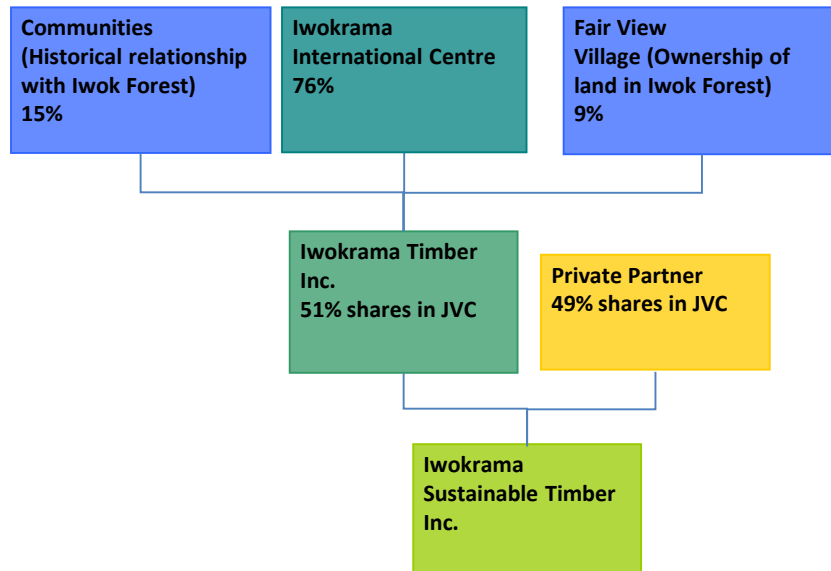
# Optimizing landscape approaches

- Evaluate progress
- Establish good governance structures
- Evolve from panacea thinking
- Engage multiple stakeholders
- Embrace dynamic processes

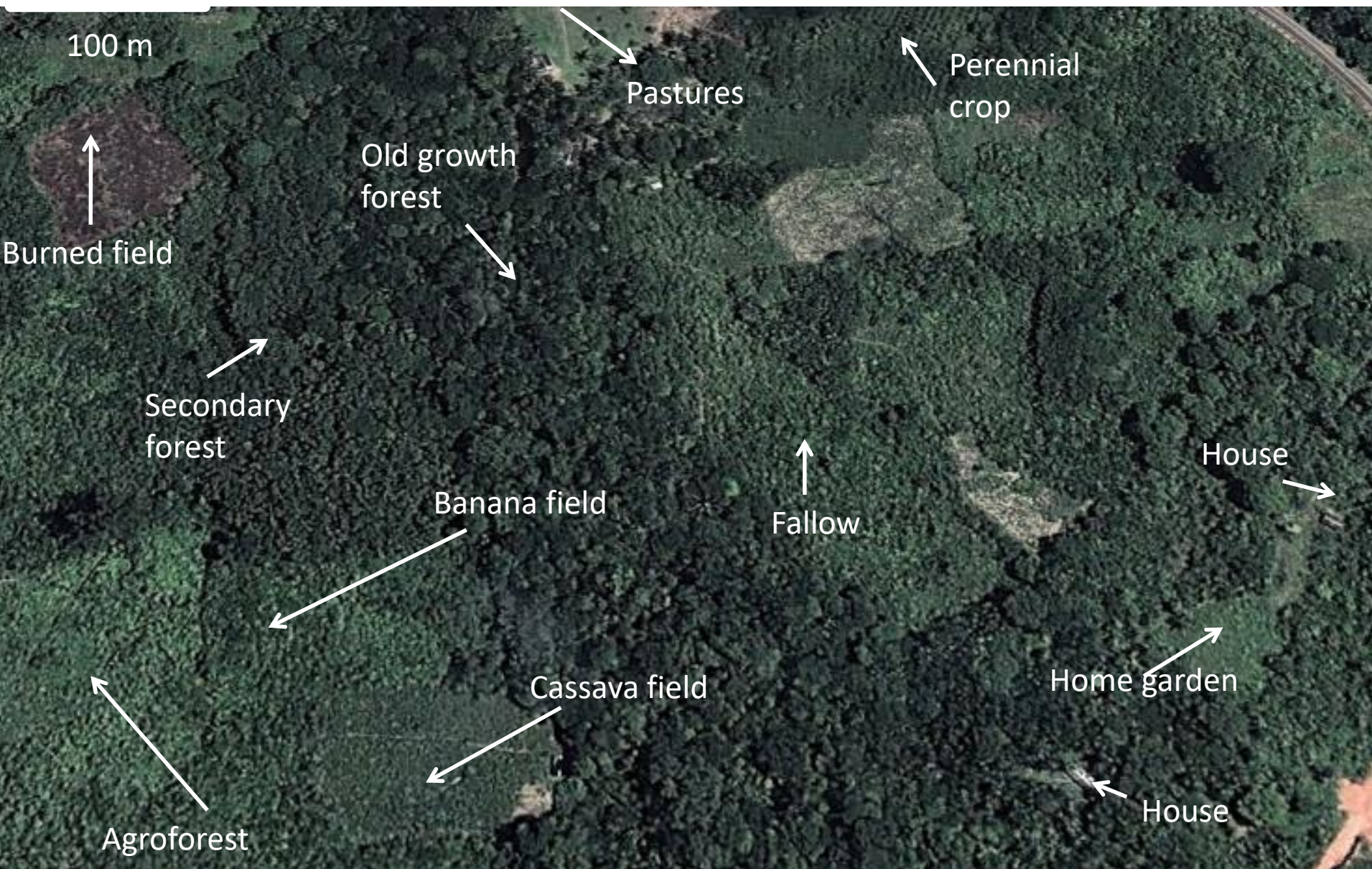


# Iwokrama: Integrating Conservation with Sustainable Use

- Sustainable Forestry
- Ecotourism
- Training
- Intellectual Property & Services









# Some fundamentals for operationalizing landscape approaches





## Build strong networks

- Thematic or geographic focus
- Independent facilitation
- Incorporate boundary partners (political and implementing)
- Bridge ideological gaps



# Sustainable land use: an economic activity?

\$6.3 trillion lost per year to land degradation

Net benefit \$0.7 - \$9 trillion by achieving Bonn Challenge (land restoration of 200 million ha)

\$7–30 in economic benefits for every dollar invested

HUGE COSTS TO SOCIETY...  
IMPRESSIVE RETURNS...

***WHY ARE WE NOT DOING IT ?***



WRI, 2017;

# We need a paradigm change

## Prevalent paradigm

- High to very high costs per hectare conserved or restored
- ...with no financial return for the landowners
- Environmental benefits only
- ... perceived mostly being not marketable
- Not internalized
- Rely on public funding
- Top down

*Modified from Strassburg & Latawiec, 2014*

## New paradigm

- R&D and proper planning **lower the costs**
- ... provide increased incomes
- An industry that create **jobs**
- ... and the resulting Natural Capital provides **goods and services** to society
- Could be partially **internalized**
- **Blended finance** and active participation of the private sector
- **Bottom up**



# THANK YOU!



[cifor.org](http://cifor.org)  
[blog.cifor.org](http://blog.cifor.org)  
[ForestsTreesAgroforestry.org](http://ForestsTreesAgroforestry.org)



RESEARCH  
PROGRAM ON  
Forests, Trees and  
Agroforestry