



Green Deal Country Fiche

Yemen

Population in 2019
29,16 million habitants

Projected population in 2050
48,08 million habitants

Surface
528,0 thousands km²

Population density (2019)
55 habitants per km²

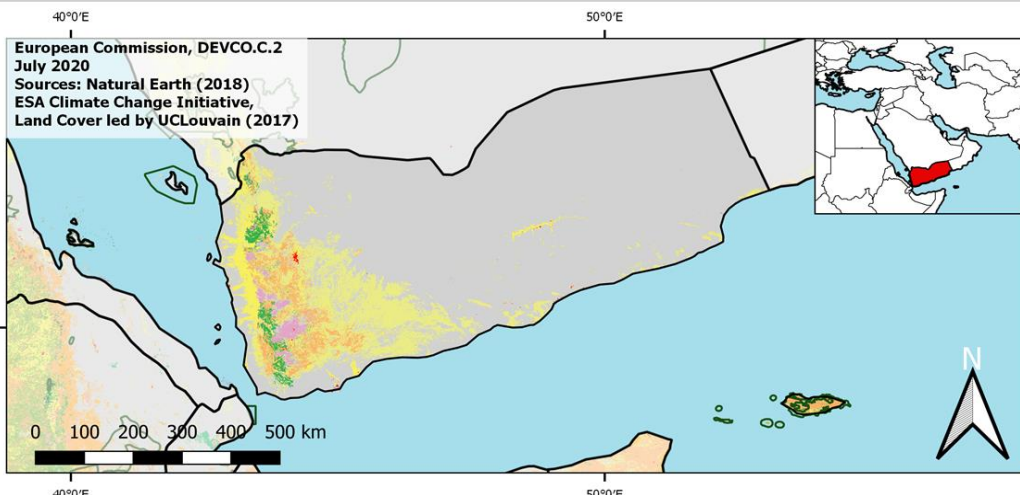
GDP per capita
774,33 US\$ (2019)

Population living below 1,90 \$/day
18,30 % in 2014

Human Development Index
0,47 (2019, UN target: >0,8)

Legend

- Main Protected Areas
- Land Cover Classes**
- Cropland rainfed
- Cropland irrigated
- Mosaic crops/nat.veg
- Tropical dense forest
- Deciduous forest
- Coniferous forest
- Mixed forest
- Shrubland
- Grassland
- Sparse vegetation
- Swamp forest
- Mangrove
- Swamps
- Urban areas
- Bare areas
- Water bodies
- Permanent snow and ice



Share of global
emissions (2018)
0,028%

NDC: Mitigation Summary

(NDC from 2015)

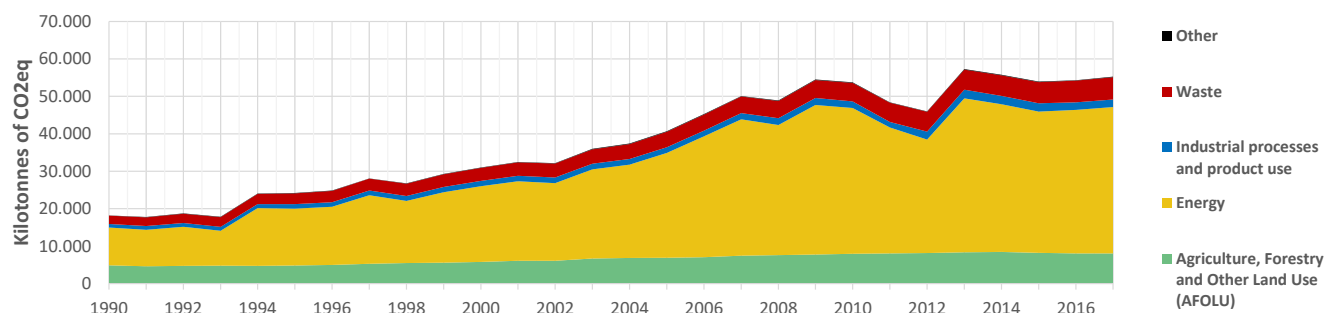
Yemen has not ratified the Paris Agreement. Its 2015 INDC indicated a 14% (13% conditional) GHG reduction by 2030 below BAU, representing an estimated total cumulative reduction of 35 MtCO₂eq between 2020-2030. Sectors : energy, agriculture and waste.

INTPA "NDC Group"

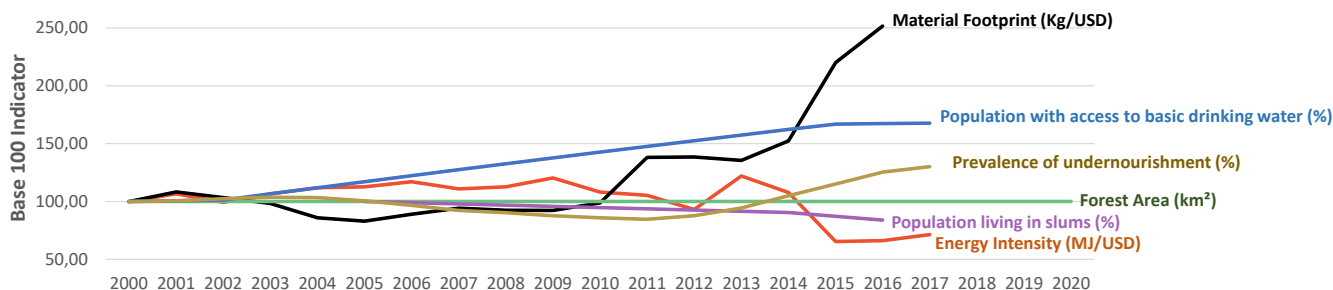
Group 3 - Suggested focus on adaptation for EU cooperation

Pillar	Indicator Name and Unit	Value	Interpretation
Green, circular and low-carbon economy	Ecological footprint (Consumption in global hectares per capita, 2017)	0,61 gh/cap	Within the global sustainable threshold of 1,6 gha per capita
	Recycling and composting rate (% of total solid waste, 2017)	NA	No Data
	Water productivity (USD of GDP per m ³ of water extracted, 2015)	6,79 \$/m ³	Low water productivity (minimum EU MS value : 10 \$/m ³)
	Material footprint (Kg of raw materials used per USD of GDP, 2010)	2,22 kg/\$	Larger footprint than EU average (0,97), but within range of EU MS
	Sustainable Consumption and Production Policy Framework (2017)	C2	No SCP policy instrument or coordination mechanism reported
	Change in emissions (production) vs change in GDP (2007-2017)	+11% / +24%	Relative decoupling: emissions increased, but slower than GDP
Biodiversity & Forests	Terrestrial protected areas (% of total land area, 2020)	0,77%	Significant efforts are needed to meet CBD Target of 17% by 2020
	Threatened species (% of total evaluated species, 2019)	10,48%	High share of threatened species, risk missing SDG target 15.5
	Population around protected areas (% total pop., 10km buffer, 2015)	NA	No Data
	Forest area change (% change between 2015 and 2020)	0 %	Forest cover at equilibrium, SDG Target 15.2 achieved
	Sustainable forest management (% area with long-term plan, 2020)	NA	No Data
	Employment in forestry (number of full-time equivalents, 2015)	NA	No Data
Green and Smart Cities	Proportion of urban population living in slums (% in 2016)	56,40%	Significant efforts needed for SDG Target 11.1 (upgrade by 2030)
	Satisfaction with public transport (% satisfied, 2018)	40,50%	Low satisfaction with public transport (UN SDSN interpretation)
	Solid waste uncollected or dumped in the open (% of total, 2017)	50-90%	Significant efforts are needed to meet SDG Target 11.6
	Wastewater receiving primary treatment (% of total)	0,00%	Significant efforts needed to ensure at least full primary treatment
	Urban air pollution (µg/m ³ of PM 2.5 particules, 2016)	44,3 µg/m ³	Very high air pollution, above key guideline values (WHO, EU, US)
	Alignment of national DRR strategies to Sendai Framework (0-1 Score)	NA	No Data
Sustainable Energy	Access to electricity (% of population, 2018)	62,00%	Further efforts still needed to meet SDG Target 7.1 of 100% by 2030
	Renewable energy (% of total energy consumption, 2016)	4,53%	Very low share of renewables, low contribution to SDG Target 7.2
	Renewable electricity (% of electricity production, 2015)	NA	No Data
	Access to clean cooking (% of total population with access, 2018)	66,00%	Further efforts still needed for universal access to clean cooking
	Fossil fuel subsidies (% of GDP, 2015)	0,21%	Within the range of subsidy shares from EU-27 MS
	Energy Intensity (megajoules per constant 2011 PPP GDP, 2017)	2,04 MJ/\$	Energy Intensity within range of EU-MS, below the EU-27 average
Food systems: from Farms to Forks	Rural poverty (% of rural population below 1\$90 a day, 2014)	24,00%	Further efforts needed to achieve SDG Target 1.1 (0% by 2030)
	Food security (% of population in food crisis or worse, 2019)	53,00%	Significant efforts needed to meet SDG Target 2.1 of 0% by 2030
	Nutrition (% of children under 5 who are stunted, 2013)	46,40%	Significant efforts needed to meet SDG Target 2.2 of 0% by 2030
	Fertilizer consumption (kg per hectare, 2016)	16,4 kg/ha	Below lowest EU MS value (60 kg/ha in Romania)
	Land degradation (national area with declining productivity 1999-2013)	NA	Significant efforts needed to meet SDG Target 15.3 of 0% by 2030
	Agriculture and FOLU share of emissions (% of CO ₂ eq in 2017)	14,62%	Medium share of emissions - Relevant for climate mitigation
Water & Oceans	Population using at least basic drinking water (% of pop., 2017)	63,47%	Further progress needed to meet SDG Target 6.1 (100% by 2030)
	Population using at least basic sanitation services (% of pop., 2017)	59,10%	Significant efforts needed to meet SDG Target 6.2 (100% by 2030)
	Water scarcity (m ³ of renewable freshwater per capita, 2014)	NA	No Data
	Water stress (water withdrawal as % of total available water, 2014)	NA	No Data
	Marine protected areas (% of total marine area, 2020)	0,48%	Significant efforts needed to achieve CBD Target of 10% by 2020
	Fish stocks overexploited or collapsed (% of fish stocks, 2014)	No Data	No Data

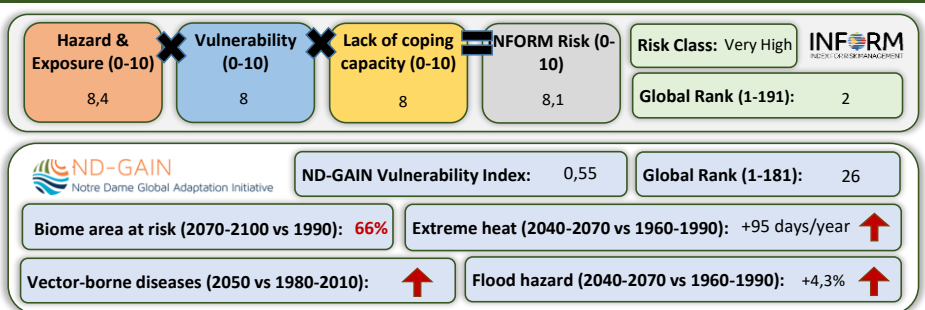
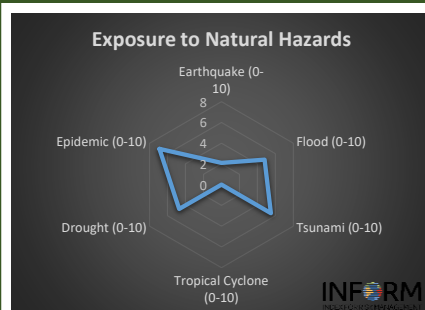
Greenhouse Gas Emission History (Production-based)



Historic Trends of selected indicators per Green Deal Pillar (Base 100)



Climate Adaptation Needs



2020 EPI Country Rank (out of 180)

NA

2020 EPI Score [0=worst, 100=best]

NA

No evaluation at the
Environmental Performance Index

SDG Index 2020

(UN SDSN & Bertelsmann Stiftung)



Legend:

- SDG achieved
- Challenges remain
- Significant challenges remain
- Major challenges remain
- Information unavailable