



Green Deal Country Fiche

Viet Nam

Population in 2019
96,46 million habitants

Projected population in 2050
109,61 million habitants

Surface
331,0 thousands km²

Population density (2019)
291 habitants per km²

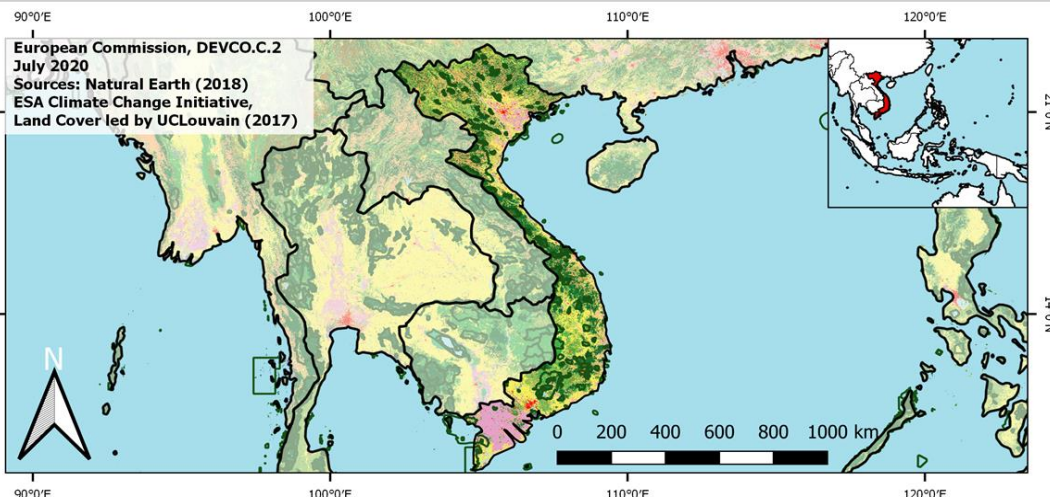
GDP per capita
2.715,28 US\$ (2019)

Population living below 1,90 \$/day
1,90 % in 2018

Human Development Index
0,70 (2019, UN target: >0,8)

Legend

- Main Protected Areas
- Land Cover Classes**
 - Cropland rainfed
 - Cropland irrigated
 - Mosaic crops/nat.veg
 - Tropical dense forest
 - Deciduous forest
 - Coniferous forest
 - Mixed forest
 - Shrubland
 - Grassland
 - Sparse vegetation
 - Swamp forest
 - Mangrove
 - Swamps
 - Urban areas
 - Bare areas
 - Water bodies
 - Permanent snow and ice



Share of global emissions (2018)
0,565%

NDC: Mitigation Summary

(NDC from 2020)

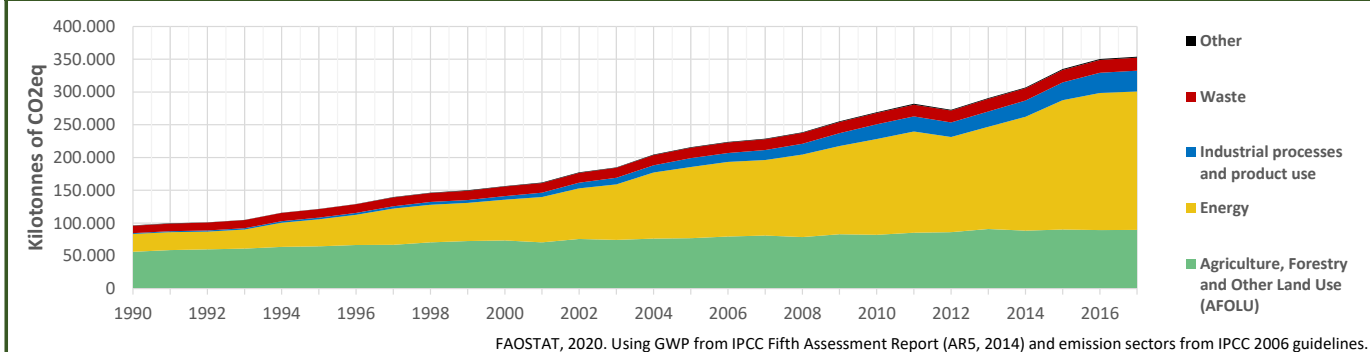
Viet Nam unconditionally commits to reduce its total GHG emissions by about 9% (83.9 MtCO₂eq) below BAU by 2030. Conditionally, this could go up to 27% (250.8 MtCO₂eq) below BAU. Actions focus on energy, agriculture, LULUCF, waste and industrial processes

INTPA "NDC Group"

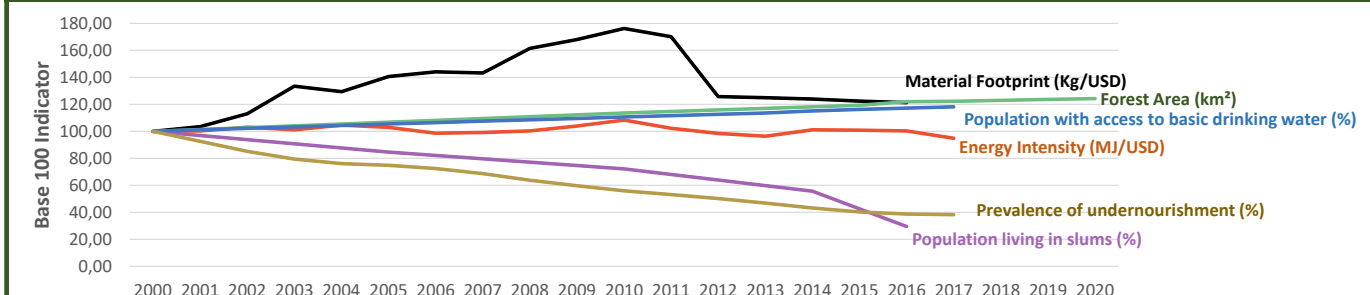
Group 3 - Suggested focus on adaptation for EU cooperation

Pillar	Indicator Name and Unit	Value	Interpretation
Green, circular and low-carbon economy	Ecological footprint (Consumption in global hectares per capita, 2017)	2,24 gh/cap	Above the global sustainable threshold of 1,6 gha per capita
	Recycling and composting rate (% of total solid waste, 2017)	NA	No Data
	Water productivity (USD of GDP per m ³ of water extracted, 2015)	2,07 \$/m ³	Highly inefficient use of water resources
	Material footprint (Kg of raw materials used per USD of GDP, 2010)	5,55 kg/\$	Highly resource-inefficient production and consumption practices
	Sustainable Consumption and Production Policy Framework (2017)	D	No policy framework for SCP has been reported to the UN
	Change in emissions (production) vs change in GDP (2007-2017)	+56% / +189%	Relative decoupling: emissions increased, but slower than GDP
Biodiversity & Forests	Terrestrial protected areas (% of total land area, 2020)	7,63%	Significant efforts are needed to meet CBD Target of 17% by 2020
	Threatened species (% of total evaluated species, 2019)	11,61%	High share of threatened species, risk missing SDG target 15.5
	Population around protected areas (% total pop., 10km buffer, 2015)	18,14%	Important share of population - consider landscape approach
	Forest area change (% change between 2015 and 2020)	+4,13 %	Forest cover is increasing, SDG Target 15.2 achieved
	Sustainable forest management (% area with long-term plan, 2020)	47,87%	Significant efforts needed to meet SDG Target 15.2 (100% by 2020)
	Employment in forestry (number of full-time equivalents, 2015)	NA	No Data
Green and Smart Cities	Proportion of urban population living in slums (% in 2016)	14,40%	SDG Target 11.1 not yet met, but in range of EU MS values
	Satisfaction with public transport (% satisfied, 2018)	73,28%	High satisfaction with public transport (UN SDSN interpretation)
	Solid waste uncollected or dumped in the open (% of total, 2017)	40-80%	Significant efforts are needed to meet SDG Target 11.6
	Wastewater receiving primary treatment (% of total)	10,00%	Significant efforts needed to ensure at least full primary treatment
	Urban air pollution (µg/m ³ of PM 2.5 particles, 2016)	30,13 µg/m ³	Above EU 2020 target (18µg/m ³) but below US Standard (35µg/m ³)
	Alignment of national DRR strategies to Sendai Framework (0-1 Score)	NA	No Data
Sustainable Energy	Access to electricity (% of population, 2018)	100,00%	SDG Target 7.1 has been achieved
	Renewable energy (% of total energy consumption, 2016)	32,71%	Higher share of renewables than the EU 2020 target of 20%
	Renewable electricity (% of electricity production, 2015)	36,73%	Medium share of renewable electricity
	Access to clean cooking (% of total population with access, 2018)	73,10%	Further efforts still needed for universal access to clean cooking
	Fossil fuel subsidies (% of GDP, 2015)	0,55%	Within the range of subsidy shares from EU-27 MS
	Energy Intensity (megajoules per constant 2011 PPP GDP, 2017)	5,55 MJ/\$	Energy Intensity above EU average, but still within range of EU MS
Food systems: from Farms to Forks	Rural poverty (% of rural population below \$90 a day, 2016)	2,80%	Some efforts needed to achieve SDG Target 1.1 (0% by 2030)
	Food security (% of pop in moderate or severe insecurity, 2016-2018)	14,50%	Progress is still needed to meet SDG Target 2.1 of 0% by 2030
	Nutrition (% of children under 5 who are stunted, 2017)	23,80%	Significant efforts needed to meet SDG Target 2.2 of 0% by 2030
	Fertilizer consumption (kg per hectare, 2016)	429,78 kg/ha	Among top 25% of countries with most intensive fertilizer use
	Land degradation (national area with declining productivity 1999-2013)	9,78%	Progress is still needed to meet SDG Target 15.3 of 0% by 2030
	Agriculture and FOLU share of emissions (% of CO ₂ eq in 2017)	25,28%	Medium share of emissions - Relevant for climate mitigation
Water & Oceans	Population using at least basic drinking water (% of pop., 2017)	94,72%	Further progress needed to meet SDG Target 6.1 (100% by 2030)
	Population using at least basic sanitation services (% of pop., 2017)	83,50%	Further progress needed to meet SDG Target 6.2 (100% by 2030)
	Water scarcity (m ³ of renewable freshwater per capita, 2014)	3884 m ³ /cap	Water shortages should be only irregular/local (>1700m ³ /capita)
	Water stress (water withdrawal as % of total available water, 2014)	12,79%	Low water stress (less than 25% of resource extraction)
	Marine protected areas (% of total marine area, 2020)	0,48%	Significant efforts needed to achieve CBD Target of 10% by 2020
	Fish stocks overexploited or collapsed (% of fish stocks, 2014)	1,56%	SDG Target 14.4 of 0% by 2020 not met, progress still needed

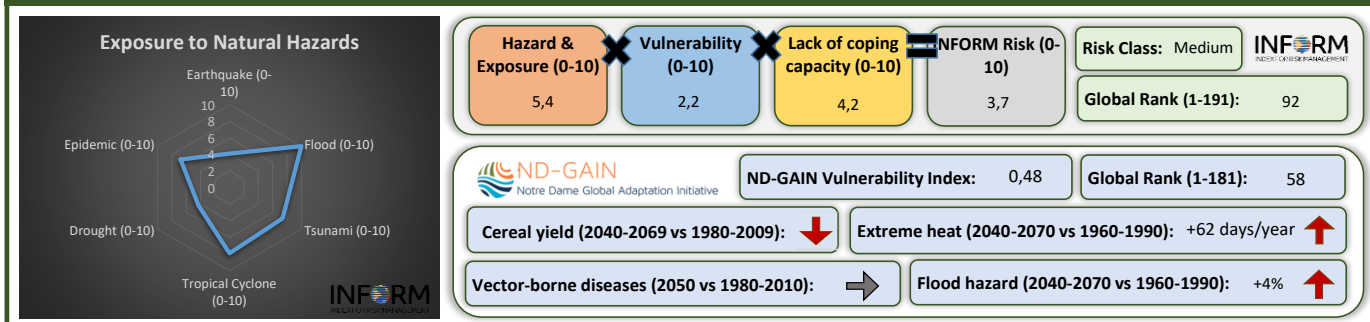
Greenhouse Gas Emission History (Production-based)



Historic Trends of selected indicators per Green Deal Pillar (Base 100)



Climate Adaptation Needs



Environmental Performance Index 2020

2020 EPI Country Rank (out of 180)

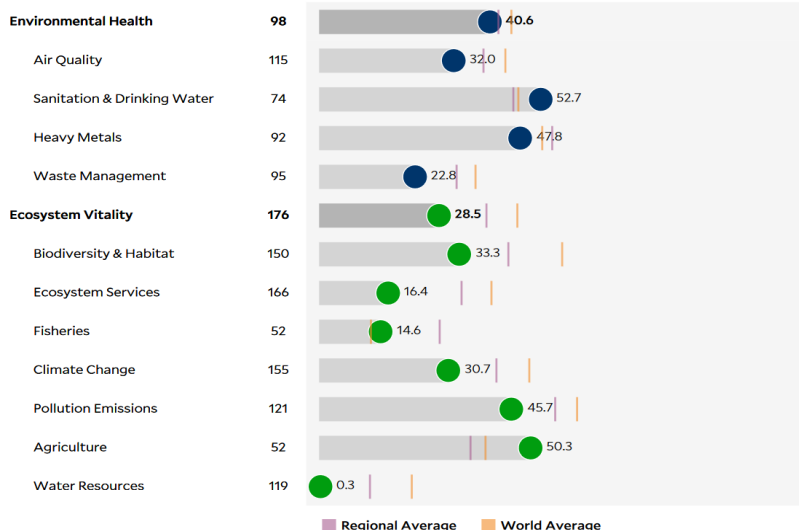
141

2020 EPI Score [0=worst, 100=best]

33,4

Issue Categories

Rank [/180]



SDG Index 2020

(UN SDSN & Bertelsmann Stiftung)



Legend:

- SDG achieved (green circle)
- Challenges remain (yellow circle)
- Significant challenges remain (orange circle)
- Major challenges remain (red circle)
- Information unavailable (grey circle)