



## Green Deal Country Fiche

### Uruguay

Population in 2019  
3,46 million habitants

Projected population in 2050  
3,64 million habitants

Surface  
176,2 thousands km<sup>2</sup>

Population density (2019)  
20 habitants per km<sup>2</sup>

GDP per capita  
16.190,13 US\$ (2019)

Population living below 1,90 \$/day  
0,10 % in 2018

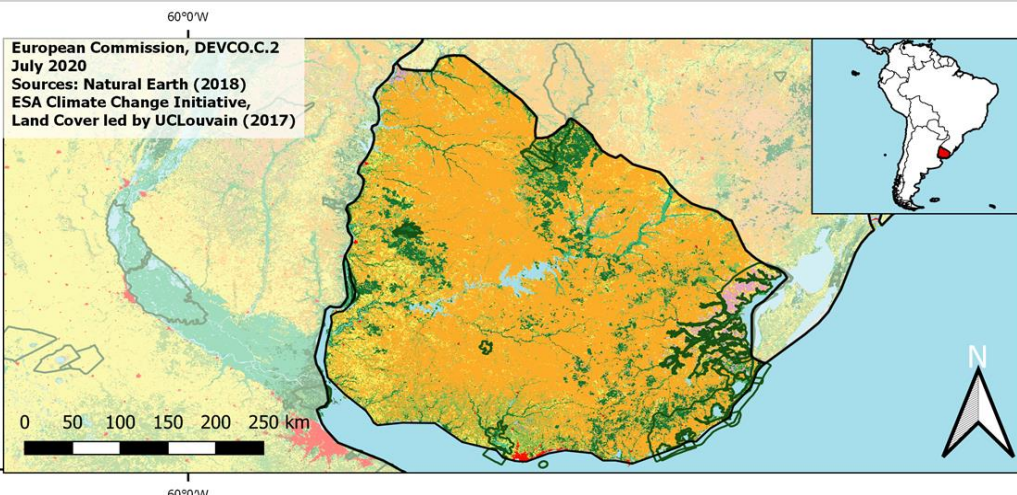
Human Development Index  
0,82 (2019, UN target: >0,8)

#### Legend

□ Main Protected Areas

#### Land Cover Classes

- Cropland rainfed
- Cropland irrigated
- Mosaic crops/nat.veg
- Tropical dense forest
- Deciduous forest
- Coniferous forest
- Mixed forest
- Shrubland
- Grassland
- Sparse vegetation
- Swamp forest
- Mangrove
- Swamps
- Urban areas
- Bare areas
- Water bodies
- Permanent snow and ice



Share of global  
emissions (2018)  
0,019%

#### NDC: Mitigation Summary

(NDC from 2017)

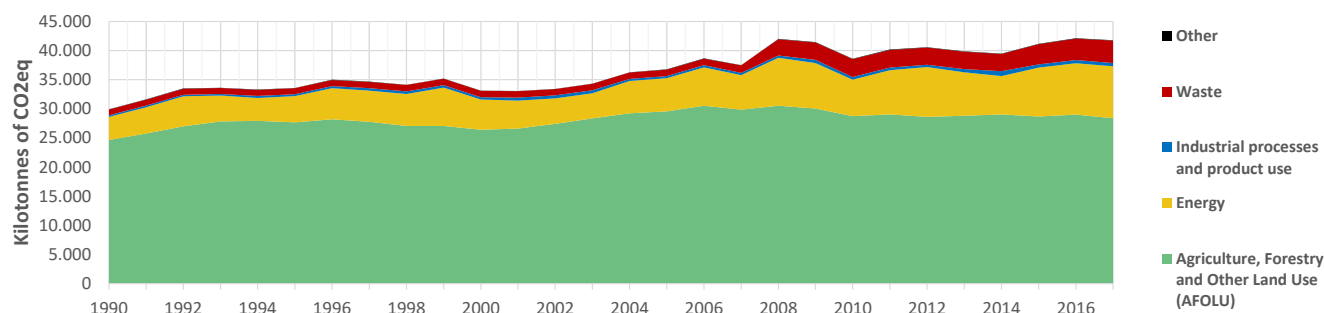
Uruguay presents a series of 2025 mitigation objectives in terms of GDP emission intensity per gas and sector. Specific objectives are included related to food production (beef) and LULUCF (carbon pools in forests, grasslands, peatlands and croplands).

#### INTPA "NDC Group"

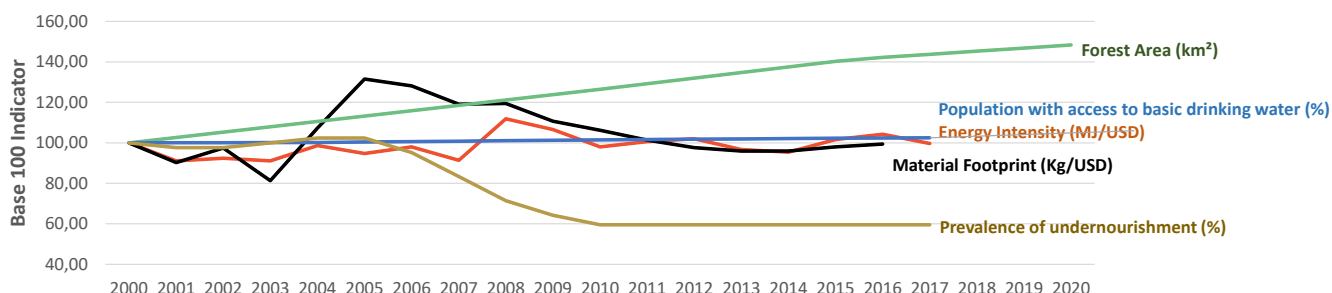
Group 3 - Suggested focus on adaptation for EU cooperation

Pillar	Indicator Name and Unit	Value	Interpretation
Green, circular and low-carbon economy	Ecological footprint (Consumption in global hectares per capita, 2017)	NA	No Data
	Recycling and composting rate (% of total solid waste, 2017)	5-10%	Low recycling and composting rate (overall EU-27 value = 45%)
	Water productivity (USD of GDP per m <sup>3</sup> of water extracted, 2010)	10,36 \$/m <sup>3</sup>	Less water efficient than EU average, but within range of EU MS
	Material footprint (Kg of raw materials used per USD of GDP, 2010)	2,42 kg/\$	Larger footprint than all EU-27 Member States
	Sustainable Consumption and Production Policy Framework (2017)	D	No policy framework for SCP has been reported to the UN
	Change in emissions (production) vs change in GDP (2007-2017)	+5% / +141%	Relative decoupling: emissions increased, but slower than GDP
Biodiversity & Forests	Terrestrial protected areas (% of total land area, 2020)	3,61%	Significant efforts are needed to meet CBD Target of 17% by 2020
	Threatened species (% of total evaluated species, 2019)	29,75%	High share of threatened species, risk missing SDG target 15.5
	Population around protected areas (% total pop., 10km buffer, 2015)	NA	No Data
	Forest area change (% change between 2015 and 2020)	+5,78 %	Forest cover is increasing, SDG Target 15.2 achieved
	Sustainable forest management (% area with long-term plan, 2020)	55,42%	Significant efforts needed to meet SDG Target 15.2 (100% by 2020)
	Employment in forestry (number of full-time equivalents, 2015)	8370 FTE	Low share of total employment (<0,5% of total labor force in 2015)
Green and Smart Cities	Proportion of urban population living in slums (% in 2016)	NA	No Data
	Satisfaction with public transport (% satisfied, 2018)	57,72%	Medium satisfaction (UN SDSN interpretation)
	Solid waste uncollected or dumped in the open (% of total, 2017)	41%	Further efforts are needed to meet SDG Target 11.6
	Wastewater receiving primary treatment (% of total)	5,00%	Significant efforts needed to ensure at least full primary treatment
	Urban air pollution (µg/m <sup>3</sup> of PM 2.5 particules, 2016)	8,68 µg/m <sup>3</sup>	Within the World Health Organization guideline value of 10 µg/m <sup>3</sup>
	Alignment of national DRR strategies to Sendai Framework (0-1, 2017)	0	No Data
Sustainable Energy	Access to electricity (% of population, 2018)	100,00%	SDG Target 7.1 has been achieved
	Renewable energy (% of total energy consumption, 2016)	59,74%	High share of renewables in total energy consumption
	Renewable electricity (% of electricity production, 2015)	88,56%	High share of renewable electricity
	Access to clean cooking (% of total population with access, 2018)	>95%	Universal access to clean cooking has been achieved
	Fossil fuel subsidies (% of GDP, 2015)	0,00%	No fossil-fuel subsidies, SDG Target 12.C achieved
	Energy Intensity (megajoules per constant 2011 PPP GDP, 2017)	3,02 MJ/\$	Energy Intensity within range of EU-MS, below the EU-27 average
Food systems: from Farms to Forks	Rural poverty (% of rural population below 1\$90 a day, 2018)	NA	No Data
	Food security (% of pop in moderate or severe insecurity, 2016-2018)	25,30%	Significant efforts needed to meet SDG Target 2.1 of 0% by 2030
	Nutrition (% of children under 5 who are stunted, 2011)	10,70%	Significant efforts needed to meet SDG Target 2.2 of 0% by 2030
	Fertilizer consumption (kg per hectare, 2016)	143,67 kg/ha	Within range of EU MS values (below EU overall use of 153 kg/ha)
	Land degradation (national area with declining productivity 1999-2013)	18,45%	Significant efforts needed to meet SDG Target 15.3 of 0% by 2030
	Agriculture and FOLU share of emissions (% of CO2eq in 2017)	67,92%	High share of emissions - Key sector for climate mitigation
Water & Oceans	Population using at least basic drinking water (% of pop., 2017)	99,40%	Some progress still needed to meet SDG Target 6.1 (100% by 2030)
	Population using at least basic sanitation services (% of pop., 2017)	96,60%	SDG Target 6.2 (100% by 2030) is on track for achievement, but
	Water scarcity (m <sup>3</sup> of renewable freshwater per capita, 2014)	26963 m <sup>3</sup> /cap	Water shortages should be only irregular/local (>1700m <sup>3</sup> /capita)
	Water stress (water withdrawal as % of total available water, 2014)	3,52%	Low water stress (less than 25% of resource extraction)
	Marine protected areas (% of total marine area, 2020)	0,82%	Significant efforts needed to achieve CBD Target of 10% by 2020
	Fish stocks overexploited or collapsed (% of fish stocks, 2014)	36,27%	SDG Target 14.4 (0% by 2020) not met, significant efforts needed

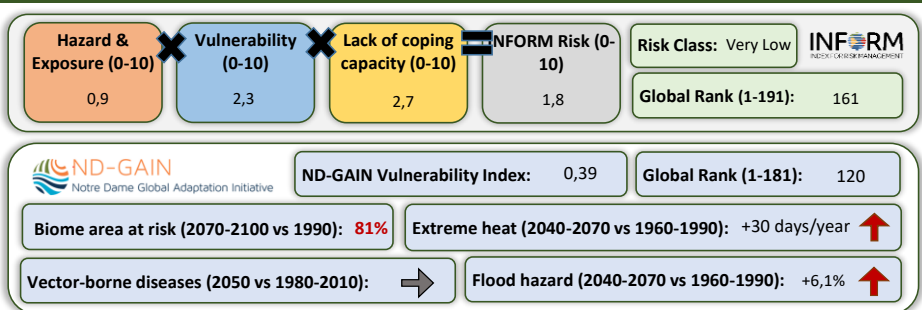
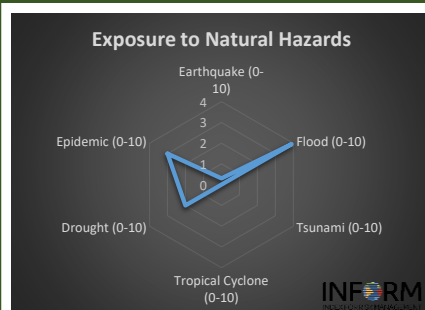
## Greenhouse Gas Emission History (Production-based)



## Historic Trends of selected indicators per Green Deal Pillar (Base 100)



## Climate Adaptation Needs



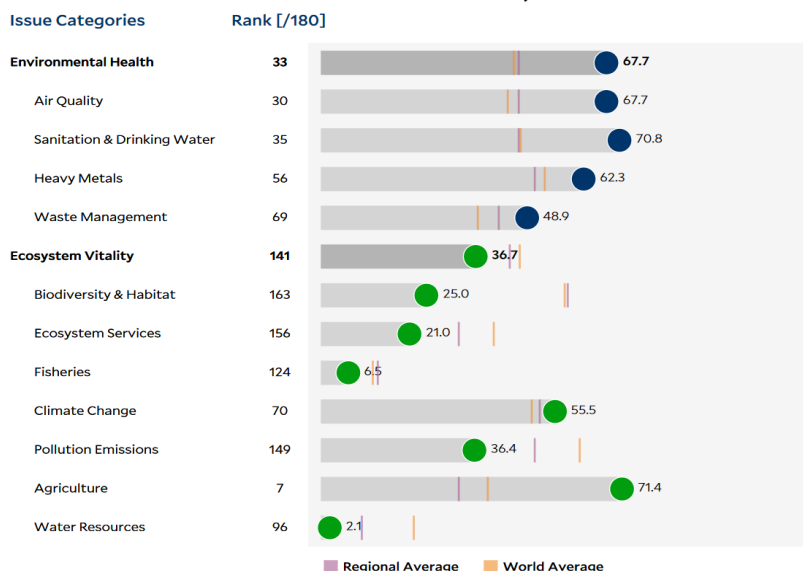
## Environmental Performance Index 2020

2020 EPI Country Rank (out of 180)

61

2020 EPI Score [0=worst, 100=best]

49,1



## SDG Index 2020

(UN SDSN & Bertelsmann Stiftung)

