

## Green Deal Country Fiche

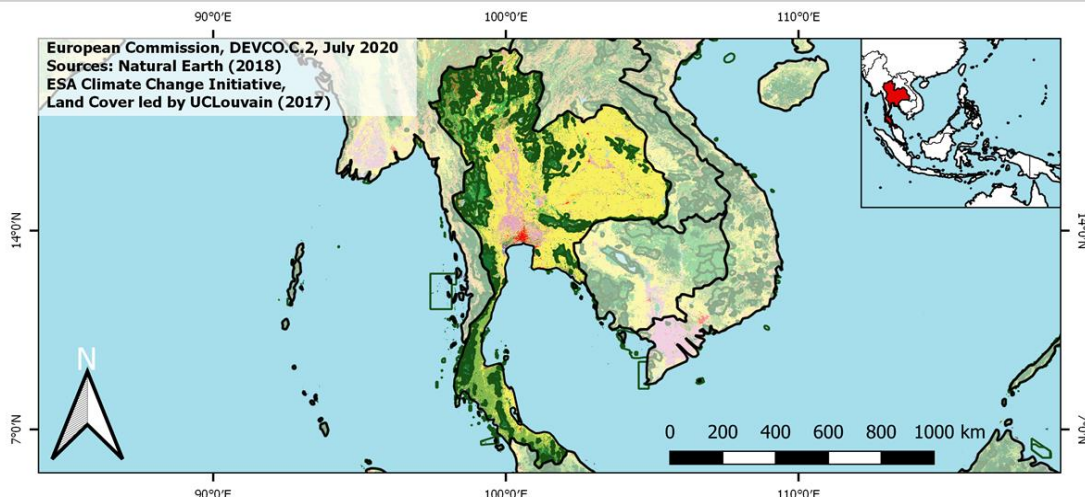
## Thailand

Population in 2019  
69,63 million habitantsProjected population in 2050  
65,94 million habitantsSurface  
513,1 thousands km<sup>2</sup>Population density (2019)  
136 habitants per km<sup>2</sup>GDP per capita  
7.806,74 US\$ (2019)Population living below 1,90 \$/day  
0,00 % in 2018Human Development Index  
0,78 (2019, UN target: >0,8)

## Legend

- ☐ Main Protected Areas  
**Land Cover Classes**  
☐ Cropland rainfed  
☐ Cropland irrigated  
☐ Mosaic crops/nat.veg  
☐ Tropical dense forest  
☐ Deciduous forest  
☐ Coniferous forest  
☐ Mixed forest  
☐ Shrubland  
☐ Grassland  
☐ Sparse vegetation  
☐ Swamp forest  
☐ Mangrove  
☐ Swamps  
☐ Urban areas  
☐ Bare areas  
☐ Water bodies  
☐ Permanent snow and ice

European Commission, DEVCO.C.2, July 2020  
 Sources: Natural Earth (2018)  
 ESA Climate Change Initiative,  
 Land Cover led by UCLouvain (2017)



Share of global  
emissions (2018)  
0,788%

## NDC: Mitigation Summary

(NDC from 2020)

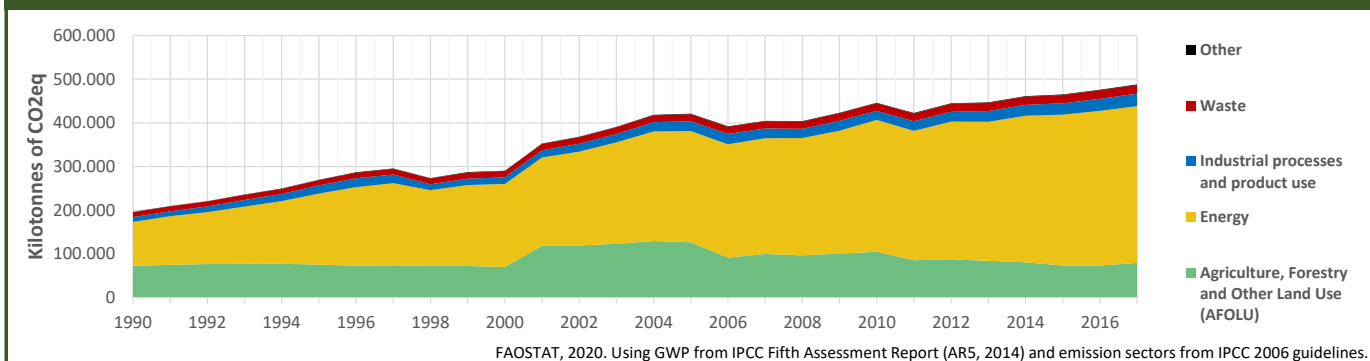
Thailand unconditionally commits to reduce its GHG emissions by 20% by 2030 from the business-as-usual scenario of 555 MtCO<sub>2</sub>eq (excluding LULUCF). Conditionally (in particular regarding cooperation on energy and waste management), this could go up to 25%.

## INTPA "NDC Group"

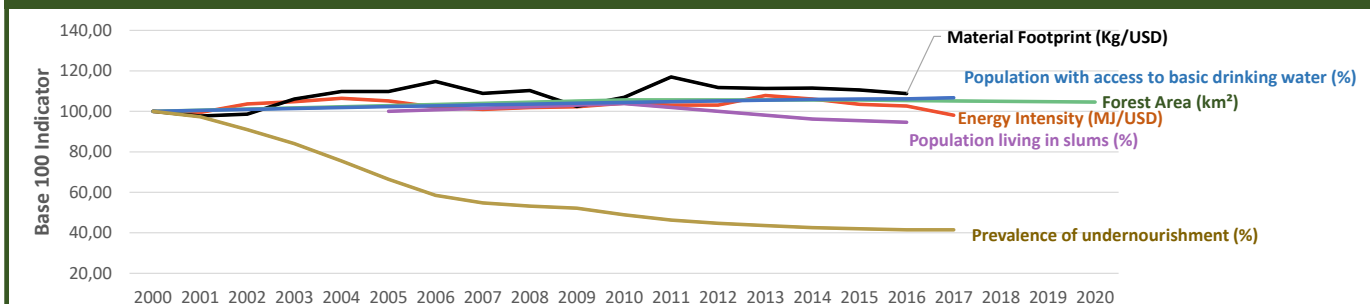
Group 2 - Suggested EU focus on both Mitigation and Adaptation

Pillar	Indicator Name and Unit	Value	Interpretation
Green, circular and low-carbon economy	Ecological footprint (Consumption in global hectares per capita, 2017)	2,58 gh/cap	Above the global sustainable threshold of 1,6 gha per capita
	Recycling and composting rate (% of total solid waste, 2017)	15%	Low recycling and composting rate (overall EU-27 value = 45%)
	Water productivity (USD of GDP per m <sup>3</sup> of water extracted, 2017)	7,21 \$/m <sup>3</sup>	Low water productivity (minimum EU MS value : 10 \$/m <sup>3</sup> )
	Material footprint (Kg of raw materials used per USD of GDP, 2010)	2,44 kg/\$	Larger footprint than all EU-27 Member States
	Sustainable Consumption and Production Policy Framework (2017)	C2	No SCP policy instrument or coordination mechanism reported
	Change in emissions (production) vs change in GDP (2007-2017)	+20% / +73%	Relative decoupling: emissions increased, but slower than GDP
Biodiversity & Forests	Terrestrial protected areas (% of total land area, 2020)	18,78%	CBD Target has been met for terrestrial ecosystems (17% by 2020)
	Threatened species (% of total evaluated species, 2019)	9,82%	High share of threatened species, risk missing SDG target 15.5
	Population around protected areas (% total pop., 10km buffer, 2015)	19,42%	Important share of population - consider landscape approach
	Forest area change (% change between 2015 and 2020)	-0,94 %	SDG Target 15.2 not achieved (halt deforestation by 2020)
	Sustainable forest management (% area with long-term plan, 2020)	NA	No Data
	Employment in forestry (number of full-time equivalents, 2015)	216550 FTE	Medium share of employment (0,5%-1% of total labor force, 2015)
Green and Smart Cities	Proportion of urban population living in slums (% in 2016)	24,60%	Further efforts needed for SDG Target 11.1 (upgrade by 2030)
	Satisfaction with public transport (% satisfied, 2018)	77,04%	High satisfaction with public transport (UN SDSN interpretation)
	Solid waste uncollected or dumped in the open (% of total, 2017)	63%	Significant efforts are needed to meet SDG Target 11.6
	Wastewater receiving primary treatment (% of total)	22,10%	Significant efforts needed to ensure at least full primary treatment
	Urban air pollution (µg/m <sup>3</sup> of PM 2.5 particles, 2016)	26,58 µg/m <sup>3</sup>	Above EU 2020 target (18µg/m <sup>3</sup> ) but below US Standard (35µg/m <sup>3</sup> )
	Alignment of national DRR strategies to Sendai Framework (0-1, 2018)	0,58	Moderate alignment with the Sendai Framework (0,5 to < 0,75)
Sustainable Energy	Access to electricity (% of population, 2018)	100,00%	SDG Target 7.1 has been achieved
	Renewable energy (% of total energy consumption, 2016)	21,84%	Higher share of renewables than the EU 2020 target of 20%
	Renewable electricity (% of electricity production, 2015)	8,54%	Very low share of renewables, low contribution to SDG Target 7.2
	Access to clean cooking (% of total population with access, 2018)	75,50%	Further efforts still needed for universal access to clean cooking
	Fossil fuel subsidies (% of GDP, 2015)	0,00%	No fossil-fuel subsidies, SDG Target 12.C achieved
	Energy Intensity (megajoules per constant 2011 PPP GDP, 2017)	5,13 MJ/\$	Energy Intensity above EU average, but still within range of EU MS
Food systems: from Farms to Forks	Rural poverty (% of rural population below 1\$90 a day, 2018)	NA	No Data
	Food security (% of population in food crisis or worse, 2019)	NA	No Data
	Nutrition (% of children under 5 who are stunted, 2016)	10,50%	Significant efforts needed to meet SDG Target 2.2 of 0% by 2030
	Fertilizer consumption (kg per hectare, 2016)	161,71 kg/ha	Above EU rate (153 kg/ha), but within range of EU MS values
	Land degradation (national area with declining productivity 1999-2013)	13,43%	Significant efforts needed to meet SDG Target 15.3 of 0% by 2030
	Agriculture and FOLU share of emissions (% of CO <sub>2</sub> eq in 2017)	16,32%	Medium share of emissions - Relevant for climate mitigation
Water & Oceans	Population using at least basic drinking water (% of pop., 2017)	99,93%	Some progress still needed to meet SDG Target 6.1 (100% by 2030)
	Population using at least basic sanitation services (% of pop., 2017)	98,80%	SDG Target 6.2 (100% by 2030) is on track for achievement, but
	Water scarcity (m <sup>3</sup> of renewable freshwater per capita, 2014)	3281 m <sup>3</sup> /cap	Water shortages should be only irregular/local (>1700m <sup>3</sup> /capita)
	Water stress (water withdrawal as % of total available water, 2014)	17,49%	Low water stress (less than 25% of resource extraction)
	Marine protected areas (% of total marine area, 2020)	1,92%	Significant efforts needed to achieve CBD Target of 10% by 2020
	Fish stocks overexploited or collapsed (% of fish stocks, 2014)	55,59%	SDG Target 14.4 (0% by 2020) not met, significant efforts needed

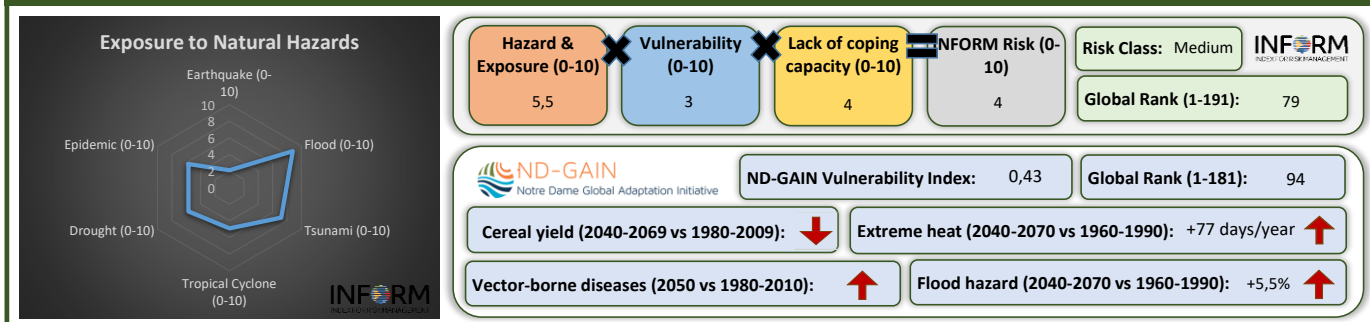
## Greenhouse Gas Emission History (Production-based)



## Historic Trends of selected indicators per Green Deal Pillar (Base 100)



## Climate Adaptation Needs



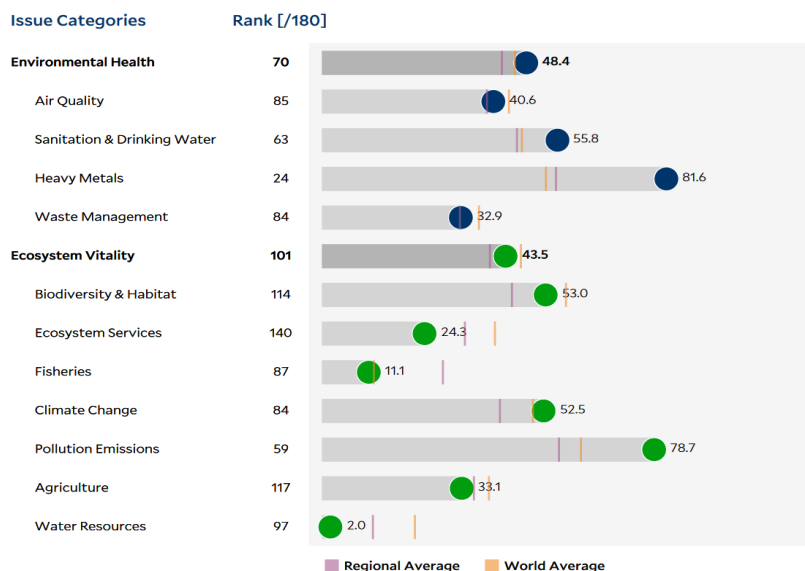
## Environmental Performance Index 2020

2020 EPI Country Rank (out of 180)

78

2020 EPI Score [0=worst, 100=best]

45,4



## SDG Index 2020

(UN SDSN & Bertelsmann Stiftung)



### Legend:

- SDG achieved
- Challenges remain
- Significant challenges remain
- Major challenges remain
- Information unavailable