

Green Deal Country Fiche

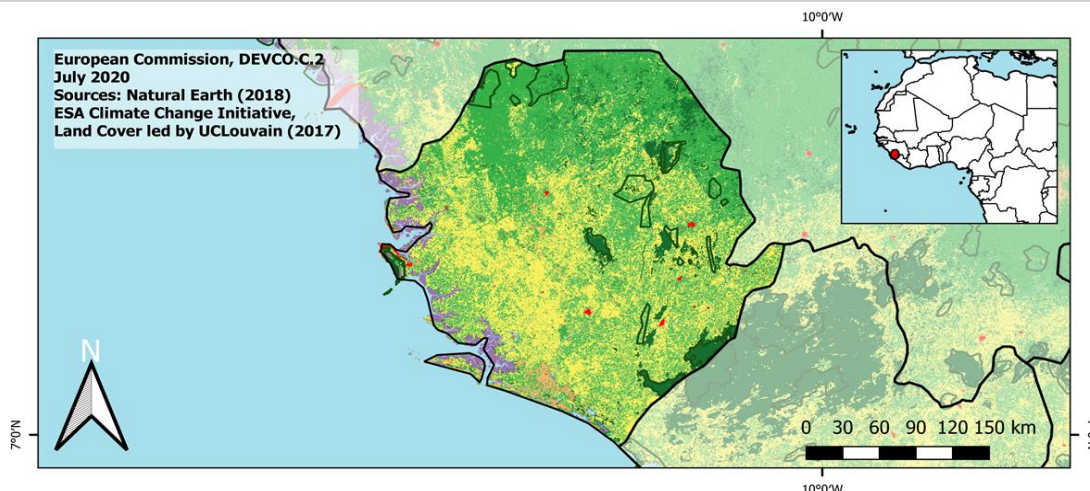
Sierra Leone

Population in 2019
7,81 million habitantsProjected population in 2050
12,95 million habitantsSurface
72,3 thousands km²Population density (2019)
108 habitants per km²GDP per capita
527,53 US\$ (2019)Population living below 1,90 \$/day
43,00 % in 2018Human Development Index
0,45 (2019, UN target: >0,8)

Legend

- ☐ Main Protected Areas
Land Cover Classes
☐ Cropland rainfed
☐ Cropland irrigated
☐ Mosaic crops/nat.veg
☐ Tropical dense forest
☐ Deciduous forest
☐ Coniferous forest
☐ Mixed forest
☐ Shrubland
☐ Grassland
☐ Sparse vegetation
☐ Swamp forest
☐ Mangrove
☐ Swamps
☐ Urban areas
☐ Bare areas
☐ Water bodies
☐ Permanent snow and ice

European Commission, DEVCO.C.2
July 2020
Sources: Natural Earth (2018)
ESA Climate Change Initiative,
Land Cover led by UCLouvain (2017)



Share of global
emissions (2018)
0,003%

NDC: Mitigation Summary

(NDC from 2016)

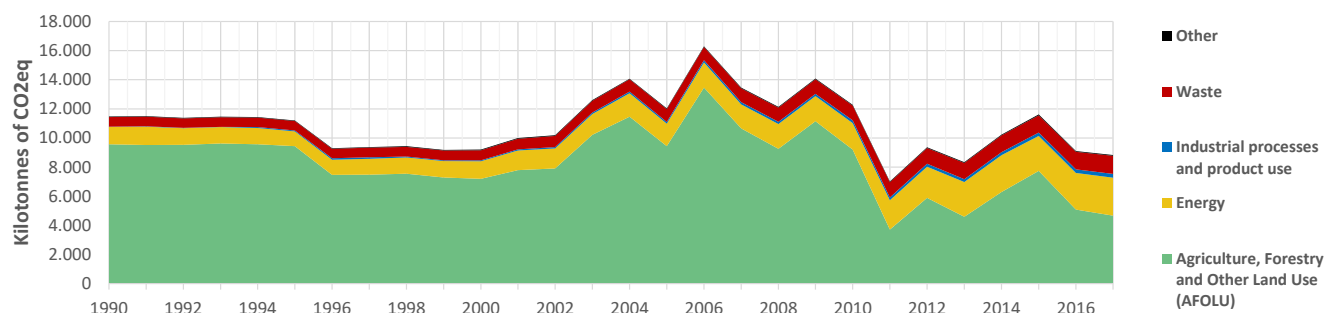
Sierra Leone conditionally aspires to maintain its economy-wide GHG emissions at a level close to 7.58 MtCO₂eq by 2035 or neutral by 2050. Implementing the mitigation actions would cost appr. USD 900 million, targeting energy, industry, AFOLU and waste.

INTPA "NDC Group"

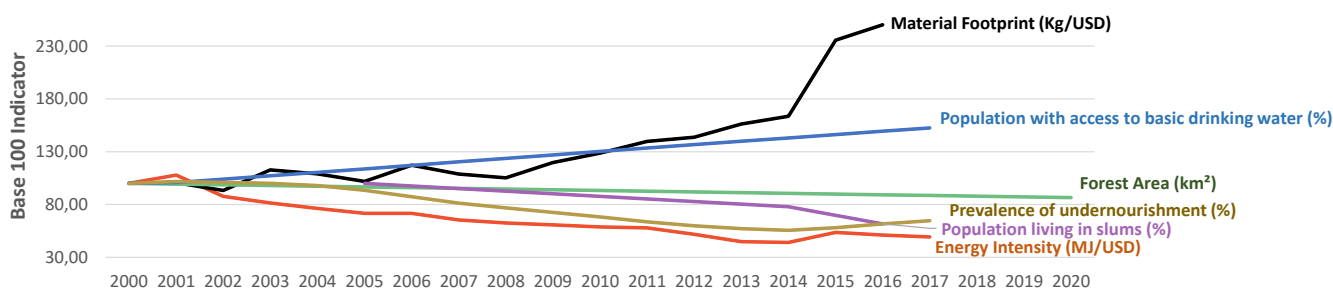
Group 3 - Suggested focus on
adaptation for EU cooperation

Pillar	Indicator Name and Unit	Value	Interpretation
Green, circular and low-carbon economy	Ecological footprint (Consumption in global hectares per capita, 2017)	1 gh/cap	Within the global sustainable threshold of 1,6 gha per capita
	Recycling and composting rate (% of total solid waste, 2017)	NA	No Data
	Water productivity (USD of GDP per m ³ of water extracted, 2014)	11,47 \$/m ³	Less water efficient than EU average, but within range of EU MS
	Material footprint (Kg of raw materials used per USD of GDP, 2010)	12,85 kg/\$	Highly resource-inefficient production and consumption practices
	Sustainable Consumption and Production Policy Framework (2017)	D	No policy framework for SCP has been reported to the UN
	Change in emissions (production) vs change in GDP (2007-2017)	-33% / +73%	Absolute decoupling: emissions have decreased in absolute terms
Biodiversity & Forests	Terrestrial protected areas (% of total land area, 2020)	10,92%	Significant efforts are needed to meet CBD Target of 17% by 2020
	Threatened species (% of total evaluated species, 2019)	8,11%	High share of threatened species, risk missing SDG target 15.5
	Population around protected areas (% total pop., 10km buffer, 2015)	24,22%	Important share of population - consider landscape approach
	Forest area change (% change between 2015 and 2020)	-3,75 %	SDG Target 15.2 not achieved (halt deforestation by 2020)
	Sustainable forest management (% area with long-term plan, 2020)	2,96%	Significant efforts needed to meet SDG Target 15.2 (100% by 2020)
	Employment in forestry (number of full-time equivalents, 2015)	280 FTE	Low share of total employment (<0,5% of total labor force in 2015)
Green and Smart Cities	Proportion of urban population living in slums (% in 2016)	59,80%	Significant efforts needed for SDG Target 11.1 (upgrade by 2030)
	Satisfaction with public transport (% satisfied, 2018)	32,93%	Low satisfaction with public transport (UN SDSN interpretation)
	Solid waste uncollected or dumped in the open (% of total, 2017)	NA	No Data
	Wastewater receiving primary treatment (% of total)	0,00%	Significant efforts needed to ensure at least full primary treatment
	Urban air pollution (µg/m ³ of PM 2.5 particules, 2016)	20,6 µg/m ³	Above EU 2020 target (18µg/m ³) but below US Standard (35µg/m ³)
	Alignment of national DRR strategies to Sendai Framework (0-1 Score)	NA	No Data
Sustainable Energy	Access to electricity (% of population, 2018)	26,10%	Significant efforts needed to meet SDG Target 7.1 of 100% by 2030
	Renewable energy (% of total energy consumption, 2016)	77,63%	High share of renewables in total energy consumption
	Renewable electricity (% of electricity production, 2015)	60,98%	High share of renewable electricity
	Access to clean cooking (% of total population with access, 2018)	<5%	Significant efforts needed for universal access to clean cooking
	Fossil fuel subsidies (% of GDP, 2015)	NA	No Data
	Energy Intensity (megajoules per constant 2011 PPP GDP, 2017)	6,48 MJ/\$	Energy Intensity is above all EU-27 MS values
Food systems: from Farms to Forks	Rural poverty (% of rural population below 1\$90 a day, 2018)	56,60%	Significant efforts needed to achieve SDG Target 1.1 (0% by 2030)
	Food security (% of population in food crisis or worse, 2019)	4,00%	Progress is still needed to meet SDG Target 2.1 of 0% by 2030
	Nutrition (% of children under 5 who are stunted, 2019)	29,50%	Significant efforts needed to meet SDG Target 2.2 of 0% by 2030
	Fertilizer consumption (kg per hectare, 2016)	NA	No Data
	Land degradation (national area with declining productivity 1999-2013)	5,25%	Progress is still needed to meet SDG Target 15.3 of 0% by 2030
	Agriculture and FOLU share of emissions (% of CO ₂ eq in 2017)	52,87%	High share of emissions - Key sector for climate mitigation
Water & Oceans	Population using at least basic drinking water (% of pop., 2017)	60,81%	Further progress needed to meet SDG Target 6.1 (100% by 2030)
	Population using at least basic sanitation services (% of pop., 2017)	15,70%	Significant efforts needed to meet SDG Target 6.2 (100% by 2030)
	Water scarcity (m ³ of renewable freshwater per capita, 2014)	22602 m ³ /cap	Water shortages should be only irregular/local (>1700m ³ /capita)
	Water stress (water withdrawal as % of total available water, 2014)	0,18%	Low water stress (less than 25% of resource extraction)
	Marine protected areas (% of total marine area, 2020)	0,53%	Significant efforts needed to achieve CBD Target of 10% by 2020
	Fish stocks overexploited or collapsed (% of fish stocks, 2014)	2,48%	SDG Target 14.4 of 0% by 2020 not met, progress still needed

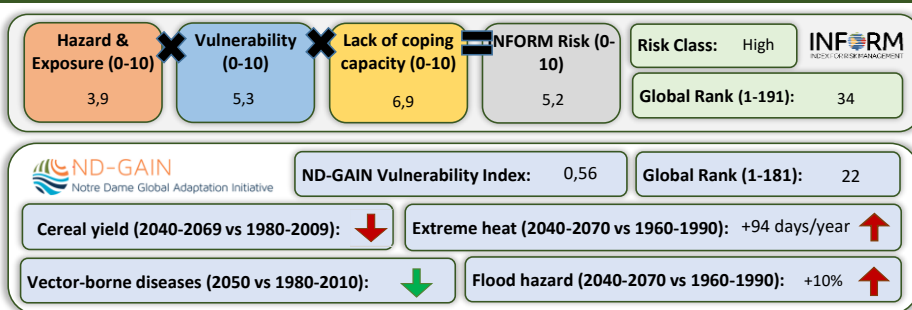
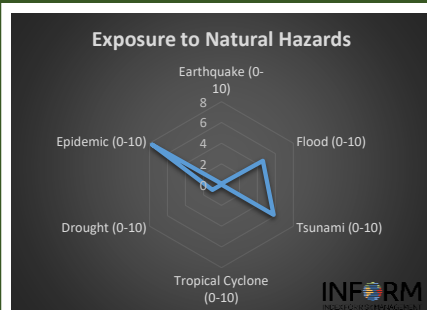
Greenhouse Gas Emission History (Production-based)



Historic Trends of selected indicators per Green Deal Pillar (Base 100)



Climate Adaptation Needs



Environmental Performance Index 2020

2020 EPI Country Rank (out of 180)

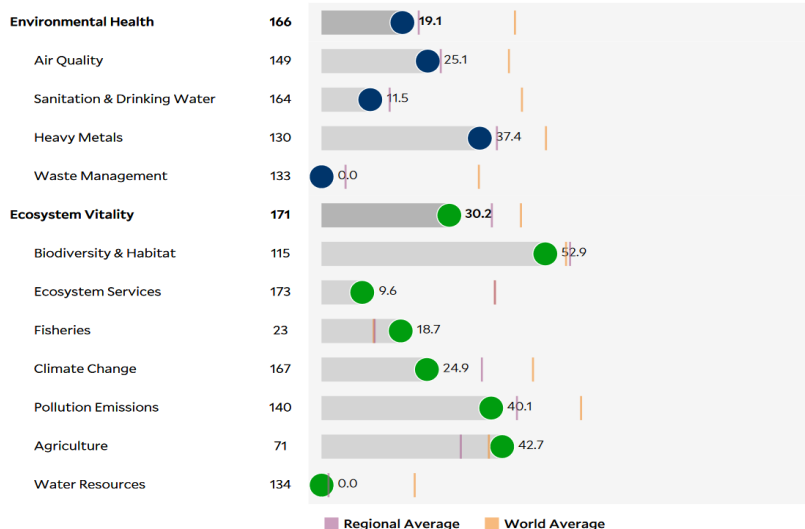
177

2020 EPI Score [0=worst, 100=best]

25,7

Issue Categories

Rank [/180]



SDG Index 2020

(UN SDSN & Bertelsmann Stiftung)



Legend:

- SDG achieved
- Challenges remain
- Significant challenges remain
- Major challenges remain
- Information unavailable