



Green Deal Country Fiche

Samoa

Population in 2019
0,20 million habitants

Projected population in 2050
0,27 million habitants

Surface
2,8 thousands km²

Population density (2019)
70 habitants per km²

GDP per capita
4.324,01 US\$ (2019)

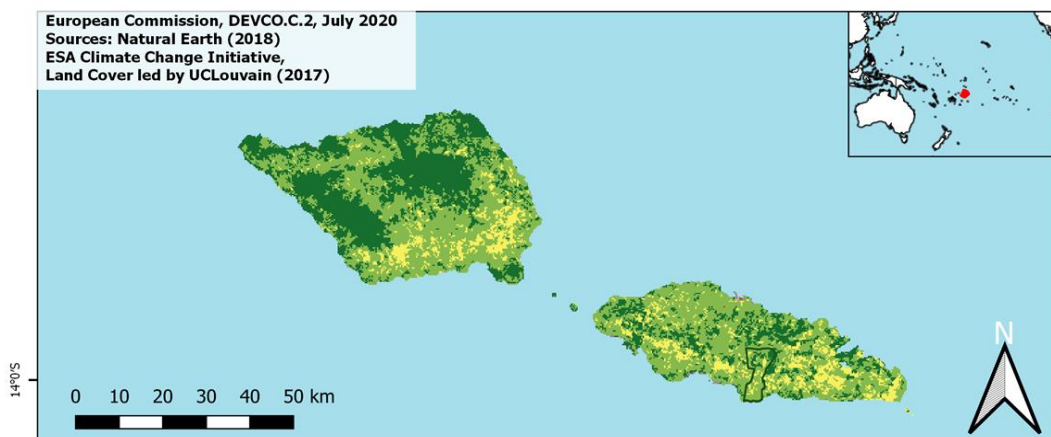
Population living below 1,90 \$/day
1,10 % in 2013

Human Development Index
0,72 (2019, UN target: >0,8)

Legend

- Main Protected Areas
- Land Cover Classes**
- Cropland rainfed
- Cropland irrigated
- Mosaic crops/nat.veg
- Tropical dense forest
- Deciduous forest
- Coniferous forest
- Mixed forest
- Shrubland
- Grassland
- Sparse vegetation
- Swamp forest
- Mangrove
- Swamps
- Urban areas
- Bare areas
- Water bodies
- Permanent snow and ice

European Commission, DEVCO.C.2, July 2020
Sources: Natural Earth (2018)
ESA Climate Change Initiative,
Land Cover led by UCLouvain (2017)



Share of global
emissions (2018)
0,001%

NDC: Mitigation Summary

(NDC from 2016)

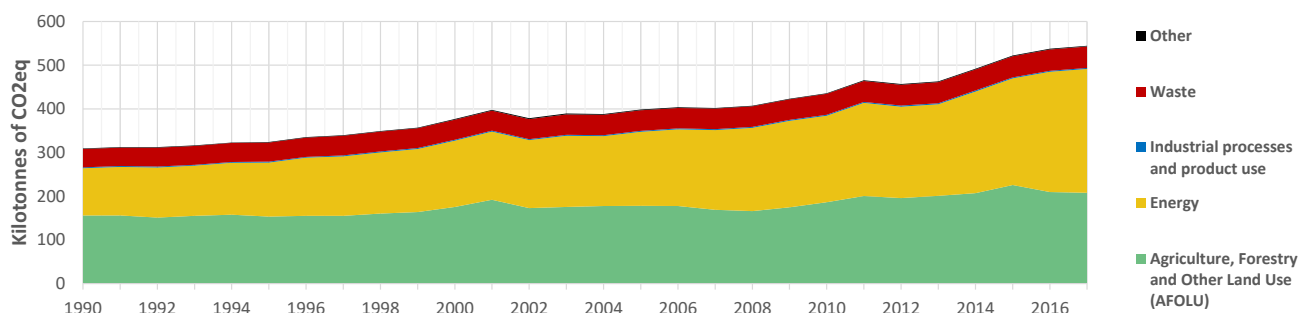
Samoa is committed to reducing its GHG emissions from the Electricity sub sector through the adoption of a 100% renewable energy target for electricity generation through to the year 2025 (conditional).

INTPA "NDC Group"

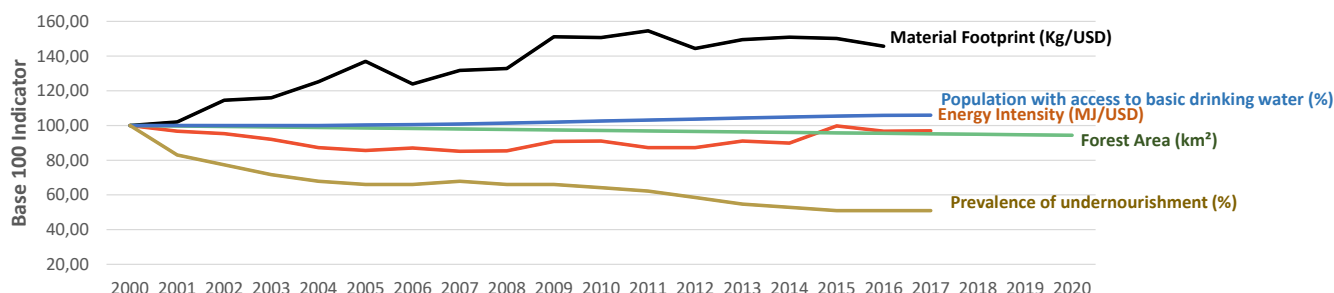
Group 3 - Suggested focus on adaptation for EU cooperation

Pillar	Indicator Name and Unit	Value	Interpretation
Green, circular and low-carbon economy	Ecological footprint (Consumption in global hectares per capita, 2017)	2,52 gh/cap	Above the global sustainable threshold of 1,6 gha per capita
	Recycling and composting rate (% of total solid waste, 2017)	NA	No Data
	Water productivity (USD of GDP per m ³ of water extracted, 2017)	NA	No Data
	Material footprint (Kg of raw materials used per USD of GDP, 2010)	2,1 kg/\$	Larger footprint than EU average (0,97), but within range of EU MS
	Sustainable Consumption and Production Policy Framework (2017)	D	No policy framework for SCP has been reported to the UN
	Change in emissions (production) vs change in GDP (2007-2017)	+38% / +46%	Relative decoupling: emissions increased, but slower than GDP
Biodiversity & Forests	Terrestrial protected areas (% of total land area, 2020)	8,22%	Significant efforts are needed to meet CBD Target of 17% by 2020
	Threatened species (% of total evaluated species, 2019)	6,10%	Medium share of threatened species, risk missing SDG target 15.5
	Population around protected areas (% total pop., 10km buffer, 2015)	80,24%	Very significant share of population - Landscape approach is key
	Forest area change (% change between 2015 and 2020)	-1,46 %	SDG Target 15.2 not achieved (halt deforestation by 2020)
	Sustainable forest management (% area with long-term plan, 2020)	NA	No Data
	Employment in forestry (number of full-time equivalents, 2015)	100 FTE	Low share of total employment (<0,5% of total labor force in 2015)
Green and Smart Cities	Proportion of urban population living in slums (% in 2016)	NA	No Data
	Satisfaction with public transport (% satisfied, 2018)	NA	No Data
	Solid waste uncollected or dumped in the open (% of total, 2017)	15-40%	Further efforts are needed to meet SDG Target 11.6
	Wastewater receiving primary treatment (% of total)	4,79%	Significant efforts needed to ensure at least full primary treatment
	Urban air pollution (µg/m ³ of PM 2.5 particules, 2016)	10,88 µg/m ³	Within EU 2020 target (18µg/m ³), above WHO guideline (10µg/m ³)
	Alignment of national DRR strategies to Sendai Framework (0-1, 2018)	0,70	Moderate alignment with the Sendai Framework (0,5 to < 0,75)
Sustainable Energy	Access to electricity (% of population, 2018)	100,00%	SDG Target 7.1 has been achieved
	Renewable energy (% of total energy consumption, 2016)	27,30%	Higher share of renewables than the EU 2020 target of 20%
	Renewable electricity (% of electricity production, 2015)	30,35%	Medium share of renewable electricity
	Access to clean cooking (% of total population with access, 2016)	32,29%	Significant efforts needed for universal access to clean cooking
	Fossil fuel subsidies (% of GDP, 2015)	NA	No Data
	Energy Intensity (megajoules per constant 2011 PPP GDP, 2017)	4,11 MJ/\$	Energy Intensity above EU average, but still within range of EU MS
Food systems: from Farms to Forks	Rural poverty (% of rural population below 1\$90 a day, 2018)	NA	No Data
	Food security (% of population in food crisis or worse, 2019)	NA	No Data
	Nutrition (% of children under 5 who are stunted, 2014)	4,90%	Progress is still needed to meet SDG Target 2.2 of 0% by 2030
	Fertilizer consumption (kg per hectare, 2016)	4,64 kg/ha	Below lowest EU MS value (60 kg/ha in Romania)
	Land degradation (national area with declining productivity 1999-2013)	0,00%	SDG Target 15.3 has been achieved
	Agriculture and FOLU share of emissions (% of CO2eq in 2017)	38,20%	Medium share of emissions - Relevant for climate mitigation
Water & Oceans	Population using at least basic drinking water (% of pop., 2017)	97,38%	Some progress still needed to meet SDG Target 6.1 (100% by 2030)
	Population using at least basic sanitation services (% of pop., 2017)	98,20%	SDG Target 6.2 (100% by 2030) is on track for achievement, but
	Water scarcity (m ³ of renewable freshwater per capita, 2014)	NA	No Data
	Water stress (water withdrawal as % of total available water, 2014)	NA	No Data
	Marine protected areas (% of total marine area, 2020)	0,14%	Significant efforts needed to achieve CBD Target of 10% by 2020
	Fish stocks overexploited or collapsed (% of fish stocks, 2014)	No Data	No Data

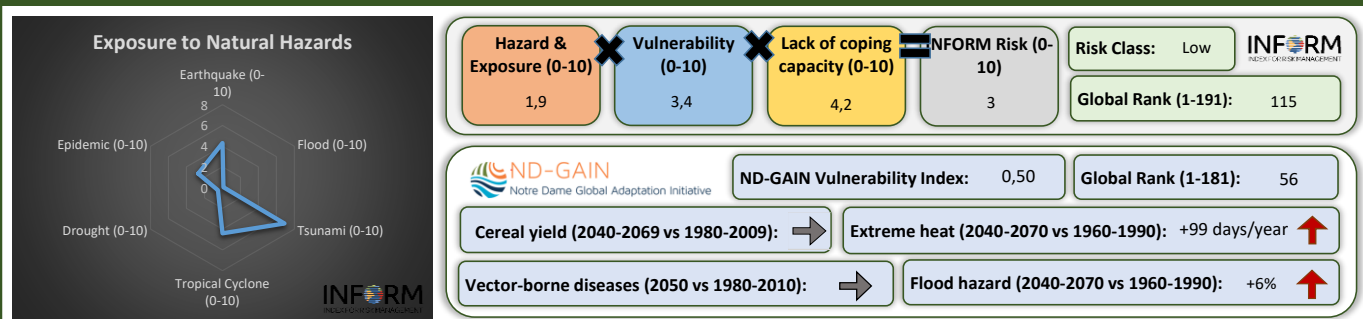
Greenhouse Gas Emission History (Production-based)



Historic Trends of selected indicators per Green Deal Pillar (Base 100)



Climate Adaptation Needs



Environmental Performance Index 2020

2020 EPI Country Rank (out of 180)

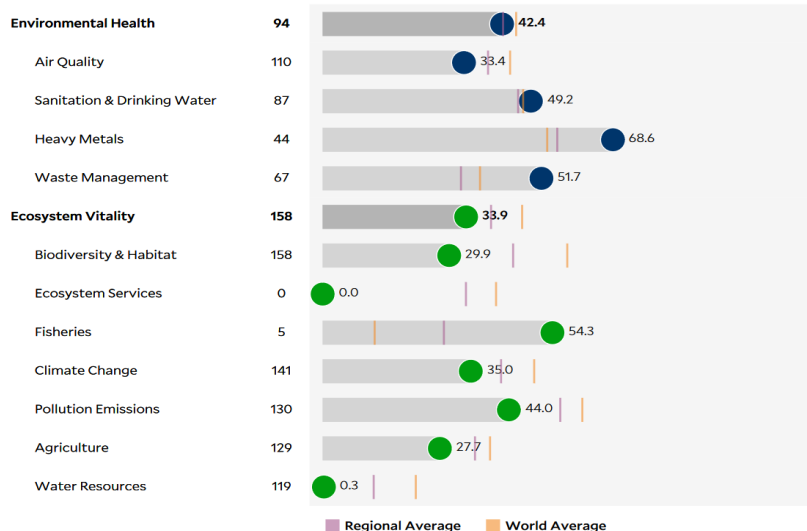
120

2020 EPI Score [0=worst, 100=best]

37,3

Issue Categories

Rank [/180]



SDG Index 2020

(UN SDSN & Bertelsmann Stiftung)



Legend:

- SDG achieved
- Challenges remain
- Significant challenges remain
- Major challenges remain
- Information unavailable