



Green Deal Country Fiche

Paraguay

Population in 2019
7,04 million habitants

Projected population in 2050
9,10 million habitants

Surface
406,8 thousands km²

Population density (2019)
17 habitants per km²

GDP per capita
5.414,80 US\$ (2019)

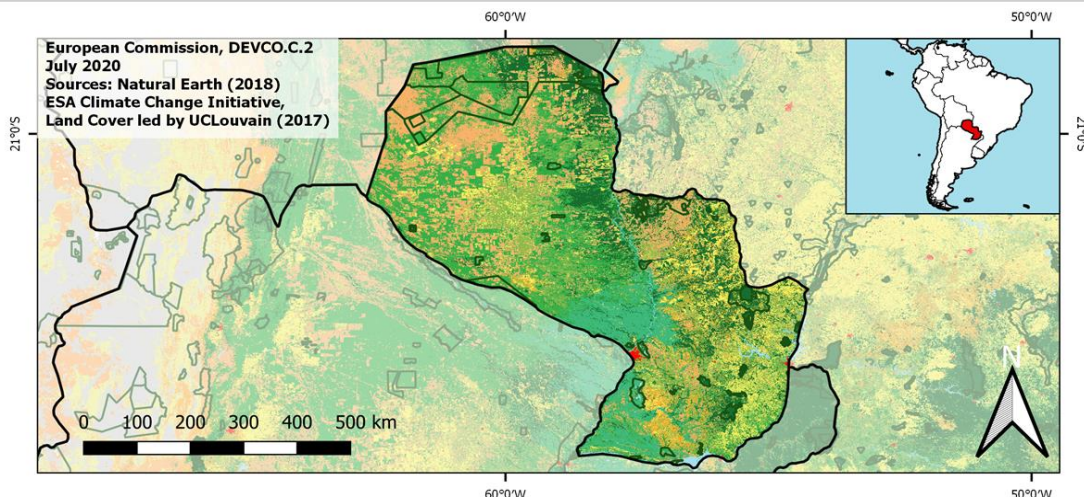
Population living below 1,90 \$/day
1,40 % in 2018

Human Development Index
0,73 (2019, UN target: >0,8)

Legend

- Main Protected Areas
- Land Cover Classes**
 - Cropland rainfed
 - Cropland irrigated
 - Mosaic crops/nat.veg
 - Tropical dense forest
 - Deciduous forest
 - Coniferous forest
 - Mixed forest
 - Shrubland
 - Grassland
 - Sparse vegetation
 - Swamp forest
 - Mangrove
 - Swamps
 - Urban areas
 - Bare areas
 - Water bodies
 - Permanent snow and ice

European Commission, DEVCO.C.2
July 2020
Sources: Natural Earth (2018)
ESA Climate Change Initiative,
Land Cover led by UCLouvain (2017)



Share of global
emissions (2018)
0,020%

NDC: Mitigation Summary

(NDC from 2016)

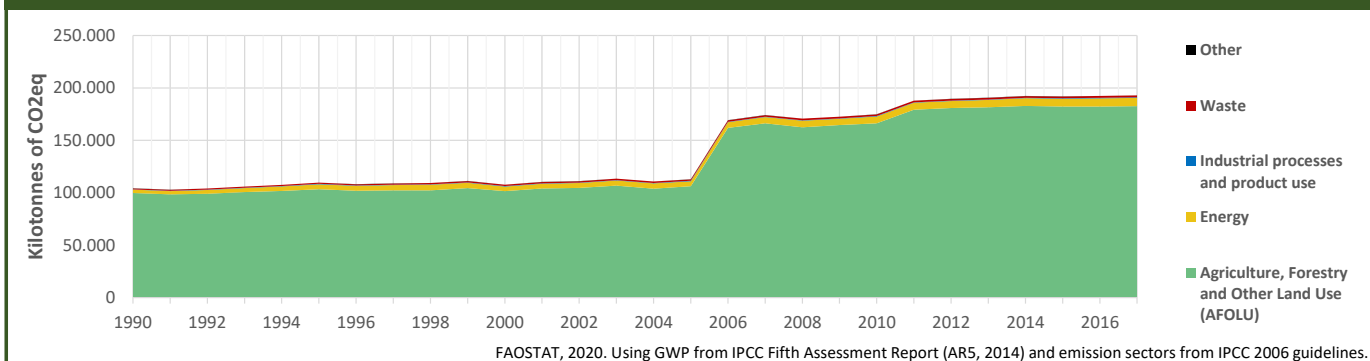
Paraguay aims a GHG emission reduction of 20% by 2030 relative to business-as-usual (10% conditional and 10% unconditional).

INTPA "NDC Group"

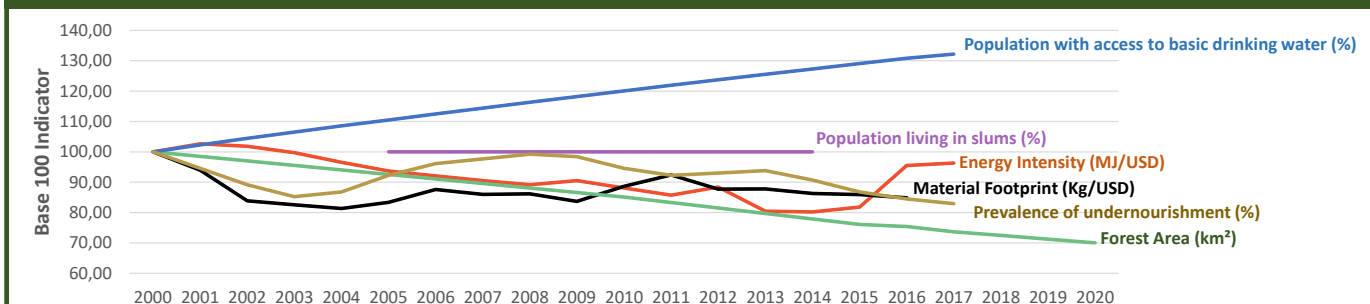
Group 3 - Suggested focus on
adaptation for EU cooperation

Pillar	Indicator Name and Unit	Value	Interpretation
Green, circular and low-carbon economy	Ecological footprint (Consumption in global hectares per capita, 2017)	3,09 gh/cap	Above the global sustainable threshold of 1,6 gha per capita
	Recycling and composting rate (% of total solid waste, 2017)	<5%	No or very low rate of recycling and composting (min EU MS = 7%)
	Water productivity (USD of GDP per m ³ of water extracted, 2017)	9,05 \$/m ³	Low water productivity (minimum EU MS value : 10 \$/m ³)
	Material footprint (Kg of raw materials used per USD of GDP, 2010)	2,7 kg/\$	Larger footprint than all EU-27 Member States
	Sustainable Consumption and Production Policy Framework (2017)	D	No policy framework for SCP has been reported to the UN
	Change in emissions (production) vs change in GDP (2007-2017)	+15% / +118%	Relative decoupling: emissions increased, but slower than GDP
Biodiversity & Forests	Terrestrial protected areas (% of total land area, 2020)	14,34%	Further progress is needed to meet CBD Target of 17% by 2020
	Threatened species (% of total evaluated species, 2019)	3,82%	Further conservation efforts needed to secure SDG Target 15.5
	Population around protected areas (% total pop., 10km buffer, 2015)	58,73%	Very significant share of population - Landscape approach is key
	Forest area change (% change between 2015 and 2020)	-7,98 %	SDG Target 15.2 not achieved (halt deforestation by 2020)
	Sustainable forest management (% area with long-term plan, 2020)	NA	No Data
	Employment in forestry (number of full-time equivalents, 2015)	NA	No Data
Green and Smart Cities	Proportion of urban population living in slums (% in 2016)	17,60%	Further efforts needed for SDG Target 11.1 (upgrade by 2030)
	Satisfaction with public transport (% satisfied, 2018)	48,45%	Medium satisfaction (UN SDSN interpretation)
	Solid waste uncollected or dumped in the open (% of total, 2017)	61%	Significant efforts are needed to meet SDG Target 11.6
	Wastewater receiving primary treatment (% of total)	5,00%	Significant efforts needed to ensure at least full primary treatment
	Urban air pollution (µg/m ³ of PM 2.5 particules, 2016)	11,69 µg/m ³	Within EU 2020 target (18µg/m ³), above WHO guideline (10µg/m ³)
	Alignment of national DRR strategies to Sendai Framework (0-1, 2018)	0,60	Moderate alignment with the Sendai Framework (0,5 to < 0,75)
Sustainable Energy	Access to electricity (% of population, 2018)	100,00%	SDG Target 7.1 has been achieved
	Renewable energy (% of total energy consumption, 2016)	59,38%	High share of renewables in total energy consumption
	Renewable electricity (% of electricity production, 2015)	100,00%	High share of renewable electricity
	Access to clean cooking (% of total population with access, 2018)	68,70%	Further efforts still needed for universal access to clean cooking
	Fossil fuel subsidies (% of GDP, 2015)	0,09%	Within the range of subsidy shares from EU-27 MS
	Energy Intensity (megajoules per constant 2011 PPP GDP, 2017)	3,65 MJ/\$	Energy Intensity within range of EU-MS, below the EU-27 average
Food systems: from Farms to Forks	Rural poverty (% of rural population below \$90 a day, 2018)	3,50%	Some efforts needed to achieve SDG Target 1.1 (0% by 2030)
	Food security (% of population in food crisis or worse, 2019)	NA	No Data
	Nutrition (% of children under 5 who are stunted, 2016)	5,60%	Progress is still needed to meet SDG Target 2.2 of 0% by 2030
	Fertilizer consumption (kg per hectare, 2016)	110,35 kg/ha	Within range of EU MS values (below EU overall use of 153 kg/ha)
	Land degradation (national area with declining productivity 1999-2013)	48,56%	Significant efforts needed to meet SDG Target 15.3 of 0% by 2030
	Agriculture and FOLU share of emissions (% of CO ₂ eq in 2017)	94,69%	High share of emissions - Key sector for climate mitigation
Water & Oceans	Population using at least basic drinking water (% of pop., 2017)	99,61%	Some progress still needed to meet SDG Target 6.1 (100% by 2030)
	Population using at least basic sanitation services (% of pop., 2017)	89,80%	Further progress needed to meet SDG Target 6.2 (100% by 2030)
	Water scarcity (m ³ of renewable freshwater per capita, 2014)	17856 m ³ /cap	Water shortages should be only irregular/local (>1700m ³ /capita)
	Water stress (water withdrawal as % of total available water, 2014)	0,93%	Low water stress (less than 25% of resource extraction)
	Marine protected areas (% of total marine area, 2020)	Landlocked	Indicator not relevant because the country is landlocked
	Fish stocks overexploited or collapsed (% of fish stocks, 2014)	Landlocked	Indicator not relevant because the country is landlocked

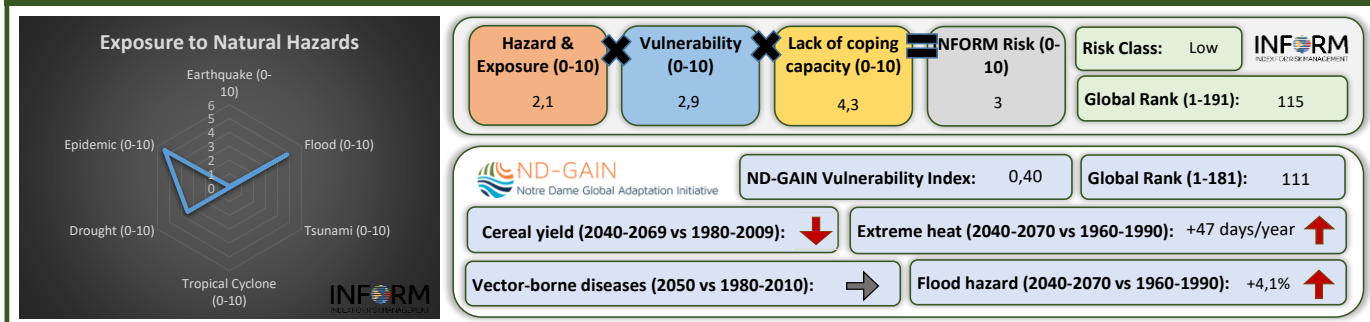
Greenhouse Gas Emission History (Production-based)



Historic Trends of selected indicators per Green Deal Pillar (Base 100)



Climate Adaptation Needs



Environmental Performance Index 2020

2020 EPI Country Rank (out of 180)

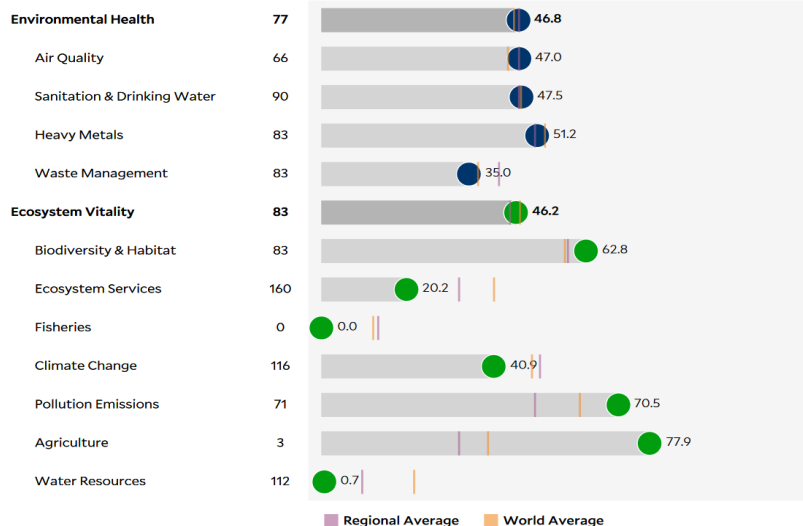
73

2020 EPI Score [0=worst, 100=best]

46,4

Issue Categories

Rank [/180]



SDG Index 2020

(UN SDSN & Bertelsmann Stiftung)



Legend:

- SDG achieved
- Challenges remain
- Significant challenges remain
- Major challenges remain
- Information unavailable