

Green Deal Country Fiche

Nigeria

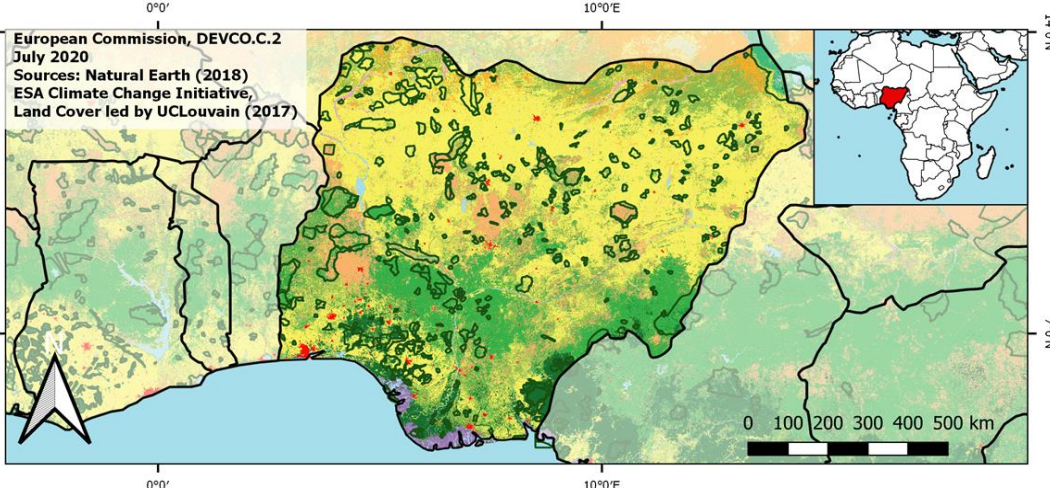
Population in 2019
200,96 million habitantsProjected population in 2050
401,32 million habitantsSurface
923,8 thousands km²Population density (2019)
218 habitants per km²GDP per capita
2.229,86 US\$ (2019)Population living below 1,90 \$/day
39,10 % in 2018Human Development Index
0,54 (2019, UN target: >0,8)

Legend

Main Protected Areas

Land Cover Classes

- Cropland rainfed
- Cropland irrigated
- Mosaic crops/nat.veg
- Tropical dense forest
- Deciduous forest
- Coniferous forest
- Mixed forest
- Shrubland
- Grassland
- Sparse vegetation
- Swamp forest
- Mangrove
- Swamps
- Urban areas
- Bare areas
- Water bodies
- Permanent snow and ice

Share of global
emissions (2018)
0,348%

NDC: Mitigation Summary

(NDC from 2017)

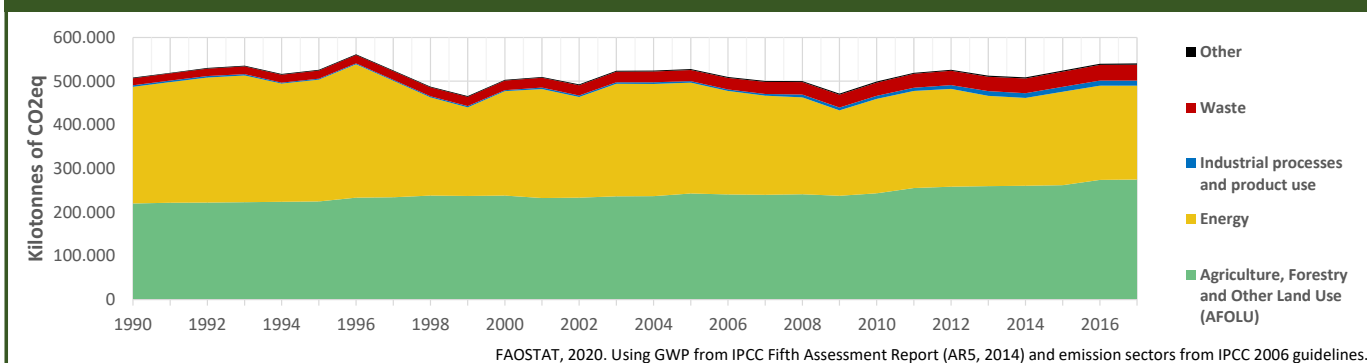
Nigeria unconditionally commits to reduce its GHG emissions by 20% by 2030 below BAU of 900 MtCO₂eq. Conditionally, this could go up to 45%. Key measures focus on energy access, energy efficiency and significantly reducing the use of diesel generators.

INTPA "NDC Group"

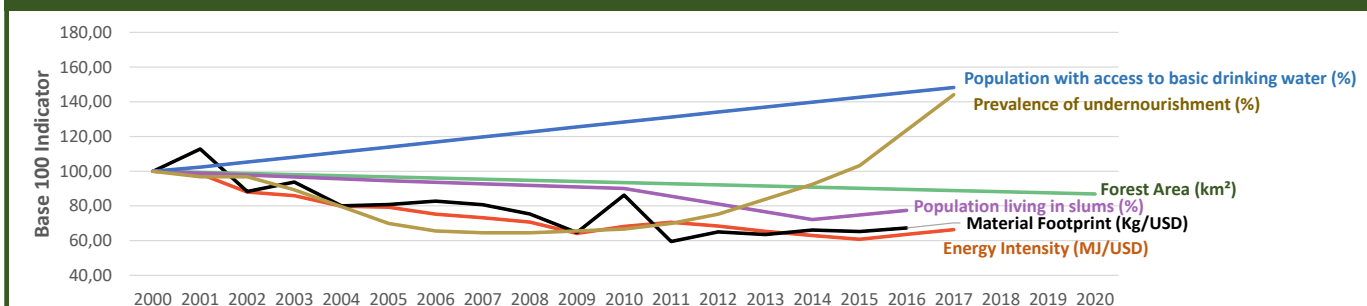
Group 2 - Suggested EU focus on both Mitigation and Adaptation

Pillar	Indicator Name and Unit	Value	Interpretation
Green, circular and low-carbon economy	Ecological footprint (Consumption in global hectares per capita, 2017)	1,02 gh/cap	Within the global sustainable threshold of 1,6 gha per capita
	Recycling and composting rate (% of total solid waste, 2017)	<5%	No or very low rate of recycling and composting (min EU MS = 7%)
	Water productivity (USD of GDP per m ³ of water extracted, 2014)	30,53 \$/m ³	Less water efficient than EU average, but within range of EU MS
	Material footprint (Kg of raw materials used per USD of GDP, 2010)	0,98 kg/\$	Larger footprint than EU average (0,97), but within range of EU MS
	Sustainable Consumption and Production Policy Framework (2017)	D	No policy framework for SCP has been reported to the UN
	Change in emissions (production) vs change in GDP (2007-2017)	+10% / +36%	Relative decoupling: emissions increased, but slower than GDP
Biodiversity & Forests	Terrestrial protected areas (% of total land area, 2020)	13,90%	Further progress is needed to meet CBD Target of 17% by 2020
	Threatened species (% of total evaluated species, 2019)	8,92%	High share of threatened species, risk missing SDG target 15.5
	Population around protected areas (% total pop., 10km buffer, 2015)	45,23%	Very significant share of population - Landscape approach is key
	Forest area change (% change between 2015 and 2020)	-3,64 %	SDG Target 15.2 not achieved (halt deforestation by 2020)
	Sustainable forest management (% area with long-term plan, 2020)	11,29%	Significant efforts needed to meet SDG Target 15.2 (100% by 2020)
	Employment in forestry (number of full-time equivalents, 2015)	20000 FTE	Low share of total employment (<0,5% of total labor force in 2015)
Green and Smart Cities	Proportion of urban population living in slums (% in 2016)	53,90%	Significant efforts needed for SDG Target 11.1 (upgrade by 2030)
	Satisfaction with public transport (% satisfied, 2018)	64,85%	Medium satisfaction (UN SDSN interpretation)
	Solid waste uncollected or dumped in the open (% of total, 2017)	76%	Significant efforts are needed to meet SDG Target 11.6
	Wastewater receiving primary treatment (% of total)	2,00%	Significant efforts needed to ensure at least full primary treatment
	Urban air pollution (µg/m ³ of PM 2.5 particles, 2016)	46,28 µg/m ³	Very high air pollution, above key guideline values (WHO, EU, US)
	Alignment of national DRR strategies to Sendai Framework (0-1 Score)	NA	No Data
Sustainable Energy	Access to electricity (% of population, 2018)	56,50%	Significant efforts needed to meet SDG Target 7.1 of 100% by 2030
	Renewable energy (% of total energy consumption, 2016)	82,40%	High share of renewables in total energy consumption
	Renewable electricity (% of electricity production, 2015)	18,20%	Low share, increases needed to contribute to SDG Target 7.2
	Access to clean cooking (% of total population with access, 2018)	9,20%	Significant efforts needed for universal access to clean cooking
	Fossil fuel subsidies (% of GDP, 2015)	0,14%	Within the range of subsidy shares from EU-27 MS
	Energy Intensity (megajoules per constant 2011 PPP GDP, 2017)	6,44 MJ/\$	Energy Intensity is above all EU-27 MS values
Food systems: from Farms to Forks	Rural poverty (% of rural population below \$190 a day, 2018)	NA	No Data
	Food security (% of population in food crisis or worse, 2019)	5,00%	Progress is still needed to meet SDG Target 2.1 of 0% by 2030
	Nutrition (% of children under 5 who are stunted, 2018)	36,80%	Significant efforts needed to meet SDG Target 2.2 of 0% by 2030
	Fertilizer consumption (kg per hectare, 2016)	5,47 kg/ha	Below lowest EU MS value (60 kg/ha in Romania)
	Land degradation (national area with declining productivity 1999-2013)	26,06%	Significant efforts needed to meet SDG Target 15.3 of 0% by 2030
	Agriculture and FOLU share of emissions (% of CO ₂ eq in 2017)	50,82%	High share of emissions - Key sector for climate mitigation
Water & Oceans	Population using at least basic drinking water (% of pop., 2017)	71,38%	Further progress needed to meet SDG Target 6.1 (100% by 2030)
	Population using at least basic sanitation services (% of pop., 2017)	39,20%	Significant efforts needed to meet SDG Target 6.2 (100% by 2030)
	Water scarcity (m ³ of renewable freshwater per capita, 2014)	1252 m ³ /cap	Water shortages may appear regularly
	Water stress (water withdrawal as % of total available water, 2014)	5,83%	Low water stress (less than 25% of resource extraction)
	Marine protected areas (% of total marine area, 2020)	0,02%	Significant efforts needed to achieve CBD Target of 10% by 2020
	Fish stocks overexploited or collapsed (% of fish stocks, 2014)	14,19%	SDG Target 14.4 of 0% by 2020 not met, progress still needed

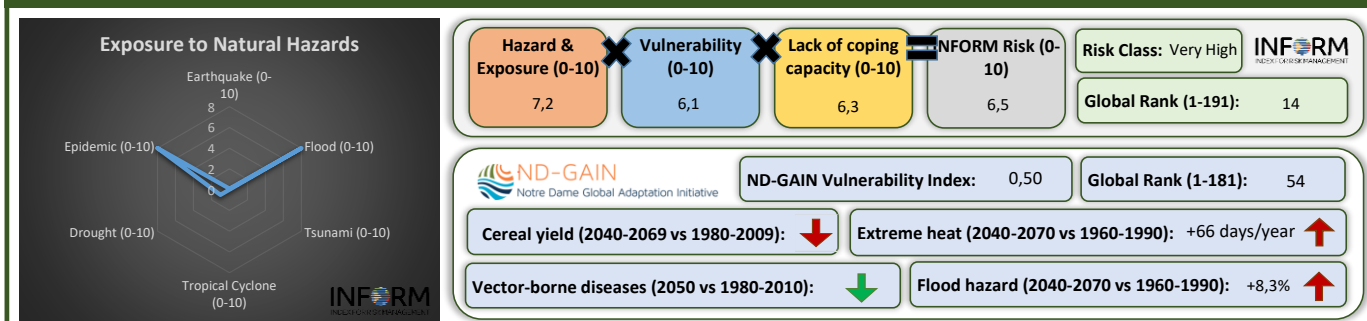
Greenhouse Gas Emission History (Production-based)



Historic Trends of selected indicators per Green Deal Pillar (Base 100)



Climate Adaptation Needs



Environmental Performance Index 2020

2020 EPI Country Rank (out of 180)

151

2020 EPI Score [0=worst, 100=best]

31,0



SDG Index 2020

(UN SDSN & Bertelsmann Stiftung)

