



## Green Deal Country Fiche

Niger

Population in 2019  
23,31 million habitants

Projected population in 2050  
65,59 million habitants

Surface  
1.267,0 thousands km<sup>2</sup>

Population density (2019)  
18 habitants per km<sup>2</sup>

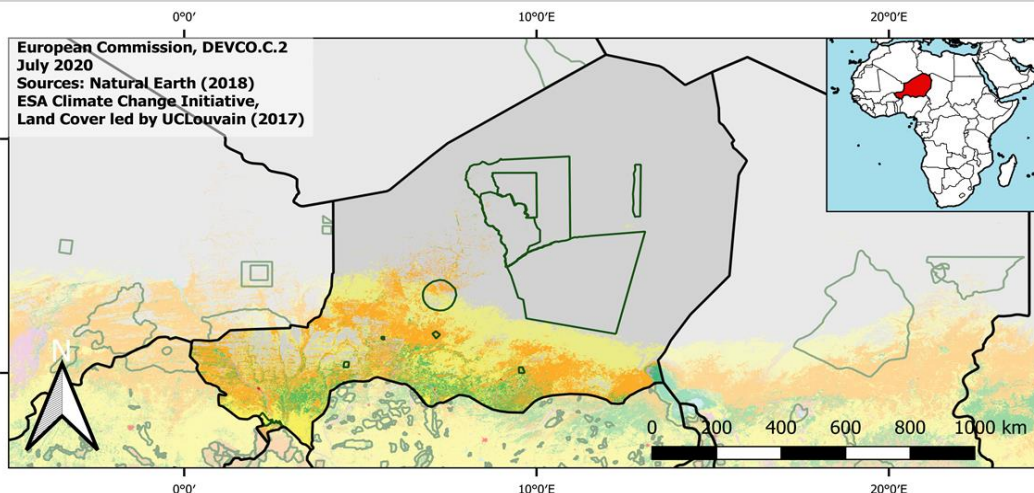
GDP per capita  
553,90 US\$ (2019)

Population living below 1,90 \$/day  
45,40 % in 2014

Human Development Index  
0,39 (2019, UN target: >0,8)

### Legend

- Main Protected Areas
- Land Cover Classes**
- Cropland rainfed
- Cropland irrigated
- Mosaic crops/nat.veg
- Tropical dense forest
- Deciduous forest
- Coniferous forest
- Mixed forest
- Shrubland
- Grassland
- Sparse vegetation
- Swamp forest
- Mangrove
- Swamps
- Urban areas
- Bare areas
- Water bodies
- Permanent snow and ice



Share of global  
emissions (2018)  
0,006%

### NDC: Mitigation Summary

(NDC from 2016)

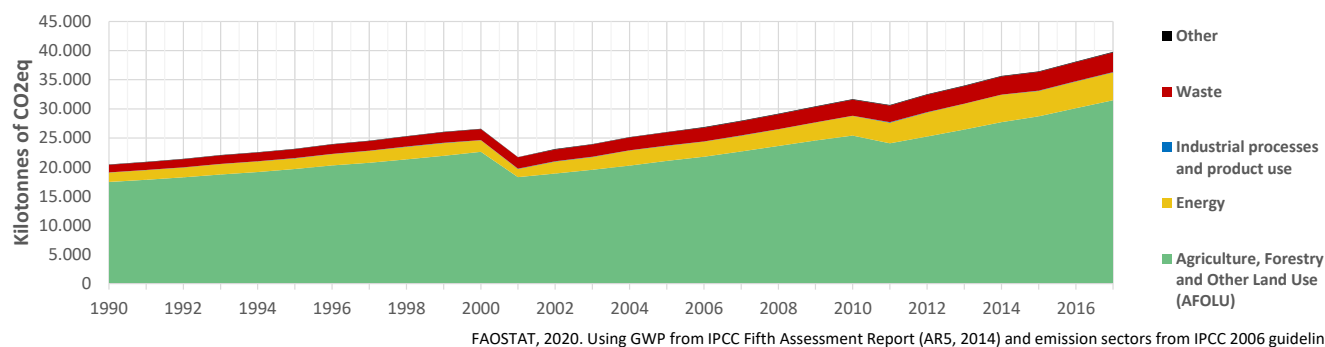
Niger unconditionally commits to reduce its GHG emissions by 3.5% by 2030 compared to BAU. Conditionally, this could go up to 34.6% (or 33.4 MtCO<sub>2</sub>eq). Actions focus on AFOLU (Agriculture, Forestry and Other Land Use) and energy.

### INTPA "NDC Group"

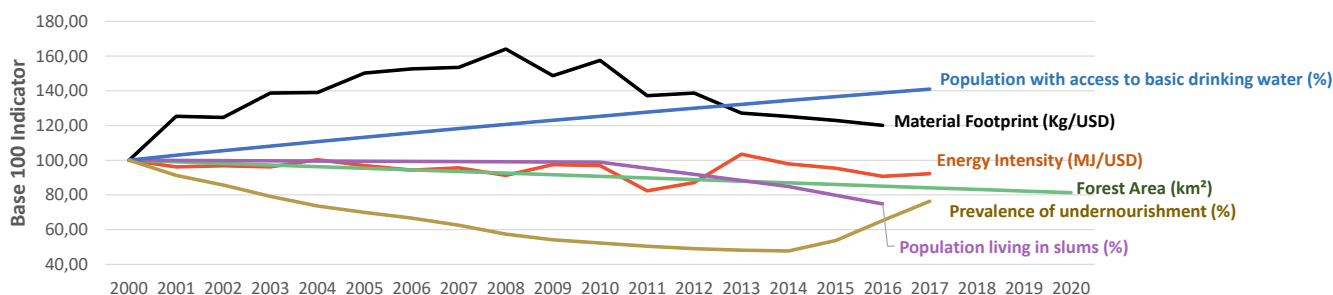
Group 3 - Suggested focus on adaptation for EU cooperation

Pillar	Indicator Name and Unit	Value	Interpretation
Green, circular and low-carbon economy	Ecological footprint (Consumption in global hectares per capita, 2017)	1,56 gh/cap	Within the global sustainable threshold of 1,6 gha per capita
	Recycling and composting rate (% of total solid waste, 2017)	<5%	No or very low rate of recycling and composting (min EU MS = 7%)
	Water productivity (USD of GDP per m <sup>3</sup> of water extracted, 2017)	2,5 \$/m <sup>3</sup>	Highly inefficient use of water resources
	Material footprint (Kg of raw materials used per USD of GDP, 2010)	7,71 kg/\$	Highly resource-inefficient production and consumption practices
	Sustainable Consumption and Production Policy Framework (2017)	D	No policy framework for SCP has been reported to the UN
	Change in emissions (production) vs change in GDP (2007-2017)	+41% / +89%	Relative decoupling: emissions increased, but slower than GDP
Biodiversity & Forests	Terrestrial protected areas (% of total land area, 2020)	17,62%	CBD Target has been met for terrestrial ecosystems (17% by 2020)
	Threatened species (% of total evaluated species, 2019)	3,59%	Further conservation efforts needed to secure SDG Target 15.5
	Population around protected areas (% total pop., 10km buffer, 2015)	4,29%	Small proportion of the population living around protected areas
	Forest area change (% change between 2015 and 2020)	-5,44 %	SDG Target 15.2 not achieved (halt deforestation by 2020)
	Sustainable forest management (% area with long-term plan, 2020)	20,38%	Significant efforts needed to meet SDG Target 15.2 (100% by 2020)
	Employment in forestry (number of full-time equivalents, 2015)	NA	No Data
Green and Smart Cities	Proportion of urban population living in slums (% in 2016)	61,80%	Significant efforts needed for SDG Target 11.1 (upgrade by 2030)
	Satisfaction with public transport (% satisfied, 2018)	69,40%	Medium satisfaction (UN SDSN interpretation)
	Solid waste uncollected or dumped in the open (% of total, 2017)	>90%	Significant efforts are needed to meet SDG Target 11.6
	Wastewater receiving primary treatment (% of total)	0,00%	Significant efforts needed to ensure at least full primary treatment
	Urban air pollution (µg/m <sup>3</sup> of PM 2.5 particles, 2016)	73,02 µg/m <sup>3</sup>	Very high air pollution, above key guideline values (WHO, EU, US)
	Alignment of national DRR strategies to Sendai Framework (0-1, 2018)	0,33	Limited alignment with the Sendai Framework (0 to < 0,5)
Sustainable Energy	Access to electricity (% of population, 2018)	17,60%	Significant efforts needed to meet SDG Target 7.1 of 100% by 2030
	Renewable energy (% of total energy consumption, 2016)	79,69%	High share of renewables in total energy consumption
	Renewable electricity (% of electricity production, 2015)	0,75%	Very low share of renewables, low contribution to SDG Target 7.2
	Access to clean cooking (% of total population with access, 2018)	<5%	Significant efforts needed for universal access to clean cooking
	Fossil fuel subsidies (% of GDP, 2015)	NA	No Data
	Energy Intensity (megajoules per constant 2011 PPP GDP, 2017)	6,64 MJ/\$	Energy Intensity is above all EU-27 MS values
Food systems: from Farms to Forks	Rural poverty (% of rural population below 1\$90 a day, 2014)	51,80%	Significant efforts needed to achieve SDG Target 1.1 (0% by 2030)
	Food security (% of population in food crisis or worse, 2019)	7,00%	Progress is still needed to meet SDG Target 2.1 of 0% by 2030
	Nutrition (% of children under 5 who are stunted, 2018)	48,50%	Significant efforts needed to meet SDG Target 2.2 of 0% by 2030
	Fertilizer consumption (kg per hectare, 2016)	0,4 kg/ha	Below lowest EU MS value (60 kg/ha in Romania)
	Land degradation (national area with declining productivity 1999-2013)	6,96%	Progress is still needed to meet SDG Target 15.3 of 0% by 2030
	Agriculture and FOLU share of emissions (% of CO <sub>2</sub> eq in 2017)	79,13%	High share of emissions - Key sector for climate mitigation
Water & Oceans	Population using at least basic drinking water (% of pop., 2017)	50,27%	Significant efforts needed to meet SDG Target 6.1 (100% by 2030)
	Population using at least basic sanitation services (% of pop., 2017)	13,60%	Significant efforts needed to meet SDG Target 6.2 (100% by 2030)
	Water scarcity (m <sup>3</sup> of renewable freshwater per capita, 2014)	183 m <sup>3</sup> /cap	Absolute water scarcity (less than 500m <sup>3</sup> per person per year)
	Water stress (water withdrawal as % of total available water, 2014)	3,75%	Low water stress (less than 25% of resource extraction)
	Marine protected areas (% of total marine area, 2020)	Landlocked	Indicator not relevant because the country is landlocked
	Fish stocks overexploited or collapsed (% of fish stocks, 2014)	Landlocked	Indicator not relevant because the country is landlocked

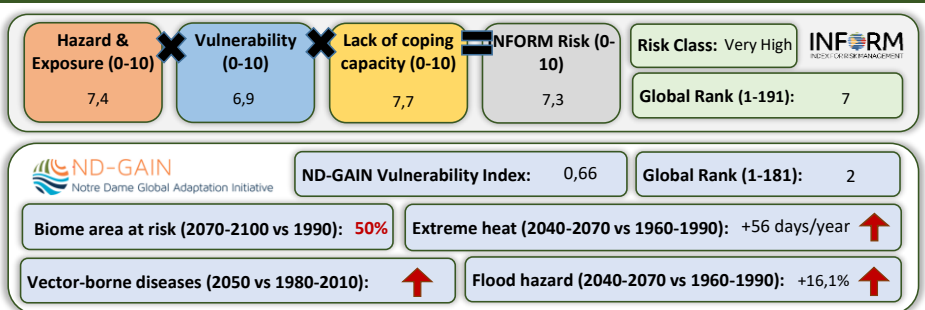
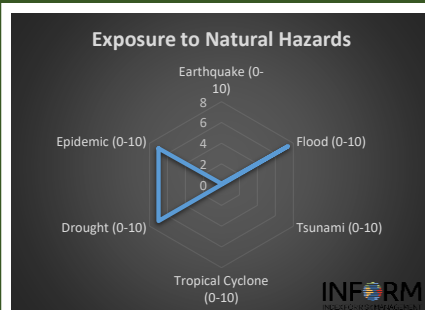
## Greenhouse Gas Emission History (Production-based)



## Historic Trends of selected indicators per Green Deal Pillar (Base 100)



## Climate Adaptation Needs



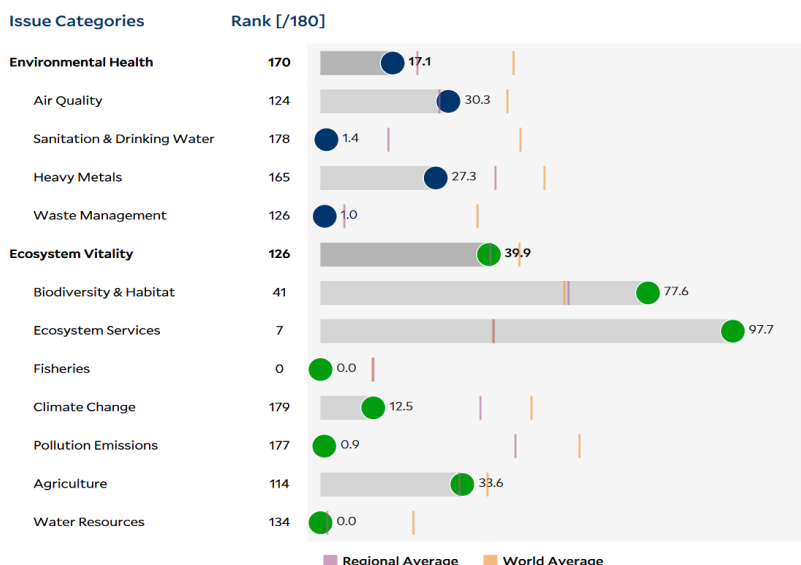
## Environmental Performance Index 2020

2020 EPI Country Rank (out of 180)

152

2020 EPI Score [0=worst, 100=best]

30,8



## SDG Index 2020

(UN SDSN & Bertelsmann Stiftung)



### Legend:

- SDG achieved
- Challenges remain
- Significant challenges remain
- Major challenges remain
- Information unavailable