



Green Deal Country Fiche

Mozambique

Population in 2019
30,37 million habitants

Projected population in 2050
65,31 million habitants

Surface
799,4 thousands km²

Population density (2019)
38 habitants per km²

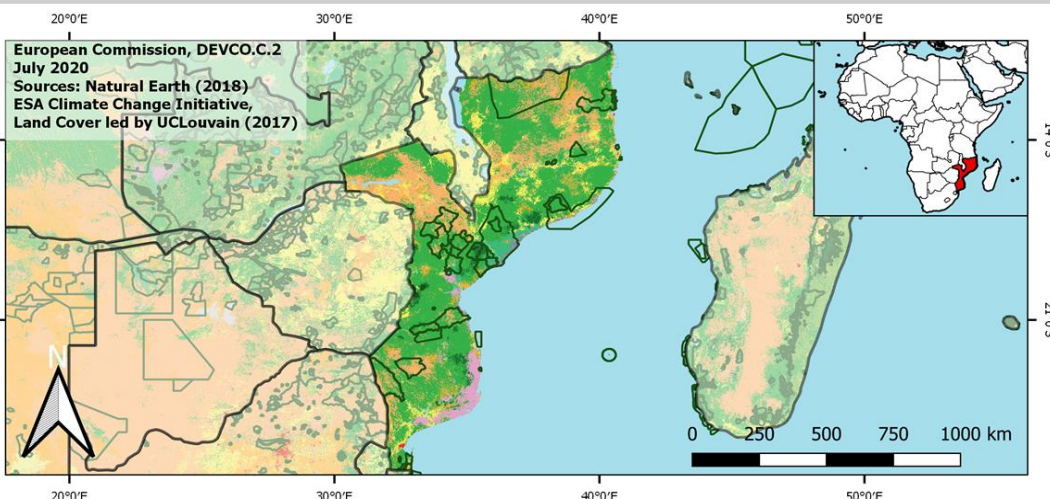
GDP per capita
503,57 US\$ (2019)

Population living below 1,90 \$/day
63,70 % in 2014

Human Development Index
0,46 (2019, UN target: >0,8)

Legend

- Main Protected Areas
- Land Cover Classes**
 - Cropland rainfed
 - Cropland irrigated
 - Mosaic crops/nat.veg
 - Tropical dense forest
 - Deciduous forest
 - Coniferous forest
 - Mixed forest
 - Shrubland
 - Grassland
 - Sparse vegetation
 - Swamp forest
 - Mangrove
 - Swamps
 - Urban areas
 - Bare areas
 - Water bodies
 - Permanent snow and ice



Share of global emissions (2018)
0,023%

NDC: Mitigation Summary

(NDC from 2018)

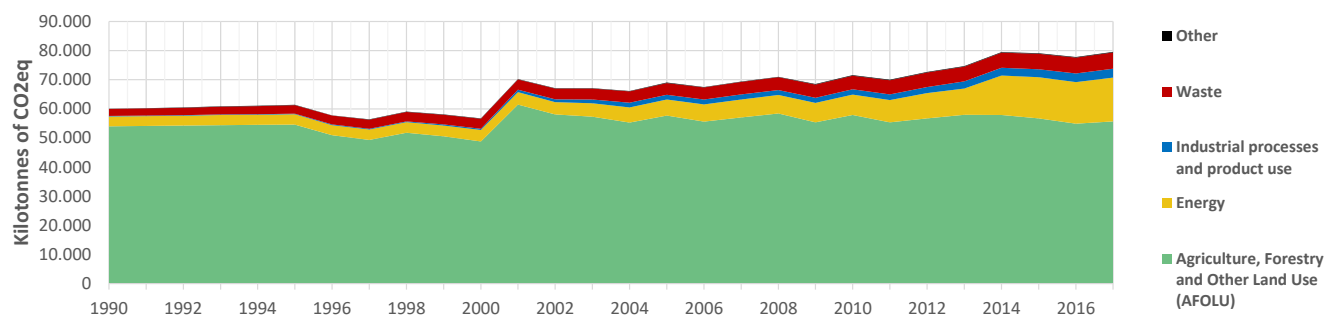
Mozambique communicated its mitigation contribution in the form of actions (policies/programmes): NCCAMS (2013 to 2030), energy strategies/policies/regulations, the National REDD+ Strategy and urban mobility and waste strategies and projects.

INTPA "NDC Group"

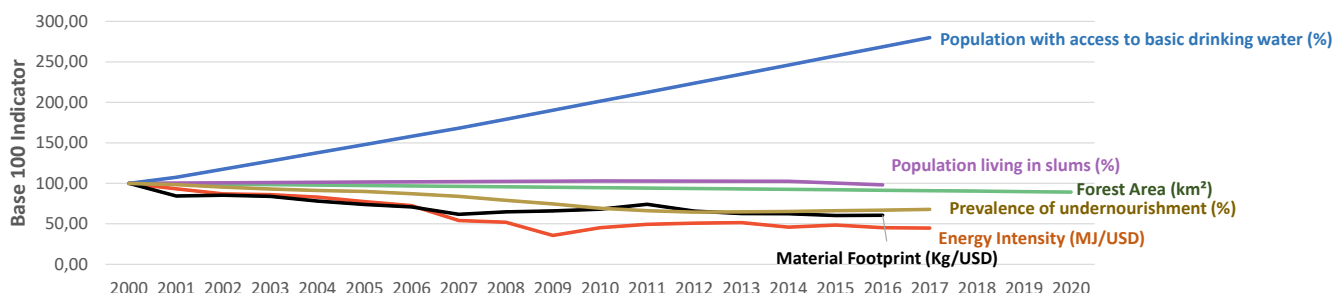
Group 3 - Suggested focus on adaptation for EU cooperation

Pillar	Indicator Name and Unit	Value	Interpretation
Green, circular and low-carbon economy	Ecological footprint (Consumption in global hectares per capita, 2017)	0,8 gh/cap	Within the global sustainable threshold of 1,6 gha per capita
	Recycling and composting rate (% of total solid waste, 2017)	<5%	No or very low rate of recycling and composting (min EU MS = 7%)
	Water productivity (USD of GDP per m ³ of water extracted, 2017)	7,88 \$/m ³	Low water productivity (minimum EU MS value : 10 \$/m ³)
	Material footprint (Kg of raw materials used per USD of GDP, 2010)	3,8 kg/\$	Highly resource-inefficient production and consumption practices
	Sustainable Consumption and Production Policy Framework (2017)	D	No policy framework for SCP has been reported to the UN
	Change in emissions (production) vs change in GDP (2007-2017)	+17% / +27%	Relative decoupling: emissions increased, but slower than GDP
Biodiversity & Forests	Terrestrial protected areas (% of total land area, 2020)	21,36%	CBD Target has been met for terrestrial ecosystems (17% by 2020)
	Threatened species (% of total evaluated species, 2019)	8,78%	High share of threatened species, risk missing SDG target 15.5
	Population around protected areas (% total pop., 10km buffer, 2015)	11,13%	Important share of population - consider landscape approach
	Forest area change (% change between 2015 and 2020)	-3,15 %	SDG Target 15.2 not achieved (halt deforestation by 2020)
	Sustainable forest management (% area with long-term plan, 2020)	60,49%	Further efforts needed to meet SDG Target 15.2 (100% by 2020)
	Employment in forestry (number of full-time equivalents, 2015)	14000 FTE	Low share of total employment (<0,5% of total labor force in 2015)
Green and Smart Cities	Proportion of urban population living in slums (% in 2016)	76,70%	Significant efforts needed for SDG Target 11.1 (upgrade by 2030)
	Satisfaction with public transport (% satisfied, 2018)	53,89%	Medium satisfaction (UN SDSN interpretation)
	Solid waste uncollected or dumped in the open (% of total, 2017)	99%	Significant efforts are needed to meet SDG Target 11.6
	Wastewater receiving primary treatment (% of total)	22,00%	Significant efforts needed to ensure at least full primary treatment
	Urban air pollution (µg/m ³ of PM 2.5 particles, 2016)	18,43 µg/m ³	Above EU 2020 target (18µg/m ³) but below US Standard (35µg/m ³)
	Alignment of national DRR strategies to Sendai Framework (0-1, 2017)	0,68	Moderate alignment with the Sendai Framework (0,5 to < 0,75)
Sustainable Energy	Access to electricity (% of population, 2018)	31,10%	Significant efforts needed to meet SDG Target 7.1 of 100% by 2030
	Renewable energy (% of total energy consumption, 2016)	79,94%	High share of renewables in total energy consumption
	Renewable electricity (% of electricity production, 2015)	86,41%	High share of renewable electricity
	Access to clean cooking (% of total population with access, 2018)	6,30%	Significant efforts needed for universal access to clean cooking
	Fossil fuel subsidies (% of GDP, 2015)	5,63%	Among Top 10 countries with highest share of FF subsidies globally
	Energy Intensity (megajoules per constant 2011 PPP GDP, 2017)	13,19 MJ/\$	Energy Intensity is above all EU-27 MS values
Food systems: from Farms to Forks	Rural poverty (% of rural population below \$90 a day, 2014)	72,90%	Significant efforts needed to achieve SDG Target 1.1 (0% by 2030)
	Food security (% of population in food crisis or worse, 2019)	34,00%	Significant efforts needed to meet SDG Target 2.1 of 0% by 2030
	Nutrition (% of children under 5 who are stunted, 2015)	42,30%	Significant efforts needed to meet SDG Target 2.2 of 0% by 2030
	Fertilizer consumption (kg per hectare, 2016)	3,72 kg/ha	Below lowest EU MS value (60 kg/ha in Romania)
	Land degradation (national area with declining productivity 1999-2013)	17,90%	Significant efforts needed to meet SDG Target 15.3 of 0% by 2030
	Agriculture and FOLU share of emissions (% of CO2eq in 2017)	70,02%	High share of emissions - Key sector for climate mitigation
Water & Oceans	Population using at least basic drinking water (% of pop., 2017)	55,69%	Significant efforts needed to meet SDG Target 6.1 (100% by 2030)
	Population using at least basic sanitation services (% of pop., 2017)	29,40%	Significant efforts needed to meet SDG Target 6.2 (100% by 2030)
	Water scarcity (m ³ of renewable freshwater per capita, 2014)	3686 m ³ /cap	Water shortages should be only irregular/local (>1700m ³ /capita)
	Water stress (water withdrawal as % of total available water, 2014)	0,93%	Low water stress (less than 25% of resource extraction)
	Marine protected areas (% of total marine area, 2020)	2,26%	Significant efforts needed to achieve CBD Target of 10% by 2020
	Fish stocks overexploited or collapsed (% of fish stocks, 2014)	19,91%	SDG Target 14.4 of 0% by 2020 not met, progress still needed

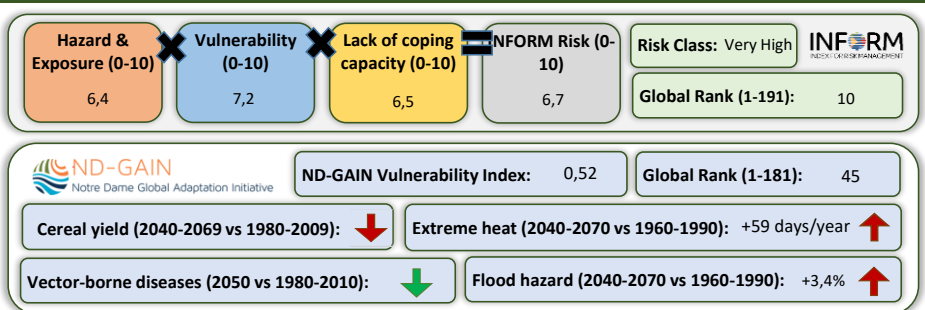
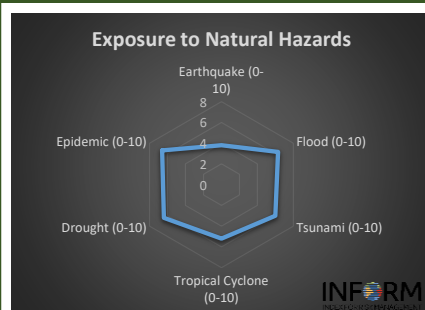
Greenhouse Gas Emission History (Production-based)



Historic Trends of selected indicators per Green Deal Pillar (Base 100)



Climate Adaptation Needs



Environmental Performance Index 2020

2020 EPI Country Rank (out of 180)

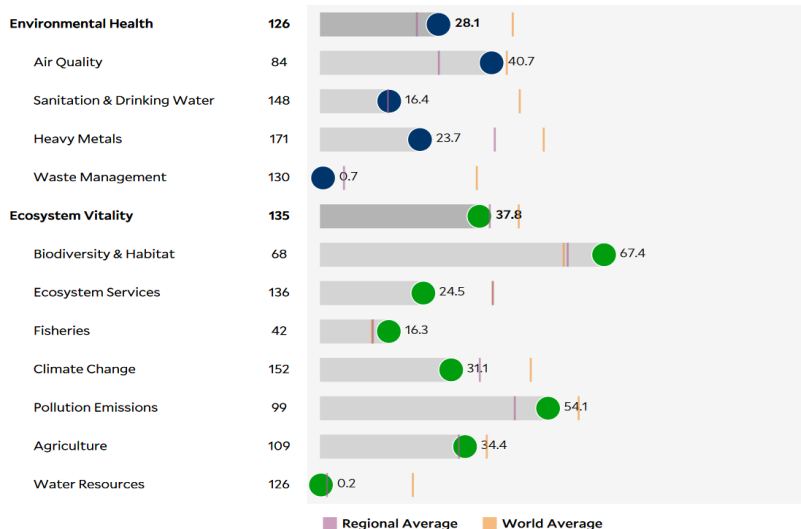
136

2020 EPI Score [0=worst, 100=best]

33,9

Issue Categories

Rank [/180]



SDG Index 2020

(UN SDSN & Bertelsmann Stiftung)



Legend:

- SDG achieved
- Challenges remain
- Significant challenges remain
- Major challenges remain
- Information unavailable