



## Green Deal Country Fiche

### Micronesia (FS)

Population in 2019  
0,11 million habitants

Projected population in 2050  
0,14 million habitants

Surface  
0,7 thousands km<sup>2</sup>

Population density (2019)  
163 habitants per km<sup>2</sup>

GDP per capita  
3.568,29 US\$ (2018)

Population living below 1,90 \$/day  
15,40 % in 2013

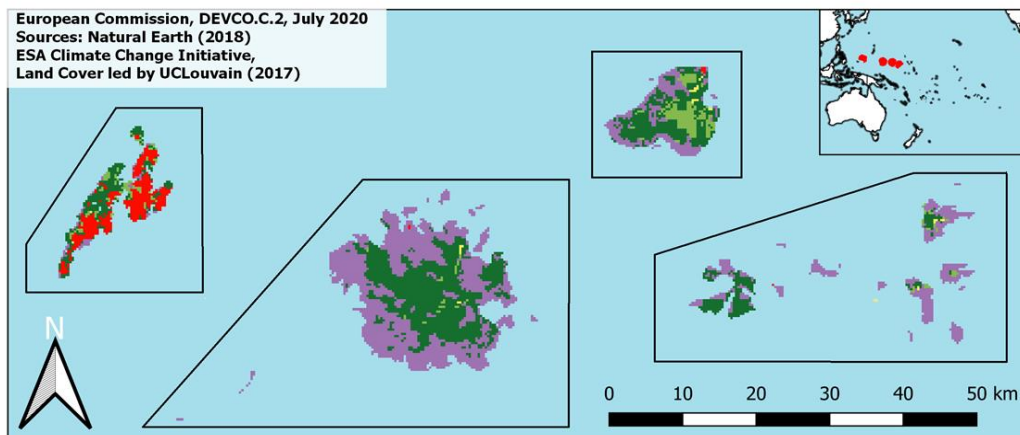
Human Development Index  
0,62 (2019, UN target: >0,8)

#### Legend

##### Land Cover Classes

- Cropland rainfed
- Cropland irrigated
- Mosaic crops/nat.veg
- Tropical dense forest
- Deciduous forest
- Coniferous forest
- Mixed forest
- Shrubland
- Grassland
- Sparse vegetation
- Swamp forest
- Mangrove
- Swamps
- Urban areas
- Bare areas
- Water bodies
- Permanent snow and ice

European Commission, DEVCO.C.2, July 2020  
Sources: Natural Earth (2018)  
ESA Climate Change Initiative,  
Land Cover led by UCLouvain (2017)



Share of global  
emissions (2018)  
NA

#### NDC: Mitigation Summary

(NDC from 2016)

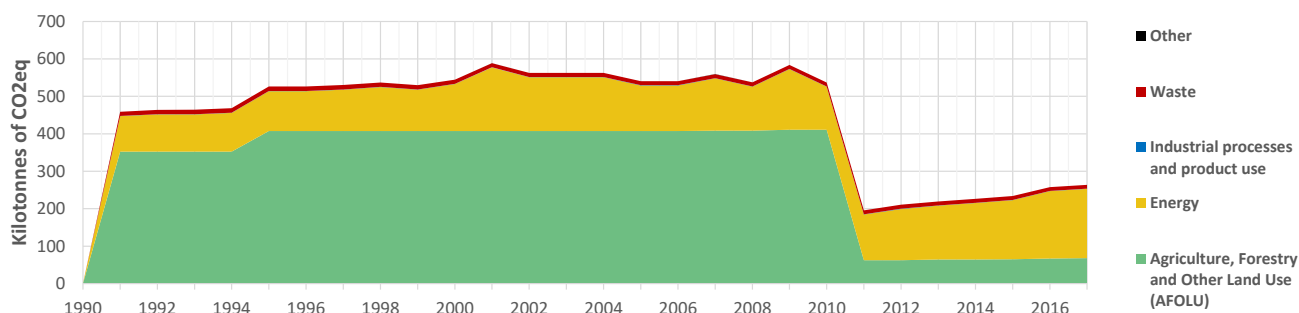
Micronesia unconditionally commits to reduce its GHG emissions by 28% by 2025 below 2000 levels. Conditionally, this could go up to 35%. Actions focus on the energy sector.

#### INTPA "NDC Group"

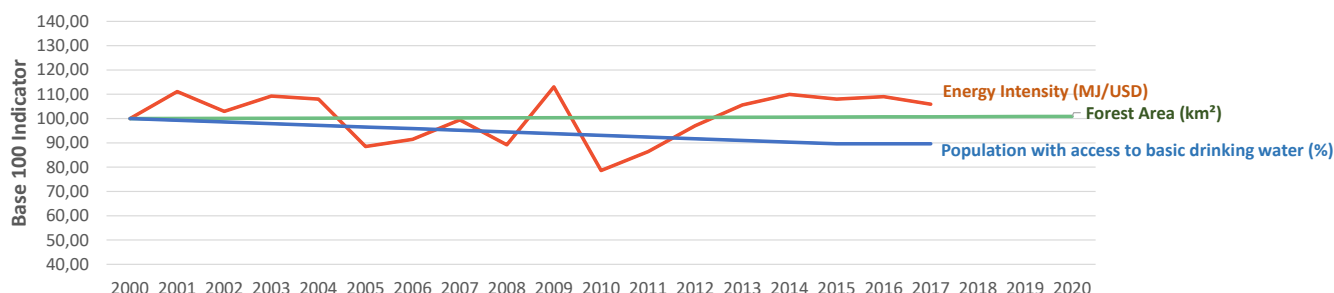
Group 3 - Suggested focus on adaptation for EU cooperation

Pillar	Indicator Name and Unit	Value	Interpretation
Green, circular and low-carbon economy	Ecological footprint (Consumption in global hectares per capita, 2017)	NA	No Data
	Recycling and composting rate (% of total solid waste, 2017)	NA	No Data
	Water productivity (USD of GDP per m <sup>3</sup> of water extracted, 2017)	NA	No Data
	Material footprint (Kg of raw materials used per USD of GDP, 2010)	NA	No Data
	Sustainable Consumption and Production Policy Framework (2017)	D	No policy framework for SCP has been reported to the UN
	Change in emissions (production) vs change in GDP (2007-2017)	-71% / +43%	Absolute decoupling: emissions have decreased in absolute terms
Biodiversity & Forests	Terrestrial protected areas (% of total land area, 2020)	0,05%	Significant efforts are needed to meet CBD Target of 17% by 2020
	Threatened species (% of total evaluated species, 2019)	7,90%	High share of threatened species, risk missing SDG target 15.5
	Population around protected areas (% total pop., 10km buffer, 2015)	5,26%	Small proportion of the population living around protected areas
	Forest area change (% change between 2015 and 2020)	+0,23 %	Forest cover is increasing, SDG Target 15.2 achieved
	Sustainable forest management (% area with long-term plan, 2020)	NA	No Data
	Employment in forestry (number of full-time equivalents, 2015)	NA	No Data
Green and Smart Cities	Proportion of urban population living in slums (% in 2016)	NA	No Data
	Satisfaction with public transport (% satisfied, 2018)	NA	No Data
	Solid waste uncollected or dumped in the open (% of total, 2017)	NA	No Data
	Wastewater receiving primary treatment (% of total)	2,75%	Significant efforts needed to ensure at least full primary treatment
	Urban air pollution (µg/m <sup>3</sup> of PM 2.5 particules, 2016)	10,46 µg/m <sup>3</sup>	Within EU 2020 target (18µg/m <sup>3</sup> ), above WHO guideline (10µg/m <sup>3</sup> )
	Alignment of national DRR strategies to Sendai Framework (0-1 Score)	NA	No Data
Sustainable Energy	Access to electricity (% of population, 2018)	82,10%	Further efforts still needed to meet SDG Target 7.1 of 100% by 2030
	Renewable energy (% of total energy consumption, 2016)	1,64%	Very low share of renewables, low contribution to SDG Target 7.2
	Renewable electricity (% of electricity production, 2015)	1,60%	Very low share of renewables, low contribution to SDG Target 7.2
	Access to clean cooking (% of total population with access, 2016)	11,97%	Significant efforts needed for universal access to clean cooking
	Fossil fuel subsidies (% of GDP, 2015)	NA	No Data
	Energy Intensity (megajoules per constant 2011 PPP GDP, 2017)	6,09 MJ/\$	Energy Intensity above EU average, but still within range of EU MS
Food systems: from Farms to Forks	Rural poverty (% of rural population below 1\$90 a day, 2018)	NA	No Data
	Food security (% of population in food crisis or worse, 2019)	NA	No Data
	Nutrition (% of children under 5 who are stunted, 2019)	NA	No Data
	Fertilizer consumption (kg per hectare, 2016)	NA	No Data
	Land degradation (national area with declining productivity 1999-2013)	0,00%	Progress is still needed to meet SDG Target 15.3 of 0% by 2030
	Agriculture and FOLU share of emissions (% of CO2eq in 2017)	25,78%	Medium share of emissions - Relevant for climate mitigation
Water & Oceans	Population using at least basic drinking water (% of pop., 2017)	78,57%	Further progress needed to meet SDG Target 6.1 (100% by 2030)
	Population using at least basic sanitation services (% of pop., 2017)	88,30%	Further progress needed to meet SDG Target 6.2 (100% by 2030)
	Water scarcity (m <sup>3</sup> of renewable freshwater per capita, 2014)	NA	No Data
	Water stress (water withdrawal as % of total available water, 2014)	NA	No Data
	Marine protected areas (% of total marine area, 2020)	0,05%	Significant efforts needed to achieve CBD Target of 10% by 2020
	Fish stocks overexploited or collapsed (% of fish stocks, 2014)	94,39%	SDG Target 14.4 (0% by 2020) not met, significant efforts needed

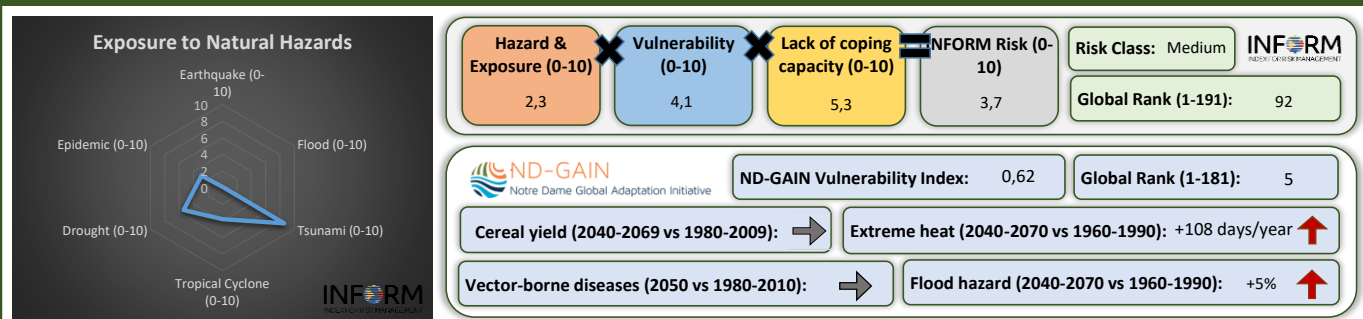
## Greenhouse Gas Emission History (Production-based)



## Historic Trends of selected indicators per Green Deal Pillar (Base 100)



## Climate Adaptation Needs



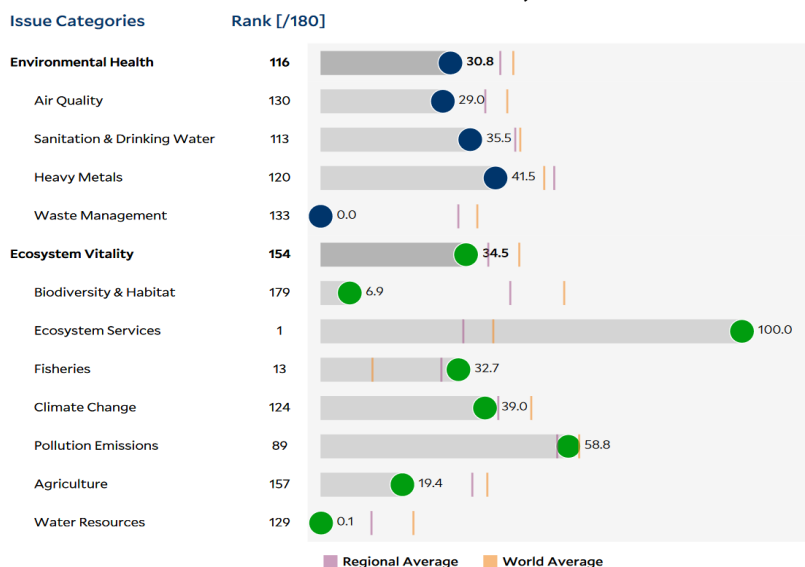
## Environmental Performance Index 2020

2020 EPI Country Rank (out of 180)

143

2020 EPI Score [0=worst, 100=best]

33,0



## SDG Index 2020

(UN SDSN & Bertelsmann Stiftung)



### Legend:

- SDG achieved
- Challenges remain
- Significant challenges remain
- Major challenges remain
- Information unavailable