



Green Deal Country Fiche

Mexico

Population in 2019
127,58 million habitants

Projected population in 2050
155,15 million habitants

Surface
1.952,6 thousands km²

Population density (2019)
65 habitants per km²

GDP per capita
9.946,03 US\$ (2019)

Population living below 1,90 \$/day
1,70 % in 2018

Human Development Index
0,78 (2019, UN target: >0,8)

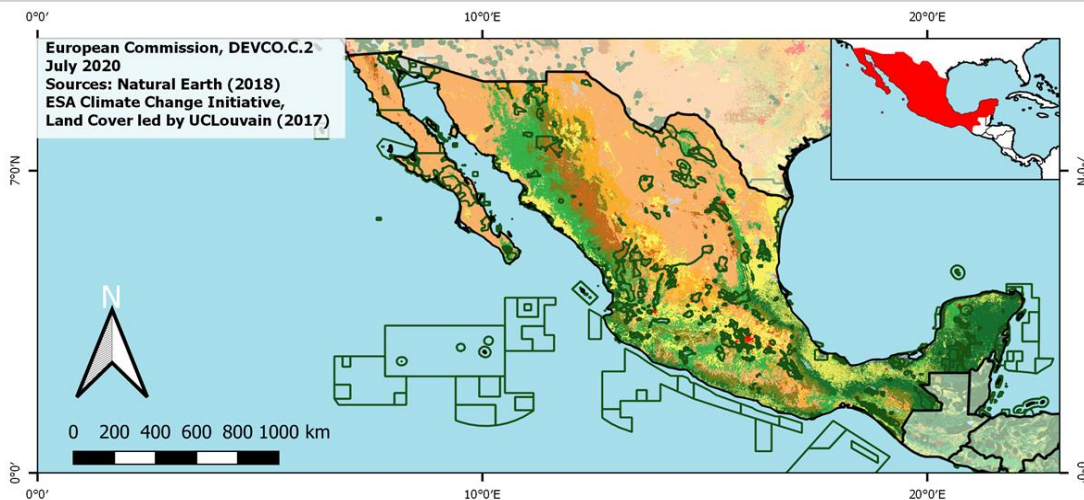
Legend

Main Protected Areas

Land Cover Classes

- Cropland rainfed
- Cropland irrigated
- Mosaic crops/nat.veg
- Tropical dense forest
- Deciduous forest
- Coniferous forest
- Mixed forest
- Shrubland
- Grassland
- Sparse vegetation
- Swamp forest
- Mangrove
- Swamps
- Urban areas
- Bare areas
- Water bodies
- Permanent snow and ice

European Commission, DEVCO.C.2
July 2020
Sources: Natural Earth (2018)
ESA Climate Change Initiative,
Land Cover led by UCLouvain (2017)



Share of global
emissions (2018)
1,305%

NDC: Mitigation Summary

(NDC from 2020)

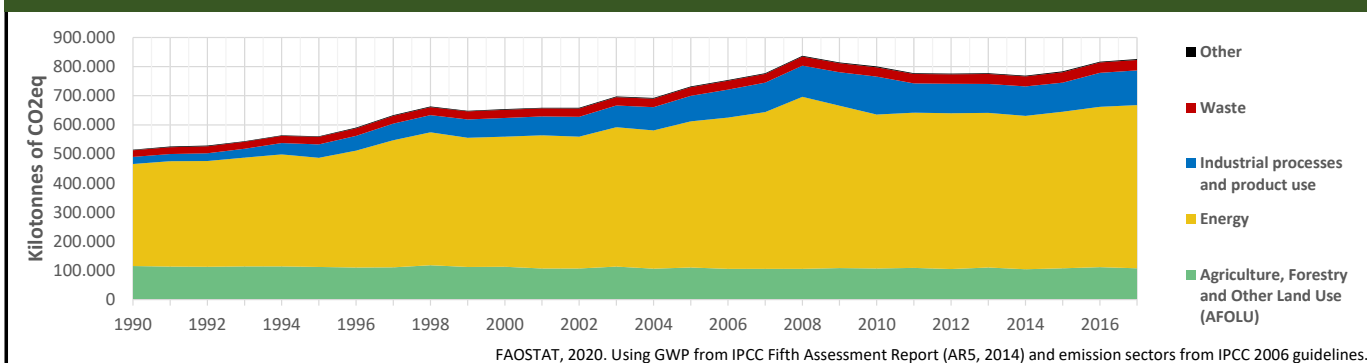
Mexico is unconditionally committed to reduce 22% of its GHG and 51% of its black carbon emissions by 2030 compared to BAU. Conditionally, this could increase up to 36% and 70%. Focus sectors: energy, industrial processes, agriculture, waste, LULUCF.

INTPA "NDC Group"

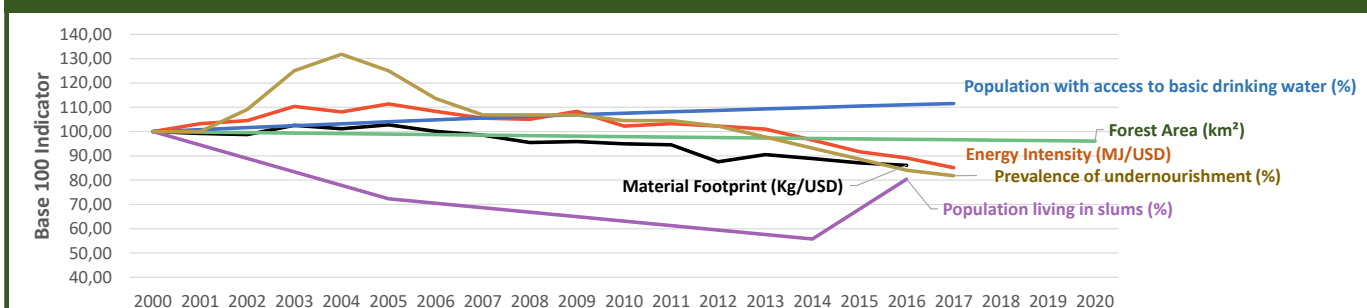
Group 1 - Suggested focus on mitigation for EU cooperation

Pillar	Indicator Name and Unit	Value	Interpretation
Green, circular and low-carbon economy	Ecological footprint (Consumption in global hectares per capita, 2017)	2,62 gh/cap	Above the global sustainable threshold of 1,6 gha per capita
	Recycling and composting rate (% of total solid waste, 2017)	<5%	No or very low rate of recycling and composting (min EU MS = 7%)
	Water productivity (USD of GDP per m ³ of water extracted, 2017)	12,94 \$/m ³	Less water efficient than EU average, but within range of EU MS
	Material footprint (Kg of raw materials used per USD of GDP, 2010)	0,85 kg/\$	Smaller footprint than the EU-27 average of 0,97 kg/USD
	Sustainable Consumption and Production Policy Framework (2017)	C1	No SCP macro policy or policy instrument reported to the UN
	Change in emissions (production) vs change in GDP (2007-2017)	0% / +10%	Relative decoupling: emissions increased, but slower than GDP
Biodiversity & Forests	Terrestrial protected areas (% of total land area, 2020)	14,48%	Further progress is needed to meet CBD Target of 17% by 2020
	Threatened species (% of total evaluated species, 2019)	17,34%	High share of threatened species, risk missing SDG target 15.5
	Population around protected areas (% total pop., 10km buffer, 2015)	62,07%	Very significant share of population - Landscape approach is key
	Forest area change (% change between 2015 and 2020)	-0,96 %	SDG Target 15.2 not achieved (halt deforestation by 2020)
	Sustainable forest management (% area with long-term plan, 2020)	NA	No Data
Green and Smart Cities	Employment in forestry (number of full-time equivalents, 2015)	147840 FTE	Low share of total employment (<0,5% of total labor force in 2015)
	Proportion of urban population living in slums (% in 2016)	16,00%	Further efforts needed for SDG Target 11.1 (upgrade by 2030)
	Satisfaction with public transport (% satisfied, 2018)	60,42%	Medium satisfaction (UN SDSN interpretation)
	Solid waste uncollected or dumped in the open (% of total, 2017)	26%	Further efforts are needed to meet SDG Target 11.6
	Wastewater receiving primary treatment (% of total)	50,20%	Further efforts needed to ensure at least full primary treatment
Sustainable Energy	Urban air pollution (µg/m ³ of PM 2.5 particles, 2016)	20,88 µg/m ³	Above EU 2020 target (18µg/m ³) but below US Standard (35µg/m ³)
	Alignment of national DRR strategies to Sendai Framework (0-1, 2019)	0,93	Substantial alignment with the Sendai Framework (1)
	Access to electricity (% of population, 2018)	100,00%	SDG Target 7.1 has been achieved
	Renewable energy (% of total energy consumption, 2016)	9,21%	Very low share of renewables, low contribution to SDG Target 7.2
	Renewable electricity (% of electricity production, 2015)	15,40%	Low share, increases needed to contribute to SDG Target 7.2
Food systems: from Farms to Forks	Access to clean cooking (% of total population with access, 2016)	85,35%	Further efforts still needed for universal access to clean cooking
	Fossil fuel subsidies (% of GDP, 2015)	0,00%	No fossil-fuel subsidies, SDG Target 12.C achieved
	Energy Intensity (megajoules per constant 2011 PPP GDP, 2017)	3,37 MJ/\$	Energy Intensity within range of EU-MS, below the EU-27 average
	Rural poverty (% of rural population below \$90 a day, 2018)	4,80%	Some efforts needed to achieve SDG Target 1.1 (0% by 2030)
	Food security (% of pop in moderate or severe insecurity, 2016-2018)	28,00%	Significant efforts needed to meet SDG Target 2.1 of 0% by 2030
Water & Oceans	Nutrition (% of children under 5 who are stunted, 2016)	10,00%	Significant efforts needed to meet SDG Target 2.2 of 0% by 2030
	Fertilizer consumption (kg per hectare, 2016)	114,01 kg/ha	Within range of EU MS values (below EU overall use of 153 kg/ha)
	Land degradation (national area with declining productivity 1999-2013)	20,30%	Significant efforts needed to meet SDG Target 15.3 of 0% by 2030
	Agriculture and FOLU share of emissions (% of CO ₂ eq in 2017)	13,02%	Medium share of emissions - Relevant for climate mitigation
	Population using at least basic drinking water (% of pop., 2017)	99,32%	Some progress still needed to meet SDG Target 6.1 (100% by 2030)
Water & Oceans	Population using at least basic sanitation services (% of pop., 2017)	91,20%	Further progress needed to meet SDG Target 6.2 (100% by 2030)
	Water scarcity (m ³ of renewable freshwater per capita, 2014)	3296 m ³ /cap	Water shortages should be only irregular/local (>1700m ³ /capita)
	Water stress (water withdrawal as % of total available water, 2014)	25,90%	Medium water stress, but still within ecological requirements
	Marine protected areas (% of total marine area, 2020)	22,08%	Aichi Target 11 of the CBD has been met for marine ecosystems
	Fish stocks overexploited or collapsed (% of fish stocks, 2014)	35,48%	SDG Target 14.4 (0% by 2020) not met, significant efforts needed

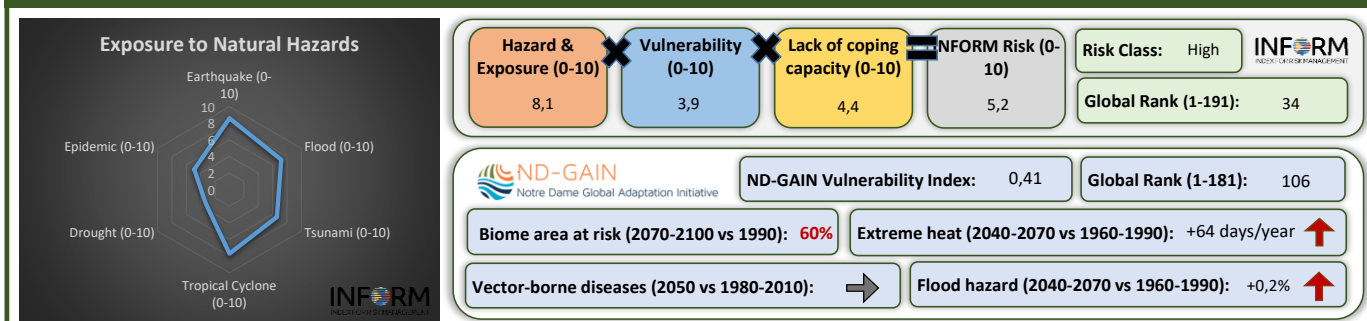
Greenhouse Gas Emission History (Production-based)



Historic Trends of selected indicators per Green Deal Pillar (Base 100)



Climate Adaptation Needs



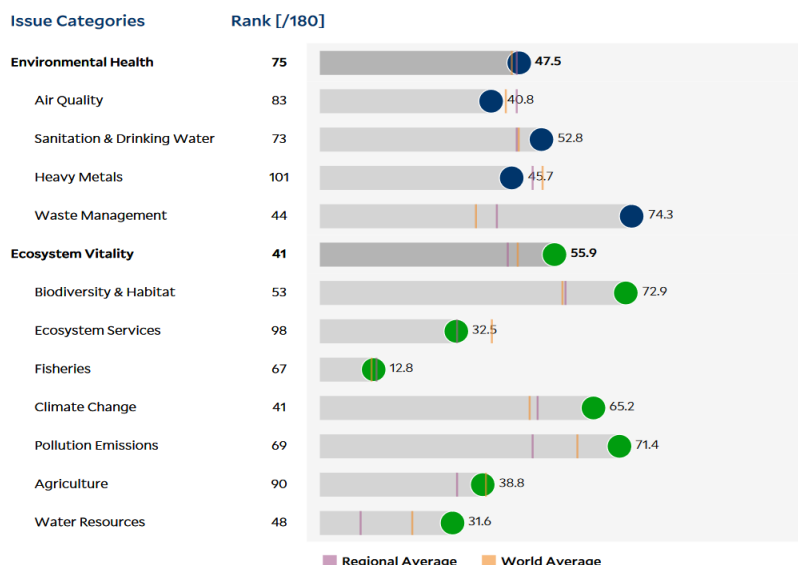
Environmental Performance Index 2020

2020 EPI Country Rank (out of 180)

51

2020 EPI Score [0=worst, 100=best]

52,6



SDG Index 2020

(UN SDSN & Bertelsmann Stiftung)



Legend:

- SDG achieved
- Challenges remain
- Significant challenges remain
- Major challenges remain
- Information unavailable