



## Green Deal Country Fiche

### Mauritius

Population in 2019  
1,27 million habitants

Projected population in 2050  
1,18 million habitants

Surface  
2,0 thousands km<sup>2</sup>

Population density (2019)  
633 habitants per km<sup>2</sup>

GDP per capita  
11.099,24 US\$ (2019)

Population living below 1,90 \$/day  
0,20 % in 2017

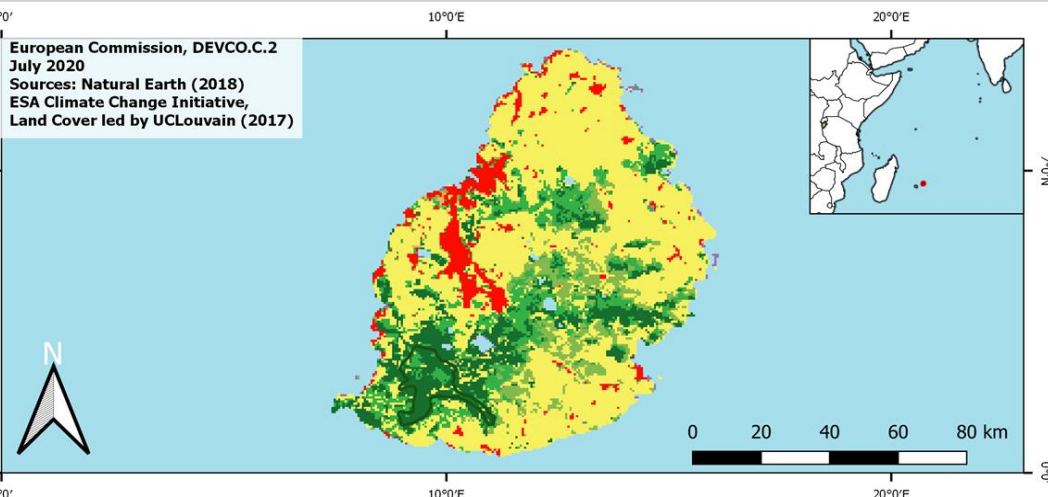
Human Development Index  
0,80 (2019, UN target: >0,8)

#### Legend

Main Protected Areas

#### Land Cover Classes

- Cropland rainfed
- Cropland irrigated
- Mosaic crops/nat.veg
- Tropical dense forest
- Deciduous forest
- Coniferous forest
- Mixed forest
- Shrubland
- Grassland
- Sparse vegetation
- Swamp forest
- Mangrove
- Swamps
- Urban areas
- Bare areas
- Water bodies
- Permanent snow and ice



Share of global  
emissions (2018)  
0,013%

#### NDC: Mitigation Summary

(NDC from 2016)

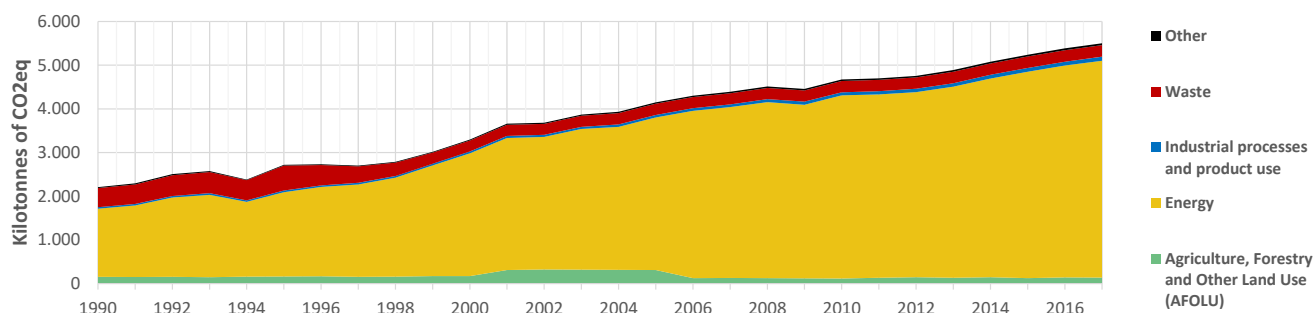
The Republic of Mauritius conditionally aspires to abate its greenhouse gas emissions by 30% by 2030 relative to the business as usual scenario of 7 MtCO<sub>2</sub>eq. The mitigation contribution focuses on energy, transportation, industry, AFOLU and waste.

#### INTPA "NDC Group"

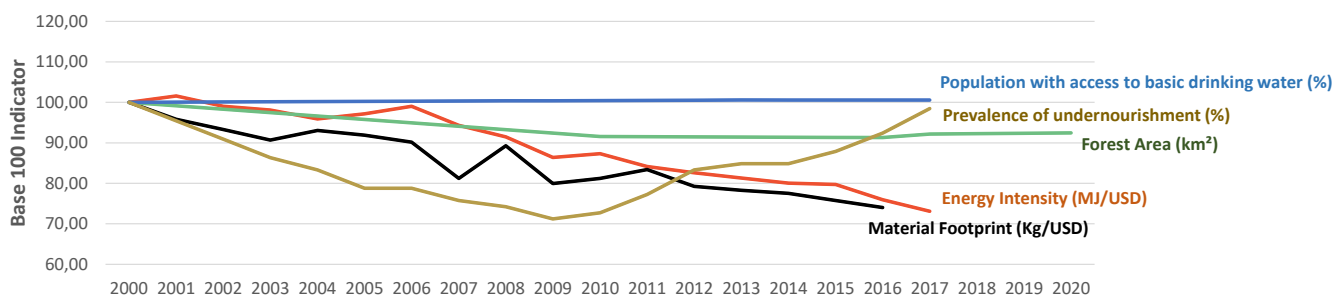
Group 3 - Suggested focus on adaptation for EU cooperation

Pillar	Indicator Name and Unit	Value	Interpretation
Green, circular and low-carbon economy	Ecological footprint (Consumption in global hectares per capita, 2017)	3,06 gh/cap	Above the global sustainable threshold of 1,6 gha per capita
	Recycling and composting rate (% of total solid waste, 2017)	9%	Low recycling and composting rate (overall EU-27 value = 45%)
	Water productivity (USD of GDP per m <sup>3</sup> of water extracted, 2017)	17,63 \$/m <sup>3</sup>	Less water efficient than EU average, but within range of EU MS
	Material footprint (Kg of raw materials used per USD of GDP, 2010)	2,1 kg/\$	Larger footprint than EU average (0,97), but within range of EU MS
	Sustainable Consumption and Production Policy Framework (2017)	B1	Policy framework for SCP, but lacks a coordination mechanism
	Change in emissions (production) vs change in GDP (2007-2017)	+26% / +63%	Relative decoupling: emissions increased, but slower than GDP
Biodiversity & Forests	Terrestrial protected areas (% of total land area, 2020)	4,77%	Significant efforts are needed to meet CBD Target of 17% by 2020
	Threatened species (% of total evaluated species, 2019)	12,49%	High share of threatened species, risk missing SDG target 15.5
	Population around protected areas (% total pop., 10km buffer, 2015)	86,04%	Very significant share of population - Landscape approach is key
	Forest area change (% change between 2015 and 2020)	+1,23 %	Forest cover is increasing, SDG Target 15.2 achieved
	Sustainable forest management (% area with long-term plan, 2020)	21,33%	Significant efforts needed to meet SDG Target 15.2 (100% by 2020)
	Employment in forestry (number of full-time equivalents, 2015)	3800 FTE	Medium share of employment (0,5%-1% of total labor force, 2015)
Green and Smart Cities	Proportion of urban population living in slums (% in 2016)	NA	No Data
	Satisfaction with public transport (% satisfied, 2018)	71,87%	Medium satisfaction (UN SDSN interpretation)
	Solid waste uncollected or dumped in the open (% of total, 2017)	2%	Some efforts are still needed to meet SDG Target 11.6
	Wastewater receiving primary treatment (% of total)	10,00%	Significant efforts needed to ensure at least full primary treatment
	Urban air pollution (µg/m <sup>3</sup> of PM 2.5 particules, 2016)	13,52 µg/m <sup>3</sup>	Within EU 2020 target (18µg/m <sup>3</sup> ), above WHO guideline (10µg/m <sup>3</sup> )
	Alignment of national DRR strategies to Sendai Framework (0-1 Score)	NA	No Data
Sustainable Energy	Access to electricity (% of population, 2018)	97,47%	Some efforts still needed to meet SDG Target 7.1 of 100% by 2030
	Renewable energy (% of total energy consumption, 2016)	10,34%	Low share, increases needed to contribute to SDG Target 7.2
	Renewable electricity (% of electricity production, 2015)	22,72%	Medium share of renewable electricity
	Access to clean cooking (% of total population with access, 2018)	92,90%	Some efforts still needed towards universal access to clean cooking
	Fossil fuel subsidies (% of GDP, 2015)	NA	No Data
	Energy Intensity (megajoules per constant 2011 PPP GDP, 2017)	2,31 MJ/\$	Energy Intensity within range of EU-MS, below the EU-27 average
Food systems: from Farms to Forks	Rural poverty (% of rural population below 1\$90 a day, 2018)	NA	No Data
	Food security (% of pop in moderate or severe insecurity, 2016-2018)	18,50%	Progress is still needed to meet SDG Target 2.1 of 0% by 2030
	Nutrition (% of children under 5 who are stunted, 2019)	NA	No Data
	Fertilizer consumption (kg per hectare, 2016)	235,31 kg/ha	Among top 25% of countries with most intensive fertilizer use
	Land degradation (national area with declining productivity 1999-2013)	0,05%	Progress is still needed to meet SDG Target 15.3 of 0% by 2030
	Agriculture and FOLU share of emissions (% of CO <sub>2</sub> eq in 2017)	2,54%	Low emission shares from Agriculture, Forestry and Other Land Use
Water & Oceans	Population using at least basic drinking water (% of pop., 2017)	99,87%	Some progress still needed to meet SDG Target 6.1 (100% by 2030)
	Population using at least basic sanitation services (% of pop., 2017)	95,50%	SDG Target 6.2 (100% by 2030) is on track for achievement, but
	Water scarcity (m <sup>3</sup> of renewable freshwater per capita, 2014)	NA	No Data
	Water stress (water withdrawal as % of total available water, 2014)	26,35%	Medium water stress, but still within ecological requirements
	Marine protected areas (% of total marine area, 2020)	0,00%	Significant efforts needed to achieve CBD Target of 10% by 2020
	Fish stocks overexploited or collapsed (% of fish stocks, 2014)	47,94%	SDG Target 14.4 (0% by 2020) not met, significant efforts needed

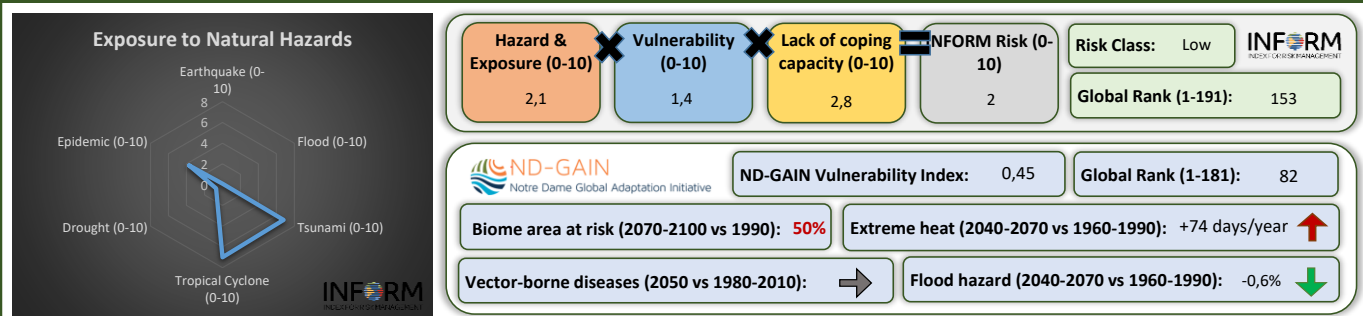
## Greenhouse Gas Emission History (Production-based)



## Historic Trends of selected indicators per Green Deal Pillar (Base 100)



## Climate Adaptation Needs



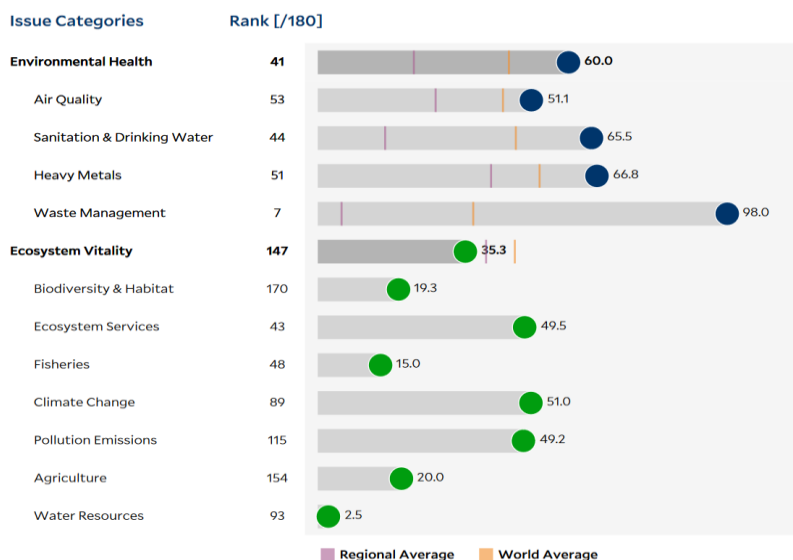
## Environmental Performance Index 2020

2020 EPI Country Rank (out of 180)

82

2020 EPI Score [0=worst, 100=best]

45,1



## SDG Index 2020

(UN SDSN & Bertelsmann Stiftung)



### Legend:

- SDG achieved
- Challenges remain
- Significant challenges remain
- Major challenges remain
- Information unavailable