



Green Deal Country Fiche

Malawi

Population in 2019
18,63 million habitants

Projected population in 2050
38,14 million habitants

Surface
118,5 thousands km²

Population density (2019)
157 habitants per km²

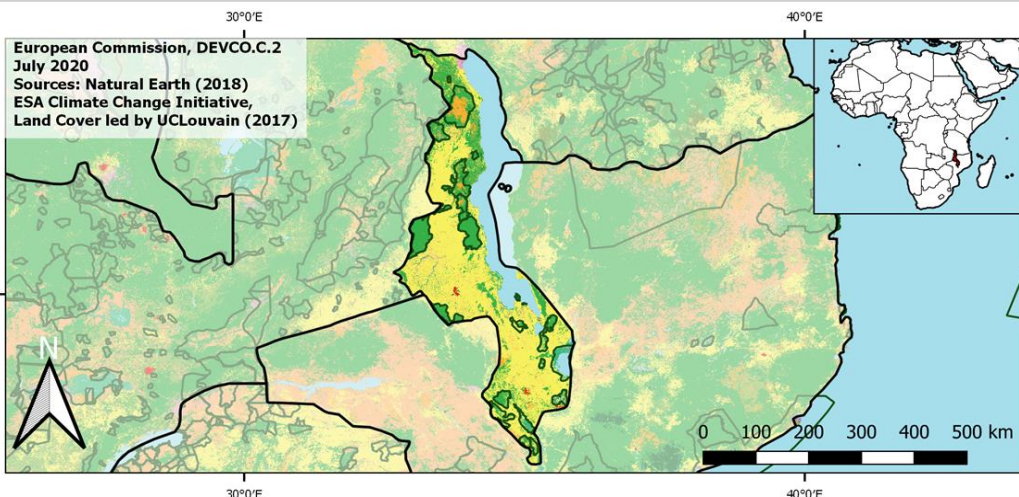
GDP per capita
411,55 US\$ (2019)

Population living below 1,90 \$/day
70,80 % in 2016

Human Development Index
0,48 (2019, UN target: >0,8)

Legend

- Main Protected Areas
- Land Cover Classes**
- Cropland rainfed
- Cropland irrigated
- Mosaic crops/nat.veg
- Tropical dense forest
- Deciduous forest
- Coniferous forest
- Mixed forest
- Shrubland
- Grassland
- Sparse vegetation
- Swamp forest
- Mangrove
- Swamps
- Urban areas
- Bare areas
- Water bodies
- Permanent snow and ice



Share of global
emissions (2018)
0,004%

NDC: Mitigation Summary

(NDC from 2017)

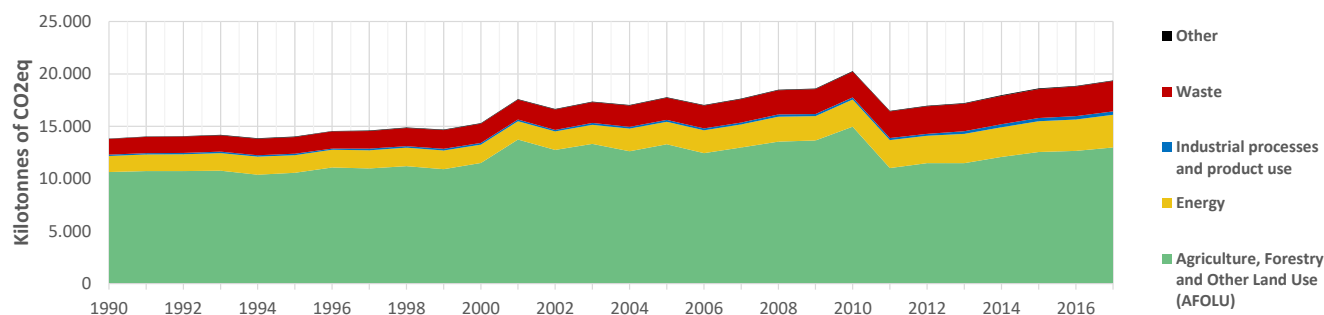
The INDC of Malawi focuses on forestry, agriculture and energy. Implementing all mitigation actions (conditional and unconditional) is expected to reduce the per capita emissions from 1.4 t CO₂eq per capita (2010) to 0.7-0.8 t CO₂eq per capita in 2030.

INTPA "NDC Group"

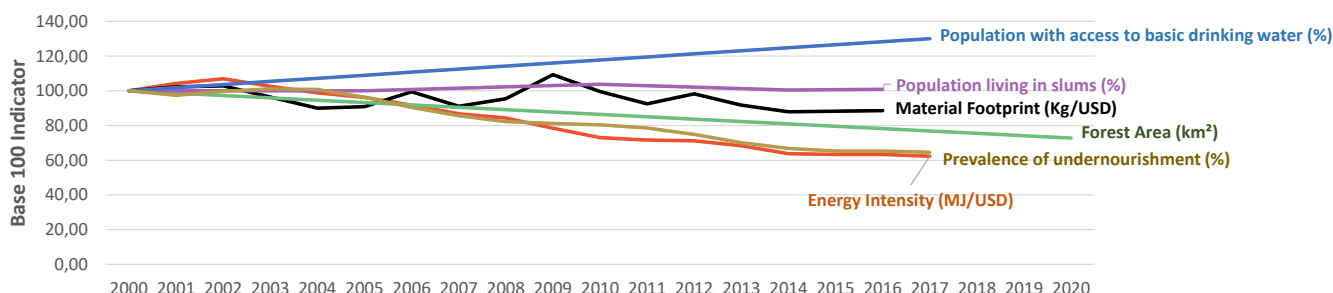
Group 3 - Suggested focus on adaptation for EU cooperation

Pillar	Indicator Name and Unit	Value	Interpretation
Green, circular and low-carbon economy	Ecological footprint (Consumption in global hectares per capita, 2017)	0,9 gh/cap	Within the global sustainable threshold of 1,6 gha per capita
	Recycling and composting rate (% of total solid waste, 2017)	NA	No Data
	Water productivity (USD of GDP per m ³ of water extracted, 2014)	2,74 \$/m ³	Highly inefficient use of water resources
	Material footprint (Kg of raw materials used per USD of GDP, 2010)	2,51 kg/\$	Larger footprint than all EU-27 Member States
	Sustainable Consumption and Production Policy Framework (2017)	D	No policy framework for SCP has been reported to the UN
	Change in emissions (production) vs change in GDP (2007-2017)	+3% / +42%	Relative decoupling: emissions increased, but slower than GDP
Biodiversity & Forests	Terrestrial protected areas (% of total land area, 2020)	22,37%	CBD Target has been met for terrestrial ecosystems (17% by 2020)
	Threatened species (% of total evaluated species, 2019)	5,12%	Medium share of threatened species, risk missing SDG target 15.5
	Population around protected areas (% total pop., 10km buffer, 2015)	48,58%	Very significant share of population - Landscape approach is key
	Forest area change (% change between 2015 and 2020)	-8,57 %	SDG Target 15.2 not achieved (halt deforestation by 2020)
	Sustainable forest management (% area with long-term plan, 2020)	NA	No Data
	Employment in forestry (number of full-time equivalents, 2015)	1000 FTE	Low share of total employment (<0,5% of total labor force in 2015)
Green and Smart Cities	Proportion of urban population living in slums (% in 2016)	67,00%	Significant efforts needed for SDG Target 11.1 (upgrade by 2030)
	Satisfaction with public transport (% satisfied, 2018)	41,87%	Low satisfaction with public transport (UN SDSN interpretation)
	Solid waste uncollected or dumped in the open (% of total, 2017)	NA	No Data
	Wastewater receiving primary treatment (% of total)	0,00%	Significant efforts needed to ensure at least full primary treatment
	Urban air pollution (µg/m ³ of PM 2.5 particles, 2016)	21,9 µg/m ³	Above EU 2020 target (18µg/m ³) but below US Standard (35µg/m ³)
	Alignment of national DRR strategies to Sendai Framework (0-1, 2019)	0,93	Substantial alignment with the Sendai Framework (1)
Sustainable Energy	Access to electricity (% of population, 2018)	18,02%	Significant efforts needed to meet SDG Target 7.1 of 100% by 2030
	Renewable energy (% of total energy consumption, 2016)	78,53%	High share of renewables in total energy consumption
	Renewable electricity (% of electricity production, 2015)	91,31%	High share of renewable electricity
	Access to clean cooking (% of total population with access, 2018)	<5%	Significant efforts needed for universal access to clean cooking
	Fossil fuel subsidies (% of GDP, 2015)	2,41%	Among Top 20 countries with highest share of FF subsidies globally
	Energy Intensity (megajoules per constant 2011 PPP GDP, 2017)	4,13 MJ/\$	Energy Intensity above EU average, but still within range of EU MS
Food systems: from Farms to Forks	Rural poverty (% of rural population below \$90 a day, 2016)	80,90%	Significant efforts needed to achieve SDG Target 1.1 (0% by 2030)
	Food security (% of population in food crisis or worse, 2019)	22,00%	Significant efforts needed to meet SDG Target 2.1 of 0% by 2030
	Nutrition (% of children under 5 who are stunted, 2018)	39,00%	Significant efforts needed to meet SDG Target 2.2 of 0% by 2030
	Fertilizer consumption (kg per hectare, 2016)	21,61 kg/ha	Below lowest EU MS value (60 kg/ha in Romania)
	Land degradation (national area with declining productivity 1999-2013)	13,51%	Significant efforts needed to meet SDG Target 15.3 of 0% by 2030
	Agriculture and FOLU share of emissions (% of CO ₂ eq in 2017)	67,01%	High share of emissions - Key sector for climate mitigation
Water & Oceans	Population using at least basic drinking water (% of pop., 2017)	68,83%	Further progress needed to meet SDG Target 6.1 (100% by 2030)
	Population using at least basic sanitation services (% of pop., 2017)	26,20%	Significant efforts needed to meet SDG Target 6.2 (100% by 2030)
	Water scarcity (m ³ of renewable freshwater per capita, 2014)	946 m ³ /cap	Water scarcity (less than 1000m ³ per person per year)
	Water stress (water withdrawal as % of total available water, 2014)	11,08%	Low water stress (less than 25% of resource extraction)
	Marine protected areas (% of total marine area, 2020)	Landlocked	Indicator not relevant because the country is landlocked
	Fish stocks overexploited or collapsed (% of fish stocks, 2014)	Landlocked	Indicator not relevant because the country is landlocked

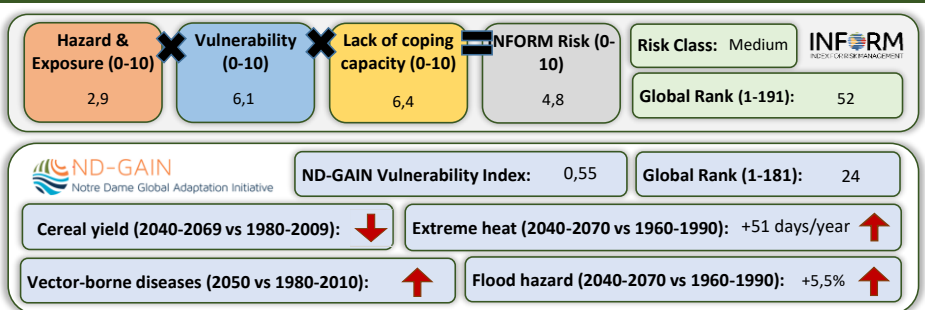
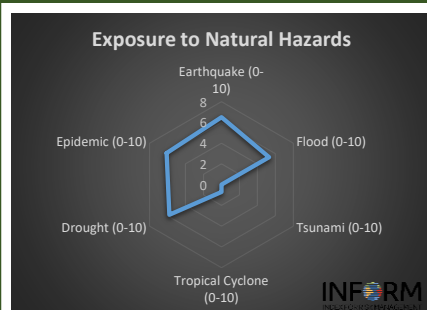
Greenhouse Gas Emission History (Production-based)



Historic Trends of selected indicators per Green Deal Pillar (Base 100)



Climate Adaptation Needs



Environmental Performance Index 2020

2020 EPI Country Rank (out of 180)

112

2020 EPI Score [0=worst, 100=best]

38,3



SDG Index 2020

(UN SDSN & Bertelsmann Stiftung)



Legend:

- SDG achieved
- Challenges remain
- Significant challenges remain
- Major challenges remain
- Information unavailable