



Green Deal Country Fiche

Madagascar

Population in 2019
26,97 million habitants

Projected population in 2050
54,05 million habitants

Surface
587,3 thousands km²

Population density (2019)
46 habitants per km²

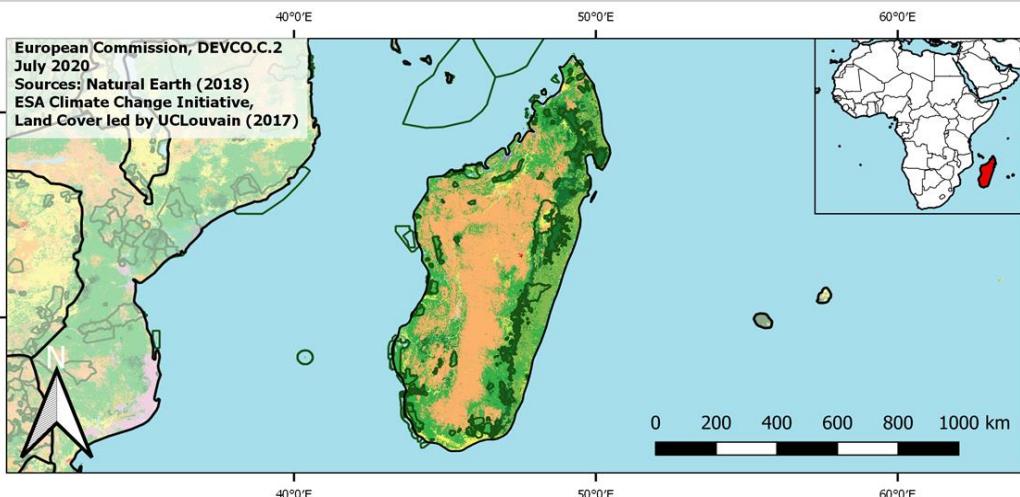
GDP per capita
523,36 US\$ (2019)

Population living below 1,90 \$/day
77,40 % in 2012

Human Development Index
0,53 (2019, UN target: >0,8)

Legend

- Main Protected Areas
- Land Cover Classes**
- Cropland rainfed
- Cropland irrigated
- Mosaic crops/nat.veg
- Tropical dense forest
- Deciduous forest
- Coniferous forest
- Mixed forest
- Shrubland
- Grassland
- Sparse vegetation
- Swamp forest
- Mangrove
- Swamps
- Urban areas
- Bare areas
- Water bodies
- Permanent snow and ice



Share of global
emissions (2018)
0,012%

NDC: Mitigation Summary

(NDC from 2016)

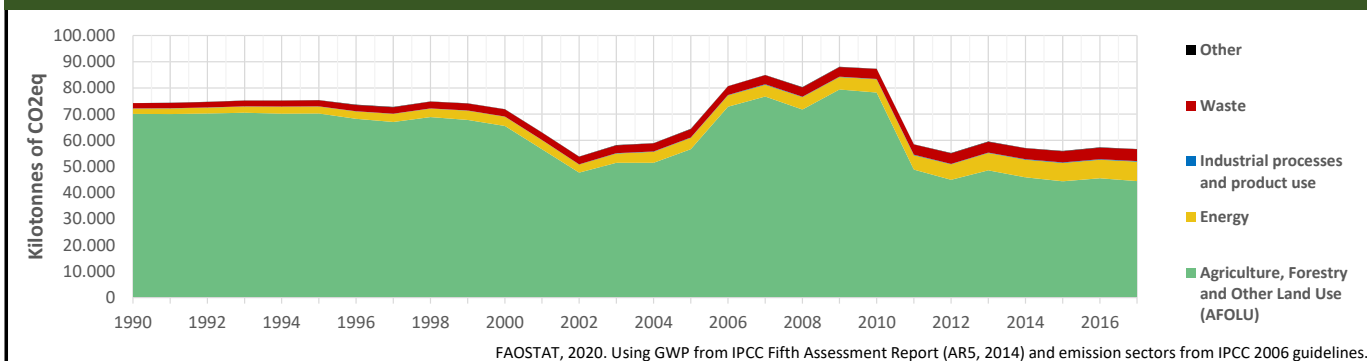
Madagascar aims to reduce its GHG emissions by approximately 30 MtCO₂ by 2030 (14% below BAU) and increase the absorptions of the LULUCF sector by an estimated 61 MtCO₂ in 2030 (32% above BAU). Madagascar commits to 4% of the costs and 96% are

INTPA "NDC Group"

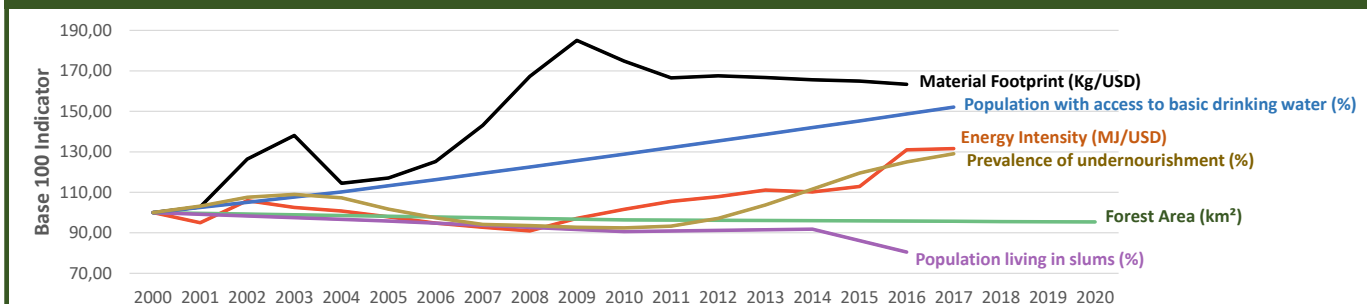
Group 3 - Suggested focus on adaptation for EU cooperation

Pillar	Indicator Name and Unit	Value	Interpretation
Green, circular and low-carbon economy	Ecological footprint (Consumption in global hectares per capita, 2017)	0,92 gh/cap	Within the global sustainable threshold of 1,6 gha per capita
	Recycling and composting rate (% of total solid waste, 2017)	<5%	No or very low rate of recycling and composting (min EU MS = 7%)
	Water productivity (USD of GDP per m ³ of water extracted, 2015)	0,67 \$/m ³	Highly inefficient use of water resources
	Material footprint (Kg of raw materials used per USD of GDP, 2010)	1,72 kg/\$	Larger footprint than EU average (0,97), but within range of EU MS
	Sustainable Consumption and Production Policy Framework (2017)	C1	No SCP macro policy or policy instrument reported to the UN
	Change in emissions (production) vs change in GDP (2007-2017)	-42% / +55%	Absolute decoupling: emissions have decreased in absolute terms
Biodiversity & Forests	Terrestrial protected areas (% of total land area, 2020)	5,59%	Significant efforts are needed to meet CBD Target of 17% by 2020
	Threatened species (% of total evaluated species, 2019)	39,71%	High share of threatened species, risk missing SDG target 15.5
	Population around protected areas (% total pop., 10km buffer, 2015)	18,90%	Important share of population - consider landscape approach
	Forest area change (% change between 2015 and 2020)	-0,53 %	SDG Target 15.2 not achieved (halt deforestation by 2020)
	Sustainable forest management (% area with long-term plan, 2020)	NA	No Data
	Employment in forestry (number of full-time equivalents, 2015)	8000 FTE	Low share of total employment (<0,5% of total labor force in 2015)
Green and Smart Cities	Proportion of urban population living in slums (% in 2016)	67,70%	Significant efforts needed for SDG Target 11.1 (upgrade by 2030)
	Satisfaction with public transport (% satisfied, 2018)	46,39%	Medium satisfaction (UN SDSN interpretation)
	Solid waste uncollected or dumped in the open (% of total, 2017)	99%	Significant efforts are needed to meet SDG Target 11.6
	Wastewater receiving primary treatment (% of total)	5,00%	Significant efforts needed to ensure at least full primary treatment
	Urban air pollution (µg/m ³ of PM 2.5 particles, 2016)	22,48 µg/m ³	Above EU 2020 target (18µg/m ³) but below US Standard (35µg/m ³)
	Alignment of national DRR strategies to Sendai Framework (0-1 Score)	NA	No Data
Sustainable Energy	Access to electricity (% of population, 2018)	25,91%	Significant efforts needed to meet SDG Target 7.1 of 100% by 2030
	Renewable energy (% of total energy consumption, 2016)	68,08%	High share of renewables in total energy consumption
	Renewable electricity (% of electricity production, 2015)	54,60%	High share of renewable electricity
	Access to clean cooking (% of total population with access, 2018)	<5%	Significant efforts needed for universal access to clean cooking
	Fossil fuel subsidies (% of GDP, 2015)	0,96%	Medium share of FF subsidies, above all EU MS values
	Energy Intensity (megajoules per constant 2011 PPP GDP, 2017)	8,87 MJ/\$	Energy Intensity is above all EU-27 MS values
Food systems: from Farms to Forks	Rural poverty (% of rural population below \$90 a day, 2012)	85,30%	Significant efforts needed to achieve SDG Target 1.1 (0% by 2030)
	Food security (% of population in food crisis or worse, 2019)	28,00%	Significant efforts needed to meet SDG Target 2.1 of 0% by 2030
	Nutrition (% of children under 5 who are stunted, 2018)	41,60%	Significant efforts needed to meet SDG Target 2.2 of 0% by 2030
	Fertilizer consumption (kg per hectare, 2016)	5,17 kg/ha	Below lowest EU MS value (60 kg/ha in Romania)
	Land degradation (national area with declining productivity 1999-2013)	11,01%	Significant efforts needed to meet SDG Target 15.3 of 0% by 2030
	Agriculture and FOLU share of emissions (% of CO ₂ eq in 2017)	78,39%	High share of emissions - Key sector for climate mitigation
Water & Oceans	Population using at least basic drinking water (% of pop., 2017)	54,40%	Significant efforts needed to meet SDG Target 6.1 (100% by 2030)
	Population using at least basic sanitation services (% of pop., 2017)	10,50%	Significant efforts needed to meet SDG Target 6.2 (100% by 2030)
	Water scarcity (m ³ of renewable freshwater per capita, 2014)	14286 m ³ /cap	Water shortages should be only irregular/local (>1700m ³ /capita)
	Water stress (water withdrawal as % of total available water, 2014)	5,76%	Low water stress (less than 25% of resource extraction)
	Marine protected areas (% of total marine area, 2020)	0,76%	Significant efforts needed to achieve CBD Target of 10% by 2020
	Fish stocks overexploited or collapsed (% of fish stocks, 2014)	17,44%	SDG Target 14.4 of 0% by 2020 not met, progress still needed

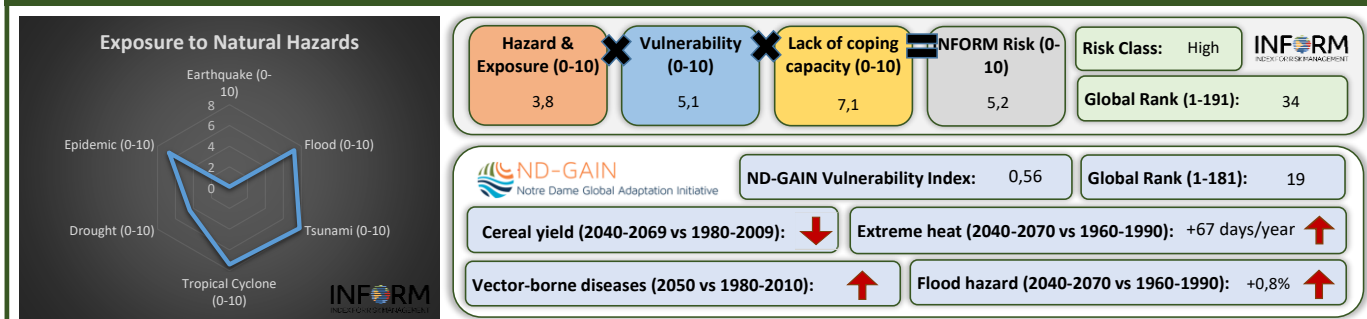
Greenhouse Gas Emission History (Production-based)



Historic Trends of selected indicators per Green Deal Pillar (Base 100)



Climate Adaptation Needs



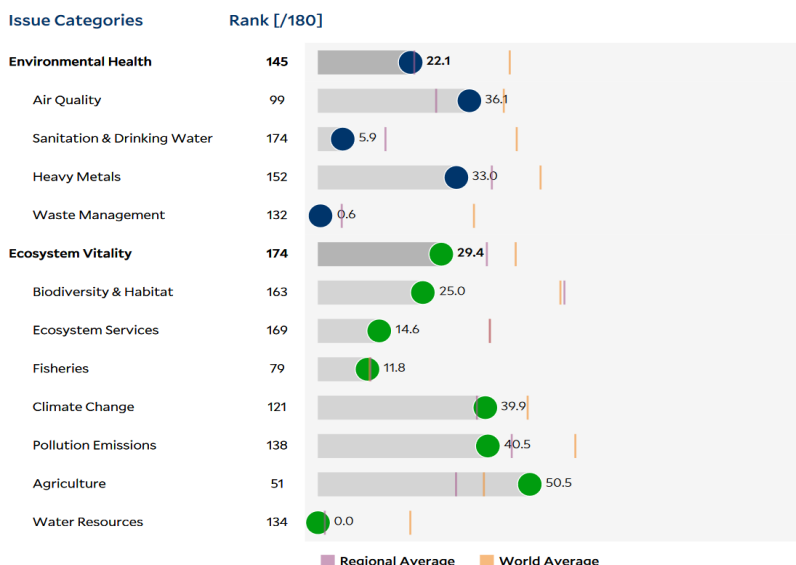
Environmental Performance Index 2020

2020 EPI Country Rank (out of 180)

174

2020 EPI Score [0=worst, 100=best]

26,5



SDG Index 2020

(UN SDSN & Bertelsmann Stiftung)



Legend:

- SDG achieved
- Challenges remain
- Significant challenges remain
- Major challenges remain
- Information unavailable