



## Green Deal Country Fiche

Lao PDR

Population in 2019  
7,17 million habitants

Projected population in 2050  
9,48 million habitants

Surface  
236,8 thousands km<sup>2</sup>

Population density (2019)  
30 habitants per km<sup>2</sup>

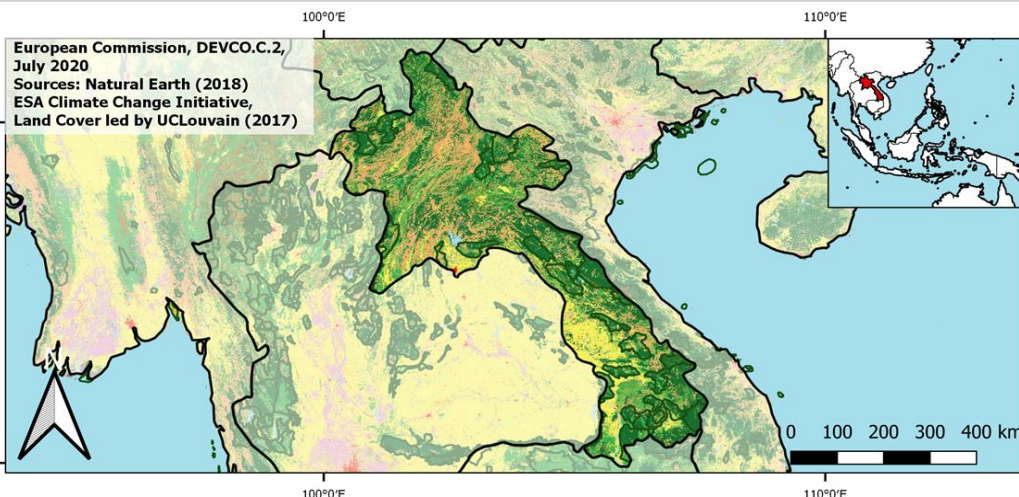
GDP per capita  
2.534,90 US\$ (2019)

Population living below 1,90 \$/day  
21,20 % in 2012

Human Development Index  
0,61 (2019, UN target: >0,8)

### Legend

- Main Protected Areas
- Land Cover Classes**
- Cropland rainfed
- Cropland irrigated
- Mosaic crops/nat.veg
- Tropical dense forest
- Deciduous forest
- Coniferous forest
- Mixed forest
- Shrubland
- Grassland
- Sparse vegetation
- Swamp forest
- Mangrove
- Swamps
- Urban areas
- Bare areas
- Water bodies
- Permanent snow and ice



Share of global emissions (2018)  
0,053%

### NDC: Mitigation Summary

(NDC from 2016)

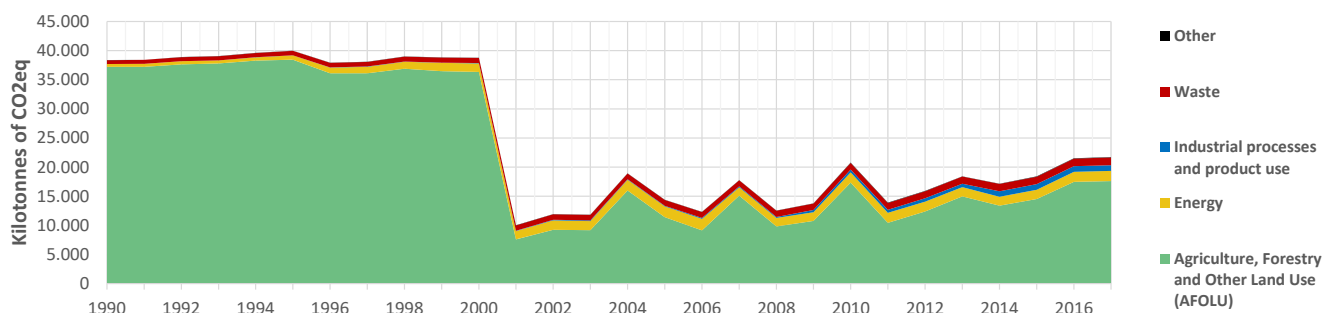
Lao proposes conditional mitigation measures in forestry (forest cover of 70% of land area by 2020), Energy (30% of renewable energy consumption by 2025; 90% rural electricity access by 2020; new hydroelectric plants) and transport.

### INTPA "NDC Group"

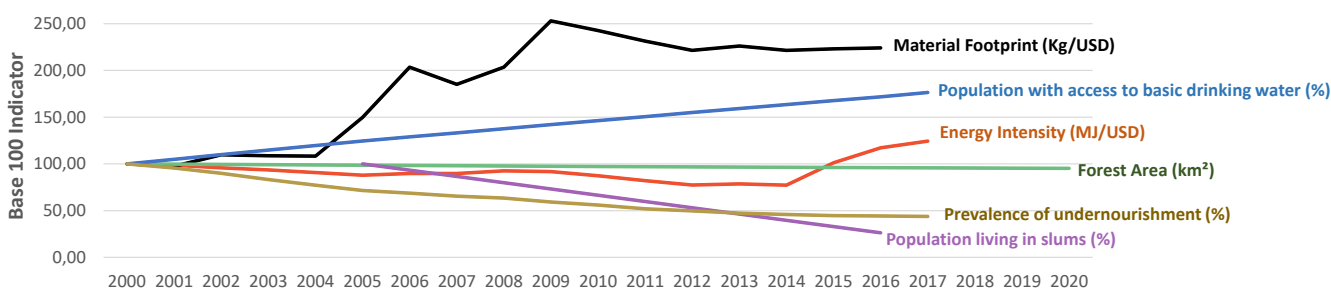
Group 3 - Suggested focus on adaptation for EU cooperation

Pillar	Indicator Name and Unit	Value	Interpretation
Green, circular and low-carbon economy	Ecological footprint (Consumption in global hectares per capita, 2017)	2 gh/cap	Above the global sustainable threshold of 1,6 gha per capita
	Recycling and composting rate (% of total solid waste, 2017)	6%	No or very low rate of recycling and composting (min EU MS = 7%)
	Water productivity (USD of GDP per m <sup>3</sup> of water extracted, 2017)	1,73 \$/m <sup>3</sup>	Highly inefficient use of water resources
	Material footprint (Kg of raw materials used per USD of GDP, 2010)	4,15 kg/\$	Highly resource-inefficient production and consumption practices
	Sustainable Consumption and Production Policy Framework (2017)	C2	No SCP policy instrument or coordination mechanism reported
	Change in emissions (production) vs change in GDP (2007-2017)	+42% / +299%	Relative decoupling: emissions increased, but slower than GDP
Biodiversity & Forests	Terrestrial protected areas (% of total land area, 2020)	16,59%	Further progress is needed to meet CBD Target of 17% by 2020
	Threatened species (% of total evaluated species, 2019)	9,10%	High share of threatened species, risk missing SDG target 15.5
	Population around protected areas (% total pop., 10km buffer, 2015)	33,63%	Important share of population - consider landscape approach
	Forest area change (% change between 2015 and 2020)	-1,03 %	SDG Target 15.2 not achieved (halt deforestation by 2020)
	Sustainable forest management (% area with long-term plan, 2020)	NA	No Data
	Employment in forestry (number of full-time equivalents, 2015)	NA	No Data
Green and Smart Cities	Proportion of urban population living in slums (% in 2016)	20,80%	Further efforts needed for SDG Target 11.1 (upgrade by 2030)
	Satisfaction with public transport (% satisfied, 2018)	65,62%	Medium satisfaction (UN SDSN interpretation)
	Solid waste uncollected or dumped in the open (% of total, 2017)	78%	Significant efforts are needed to meet SDG Target 11.6
	Wastewater receiving primary treatment (% of total)	0,00%	Significant efforts needed to ensure at least full primary treatment
	Urban air pollution (µg/m <sup>3</sup> of PM 2.5 particules, 2016)	25,5 µg/m <sup>3</sup>	Above EU 2020 target (18µg/m <sup>3</sup> ) but below US Standard (35µg/m <sup>3</sup> )
	Alignment of national DRR strategies to Sendai Framework (0-1 Score)	NA	No Data
Sustainable Energy	Access to electricity (% of population, 2018)	97,92%	Some efforts still needed to meet SDG Target 7.1 of 100% by 2030
	Renewable energy (% of total energy consumption, 2016)	51,93%	High share of renewables in total energy consumption
	Renewable electricity (% of electricity production, 2015)	86,37%	High share of renewable electricity
	Access to clean cooking (% of total population with access, 2018)	6,00%	Significant efforts needed for universal access to clean cooking
	Fossil fuel subsidies (% of GDP, 2015)	NA	No Data
	Energy Intensity (megajoules per constant 2011 PPP GDP, 2017)	5,41 MJ/\$	Energy Intensity above EU average, but still within range of EU MS
Food systems: from Farms to Forks	Rural poverty (% of rural population below 1\$90 a day, 2012)	28,00%	Further efforts needed to achieve SDG Target 1.1 (0% by 2030)
	Food security (% of population in food crisis or worse, 2019)	NA	No Data
	Nutrition (% of children under 5 who are stunted, 2017)	33,10%	Significant efforts needed to meet SDG Target 2.2 of 0% by 2030
	Fertilizer consumption (kg per hectare, 2016)	NA	No Data
	Land degradation (national area with declining productivity 1999-2013)	24,65%	Significant efforts needed to meet SDG Target 15.3 of 0% by 2030
	Agriculture and FOLU share of emissions (% of CO2eq in 2017)	81,08%	High share of emissions - Key sector for climate mitigation
Water & Oceans	Population using at least basic drinking water (% of pop., 2017)	82,06%	Further progress needed to meet SDG Target 6.1 (100% by 2030)
	Population using at least basic sanitation services (% of pop., 2017)	74,50%	Further progress needed to meet SDG Target 6.2 (100% by 2030)
	Water scarcity (m <sup>3</sup> of renewable freshwater per capita, 2014)	28952 m <sup>3</sup> /cap	Water shortages should be only irregular/local (>1700m <sup>3</sup> /capita)
	Water stress (water withdrawal as % of total available water, 2014)	1,39%	Low water stress (less than 25% of resource extraction)
	Marine protected areas (% of total marine area, 2020)	Landlocked	Indicator not relevant because the country is landlocked
	Fish stocks overexploited or collapsed (% of fish stocks, 2014)	Landlocked	Indicator not relevant because the country is landlocked

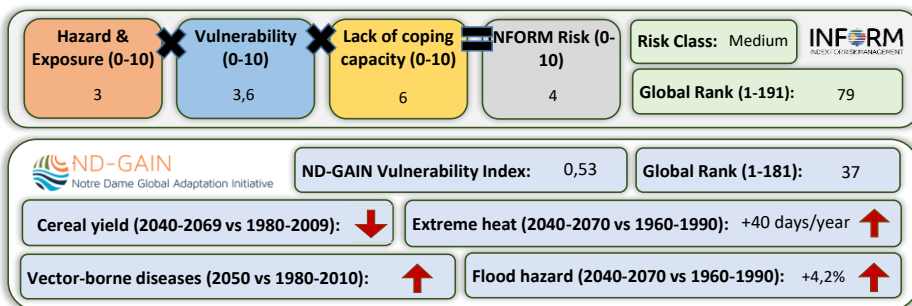
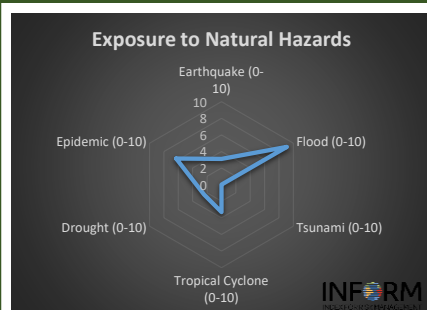
## Greenhouse Gas Emission History (Production-based)



## Historic Trends of selected indicators per Green Deal Pillar (Base 100)



## Climate Adaptation Needs



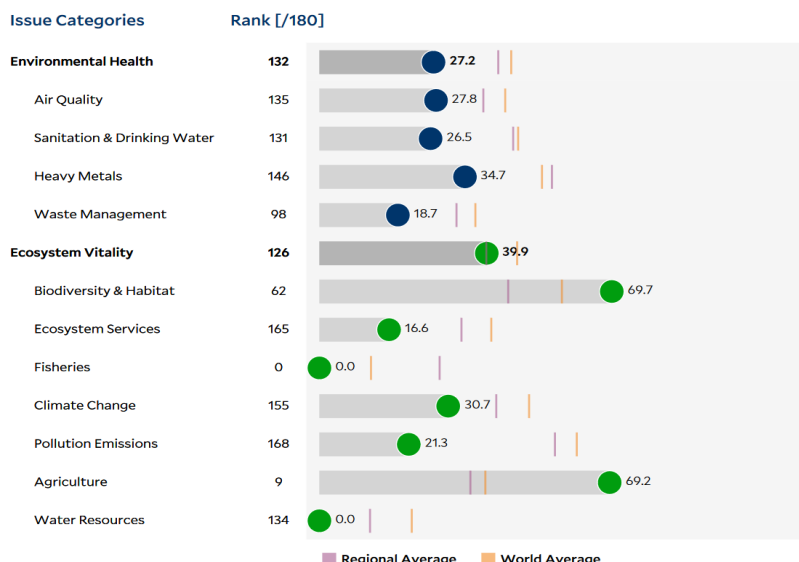
## Environmental Performance Index 2020

2020 EPI Country Rank (out of 180)

130

2020 EPI Score [0=worst, 100=best]

34,8



## SDG Index 2020

(UN SDSN & Bertelsmann Stiftung)

