



Green Deal Country Fiche

Guinea-Bissau

Population in 2019
1,92 million habitants

Projected population in 2050
3,56 million habitants

Surface
36,1 thousands km²

Population density (2019)
53 habitants per km²

GDP per capita
697,29 US\$ (2019)

Population living below 1,90 \$/day
68,40 % in 2010

Human Development Index
0,48 (2019, UN target: >0,8)

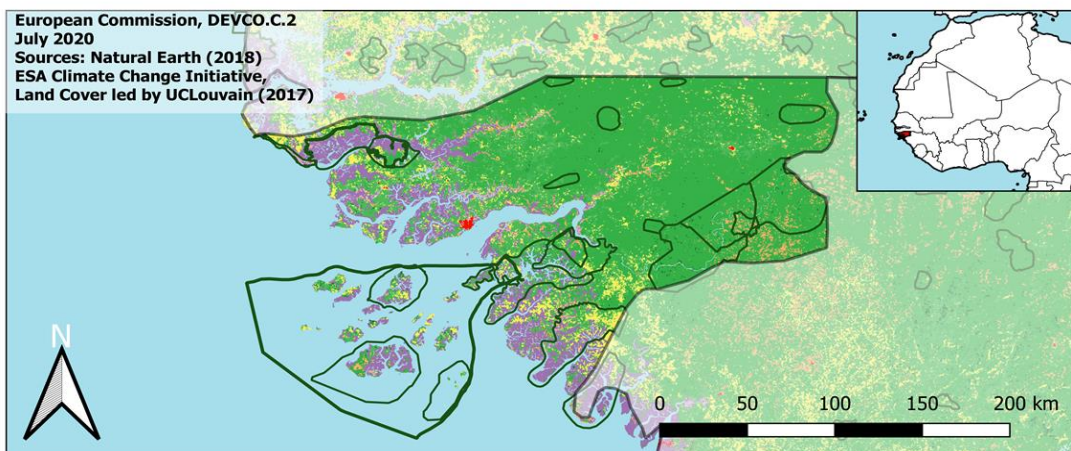
Legend

□ Main Protected Areas

Land Cover Classes

- Cropland rainfed
- Cropland irrigated
- Mosaic crops/nat.veg
- Tropical dense forest
- Deciduous forest
- Coniferous forest
- Mixed forest
- Shrubland
- Grassland
- Sparse vegetation
- Swamp forest
- Mangrove
- Swamps
- Urban areas
- Bare areas
- Water bodies
- Permanent snow and ice

European Commission, DEVCO.C.2
July 2020
Sources: Natural Earth (2018)
ESA Climate Change Initiative,
Land Cover led by UCLouvain (2017)



Share of global emissions (2018)
0,001%

NDC: Mitigation Summary

(NDC from 2018)

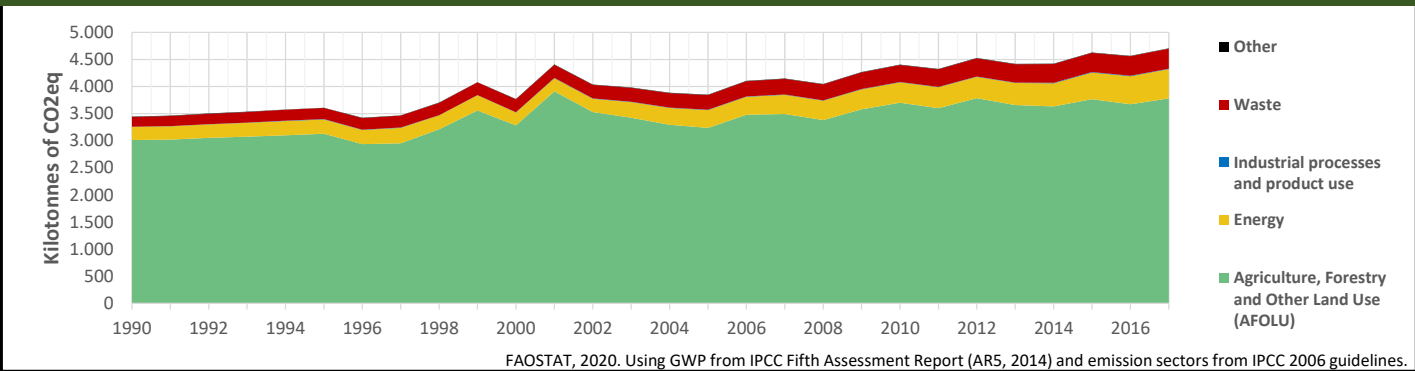
Guinea Bissau's mitigation contribution includes the implementation of policies and planned actions in forestry and energy sectors.

INTPA "NDC Group"

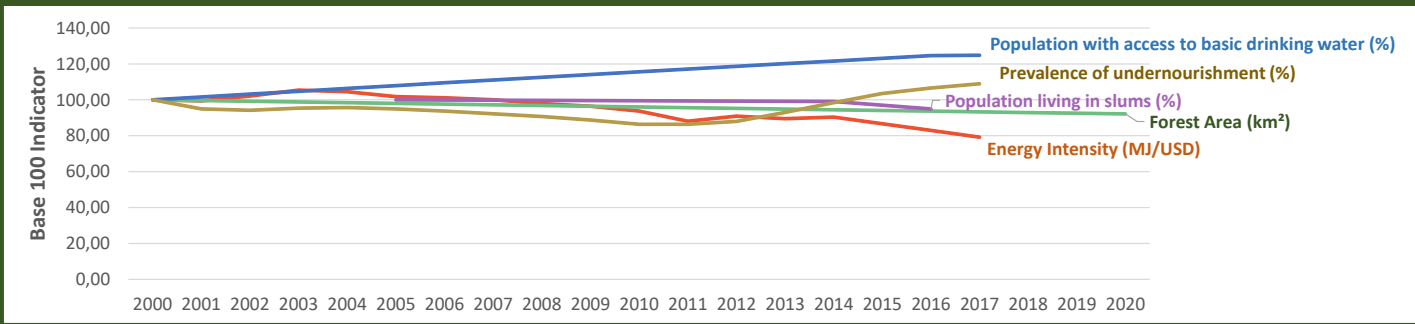
Group 3 - Suggested focus on adaptation for EU cooperation

Pillar	Indicator Name and Unit	Value	Interpretation
Green, circular and low-carbon economy	Ecological footprint (Consumption in global hectares per capita, 2017)	1,45 gh/cap	Within the global sustainable threshold of 1,6 gha per capita
	Recycling and composting rate (% of total solid waste, 2017)	NA	No Data
	Water productivity (USD of GDP per m³ of water extracted, 2005)	2,14 \$/m³	Highly inefficient use of water resources
	Material footprint (Kg of raw materials used per USD of GDP, 2010)	NA	No Data
	Sustainable Consumption and Production Policy Framework (2017)	D	No policy framework for SCP has been reported to the UN
Biodiversity & Forests	Change in emissions (production) vs change in GDP (2007-2017)	+13% / +94%	Relative decoupling: emissions increased, but slower than GDP
	Terrestrial protected areas (% of total land area, 2020)	16,71%	Further progress is needed to meet CBD Target of 17% by 2020
	Threatened species (% of total evaluated species, 2019)	4,38%	Medium share of threatened species, risk missing SDG target 15.5
	Population around protected areas (% total pop., 10km buffer, 2015)	13,06%	Important share of population - consider landscape approach
	Forest area change (% change between 2015 and 2020)	-2,09 %	SDG Target 15.2 not achieved (halt deforestation by 2020)
Green and Smart Cities	Sustainable forest management (% area with long-term plan, 2020)	1,31%	Significant efforts needed to meet SDG Target 15.2 (100% by 2020)
	Employment in forestry (number of full-time equivalents, 2015)	NA	No Data
	Proportion of urban population living in slums (% in 2016)	78,90%	Significant efforts needed for SDG Target 11.1 (upgrade by 2030)
	Satisfaction with public transport (% satisfied, 2018)	NA	No Data
	Solid waste uncollected or dumped in the open (% of total, 2017)	NA	No Data
Sustainable Energy	Wastewater receiving primary treatment (% of total)	0,00%	Significant efforts needed to ensure at least full primary treatment
	Urban air pollution (µg/m³ of PM 2.5 particules, 2016)	26,49 µg/m³	Above EU 2020 target (18µg/m³) but below US Standard (35µg/m³)
	Alignment of national DRR strategies to Sendai Framework (0-1 Score)	NA	No Data
	Access to electricity (% of population, 2018)	28,66%	Significant efforts needed to meet SDG Target 7.1 of 100% by 2030
	Renewable energy (% of total energy consumption, 2016)	86,45%	High share of renewables in total energy consumption
Food systems: from Farms to Forks	Renewable electricity (% of electricity production, 2015)	0,00%	Very low share of renewables, low contribution to SDG Target 7.2
	Access to clean cooking (% of total population with access, 2018)	5,10%	Significant efforts needed for universal access to clean cooking
	Fossil fuel subsidies (% of GDP, 2015)	NA	No Data
	Energy Intensity (megajoules per constant 2011 PPP GDP, 2017)	10,82 MJ/\$	Energy Intensity is above all EU-27 MS values
	Rural poverty (% of rural population below \$190 a day, 2010)	74,90%	Significant efforts needed to achieve SDG Target 1.1 (0% by 2030)
Water & Oceans	Food security (% of population in food crisis or worse, 2019)	10,00%	Progress is still needed to meet SDG Target 2.1 of 0% by 2030
	Nutrition (% of children under 5 who are stunted, 2014)	27,60%	Significant efforts needed to meet SDG Target 2.2 of 0% by 2030
	Fertilizer consumption (kg per hectare, 2016)	NA	No Data
	Land degradation (national area with declining productivity 1999-2013)	3,58%	Progress is still needed to meet SDG Target 15.3 of 0% by 2030
	Agriculture and FOLU share of emissions (% of CO2eq in 2017)	80,31%	High share of emissions - Key sector for climate mitigation
Water & Oceans	Population using at least basic drinking water (% of pop., 2017)	66,63%	Further progress needed to meet SDG Target 6.1 (100% by 2030)
	Population using at least basic sanitation services (% of pop., 2017)	20,50%	Significant efforts needed to meet SDG Target 6.2 (100% by 2030)
	Water scarcity (m³ of renewable freshwater per capita, 2014)	9271 m³/cap	Water shortages should be only irregular/local (>1700m³/capita)
	Water stress (water withdrawal as % of total available water, 2014)	0,71%	Low water stress (less than 25% of resource extraction)
	Marine protected areas (% of total marine area, 2020)	13,69%	Aichi Target 11 of the CBD has been met for marine ecosystems
	Fish stocks overexploited or collapsed (% of fish stocks, 2014)	54,07%	SDG Target 14.4 (0% by 2020) not met, significant efforts needed

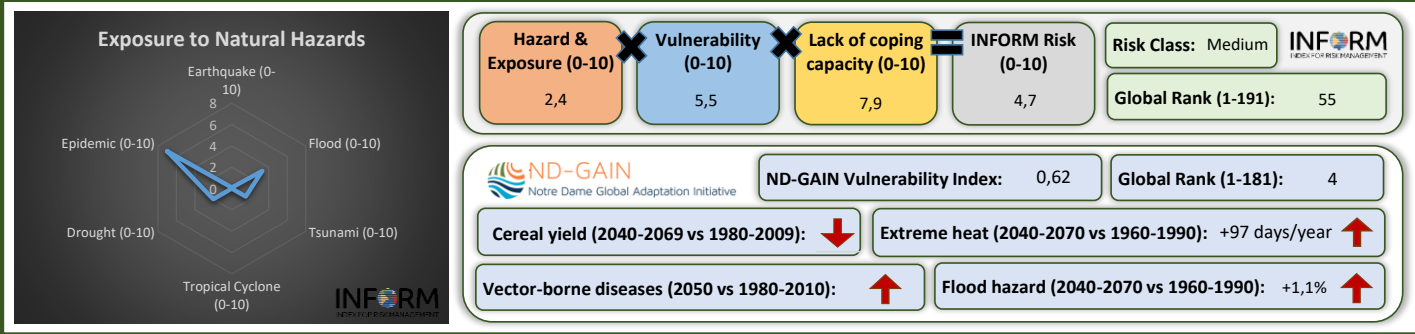
Greenhouse Gas Emission History (Production-based)



Historic Trends of selected indicators per Green Deal Pillar (Base 100)



Climate Adaptation Needs



Environmental Performance Index 2020

2020 EPI Country Rank (out of 180)

161

2020 EPI Score [0=worst, 100=best]

29,1

Issue Categories

Rank [/180]

Environmental Health

174

Air Quality

159

Sanitation & Drinking Water

172

Heavy Metals

162

Waste Management

133

Ecosystem Vitality

133

Biodiversity & Habitat

56

Ecosystem Services

153

Fisheries

129

Climate Change

145

Pollution Emissions

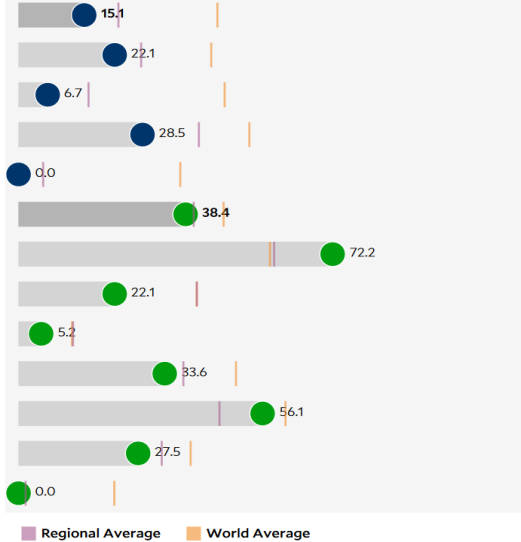
96

Agriculture

131

Water Resources

134



SDG Index 2020

(UN SDSN & Bertelsmann Stiftung)



Legend:

- SDG achieved
- Challenges remain
- Significant challenges remain
- Major challenges remain
- Information unavailable