



## Green Deal Country Fiche

### Guatemala

**Population in 2019**  
16,60 million habitants

**Projected population in 2050**  
25,39 million habitants

**Surface**  
108,9 thousands km²

**Population density (2019)**  
152 habitants per km²

**GDP per capita**  
4.619,99 US\$ (2019)

**Population living below 1,90 \$/day**  
8,80 % in 2014

**Human Development Index**  
0,66 (2019, UN target: >0,8)

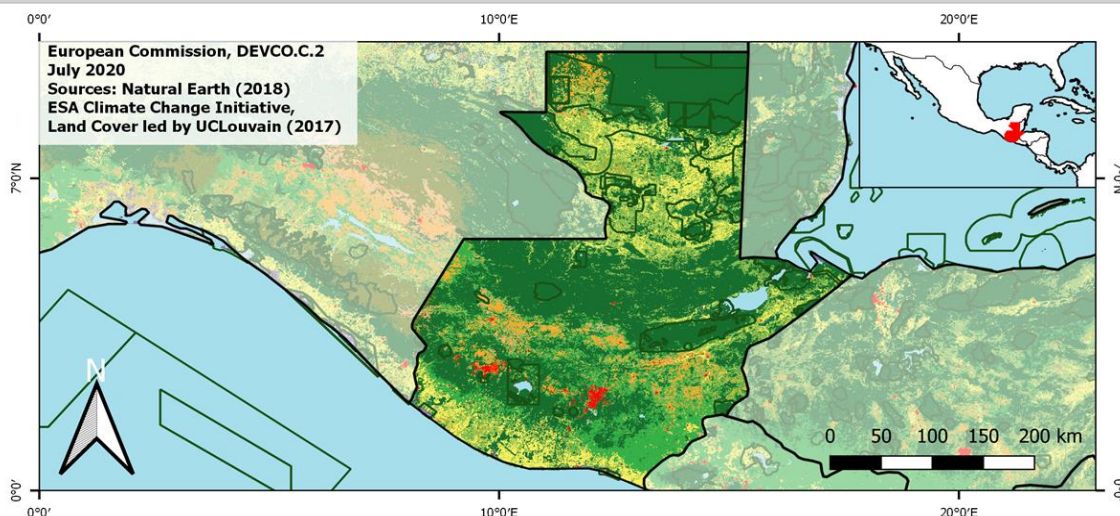
#### Legend

□ Main Protected Areas

#### Land Cover Classes

- Cropland rainfed
- Cropland irrigated
- Mosaic crops/nat.veg
- Tropical dense forest
- Deciduous forest
- Coniferous forest
- Mixed forest
- Shrubland
- Grassland
- Sparse vegetation
- Swamp forest
- Mangrove
- Swamps
- Urban areas
- Bare areas
- Water bodies
- Permanent snow and ice

European Commission, DEVCO.C.2  
July 2020  
Sources: Natural Earth (2018)  
ESA Climate Change Initiative,  
Land Cover led by UCLouvain (2017)



**Share of global emissions (2018)**  
0,050%

#### NDC: Mitigation Summary

(NDC from 2017)

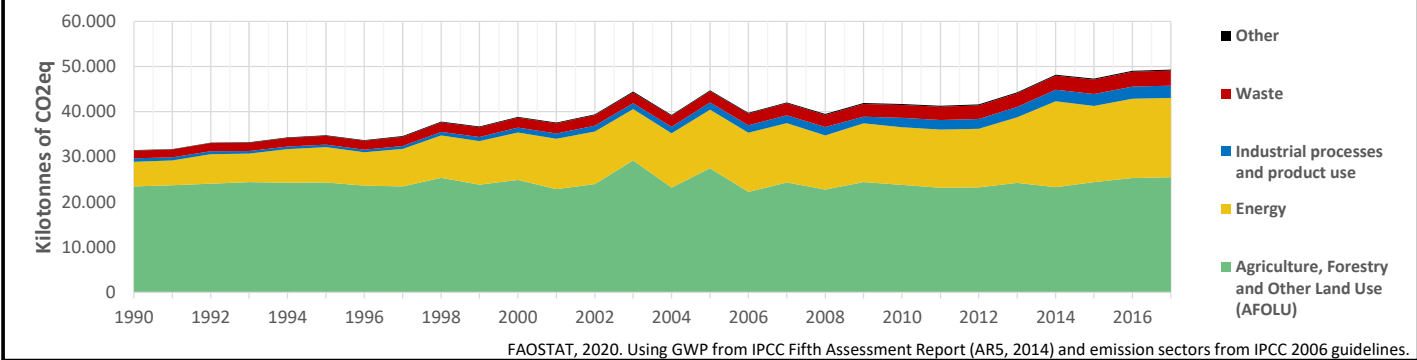
Guatemala aims to reduce its GHG emissions by 22.6% (incl. 11.2% unconditional) from BAU by 2030. Focus sectors : energy, land use, LULUCF, agriculture, waste and industrial processes.

#### INTPA "NDC Group"

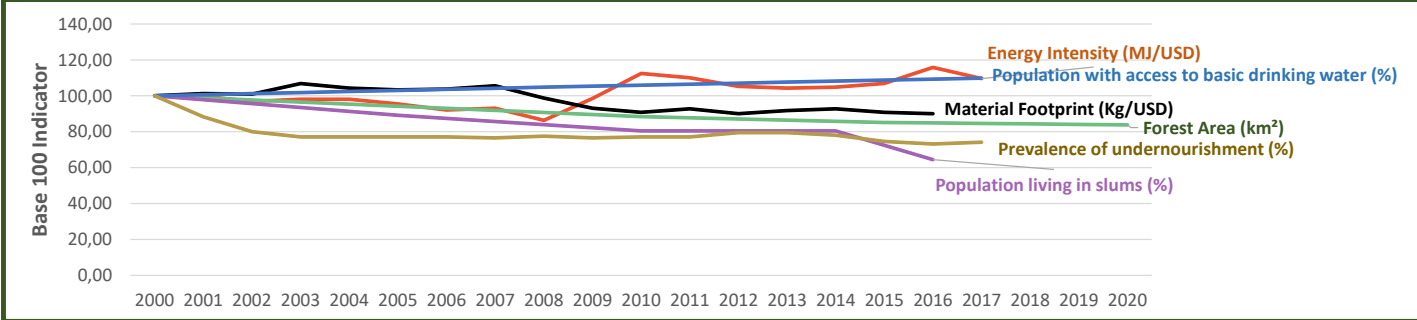
Group 3 - Suggested focus on adaptation for EU cooperation

Pillar	Indicator Name and Unit	Value	Interpretation
Green, circular and low-carbon economy	<b>Ecological footprint</b> (Consumption in global hectares per capita, 2017)	1,78 gh/cap	Above the global sustainable threshold of 1,6 gha per capita
	<b>Recycling and composting rate</b> (% of total solid waste, 2017)	<5%	No or very low rate of recycling and composting (min EU MS = 7%)
	<b>Water productivity</b> (USD of GDP per m³ of water extracted, 2016)	17,89 \$/m³	Less water efficient than EU average, but within range of EU MS
	<b>Material footprint</b> (Kg of raw materials used per USD of GDP, 2010)	1,07 kg/\$	Larger footprint than EU average (0,97), but within range of EU MS
	<b>Sustainable Consumption and Production Policy Framework</b> (2017)	D	No policy framework for SCP has been reported to the UN
	<b>Change in emissions (production) vs change in GDP</b> (2007-2017)	+25% / +122%	Relative decoupling: emissions increased, but slower than GDP
Biodiversity & Forests	<b>Terrestrial protected areas</b> (% of total land area, 2020)	20,02%	CBD Target has been met for terrestrial ecosystems (17% by 2020)
	<b>Threatened species</b> (% of total evaluated species, 2019)	10,96%	High share of threatened species, risk missing SDG target 15.5
	<b>Population around protected areas</b> (% total pop., 10km buffer, 2015)	67,91%	Very significant share of population - Landscape approach is key
	<b>Forest area change</b> (% change between 2015 and 2020)	-1,62 %	SDG Target 15.2 not achieved (halt deforestation by 2020)
	<b>Sustainable forest management</b> (% area with long-term plan, 2020)	0,09%	Significant efforts needed to meet SDG Target 15.2 (100% by 2020)
	<b>Employment in forestry</b> (number of full-time equivalents, 2015)	63100 FTE	Significant sector for employment (1,03% total labor force in 2015)
Green and Smart Cities	<b>Proportion of urban population living in slums</b> (% in 2016)	31,00%	Further efforts needed for SDG Target 11.1 (upgrade by 2030)
	<b>Satisfaction with public transport</b> (% satisfied, 2018)	73,37%	High satisfaction with public transport (UN SDSN interpretation)
	<b>Solid waste uncollected or dumped in the open</b> (% of total, 2017)	78%	Significant efforts are needed to meet SDG Target 11.6
	<b>Wastewater receiving primary treatment</b> (% of total)	20,00%	Significant efforts needed to ensure at least full primary treatment
	<b>Urban air pollution</b> (µg/m³ of PM 2.5 particules, 2016)	24,23 µg/m³	Above EU 2020 target (18µg/m³) but below US Standard (35µg/m³)
	<b>Alignment of national DRR strategies to Sendai Framework</b> (0-1, 2018)	0,90	Substantial alignment with the Sendai Framework (1)
Sustainable Energy	<b>Access to electricity</b> (% of population, 2018)	94,70%	Some efforts still needed to meet SDG Target 7.1 of 100% by 2030
	<b>Renewable energy</b> (% of total energy consumption, 2016)	63,08%	High share of renewables in total energy consumption
	<b>Renewable electricity</b> (% of electricity production, 2015)	60,39%	High share of renewable electricity
	<b>Access to clean cooking</b> (% of total population with access, 2018)	45,70%	Significant efforts needed for universal access to clean cooking
	<b>Fossil fuel subsidies</b> (% of GDP, 2015)	0,24%	Within the range of subsidy shares from EU-27 MS
	<b>Energy Intensity</b> (megajoules per constant 2011 PPP GDP, 2017)	4,57 MJ/\$	Energy Intensity above EU average, but still within range of EU MS
Food systems: from Farms to Forks	<b>Rural poverty</b> (% of rural population below \$190 a day, 2014)	13,20%	Further efforts needed to achieve SDG Target 1.1 (0% by 2030)
	<b>Food security</b> (% of population in food crisis or worse, 2019)	18,00%	Progress is still needed to meet SDG Target 2.1 of 0% by 2030
	<b>Nutrition</b> (% of children under 5 who are stunted, 2015)	46,70%	Significant efforts needed to meet SDG Target 2.2 of 0% by 2030
	<b>Fertilizer consumption</b> (kg per hectare, 2016)	303,15 kg/ha	Among top 25% of countries with most intensive fertilizer use
	<b>Land degradation</b> (national area with declining productivity 1999-2013)	8,08%	Progress is still needed to meet SDG Target 15.3 of 0% by 2030
	<b>Agriculture and FOLU share of emissions</b> (% of CO2eq in 2017)	51,69%	High share of emissions - Key sector for climate mitigation
Water & Oceans	<b>Population using at least basic drinking water</b> (% of pop., 2017)	94,19%	Further progress needed to meet SDG Target 6.1 (100% by 2030)
	<b>Population using at least basic sanitation services</b> (% of pop., 2017)	65,10%	Further progress needed to meet SDG Target 6.2 (100% by 2030)
	<b>Water scarcity</b> (m³ of renewable freshwater per capita, 2014)	6858 m³/cap	Water shortages should be only irregular/local (>1700m³/capita)
	<b>Water stress</b> (water withdrawal as % of total available water, 2014)	3,76%	Low water stress (less than 25% of resource extraction)
	<b>Marine protected areas</b> (% of total marine area, 2020)	0,92%	Significant efforts needed to achieve CBD Target of 10% by 2020
	<b>Fish stocks overexploited or collapsed</b> (% of fish stocks, 2014)	15,00%	SDG Target 14.4 of 0% by 2020 not met, progress still needed

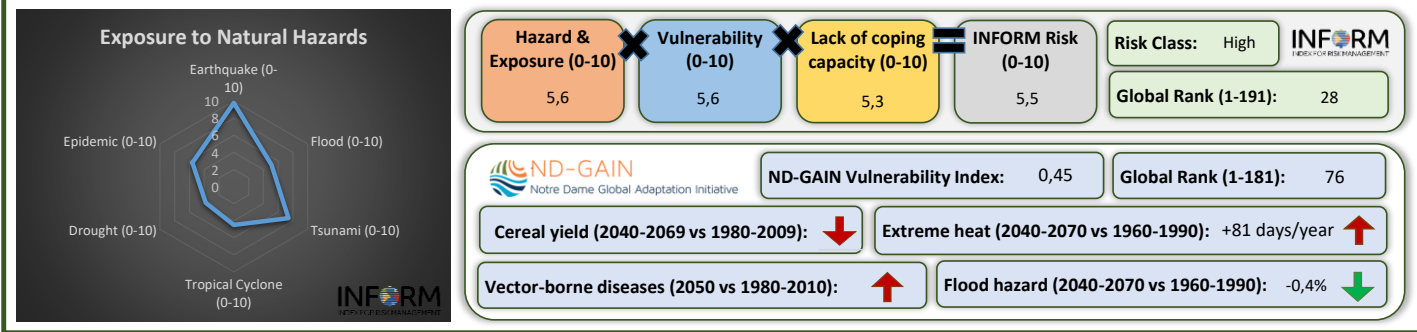
## Greenhouse Gas Emission History (Production-based)



## Historic Trends of selected indicators per Green Deal Pillar (Base 100)



## Climate Adaptation Needs



## Environmental Performance Index 2020

2020 EPI Country Rank (out of 180)

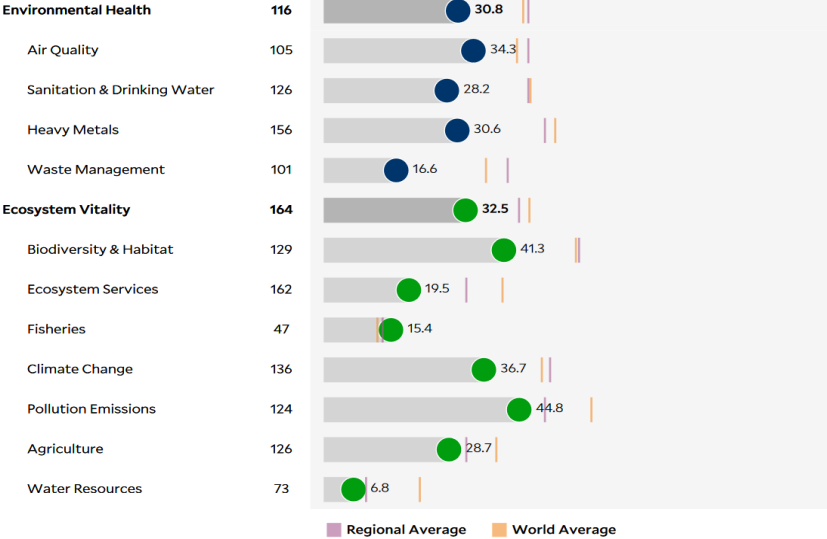
149

2020 EPI Score [0=worst, 100=best]

31,8

### Issue Categories

Rank [1/180]



## SDG Index 2020

(UN SDSN & Bertelsmann Stiftung)



### Legend:

- SDG achieved
- Challenges remain
- Significant challenges remain
- Major challenges remain
- Information unavailable