



Green Deal Country Fiche

Grenada

Population in 2019
0,11 million habitants

Projected population in 2050
0,12 million habitants

Surface
0,3 thousands km²

Population density (2019)
373 habitants per km²

GDP per capita
10.808,67 US\$ (2019)

Population living below 1,90 \$/day
NA

Human Development Index
0,78 (2019, UN target: >0,8)

Legend

□ Main Protected Areas

Land Cover Classes

■ Cropland rainfed

■ Cropland irrigated

■ Mosaic crops/nat.veg

■ Tropical dense forest

■ Deciduous forest

■ Coniferous forest

■ Mixed forest

■ Shrubland

■ Grassland

■ Sparse vegetation

■ Swamp forest

■ Mangrove

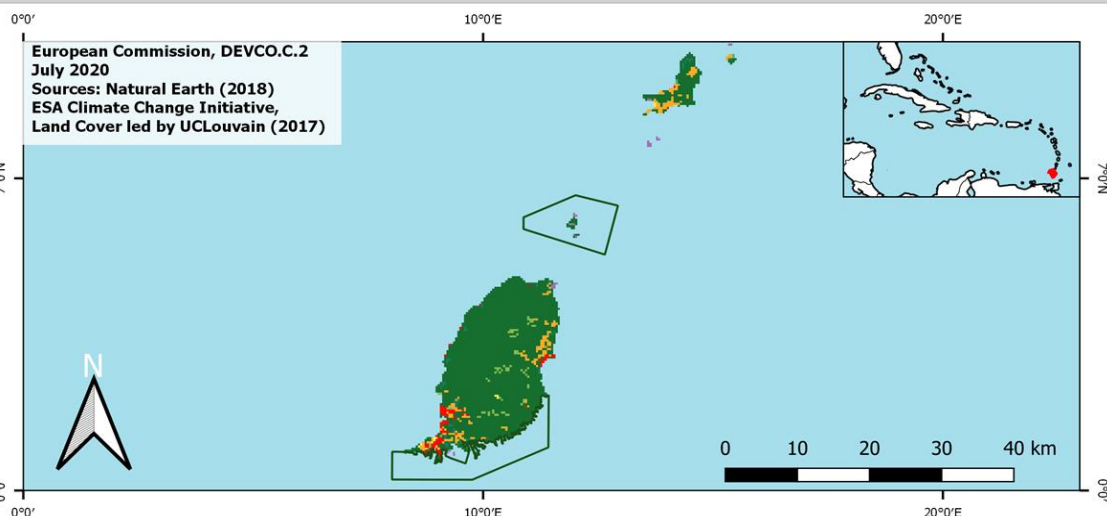
■ Swamps

■ Urban areas

■ Bare areas

■ Water bodies

■ Permanent snow and ice



Share of global emissions (2018)
0,001%

NDC: Mitigation Summary

(NDC from 2020)

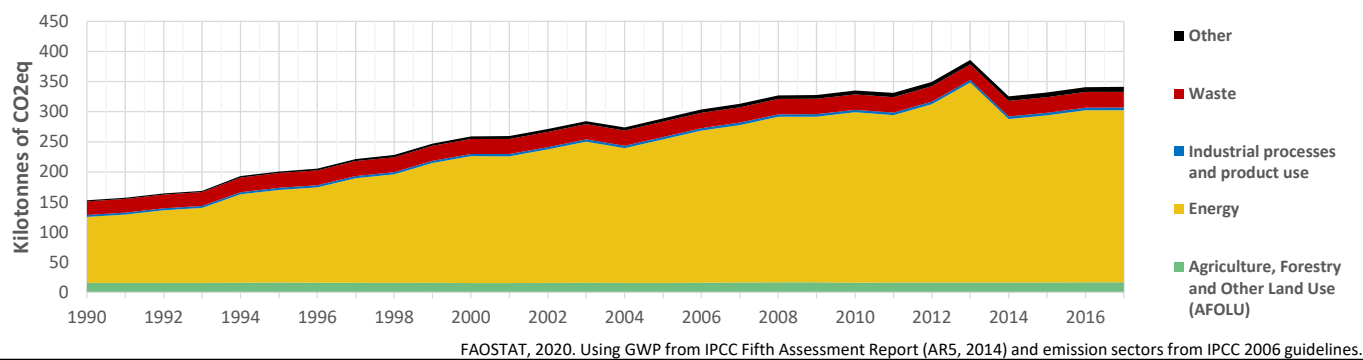
Grenada conditionally aspires to reduce its GHG emissions by 40% below the 2010 emissions levels (which were estimated at 0.217 Mt CO2eq) in 2030. Actions focus on energy, forestry and waste for an overall cost estimated at approximatively USD 1 billion .

INTPA "NDC Group"

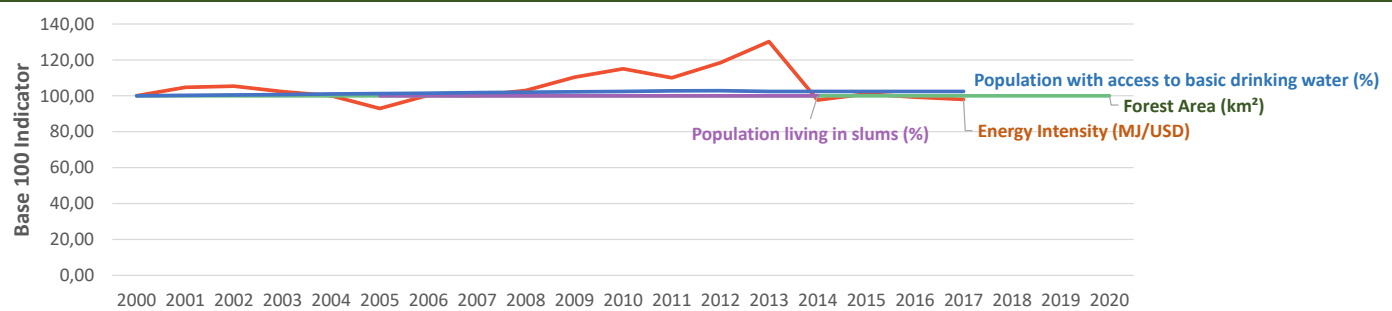
Group 3 - Suggested focus on adaptation for EU cooperation

Pillar	Indicator Name and Unit	Value	Interpretation
Green, circular and low-carbon economy	Ecological footprint (Consumption in global hectares per capita, 2017)	2,76 gh/cap	Above the global sustainable threshold of 1,6 gha per capita
	Recycling and composting rate (% of total solid waste, 2017)	<5%	No or very low rate of recycling and composting (min EU MS = 7%)
	Water productivity (USD of GDP per m³ of water extracted, 2014)	59,84 \$/m³	Less water efficient than EU average, but within range of EU MS
	Material footprint (Kg of raw materials used per USD of GDP, 2010)	NA	No Data
	Sustainable Consumption and Production Policy Framework (2017)	D	No policy framework for SCP has been reported to the UN
	Change in emissions (production) vs change in GDP (2007-2017)	+7% / +49%	Relative decoupling: emissions increased, but slower than GDP
Biodiversity & Forests	Terrestrial protected areas (% of total land area, 2020)	10,40%	Significant efforts are needed to meet CBD Target of 17% by 2020
	Threatened species (% of total evaluated species, 2019)	3,90%	Further conservation efforts needed to secure SDG Target 15.5
	Population around protected areas (% total pop., 10km buffer, 2015)	81,06%	Very significant share of population - Landscape approach is key
	Forest area change (% change between 2015 and 2020)	0 %	Forest cover at equilibrium, SDG Target 15.2 achieved
	Sustainable forest management (% area with long-term plan, 2020)	NA	No Data
	Employment in forestry (number of full-time equivalents, 2015)	NA	No Data
Green and Smart Cities	Proportion of urban population living in slums (% in 2016)	6,00%	SDG Target 11.1 not yet met, but in range of EU MS values
	Satisfaction with public transport (% satisfied, 2018)	NA	No Data
	Solid waste uncollected or dumped in the open (% of total, 2017)	0%	SDG Target 11.6 has been achieved
	Wastewater receiving primary treatment (% of total)	9,66%	Significant efforts needed to ensure at least full primary treatment
	Urban air pollution (µg/m³ of PM 2.5 particules, 2016)	21,77 µg/m³	Above EU 2020 target (18µg/m³) but below US Standard (35µg/m³)
	Alignment of national DRR strategies to Sendai Framework (0-1 Score)	NA	No Data
Sustainable Energy	Access to electricity (% of population, 2018)	95,29%	Some efforts still needed to meet SDG Target 7.1 of 100% by 2030
	Renewable energy (% of total energy consumption, 2016)	11,17%	Low share, increases needed to contribute to SDG Target 7.2
	Renewable electricity (% of electricity production, 2015)	0,00%	Very low share of renewables, low contribution to SDG Target 7.2
	Access to clean cooking (% of total population with access, 2016)	>95%	Universal access to clean cooking has been achieved
	Fossil fuel subsidies (% of GDP, 2015)	0,48%	Within the range of subsidy shares from EU-27 MS
	Energy Intensity (megajoules per constant 2011 PPP GDP, 2017)	2,92 MJ/\$	Energy Intensity within range of EU-MS, below the EU-27 average
Food systems: from Farms to Forks	Rural poverty (% of rural population below 1\$90 a day, 2018)	NA	No Data
	Food security (% of population in food crisis or worse, 2019)	NA	No Data
	Nutrition (% of children under 5 who are stunted, 2019)	NA	No Data
	Fertilizer consumption (kg per hectare, 2016)	NA	No Data
	Land degradation (national area with declining productivity 1999-2013)	0,00%	SDG Target 15.3 has been achieved
	Agriculture and FOLU share of emissions (% of CO2eq in 2017)	4,89%	Low emission shares from Agriculture, Forestry and Other Land Use
Water & Oceans	Population using at least basic drinking water (% of pop., 2017)	95,63%	Some progress still needed to meet SDG Target 6.1 (100% by 2030)
	Population using at least basic sanitation services (% of pop., 2017)	91,50%	Further progress needed to meet SDG Target 6.2 (100% by 2030)
	Water scarcity (m³ of renewable freshwater per capita, 2014)	1880 m³/cap	Water shortages should be only irregular/local (>1700m³/capita)
	Water stress (water withdrawal as % of total available water, 2014)	7,05%	Low water stress (less than 25% of resource extraction)
	Marine protected areas (% of total marine area, 2020)	0,09%	Significant efforts needed to achieve CBD Target of 10% by 2020
	Fish stocks overexploited or collapsed (% of fish stocks, 2014)	No Data	No Data

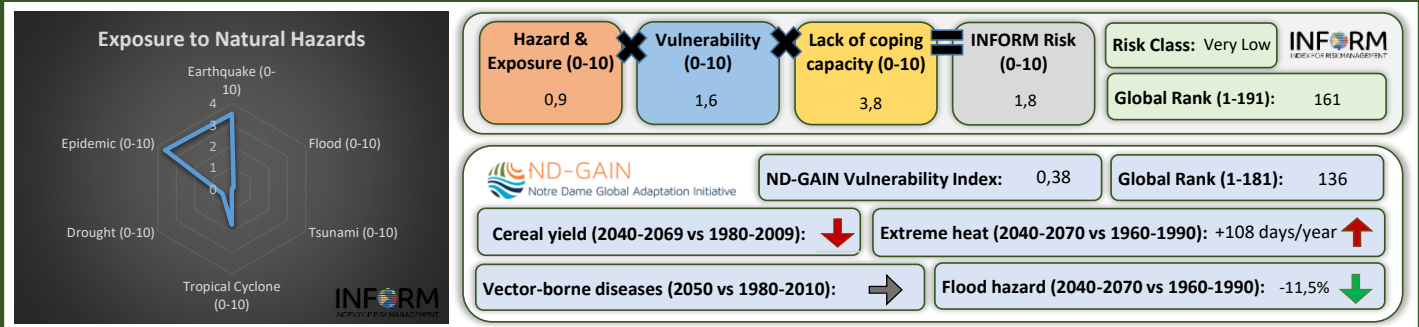
Greenhouse Gas Emission History (Production-based)



Historic Trends of selected indicators per Green Deal Pillar (Base 100)



Climate Adaptation Needs



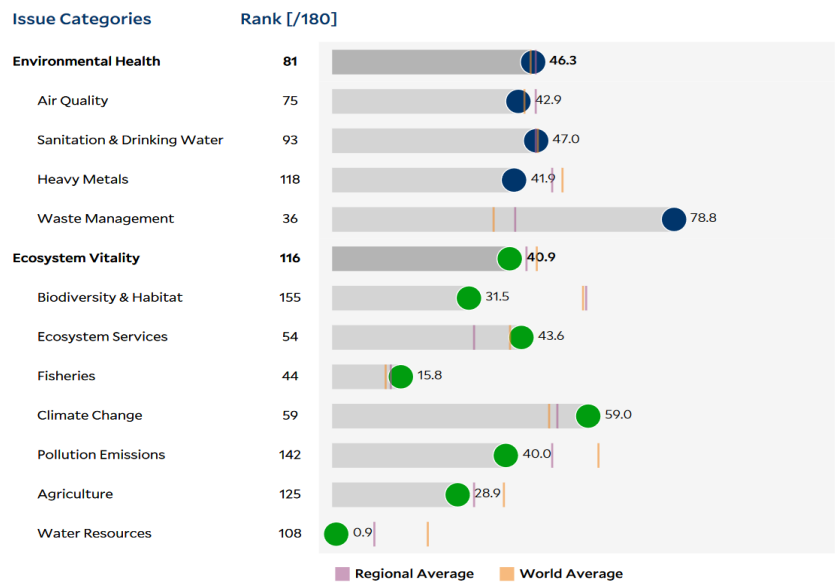
Environmental Performance Index 2020

2020 EPI Country Rank (out of 180)

95

2020 EPI Score [0=worst, 100=best]

43,1



SDG Index 2020

(UN SDSN & Bertelsmann Stiftung)

