



## Green Deal Country Fiche

### Gambia

**Population in 2019**  
2,35 million habitants

**Projected population in 2050**  
4,88 million habitants

**Surface**  
11,3 thousands km²

**Population density (2019)**  
208 habitants per km²

**GDP per capita**  
777,81 US\$ (2019)

**Population living below 1,90 \$/day**  
10,30 % in 2015

**Human Development Index**  
0,50 (2019, UN target: >0,8)

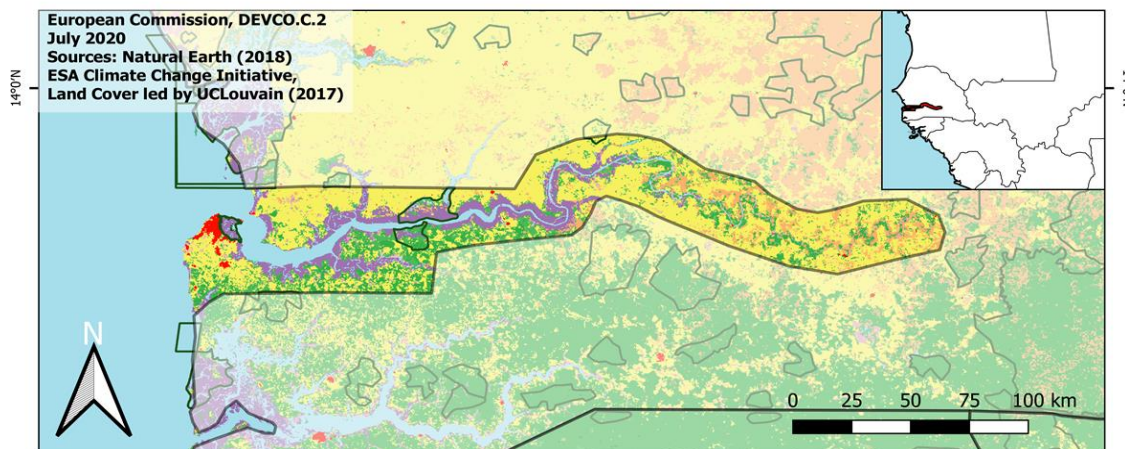
#### Legend

□ Main Protected Areas

#### Land Cover Classes

- Cropland rainfed
- Cropland irrigated
- Mosaic crops/nat.veg
- Tropical dense forest
- Deciduous forest
- Coniferous forest
- Mixed forest
- Shrubland
- Grassland
- Sparse vegetation
- Swamp forest
- Mangrove
- Swamps
- Urban areas
- Bare areas
- Water bodies
- Permanent snow and ice

European Commission, DEVCO.C.2  
July 2020  
Sources: Natural Earth (2018)  
ESA Climate Change Initiative,  
Land Cover led by UCLouvain (2017)



**Share of global emissions (2018)**  
0,002%

#### NDC: Mitigation Summary

(NDC from 2016)

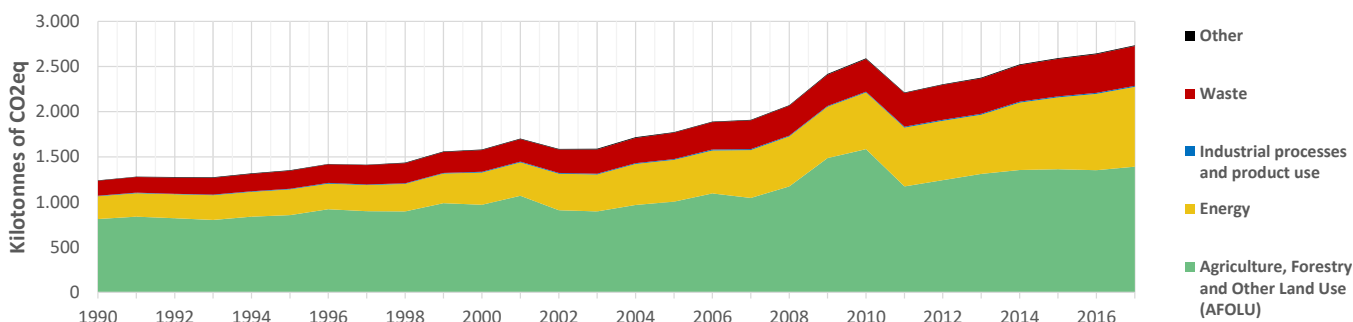
Gambia commits to unconditional reductions in afforestation and renewable energy, and conditional reductions in agriculture, energy, transport and waste. Overall, the emissions reduction goal is of 45.4% by 2030 in a low emissions scenario excluding LULUCF

#### INTPA "NDC Group"

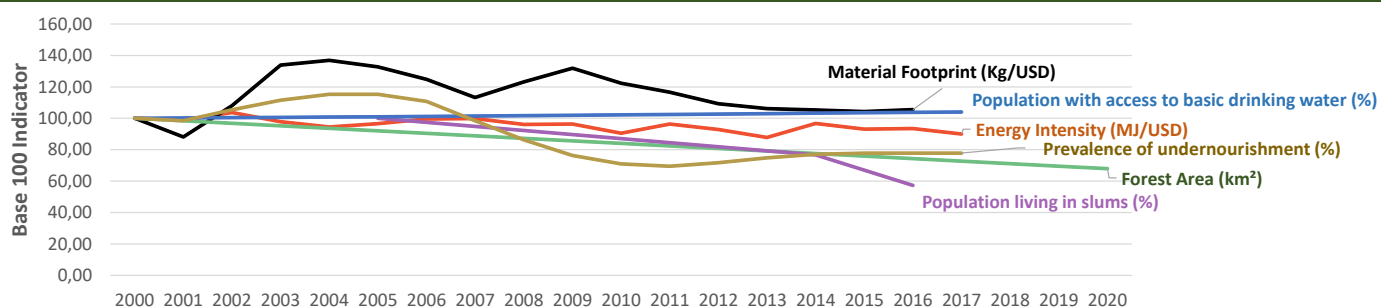
Group 3 - Suggested focus on adaptation for EU cooperation

Pillar	Indicator Name and Unit	Value	Interpretation
Green, circular and low-carbon economy	<b>Ecological footprint</b> (Consumption in global hectares per capita, 2017)	0,93 gh/cap	Within the global sustainable threshold of 1,6 gha per capita
	<b>Recycling and composting rate</b> (% of total solid waste, 2017)	NA	No Data
	<b>Water productivity</b> (USD of GDP per m³ of water extracted, 2009)	7,68 \$/m³	Low water productivity (minimum EU MS value : 10 \$/m³)
	<b>Material footprint</b> (Kg of raw materials used per USD of GDP, 2010)	4,46 kg/\$	Highly resource-inefficient production and consumption practices
	<b>Sustainable Consumption and Production Policy Framework</b> (2017)	D	No policy framework for SCP has been reported to the UN
Biodiversity & Forests	<b>Change in emissions (production) vs change in GDP</b> (2007-2017)	+30% / +18%	Unsustainable growth path: emissions are growing faster than GDP
	<b>Terrestrial protected areas</b> (% of total land area, 2020)	4,32%	Significant efforts are needed to meet CBD Target of 17% by 2020
	<b>Threatened species</b> (% of total evaluated species, 2019)	4,31%	Medium share of threatened species, risk missing SDG target 15.5
	<b>Population around protected areas</b> (% total pop., 10km buffer, 2015)	59,61%	Very significant share of population - Landscape approach is key
	<b>Forest area change</b> (% change between 2015 and 2020)	-10,57 %	SDG Target 15.2 not achieved (halt deforestation by 2020)
Green and Smart Cities	<b>Sustainable forest management</b> (% area with long-term plan, 2020)	38,85%	Significant efforts needed to meet SDG Target 15.2 (100% by 2020)
	<b>Employment in forestry</b> (number of full-time equivalents, 2015)	260 FTE	Low share of total employment (<0,5% of total labor force in 2015)
	<b>Proportion of urban population living in slums</b> (% in 2016)	26,00%	Further efforts needed for SDG Target 11.1 (upgrade by 2030)
	<b>Satisfaction with public transport</b> (% satisfied, 2018)	45,56%	Medium satisfaction (UN SDSN interpretation)
	<b>Solid waste uncollected or dumped in the open</b> (% of total, 2017)	NA	No Data
Sustainable Energy	<b>Wastewater receiving primary treatment</b> (% of total)	3,72%	Significant efforts needed to ensure at least full primary treatment
	<b>Urban air pollution</b> (µg/m³ of PM 2.5 particules, 2016)	32,32 µg/m³	Above EU 2020 target (18µg/m³) but below US Standard (35µg/m³)
	<b>Alignment of national DRR strategies to Sendai Framework</b> (0-1, 2018)	0,38	Limited alignment with the Sendai Framework (0 to < 0,5)
	<b>Access to electricity</b> (% of population, 2018)	60,30%	Further efforts still needed to meet SDG Target 7.1 of 100% by 2030
	<b>Renewable energy</b> (% of total energy consumption, 2016)	51,33%	High share of renewables in total energy consumption
Food systems: from Farms to Forks	<b>Renewable electricity</b> (% of electricity production, 2015)	0,00%	Very low share of renewables, low contribution to SDG Target 7.2
	<b>Access to clean cooking</b> (% of total population with access, 2018)	10,70%	Significant efforts needed for universal access to clean cooking
	<b>Fossil fuel subsidies</b> (% of GDP, 2015)	NA	No Data
	<b>Energy Intensity</b> (megajoules per constant 2011 PPP GDP, 2017)	4,42 MJ/\$	Energy Intensity above EU average, but still within range of EU MS
	<b>Rural poverty</b> (% of rural population below \$190 a day, 2015)	20,00%	Further efforts needed to achieve SDG Target 1.1 (0% by 2030)
Water & Oceans	<b>Food security</b> (% of population in food crisis or worse, 2019)	10,00%	Progress is still needed to meet SDG Target 2.1 of 0% by 2030
	<b>Nutrition</b> (% of children under 5 who are stunted, 2018)	13,60%	Significant efforts needed to meet SDG Target 2.2 of 0% by 2030
	<b>Fertilizer consumption</b> (kg per hectare, 2016)	1,24 kg/ha	Below lowest EU MS value (60 kg/ha in Romania)
	<b>Land degradation</b> (national area with declining productivity 1999-2013)	4,06%	Progress is still needed to meet SDG Target 15.3 of 0% by 2030
	<b>Agriculture and FOLU share of emissions</b> (% of CO2eq in 2017)	50,88%	High share of emissions - Key sector for climate mitigation
	<b>Population using at least basic drinking water</b> (% of pop., 2017)	77,99%	Further progress needed to meet SDG Target 6.1 (100% by 2030)
	<b>Population using at least basic sanitation services</b> (% of pop., 2017)	39,20%	Significant efforts needed to meet SDG Target 6.2 (100% by 2030)
	<b>Water scarcity</b> (m³ of renewable freshwater per capita, 2014)	1564 m³/cap	Water shortages may appear regularly
	<b>Water stress</b> (water withdrawal as % of total available water, 2014)	1,45%	Low water stress (less than 25% of resource extraction)
	<b>Marine protected areas</b> (% of total marine area, 2020)	0,12%	Significant efforts needed to achieve CBD Target of 10% by 2020
	<b>Fish stocks overexploited or collapsed</b> (% of fish stocks, 2014)	No Data	No Data

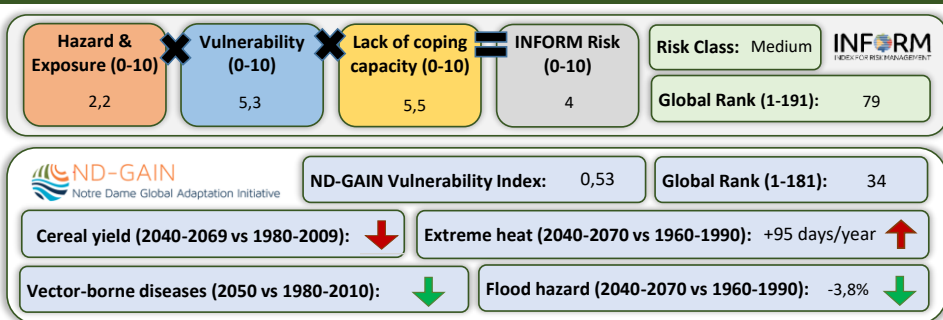
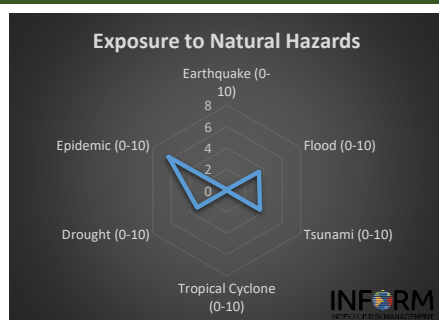
## Greenhouse Gas Emission History (Production-based)



## Historic Trends of selected indicators per Green Deal Pillar (Base 100)



## Climate Adaptation Needs



## Environmental Performance Index 2020

2020 EPI Country Rank (out of 180)

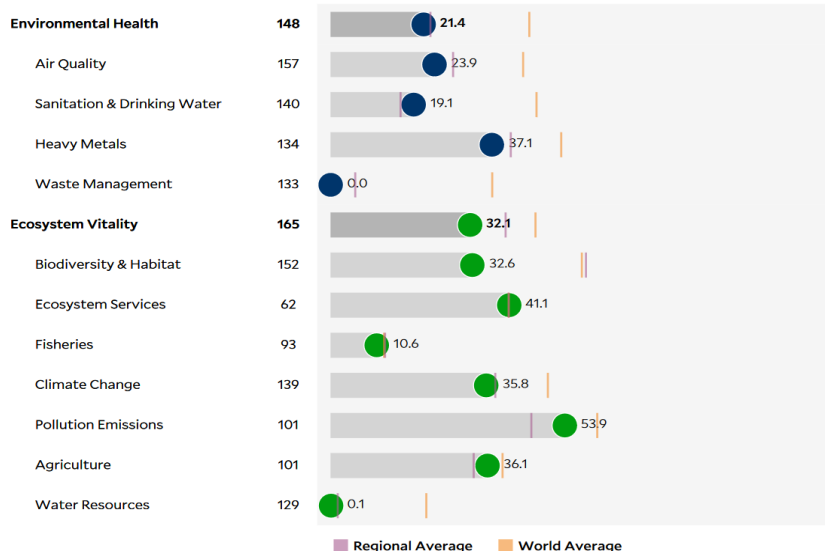
166

2020 EPI Score [0=worst, 100=best]

27,9

### Issue Categories

Rank [1/180]



## SDG Index 2020

(UN SDSN & Bertelsmann Stiftung)



### Legend:

- SDG achieved
- Challenges remain
- Significant challenges remain
- Major challenges remain
- Information unavailable