



## Green Deal Country Fiche

### Ethiopia

**Population in 2019**  
112,08 million habitants

**Projected population in 2050**  
205,41 million habitants

**Surface**  
1.104,3 thousands km²

**Population density (2019)**  
101 habitants per km²

**GDP per capita**  
855,76 US\$ (2019)

**Population living below 1,90 \$/day**  
32,60 % in 2015

**Human Development Index**  
0,49 (2019, UN target: >0,8)

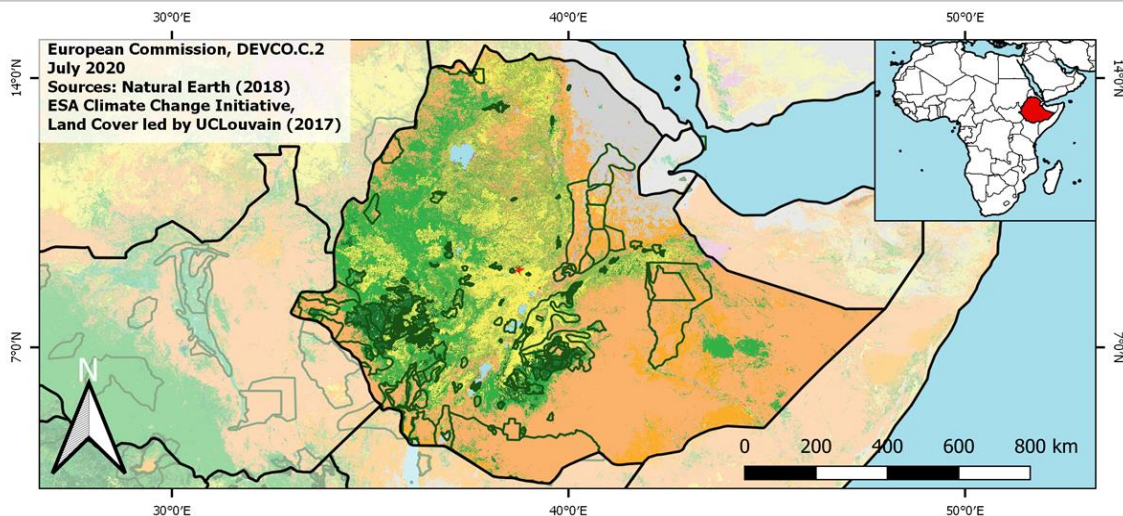
#### Legend

□ Main Protected Areas

#### Land Cover Classes

- Cropland rainfed
- Cropland irrigated
- Mosaic crops/nat.veg
- Tropical dense forest
- Deciduous forest
- Coniferous forest
- Mixed forest
- Shrubland
- Grassland
- Sparse vegetation
- Swamp forest
- Mangrove
- Swamps
- Urban areas
- Bare areas
- Water bodies
- Permanent snow and ice

European Commission, DEVCO.C.2  
July 2020  
Sources: Natural Earth (2018)  
ESA Climate Change Initiative,  
Land Cover led by UCLouvain (2017)



**Share of global emissions (2018)**  
0,041%

#### NDC: Mitigation Summary

(NDC from 2020)

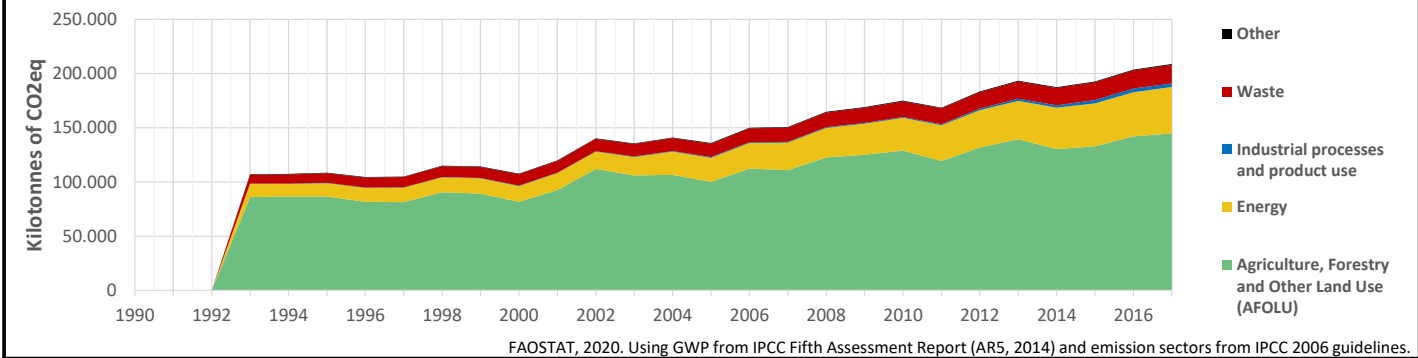
Ethiopia unconditionally commits to reduce its GHG emissions by 12.4% in 2030 below BAU. Conditionally, this could go up to 41.1% (ie going below 242.8 Mt CO<sub>2</sub>eq in 2030). The cost of mitigating actions is estimated at USD 281.33 billion (80% conditional).

#### INTPA "NDC Group"

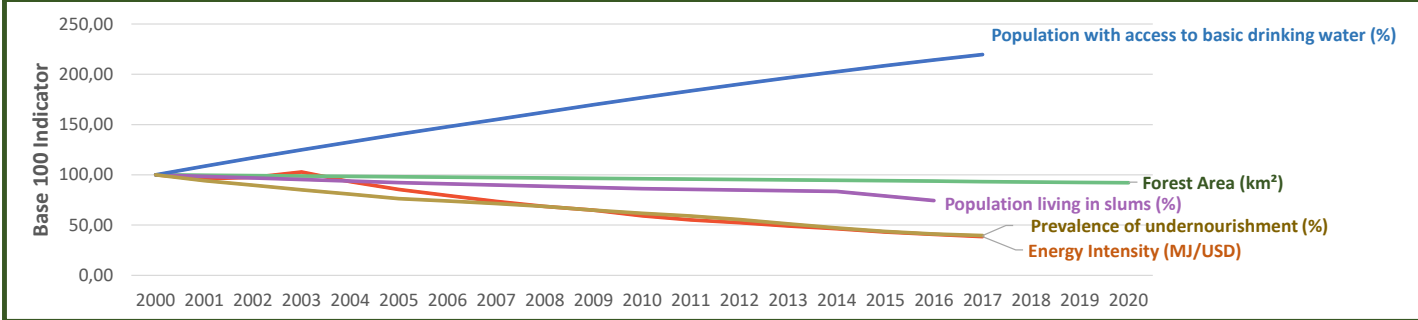
Group 3 - Suggested focus on adaptation for EU cooperation

Pillar	Indicator Name and Unit	Value	Interpretation
Green, circular and low-carbon economy	Ecological footprint (Consumption in global hectares per capita, 2017)	1,01 gh/cap	Within the global sustainable threshold of 1,6 gha per capita
	Recycling and composting rate (% of total solid waste, 2017)	NA	No Data
	Water productivity (USD of GDP per m³ of water extracted, 2014)	3,16 \$/m³	Highly inefficient use of water resources
	Material footprint (Kg of raw materials used per USD of GDP, 2010)	NA	No Data
	Sustainable Consumption and Production Policy Framework (2017)	C3	No SCP macro policy or coordination mechanism reported
	Change in emissions (production) vs change in GDP (2007-2017)	+33% / +315%	Relative decoupling: emissions increased, but slower than GDP
Biodiversity & Forests	Terrestrial protected areas (% of total land area, 2020)	17,58%	CBD Target has been met for terrestrial ecosystems (17% by 2020)
	Threatened species (% of total evaluated species, 2019)	7,20%	High share of threatened species, risk missing SDG target 15.5
	Population around protected areas (% total pop., 10km buffer, 2015)	6,70%	Small proportion of the population living around protected areas
	Forest area change (% change between 2015 and 2020)	-2,09 %	SDG Target 15.2 not achieved (halt deforestation by 2020)
	Sustainable forest management (% area with long-term plan, 2020)	NA	No Data
	Employment in forestry (number of full-time equivalents, 2015)	NA	No Data
Green and Smart Cities	Proportion of urban population living in slums (% in 2016)	65,90%	Significant efforts needed for SDG Target 11.1 (upgrade by 2030)
	Satisfaction with public transport (% satisfied, 2018)	43,85%	Medium satisfaction (UN SDSN interpretation)
	Solid waste uncollected or dumped in the open (% of total, 2017)	NA	No Data
	Wastewater receiving primary treatment (% of total)	0,00%	Significant efforts needed to ensure at least full primary treatment
	Urban air pollution (µg/m³ of PM 2.5 particles, 2016)	33,97 µg/m³	Above EU 2020 target (18µg/m³) but below US Standard (35µg/m³)
	Alignment of national DRR strategies to Sendai Framework (0-1, 2018)	0,75	Substantial alignment with the Sendai Framework (1)
Sustainable Energy	Access to electricity (% of population, 2018)	44,98%	Significant efforts needed to meet SDG Target 7.1 of 100% by 2030
	Renewable energy (% of total energy consumption, 2016)	91,86%	High share of renewables in total energy consumption
	Renewable electricity (% of electricity production, 2015)	99,96%	High share of renewable electricity
	Access to clean cooking (% of total population with access, 2018)	7,20%	Significant efforts needed for universal access to clean cooking
	Fossil fuel subsidies (% of GDP, 2015)	1,21%	Among the Top 35 countries with >1% GDP spent on FF subsidies
	Energy Intensity (megajoules per constant 2011 PPP GDP, 2017)	9,66 MJ/\$	Energy Intensity is above all EU-27 MS values
Food systems: from Farms to Forks	Rural poverty (% of rural population below 1\$90 a day, 2015)	34,90%	Significant efforts needed to achieve SDG Target 1.1 (0% by 2030)
	Food security (% of population in food crisis or worse, 2019)	27,00%	Significant efforts needed to meet SDG Target 2.1 of 0% by 2030
	Nutrition (% of children under 5 who are stunted, 2019)	36,80%	Significant efforts needed to meet SDG Target 2.2 of 0% by 2030
	Fertilizer consumption (kg per hectare, 2016)	14,43 kg/ha	Below lowest EU MS value (60 kg/ha in Romania)
	Land degradation (national area with declining productivity 1999-2013)	29,18%	Significant efforts needed to meet SDG Target 15.3 of 0% by 2030
	Agriculture and FOLU share of emissions (% of CO <sub>2</sub> eq in 2017)	69,32%	High share of emissions - Key sector for climate mitigation
Water & Oceans	Population using at least basic drinking water (% of pop., 2017)	41,06%	Significant efforts needed to meet SDG Target 6.1 (100% by 2030)
	Population using at least basic sanitation services (% of pop., 2017)	7,30%	Significant efforts needed to meet SDG Target 6.2 (100% by 2030)
	Water scarcity (m³ of renewable freshwater per capita, 2014)	1253 m³/cap	Water shortages may appear regularly
	Water stress (water withdrawal as % of total available water, 2014)	11,60%	Low water stress (less than 25% of resource extraction)
	Marine protected areas (% of total marine area, 2020)	Landlocked	Indicator not relevant because the country is landlocked
	Fish stocks overexploited or collapsed (% of fish stocks, 2014)	Landlocked	Indicator not relevant because the country is landlocked

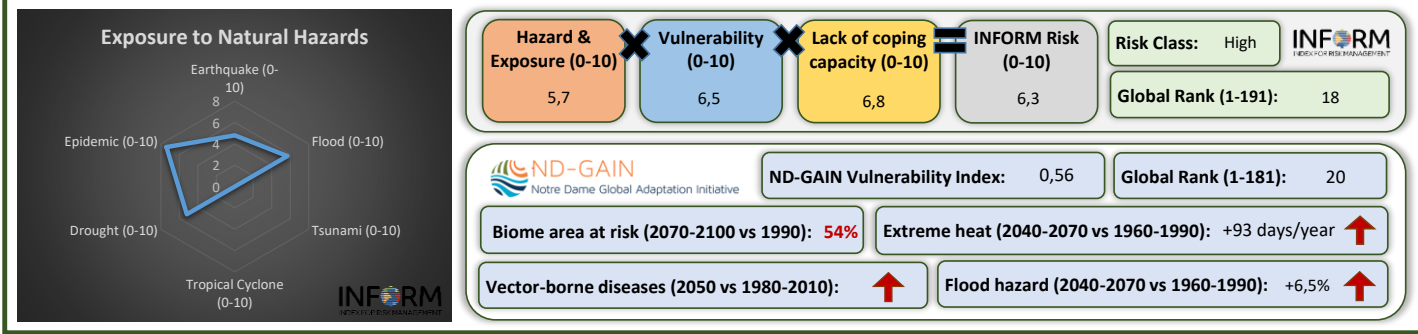
## Greenhouse Gas Emission History (Production-based)



## Historic Trends of selected indicators per Green Deal Pillar (Base 100)



## Climate Adaptation Needs



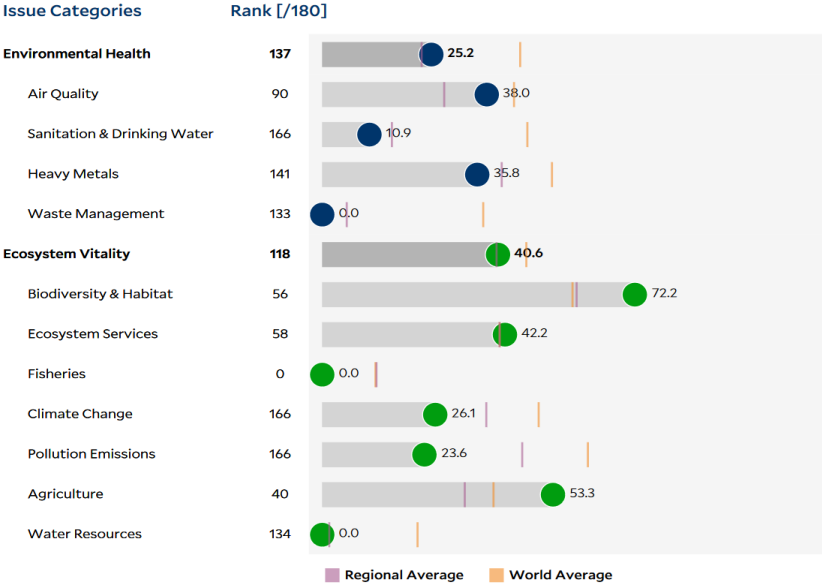
## Environmental Performance Index 2020

2020 EPI Country Rank (out of 180)

134

2020 EPI Score [0=worst, 100=best]

34,4



## SDG Index 2020

(UN SDSN & Bertelsmann Stiftung)

