



## Green Deal Country Fiche

### Ecuador

**Population in 2019**  
17,37 million habitants

**Projected population in 2050**  
23,32 million habitants

**Surface**  
256,4 thousands km<sup>2</sup>

**Population density (2019)**  
68 habitants per km<sup>2</sup>

**GDP per capita**  
6.183,82 US\$ (2019)

**Population living below 1,90 \$/day**  
3,30 % in 2018

**Human Development Index**  
0,76 (2019, UN target: >0,8)

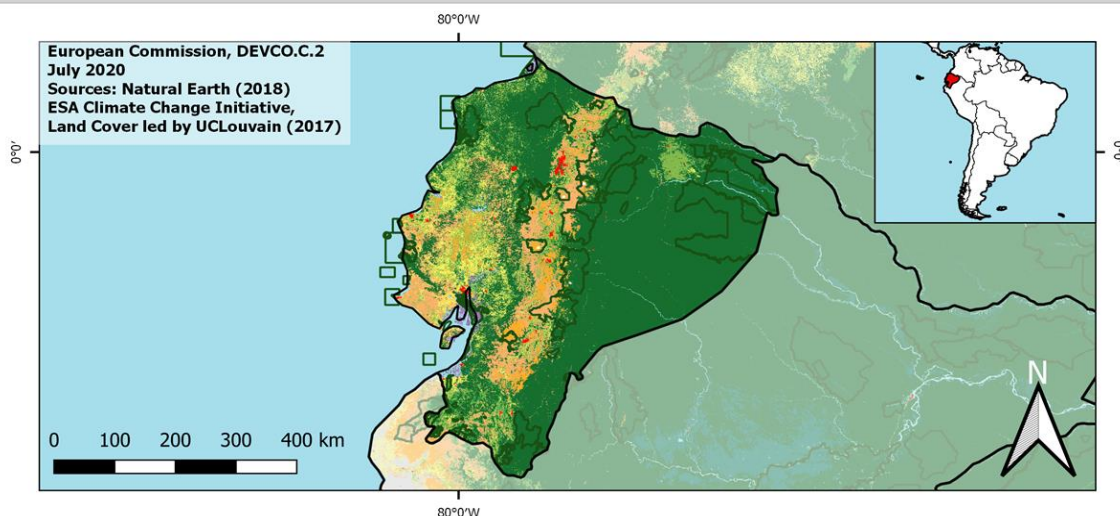
#### Legend

□ Main Protected Areas

#### Land Cover Classes

- Cropland rainfed
- Cropland irrigated
- Mosaic crops/nat.veg
- Tropical dense forest
- Deciduous forest
- Coniferous forest
- Mixed forest
- Shrubland
- Grassland
- Sparse vegetation
- Swamp forest
- Mangrove
- Swamps
- Urban areas
- Bare areas
- Water bodies
- Permanent snow and ice

European Commission, DEVCO.C.2  
July 2020  
Sources: Natural Earth (2018)  
ESA Climate Change Initiative,  
Land Cover led by UCLouvain (2017)



**Share of global emissions (2018)**  
0,115%

#### NDC: Mitigation Summary

(NDC from 2019)

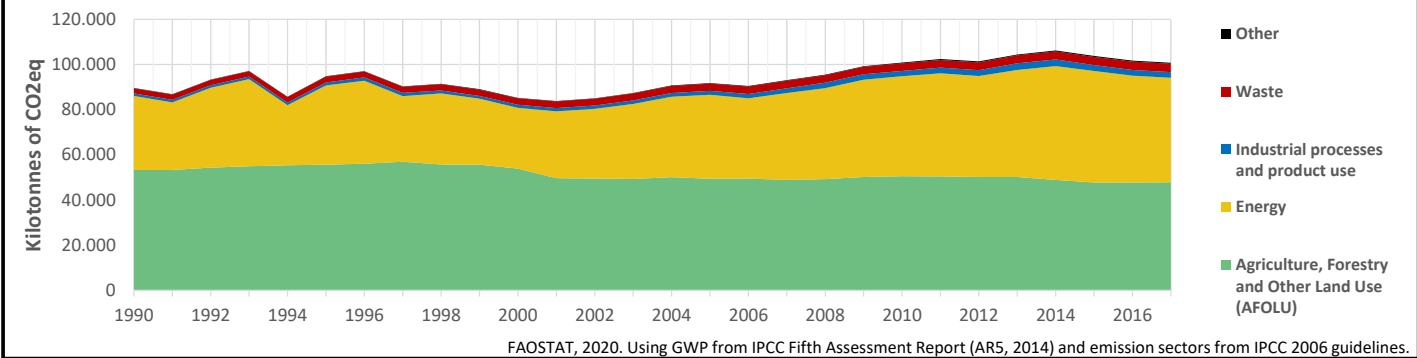
Ecuador commits to mitigation actions in Energy, Agriculture, Industrial Processes, Waste, Land Use, Land Use Change and Forestry sectors.

#### INTPA "NDC Group"

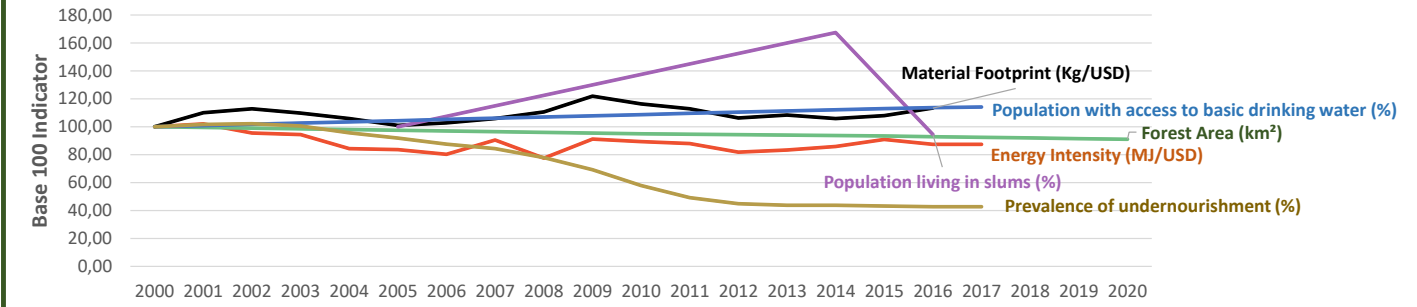
Group 3 - Suggested focus on adaptation for EU cooperation

Pillar	Indicator Name and Unit	Value	Interpretation
Green, circular and low-carbon economy	<b>Ecological footprint</b> (Consumption in global hectares per capita, 2017)	1,71 gh/cap	Above the global sustainable threshold of 1,6 gha per capita
	<b>Recycling and composting rate</b> (% of total solid waste, 2017)	10-20%	Low recycling and composting rate (overall EU-27 value = 45%)
	<b>Water productivity</b> (USD of GDP per m <sup>3</sup> of water extracted, 2017)	8,76 \$/m <sup>3</sup>	Low water productivity (minimum EU MS value : 10 \$/m <sup>3</sup> )
	<b>Material footprint</b> (Kg of raw materials used per USD of GDP, 2010)	1,87 kg/\$	Larger footprint than EU average (0,97), but within range of EU MS
	<b>Sustainable Consumption and Production Policy Framework</b> (2017)	C3	No SCP macro policy or coordination mechanism reported
	<b>Change in emissions</b> (production) <b>vs change in GDP</b> (2007-2017)	+8% / +104%	Relative decoupling: emissions increased, but slower than GDP
Biodiversity & Forests	<b>Terrestrial protected areas</b> (% of total land area, 2020)	21,75%	CBD Target has been met for terrestrial ecosystems (17% by 2020)
	<b>Threatened species</b> (% of total evaluated species, 2019)	27,46%	High share of threatened species, risk missing SDG target 15.5
	<b>Population around protected areas</b> (% total pop., 10km buffer, 2015)	32,28%	Important share of population - consider landscape approach
	<b>Forest area change</b> (% change between 2015 and 2020)	-2,51 %	SDG Target 15.2 not achieved (halt deforestation by 2020)
	<b>Sustainable forest management</b> (% area with long-term plan, 2020)	45,91%	Significant efforts needed to meet SDG Target 15.2 (100% by 2020)
	<b>Employment in forestry</b> (number of full-time equivalents, 2015)	NA	No Data
Green and Smart Cities	<b>Proportion of urban population living in slums</b> (% in 2016)	20,30%	Further efforts needed for SDG Target 11.1 (upgrade by 2030)
	<b>Satisfaction with public transport</b> (% satisfied, 2018)	73,93%	High satisfaction with public transport (UN SDSN interpretation)
	<b>Solid waste uncollected or dumped in the open</b> (% of total, 2017)	30-50%	Further efforts are needed to meet SDG Target 11.6
	<b>Wastewater receiving primary treatment</b> (% of total)	0,00%	Significant efforts needed to ensure at least full primary treatment
	<b>Urban air pollution</b> (µg/m <sup>3</sup> of PM 2.5 particules, 2016)	15,54 µg/m <sup>3</sup>	Within EU 2020 target (18µg/m <sup>3</sup> ), above WHO guideline (10µg/m <sup>3</sup> )
	<b>Alignment of national DRR strategies to Sendai Framework</b> (0-1, 2017)	0	No Data
Sustainable Energy	<b>Access to electricity</b> (% of population, 2018)	100,00%	SDG Target 7.1 has been achieved
	<b>Renewable energy</b> (% of total energy consumption, 2016)	15,18%	Low share, increases needed to contribute to SDG Target 7.2
	<b>Renewable electricity</b> (% of electricity production, 2015)	52,80%	High share of renewable electricity
	<b>Access to clean cooking</b> (% of total population with access, 2018)	>95%	Universal access to clean cooking has been achieved
	<b>Fossil fuel subsidies</b> (% of GDP, 2015)	1,53%	Among the Top 35 countries with >1% GDP spent on FF subsidies
	<b>Energy Intensity</b> (megajoules per constant 2011 PPP GDP, 2017)	3,46 MJ/\$	Energy Intensity within range of EU-MS, below the EU-27 average
Food systems: from Farms to Forks	<b>Rural poverty</b> (% of rural population below \$190 a day, 2018)	6,60%	Further efforts needed to achieve SDG Target 1.1 (0% by 2030)
	<b>Food security</b> (% of pop in moderate or severe insecurity, 2016-2018)	23,30%	Significant efforts needed to meet SDG Target 2.1 of 0% by 2030
	<b>Nutrition</b> (% of children under 5 who are stunted, 2014)	23,90%	Significant efforts needed to meet SDG Target 2.2 of 0% by 2030
	<b>Fertilizer consumption</b> (kg per hectare, 2016)	345,44 kg/ha	Among top 25% of countries with most intensive fertilizer use
	<b>Land degradation</b> (national area with declining productivity 1999-2013)	4,63%	Progress is still needed to meet SDG Target 15.3 of 0% by 2030
	<b>Agriculture and FOLU share of emissions</b> (% of CO2eq in 2017)	47,43%	High share of emissions - Key sector for climate mitigation
Water & Oceans	<b>Population using at least basic drinking water</b> (% of pop., 2017)	93,99%	Further progress needed to meet SDG Target 6.1 (100% by 2030)
	<b>Population using at least basic sanitation services</b> (% of pop., 2017)	88,00%	Further progress needed to meet SDG Target 6.2 (100% by 2030)
	<b>Water scarcity</b> (m <sup>3</sup> of renewable freshwater per capita, 2014)	27818 m <sup>3</sup> /cap	Water shortages should be only irregular/local (>1700m <sup>3</sup> /capita)
	<b>Water stress</b> (water withdrawal as % of total available water, 2014)	3,74%	Low water stress (less than 25% of resource extraction)
	<b>Marine protected areas</b> (% of total marine area, 2020)	13,62%	Aichi Target 11 of the CBD has been met for marine ecosystems
	<b>Fish stocks overexploited or collapsed</b> (% of fish stocks, 2014)	29,17%	SDG Target 14.4 (0% by 2020) not met, significant efforts needed

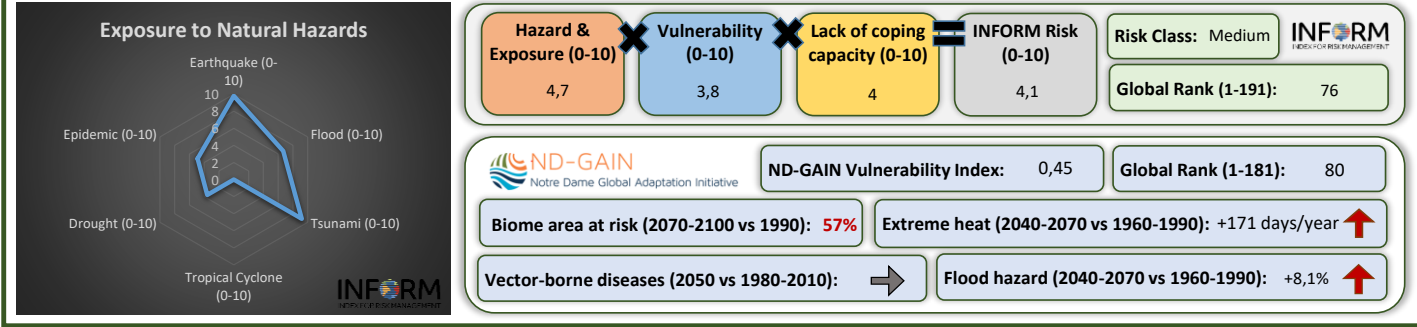
## Greenhouse Gas Emission History (Production-based)



## Historic Trends of selected indicators per Green Deal Pillar (Base 100)



## Climate Adaptation Needs



## Environmental Performance Index 2020

2020 EPI Country Rank (out of 180)

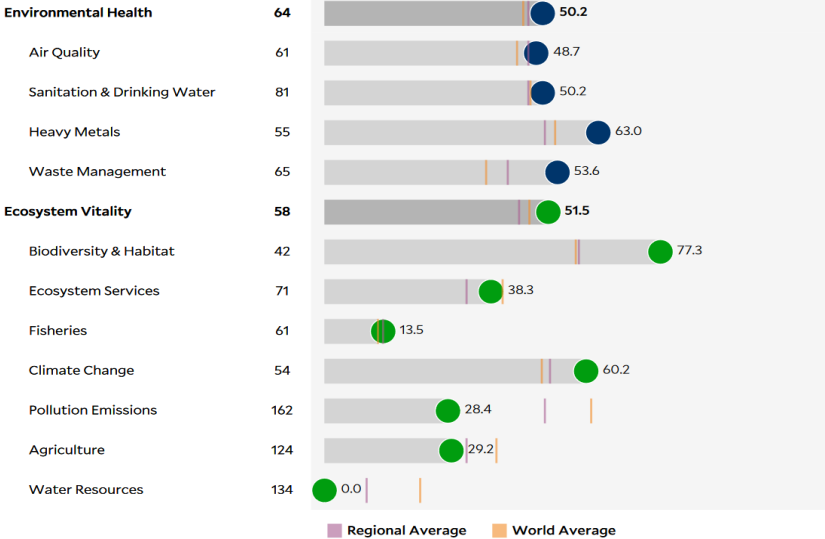
56

2020 EPI Score [0=worst, 100=best]

51,0

### Issue Categories

Rank [/180]



## SDG Index 2020

(UN SDSN & Bertelsmann Stiftung)



### Legend:

- SDG achieved
- Challenges remain
- Significant challenges remain
- Major challenges remain
- Information unavailable