



Green Deal Country Fiche

Dominican Republic

Population in 2019
10,74 million habitants

Projected population in 2050
12,80 million habitants

Surface
48,7 thousands km²

Population density (2019)
221 habitants per km²

GDP per capita
8.282,12 US\$ (2019)

Population living below 1,90 \$/day
0,40 % in 2018

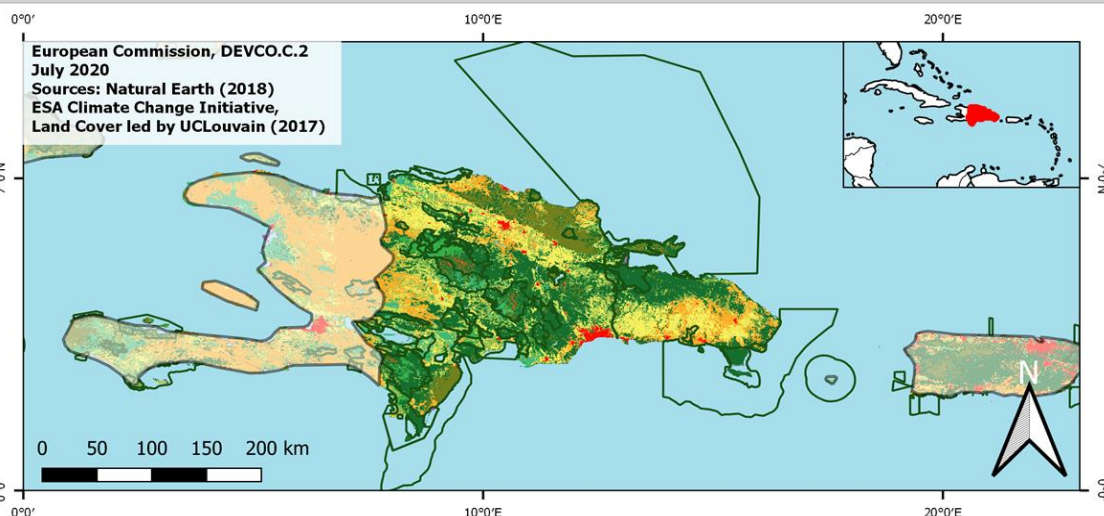
Human Development Index
0,76 (2019, UN target: >0,8)

Legend

□ Main Protected Areas

Land Cover Classes

- Cropland rainfed
- Cropland irrigated
- Mosaic crops/nat.veg
- Tropical dense forest
- Deciduous forest
- Coniferous forest
- Mixed forest
- Shrubland
- Grassland
- Sparse vegetation
- Swamp forest
- Mangrove
- Swamps
- Urban areas
- Bare areas
- Water bodies
- Permanent snow and ice



Share of global emissions (2018)
0,068%

NDC: Mitigation Summary

(NDC from 2020)

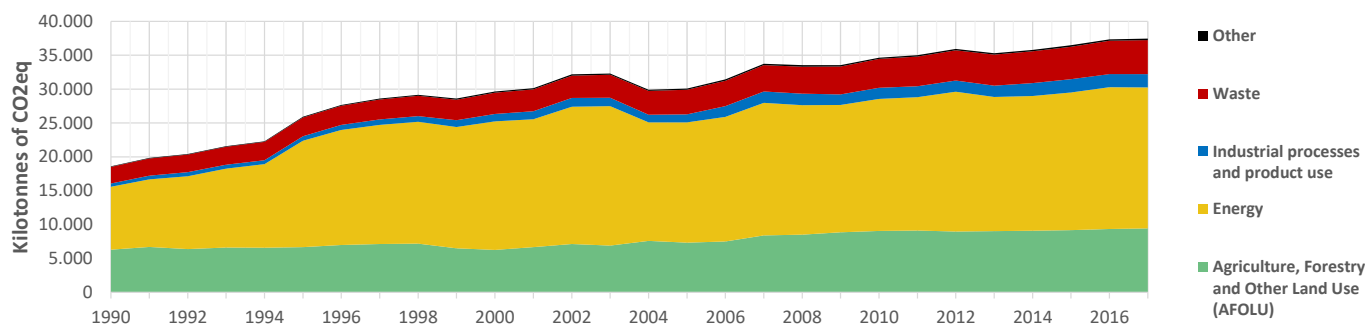
The Dominican Republic commits to reduce its GHG emissions by 27% (incl. 7% unconditional) by 2030 compared to BAU (i.e. going below 37 Mt CO₂eq in 2030) targeting energy, industrial processes, AFOLU and waste for an overall cost of USD 8.9 billion.

INTPA "NDC Group"

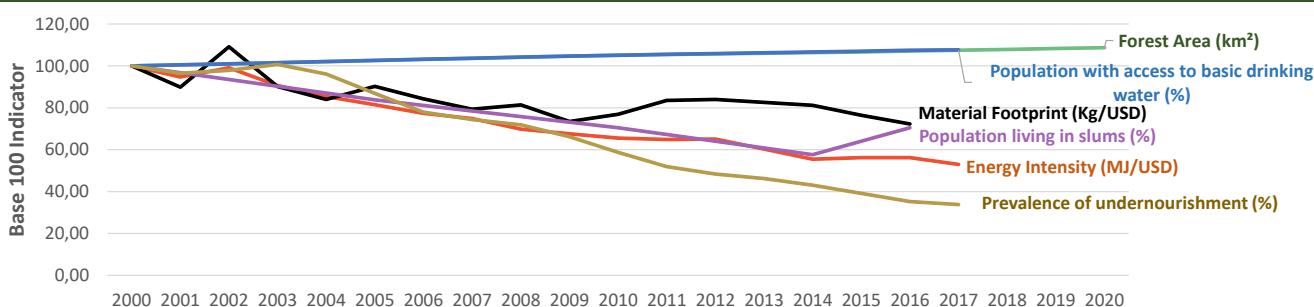
Group 3 - Suggested focus on adaptation for EU cooperation

Pillar	Indicator Name and Unit	Value	Interpretation
Green, circular and low-carbon economy	Ecological footprint (Consumption in global hectares per capita, 2017)	1,75 gh/cap	Above the global sustainable threshold of 1,6 gha per capita
	Recycling and composting rate (% of total solid waste, 2017)	NA	No Data
	Water productivity (USD of GDP per m³ of water extracted, 2017)	7,51 \$/m³	Low water productivity (minimum EU MS value : 10 \$/m³)
	Material footprint (Kg of raw materials used per USD of GDP, 2010)	0,88 kg/\$	Smaller footprint than the EU-27 average of 0,97 kg/USD
	Sustainable Consumption and Production Policy Framework (2017)	B3	Policy framework for SCP, but lacks a specific policy instrument
	Change in emissions (production) vs change in GDP (2007-2017)	+12% / +82%	Relative decoupling: emissions increased, but slower than GDP
Biodiversity & Forests	Terrestrial protected areas (% of total land area, 2020)	26,19%	CBD Target has been met for terrestrial ecosystems (17% by 2020)
	Threatened species (% of total evaluated species, 2019)	9,20%	High share of threatened species, risk missing SDG target 15.5
	Population around protected areas (% total pop., 10km buffer, 2015)	85,97%	Very significant share of population - Landscape approach is key
	Forest area change (% change between 2015 and 2020)	+1,92 %	Forest cover is increasing, SDG Target 15.2 achieved
	Sustainable forest management (% area with long-term plan, 2020)	NA	No Data
	Employment in forestry (number of full-time equivalents, 2015)	NA	No Data
Green and Smart Cities	Proportion of urban population living in slums (% in 2016)	14,80%	Further efforts needed for SDG Target 11.1 (upgrade by 2030)
	Satisfaction with public transport (% satisfied, 2018)	62,06%	Medium satisfaction (UN SDSN interpretation)
	Solid waste uncollected or dumped in the open (% of total, 2017)	>80%	Significant efforts are needed to meet SDG Target 11.6
	Wastewater receiving primary treatment (% of total)	48,70%	Further efforts needed to ensure at least full primary treatment
	Urban air pollution (µg/m³ of PM 2.5 particules, 2016)	13,31 µg/m³	Within EU 2020 target (18µg/m³), above WHO guideline (10µg/m³)
	Alignment of national DRR strategies to Sendai Framework (0-1 Score)	NA	No Data
Sustainable Energy	Access to electricity (% of population, 2018)	100,00%	SDG Target 7.1 has been achieved
	Renewable energy (% of total energy consumption, 2016)	17,50%	Low share, increases needed to contribute to SDG Target 7.2
	Renewable electricity (% of electricity production, 2015)	11,63%	Low share, increases needed to contribute to SDG Target 7.2
	Access to clean cooking (% of total population with access, 2018)	91,30%	Some efforts still needed towards universal access to clean cooking
	Fossil fuel subsidies (% of GDP, 2015)	1,87%	Among the Top 35 countries with >1% GDP spent on FF subsidies
	Energy Intensity (megajoules per constant 2011 PPP GDP, 2017)	2,32 MJ/\$	Energy Intensity within range of EU-MS, below the EU-27 average
Food systems: from Farms to Forks	Rural poverty (% of rural population below \$190 a day, 2018)	NA	No Data
	Food security (% of population in food crisis or worse, 2019)	NA	No Data
	Nutrition (% of children under 5 who are stunted, 2013)	7,10%	Progress is still needed to meet SDG Target 2.2 of 0% by 2030
	Fertilizer consumption (kg per hectare, 2016)	88,09 kg/ha	Within range of EU MS values (below EU overall use of 153 kg/ha)
	Land degradation (national area with declining productivity 1999-2013)	0,88%	Progress is still needed to meet SDG Target 15.3 of 0% by 2030
	Agriculture and FOLU share of emissions (% of CO ₂ eq in 2017)	25,21%	Medium share of emissions - Relevant for climate mitigation
Water & Oceans	Population using at least basic drinking water (% of pop., 2017)	96,69%	Some progress still needed to meet SDG Target 6.1 (100% by 2030)
	Population using at least basic sanitation services (% of pop., 2017)	83,90%	Further progress needed to meet SDG Target 6.2 (100% by 2030)
	Water scarcity (m³ of renewable freshwater per capita, 2014)	2258 m³/cap	Water shortages should be only irregular/local (>1700m³/capita)
	Water stress (water withdrawal as % of total available water, 2014)	43,73%	Medium water stress, but still within ecological requirements
	Marine protected areas (% of total marine area, 2020)	14,07%	Aichi Target 11 of the CBD has been met for marine ecosystems
	Fish stocks overexploited or collapsed (% of fish stocks, 2014)	3,76%	SDG Target 14.4 of 0% by 2020 not met, progress still needed

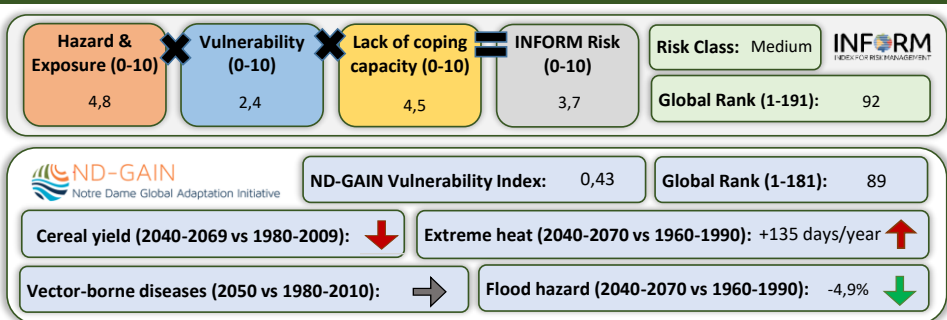
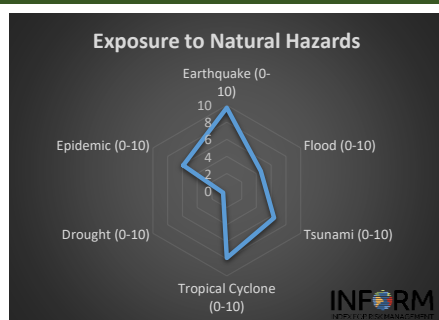
Greenhouse Gas Emission History (Production-based)



Historic Trends of selected indicators per Green Deal Pillar (Base 100)



Climate Adaptation Needs



Environmental Performance Index 2020

2020 EPI Country Rank (out of 180)

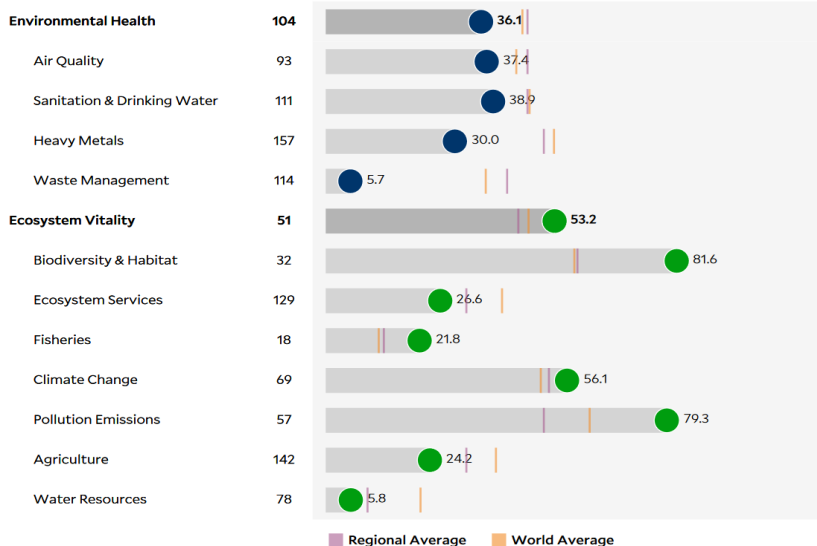
74

2020 EPI Score [0=worst, 100=best]

46,3

Issue Categories

Rank [/180]



SDG Index 2020

(UN SDSN & Bertelsmann Stiftung)

