



Green Deal Country Fiche

Djibouti

Population in 2019
0,97 million habitants

Projected population in 2050
1,30 million habitants

Surface
23,2 thousands km²

Population density (2019)
42 habitants per km²

GDP per capita
3.414,92 US\$ (2019)

Population living below 1,90 \$/day
17,00 % in 2017

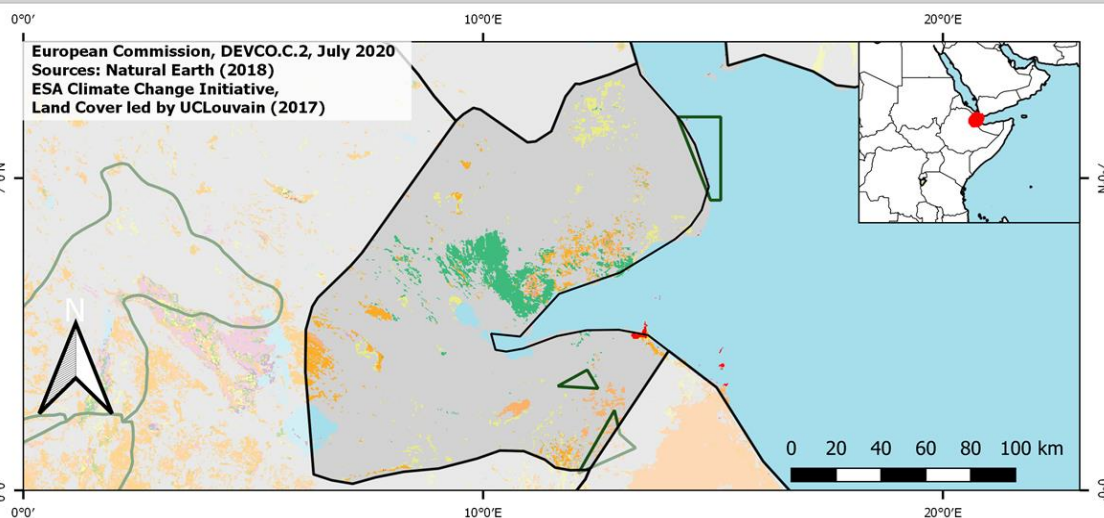
Human Development Index
0,52 (2019, UN target: >0,8)

Legend

Main Protected Areas

Land Cover Classes

- Cropland rainfed
- Cropland irrigated
- Mosaic crops/nat.veg
- Tropical dense forest
- Deciduous forest
- Coniferous forest
- Mixed forest
- Shrubland
- Grassland
- Sparse vegetation
- Swamp forest
- Mangrove
- Swamps
- Urban areas
- Bare areas
- Water bodies
- Permanent snow and ice



Share of global emissions (2018)

0,002%

NDC: Mitigation Summary

(NDC from 2016)

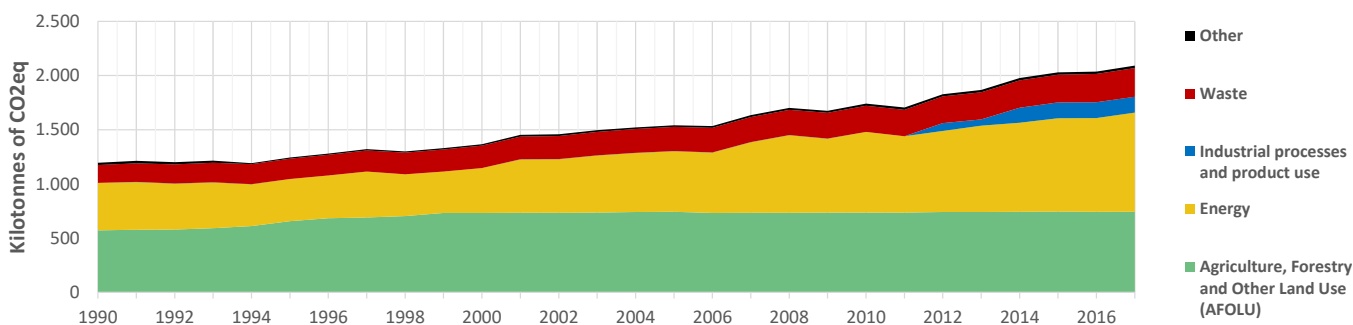
Djibouti aspires to reduce its emissions by 60% (incl. 40% unconditional) by 2030 below BAU (ie going appr. below 1.79 MtCO₂e q in 2030). The NDC mitigation actions would cost appr. USD 5.4 billion and target energy, industry, agriculture, waste and LULUCF

INTPA "NDC Group"

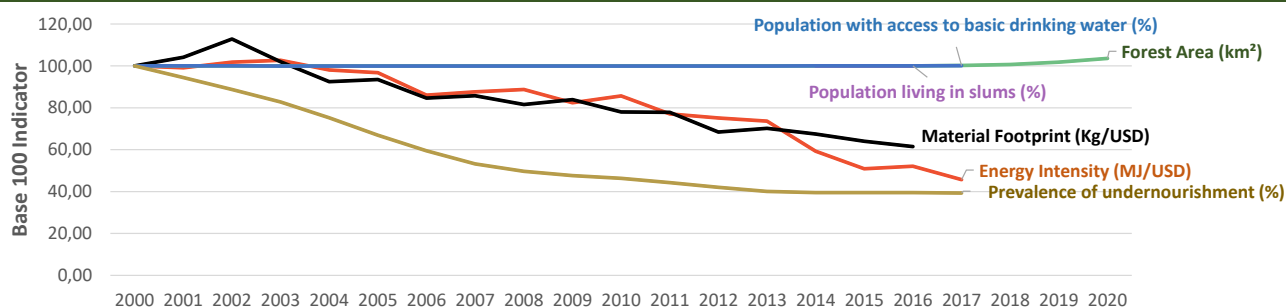
Group 3 - Suggested focus on adaptation for EU cooperation

Pillar	Indicator Name and Unit	Value	Interpretation
Green, circular and low-carbon economy	Ecological footprint (Consumption in global hectares per capita, 2017)	2,25 gh/cap	Above the global sustainable threshold of 1,6 gha per capita
	Recycling and composting rate (% of total solid waste, 2017)	NA	No Data
	Water productivity (USD of GDP per m³ of water extracted, 2017)	NA	No Data
	Material footprint (Kg of raw materials used per USD of GDP, 2010)	1,5 kg/\$	Larger footprint than EU average (0,97), but within range of EU MS
	Sustainable Consumption and Production Policy Framework (2017)	D	No policy framework for SCP has been reported to the UN
Biodiversity & Forests	Change in emissions (production) vs change in GDP (2007-2017)	+30% / +226%	Relative decoupling: emissions increased, but slower than GDP
	Terrestrial protected areas (% of total land area, 2020)	1,34%	Significant efforts are needed to meet CBD Target of 17% by 2020
	Threatened species (% of total evaluated species, 2019)	5,84%	Medium share of threatened species, risk missing SDG target 15.5
	Population around protected areas (% total pop., 10km buffer, 2015)	20,74%	Important share of population - consider landscape approach
	Forest area change (% change between 2015 and 2020)	+3,57 %	Forest cover is increasing, SDG Target 15.2 achieved
Green and Smart Cities	Sustainable forest management (% area with long-term plan, 2020)	0,00%	Significant efforts needed to meet SDG Target 15.2 (100% by 2020)
	Employment in forestry (number of full-time equivalents, 2015)	NA	No Data
	Proportion of urban population living in slums (% in 2016)	65,60%	Significant efforts needed for SDG Target 11.1 (upgrade by 2030)
	Satisfaction with public transport (% satisfied, 2018)	60,77%	Medium satisfaction (UN SDSN interpretation)
	Solid waste uncollected or dumped in the open (% of total, 2017)	NA	No Data
Sustainable Energy	Wastewater receiving primary treatment (% of total)	0,00%	Significant efforts needed to ensure at least full primary treatment
	Urban air pollution (µg/m³ of PM 2.5 particules, 2016)	40,97 µg/m³	Very high air pollution, above key guideline values (WHO, EU, US)
	Alignment of national DRR strategies to Sendai Framework (0-1 Score)	NA	No Data
	Access to electricity (% of population, 2018)	60,40%	Further efforts still needed to meet SDG Target 7.1 of 100% by 2030
	Renewable energy (% of total energy consumption, 2016)	28,50%	Higher share of renewables than the EU 2020 target of 20%
Food systems: from Farms to Forks	Renewable electricity (% of electricity production, 2015)	0,00%	Very low share of renewables, low contribution to SDG Target 7.2
	Access to clean cooking (% of total population with access, 2018)	12,70%	Significant efforts needed for universal access to clean cooking
	Fossil fuel subsidies (% of GDP, 2015)	0,40%	Within the range of subsidy shares from EU-27 MS
	Energy Intensity (megajoules per constant 2011 PPP GDP, 2017)	2,55 MJ/\$	Energy Intensity within range of EU-MS, below the EU-27 average
	Rural poverty (% of rural population below 1\$90 a day, 2017)	57,80%	Significant efforts needed to achieve SDG Target 1.1 (0% by 2030)
Water & Oceans	Food security (% of population in food crisis or worse, 2019)	NA	No Data
	Nutrition (% of children under 5 who are stunted, 2012)	33,50%	Significant efforts needed to meet SDG Target 2.2 of 0% by 2030
	Fertilizer consumption (kg per hectare, 2016)	NA	No Data
	Land degradation (national area with declining productivity 1999-2013)	36,49%	Significant efforts needed to meet SDG Target 15.3 of 0% by 2030
	Agriculture and FOLU share of emissions (% of CO ₂ eq in 2017)	35,47%	Medium share of emissions - Relevant for climate mitigation
Water & Oceans	Population using at least basic drinking water (% of pop., 2017)	75,63%	Further progress needed to meet SDG Target 6.1 (100% by 2030)
	Population using at least basic sanitation services (% of pop., 2017)	63,60%	Further progress needed to meet SDG Target 6.2 (100% by 2030)
	Water scarcity (m³ of renewable freshwater per capita, 2014)	329 m³/cap	Absolute water scarcity (less than 500m³ per person per year)
	Water stress (water withdrawal as % of total available water, 2014)	7,90%	Low water stress (less than 25% of resource extraction)
	Marine protected areas (% of total marine area, 2020)	0,16%	Significant efforts needed to achieve CBD Target of 10% by 2020
	Fish stocks overexploited or collapsed (% of fish stocks, 2014)	No Data	No Data

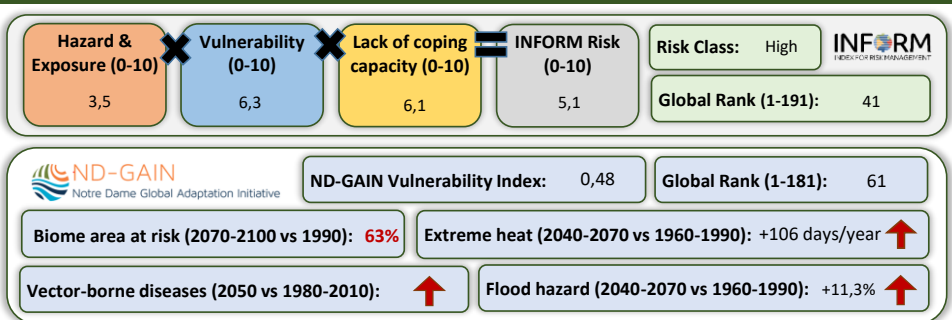
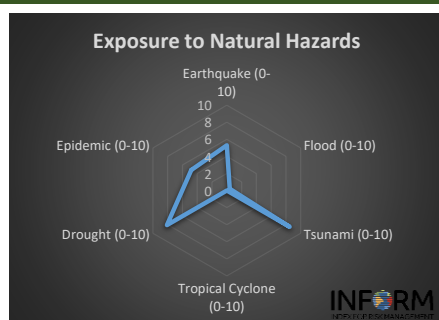
Greenhouse Gas Emission History (Production-based)



Historic Trends of selected indicators per Green Deal Pillar (Base 100)



Climate Adaptation Needs



Environmental Performance Index 2020

2020 EPI Country Rank (out of 180)

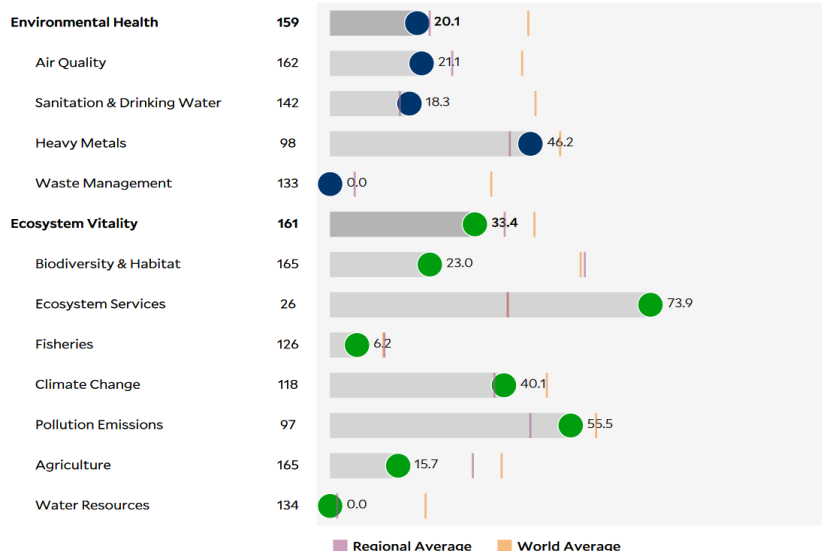
164

2020 EPI Score [0=worst, 100=best]

28,1

Issue Categories

Rank [/180]



SDG Index 2020

(UN SDSN & Bertelsmann Stiftung)



Legend:

- SDG achieved
- Challenges remain
- Significant challenges remain
- Major challenges remain
- Information unavailable