



## Green Deal Country Fiche

Cuba

**Population in 2019**  
11,33 million habitants

**Projected population in 2050**  
10,16 million habitants

**Surface**  
109,9 thousands km²

**Population density (2019)**  
103 habitants per km²

**GDP per capita**  
8.821,82 US\$ (2018)

**Population living below 1,90 \$/day**  
NA

**Human Development Index**  
0,78 (2019, UN target: >0,8)

### Legend

□ Main Protected Areas

### Land Cover Classes

■ Cropland rainfed

■ Cropland irrigated

■ Mosaic crops/nat.veg

■ Tropical dense forest

■ Deciduous forest

■ Coniferous forest

■ Mixed forest

■ Shrubland

■ Grassland

■ Sparse vegetation

■ Swamp forest

■ Mangrove

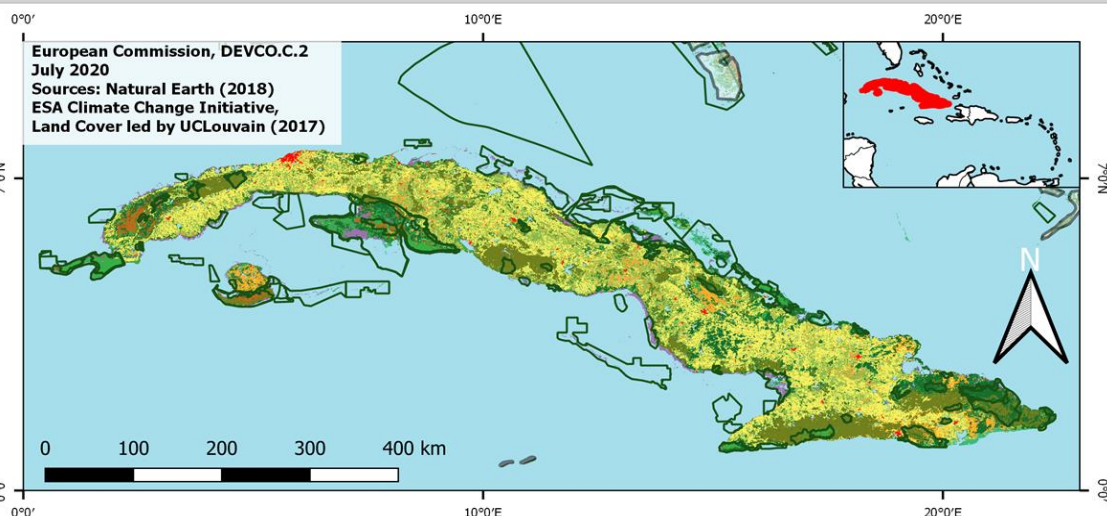
■ Swamps

■ Urban areas

■ Bare areas

■ Water bodies

■ Permanent snow and ice



**Share of global emissions (2018)**  
0,078%

### NDC: Mitigation Summary

(NDC from 2020)

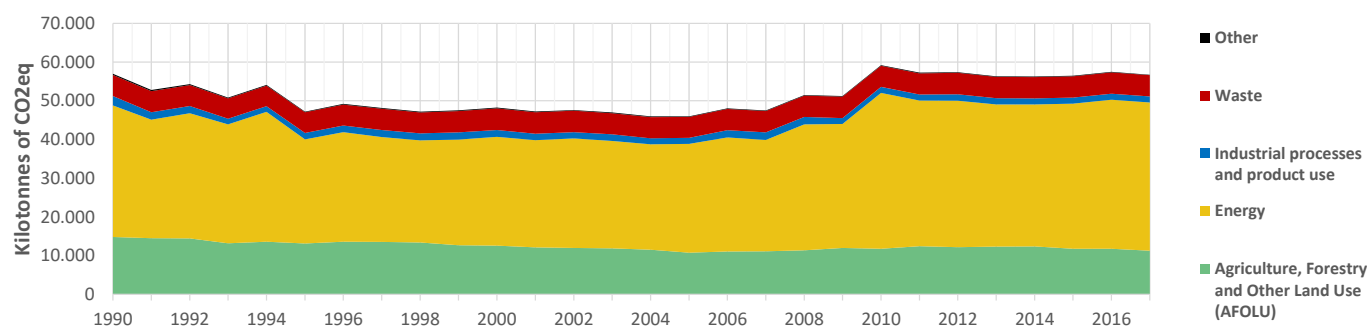
Cuba commits to generate 24% of electricity from renewable sources and increase forest coverage to 33% by 2030, along with additional measures in the energy, transportation, and agriculture sectors (conditional and unconditional).

### INTPA "NDC Group"

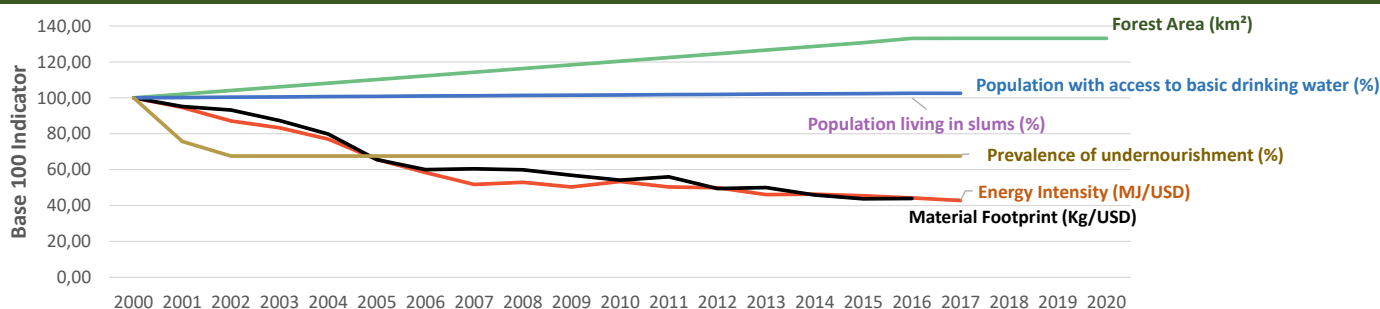
Group 3 - Suggested focus on adaptation for EU cooperation

Pillar	Indicator Name and Unit	Value	Interpretation
Green, circular and low-carbon economy	<b>Ecological footprint</b> (Consumption in global hectares per capita, 2017)	1,82 gh/cap	Above the global sustainable threshold of 1,6 gha per capita
	<b>Recycling and composting rate</b> (% of total solid waste, 2017)	NA	No Data
	<b>Water productivity</b> (USD of GDP per m³ of water extracted, 2017)	12,33 \$/m³	Less water efficient than EU average, but within range of EU MS
	<b>Material footprint</b> (Kg of raw materials used per USD of GDP, 2010)	1,08 kg/\$	Larger footprint than EU average (0,97), but within range of EU MS
	<b>Sustainable Consumption and Production Policy Framework</b> (2017)	B1	Policy framework for SCP, but lacks a coordination mechanism
	<b>Change in emissions (production) vs change in GDP</b> (2007-2017)	+14% / +65%	Relative decoupling: emissions increased, but slower than GDP
Biodiversity & Forests	<b>Terrestrial protected areas</b> (% of total land area, 2020)	16,22%	Further progress is needed to meet CBD Target of 17% by 2020
	<b>Threatened species</b> (% of total evaluated species, 2019)	12,73%	High share of threatened species, risk missing SDG target 15.5
	<b>Population around protected areas</b> (% total pop., 10km buffer, 2015)	47,52%	Very significant share of population - Landscape approach is key
	<b>Forest area change</b> (% change between 2015 and 2020)	+1,82 %	Forest cover is increasing, SDG Target 15.2 achieved
	<b>Sustainable forest management</b> (% area with long-term plan, 2020)	79,08%	Further efforts needed to meet SDG Target 15.2 (100% by 2020)
	<b>Employment in forestry</b> (number of full-time equivalents, 2015)	42600 FTE	Medium share of employment (0,5%-1% of total labor force, 2015)
Green and Smart Cities	<b>Proportion of urban population living in slums</b> (% in 2016)	6,60%	SDG Target 11.1 not yet met, but in range of EU MS values
	<b>Satisfaction with public transport</b> (% satisfied, 2018)	7,94%	Low satisfaction with public transport (UN SDSN interpretation)
	<b>Solid waste uncollected or dumped in the open</b> (% of total, 2017)	50-70%	Significant efforts are needed to meet SDG Target 11.6
	<b>Wastewater receiving primary treatment</b> (% of total)	15,00%	Significant efforts needed to ensure at least full primary treatment
	<b>Urban air pollution</b> (µg/m³ of PM 2.5 particules, 2016)	21,59 µg/m³	Above EU 2020 target (18µg/m³) but below US Standard (35µg/m³)
	<b>Alignment of national DRR strategies to Sendai Framework</b> (0-1 Score)	NA	No Data
Sustainable Energy	<b>Access to electricity</b> (% of population, 2018)	100,00%	SDG Target 7.1 has been achieved
	<b>Renewable energy</b> (% of total energy consumption, 2016)	17,51%	Low share, increases needed to contribute to SDG Target 7.2
	<b>Renewable electricity</b> (% of electricity production, 2015)	3,95%	Very low share of renewables, low contribution to SDG Target 7.2
	<b>Access to clean cooking</b> (% of total population with access, 2018)	80,10%	Further efforts still needed for universal access to clean cooking
	<b>Fossil fuel subsidies</b> (% of GDP, 2015)	NA	No Data
	<b>Energy Intensity</b> (megajoules per constant 2011 PPP GDP, 2017)	1,82 MJ/\$	Energy Intensity within range of EU-MS, below the EU-27 average
Food systems: from Farms to Forks	<b>Rural poverty</b> (% of rural population below 1\$90 a day, 2018)	NA	No Data
	<b>Food security</b> (% of population in food crisis or worse, 2019)	NA	No Data
	<b>Nutrition</b> (% of children under 5 who are stunted, 2019)	NA	No Data
	<b>Fertilizer consumption</b> (kg per hectare, 2016)	49,45 kg/ha	Below lowest EU MS value (60 kg/ha in Romania)
	<b>Land degradation</b> (national area with declining productivity 1999-2013)	1,80%	Progress is still needed to meet SDG Target 15.3 of 0% by 2030
	<b>Agriculture and FOLU share of emissions</b> (% of CO2eq in 2017)	19,90%	Medium share of emissions - Relevant for climate mitigation
Water & Oceans	<b>Population using at least basic drinking water</b> (% of pop., 2017)	95,33%	Some progress still needed to meet SDG Target 6.1 (100% by 2030)
	<b>Population using at least basic sanitation services</b> (% of pop., 2017)	92,80%	Further progress needed to meet SDG Target 6.2 (100% by 2030)
	<b>Water scarcity</b> (m³ of renewable freshwater per capita, 2014)	3332 m³/cap	Water shortages should be only irregular/local (>1700m³/capita)
	<b>Water stress</b> (water withdrawal as % of total available water, 2014)	25,62%	Medium water stress, but still within ecological requirements
	<b>Marine protected areas</b> (% of total marine area, 2020)	3,99%	Significant efforts needed to achieve CBD Target of 10% by 2020
	<b>Fish stocks overexploited or collapsed</b> (% of fish stocks, 2014)	57,98%	SDG Target 14.4 (0% by 2020) not met, significant efforts needed

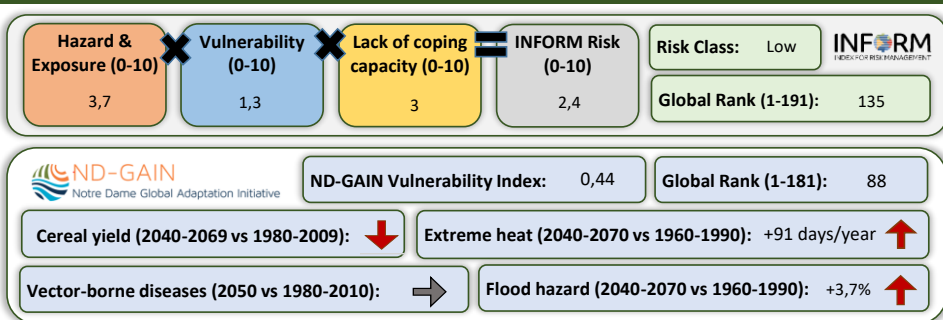
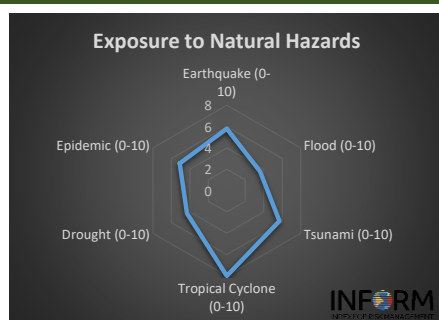
## Greenhouse Gas Emission History (Production-based)



## Historic Trends of selected indicators per Green Deal Pillar (Base 100)



## Climate Adaptation Needs



## Environmental Performance Index 2020

2020 EPI Country Rank (out of 180)

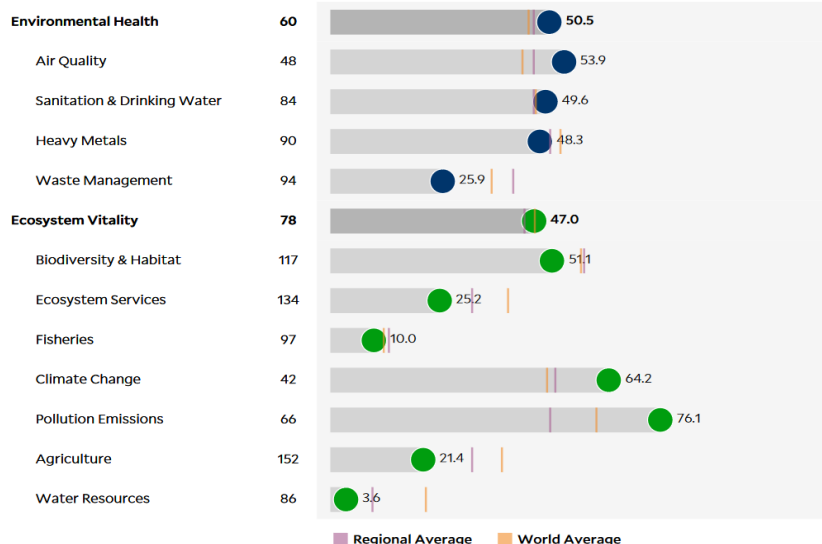
64

2020 EPI Score [0=worst, 100=best]

48,4

### Issue Categories

Rank [/180]



## SDG Index 2020

(UN SDSN & Bertelsmann Stiftung)



### Legend:

- SDG achieved
- Challenges remain
- Significant challenges remain
- Major challenges remain
- Information unavailable