

Green Deal Country Fiche

Costa Rica

Population in 2019
5,05 million habitantsProjected population in 2050
5,77 million habitantsSurface
51,1 thousands km²Population density (2019)
99 habitants per km²GDP per capita
12.243,81 US\$ (2019)Population living below 1,90 \$/day
1,50 % in 2018Human Development Index
0,81 (2019, UN target: >0,8)

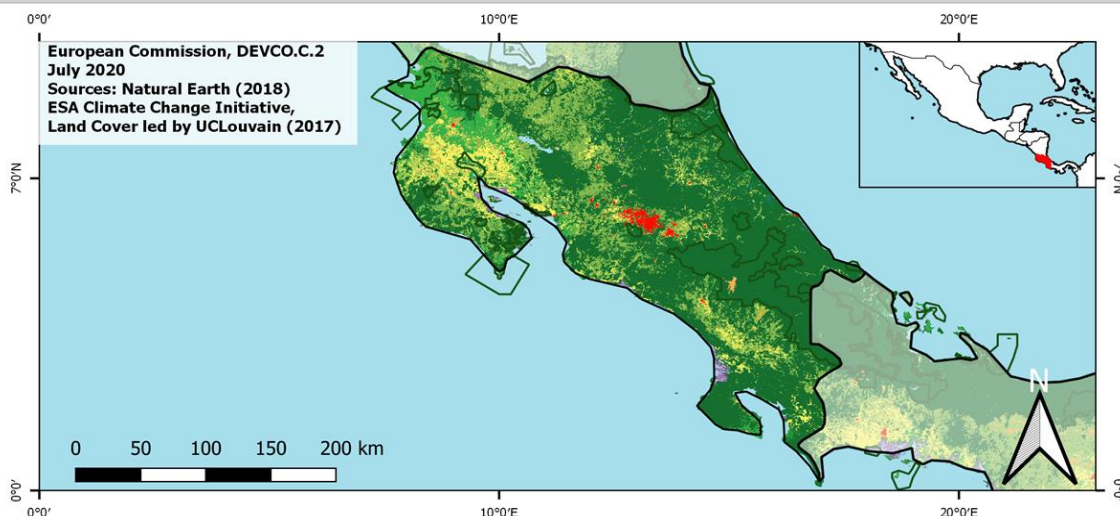
Legend

Main Protected Areas

Land Cover Classes

- Cropland rainfed
- Cropland irrigated
- Mosaic crops/nat.veg
- Tropical dense forest
- Deciduous forest
- Coniferous forest
- Mixed forest
- Shrubland
- Grassland
- Sparse vegetation
- Swamp forest
- Mangrove
- Swamps
- Urban areas
- Bare areas
- Water bodies
- Permanent snow and ice

European Commission, DEVCO.C.2
July 2020
Sources: Natural Earth (2018)
ESA Climate Change Initiative,
Land Cover led by UCLouvain (2017)

Share of global
emissions (2018)

0,022%

NDC: Mitigation Summary

(NDC from 2020)

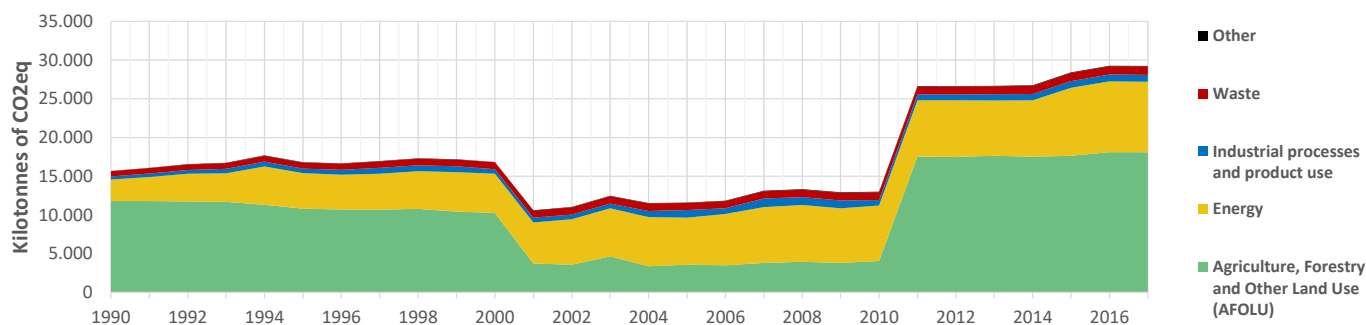
Costa Rica commits to a maximum of net emissions by 2030 of 9.11 MtCO₂eq, and a maximum 2021-2030 budget of net emissions of 106.53 MtCO₂e (conditional and unconditional).

INTPA "NDC Group"

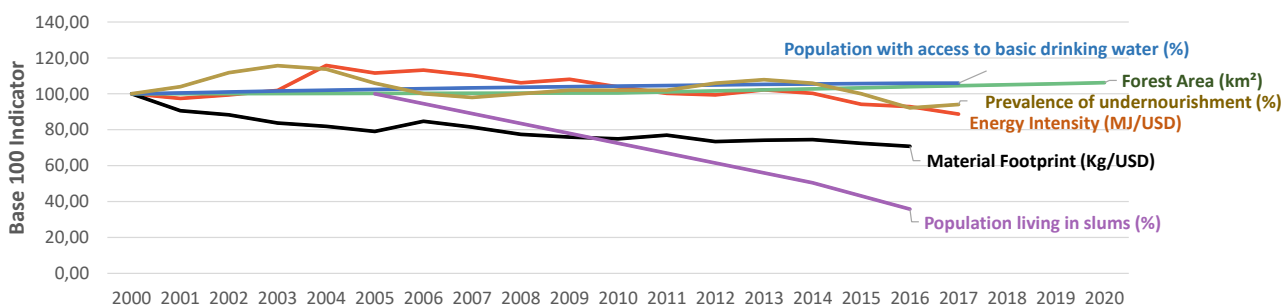
Group 3 - Suggested focus on
adaptation for EU cooperation

Pillar	Indicator Name and Unit	Value	Interpretation
Green, circular and low-carbon economy	Ecological footprint (Consumption in global hectares per capita, 2017)	2,57 gh/cap	Above the global sustainable threshold of 1,6 gha per capita
	Recycling and composting rate (% of total solid waste, 2017)	<5%	No or very low rate of recycling and composting (min EU MS = 7%)
	Water productivity (USD of GDP per m ³ of water extracted, 2017)	16,32 \$/m ³	Less water efficient than EU average, but within range of EU MS
	Material footprint (Kg of raw materials used per USD of GDP, 2010)	0,78 kg/\$	Smaller footprint than the EU-27 average of 0,97 kg/USD
	Sustainable Consumption and Production Policy Framework (2017)	81	Policy framework for SCP, but lacks a coordination mechanism
	Change in emissions (production) vs change in GDP (2007-2017)	+160% / +118%	Unsustainable growth path: emissions are growing faster than GDP
Biodiversity & Forests	Terrestrial protected areas (% of total land area, 2020)	28,11%	CBD Target has been met for terrestrial ecosystems (17% by 2020)
	Threatened species (% of total evaluated species, 2019)	6,89%	Medium share of threatened species, risk missing SDG target 15.5
	Population around protected areas (% total pop., 10km buffer, 2015)	76,83%	Very significant share of population - Landscape approach is key
	Forest area change (% change between 2015 and 2020)	+2,77 %	Forest cover is increasing, SDG Target 15.2 achieved
	Sustainable forest management (% area with long-term plan, 2020)	36,57%	Significant efforts needed to meet SDG Target 15.2 (100% by 2020)
	Employment in forestry (number of full-time equivalents, 2015)	14810 FTE	Medium share of employment (0,5%-1% of total labor force, 2015)
Green and Smart Cities	Proportion of urban population living in slums (% in 2016)	3,90%	SDG Target 11.1 not yet met, but in range of EU MS values
	Satisfaction with public transport (% satisfied, 2018)	72,12%	Medium satisfaction (UN SDSN interpretation)
	Solid waste uncollected or dumped in the open (% of total, 2017)	33%	Further efforts are needed to meet SDG Target 11.6
	Wastewater receiving primary treatment (% of total)	83,30%	Further efforts needed to ensure at least full primary treatment
	Urban air pollution (µg/m ³ of PM 2.5 particules, 2016)	16,72 µg/m ³	Within EU 2020 target (18µg/m ³), above WHO guideline (10µg/m ³)
	Alignment of national DRR strategies to Sendai Framework (0-1, 2019)	0,93	Substantial alignment with the Sendai Framework (1)
Sustainable Energy	Access to electricity (% of population, 2018)	100,00%	SDG Target 7.1 has been achieved
	Renewable energy (% of total energy consumption, 2016)	37,16%	Higher share of renewables than the EU 2020 target of 20%
	Renewable electricity (% of electricity production, 2015)	99,00%	High share of renewable electricity
	Access to clean cooking (% of total population with access, 2018)	93,80%	Some efforts still needed towards universal access to clean cooking
	Fossil fuel subsidies (% of GDP, 2015)	0,00%	No fossil-fuel subsidies, SDG Target 12.C achieved
	Energy Intensity (megajoules per constant 2011 PPP GDP, 2017)	2,75 MJ/\$	Energy Intensity within range of EU-MS, below the EU-27 average
Food systems: from Farms to Forks	Rural poverty (% of rural population below \$90 a day, 2018)	2,10%	Some efforts needed to achieve SDG Target 1.1 (0% by 2030)
	Food security (% of pop in moderate or severe insecurity, 2016-2018)	23,20%	Significant efforts needed to meet SDG Target 2.1 of 0% by 2030
	Nutrition (% of children under 5 who are stunted, 2019)	NA	No Data
	Fertilizer consumption (kg per hectare, 2016)	604,89 kg/ha	Among top 25% of countries with most intensive fertilizer use
	Land degradation (national area with declining productivity 1999-2013)	0,75%	Progress is still needed to meet SDG Target 15.3 of 0% by 2030
	Agriculture and FOLU share of emissions (% of CO ₂ eq in 2017)	61,91%	High share of emissions - Key sector for climate mitigation
Water & Oceans	Population using at least basic drinking water (% of pop., 2017)	99,70%	Some progress still needed to meet SDG Target 6.1 (100% by 2030)
	Population using at least basic sanitation services (% of pop., 2017)	97,80%	SDG Target 6.2 (100% by 2030) is on track for achievement, but
	Water scarcity (m ³ of renewable freshwater per capita, 2014)	23752 m ³ /cap	Water shortages should be only irregular/local (>1700m ³ /capita)
	Water stress (water withdrawal as % of total available water, 2014)	3,06%	Low water stress (less than 25% of resource extraction)
	Marine protected areas (% of total marine area, 2020)	2,70%	Significant efforts needed to achieve CBD Target of 10% by 2020
	Fish stocks overexploited or collapsed (% of fish stocks, 2014)	25,13%	SDG Target 14.4 (0% by 2020) not met, significant efforts needed

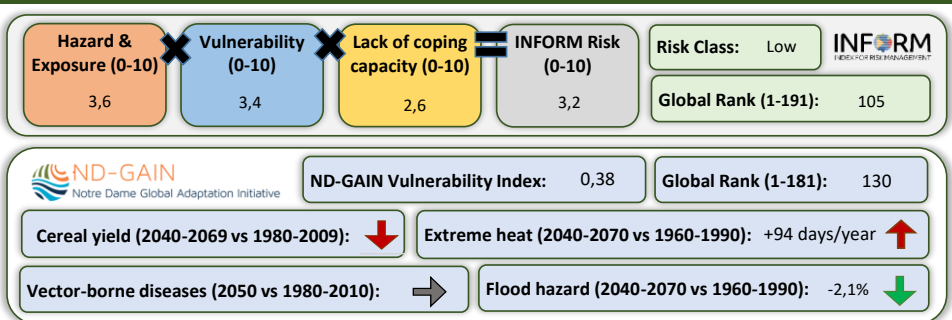
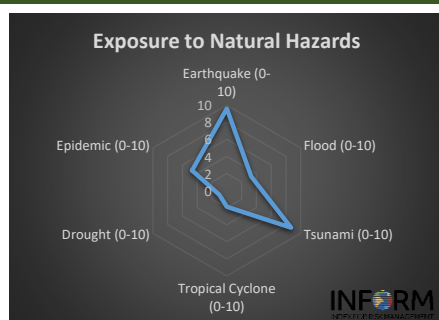
Greenhouse Gas Emission History (Production-based)



Historic Trends of selected indicators per Green Deal Pillar (Base 100)



Climate Adaptation Needs



Environmental Performance Index 2020

2020 EPI Country Rank (out of 180)

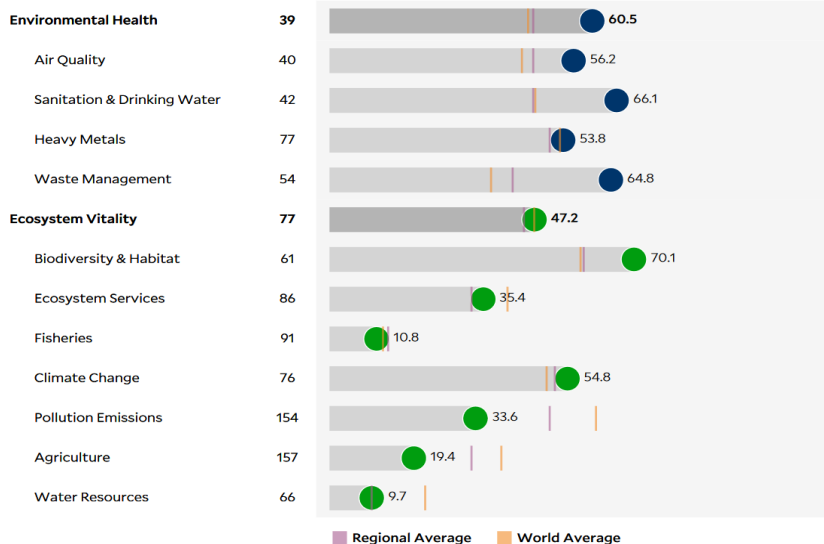
52

2020 EPI Score [0=worst, 100=best]

52,5

Issue Categories

Rank [/180]



SDG Index 2020

(UN SDSN & Bertelsmann Stiftung)



Legend:

- SDG achieved
- Challenges remain
- Significant challenges remain
- Major challenges remain
- Information unavailable