



## Green Deal Country Fiche

### Congo (Rep.)

**Population in 2019**  
5,38 million habitants

**Projected population in 2050**  
10,70 million habitants

**Surface**  
342,0 thousands km²

**Population density (2019)**  
16 habitants per km²

**GDP per capita**  
2.279,97 US\$ (2019)

**Population living below 1,90 \$/day**  
38,20 % in 2011

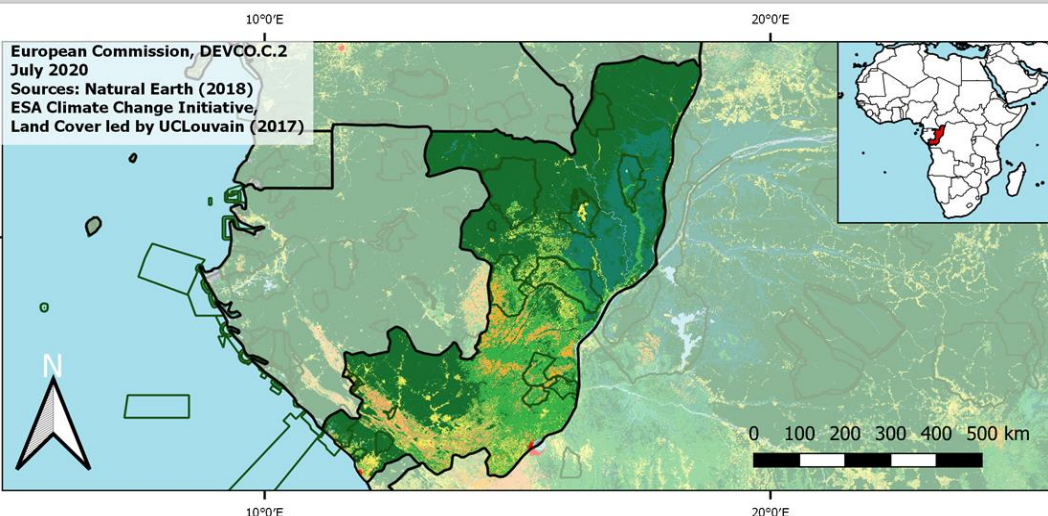
**Human Development Index**  
0,57 (2019, UN target: >0,8)

#### Legend

□ Main Protected Areas

#### Land Cover Classes

- Cropland rainfed
- Cropland irrigated
- Mosaic crops/nat.veg
- Tropical dense forest
- Deciduous forest
- Coniferous forest
- Mixed forest
- Shrubland
- Grassland
- Sparse vegetation
- Swamp forest
- Mangrove
- Swamps
- Urban areas
- Bare areas
- Water bodies
- Permanent snow and ice



**Share of global emissions (2018)**  
0,009%

#### NDC: Mitigation Summary

(NDC from 2017)

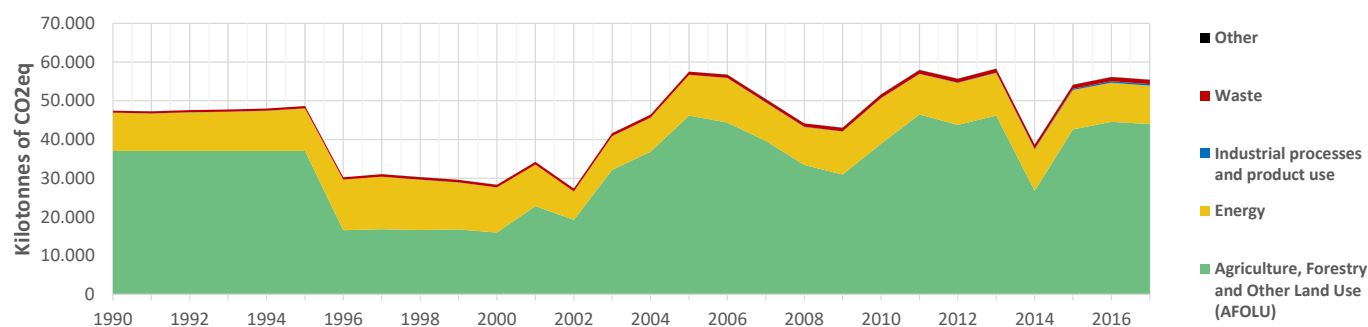
The Republic of Congo conditionally aspires to reduce its emissions by 48 % in 2025 compared to BAU (i.e. max 9 MtCO<sub>2</sub>eq) and 54% by 2035 (i.e. max 16 MtCO<sub>2</sub>eq). Implementing all NDC actions (2015-2025) would require EUR 5.14 billion external funding.

#### INTPA "NDC Group"

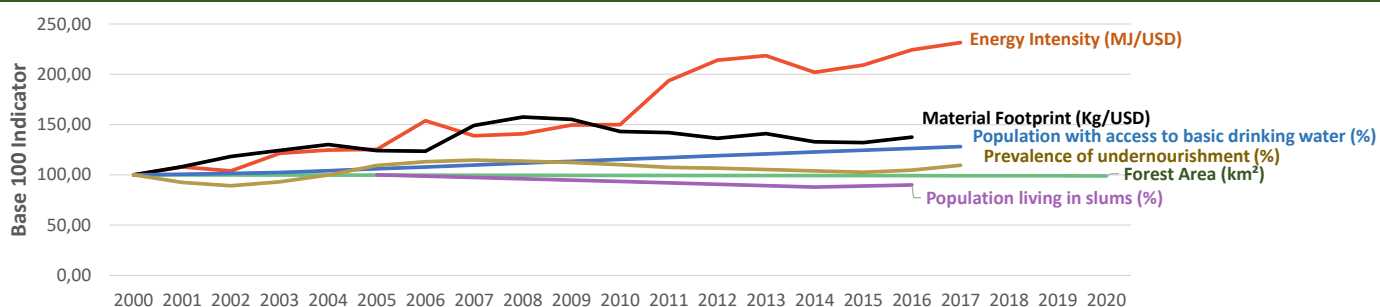
Group 3 - Suggested focus on adaptation for EU cooperation

Pillar	Indicator Name and Unit	Value	Interpretation
Green, circular and low-carbon economy	<b>Ecological footprint</b> (Consumption in global hectares per capita, 2017)	1,07 gh/cap	Within the global sustainable threshold of 1,6 gha per capita
	<b>Recycling and composting rate</b> (% of total solid waste, 2017)	<5%	No or very low rate of recycling and composting (min EU MS = 7%)
	<b>Water productivity</b> (USD of GDP per m³ of water extracted, 2014)	126,54 \$/m³	Less water efficient than EU average, but within range of EU MS
	<b>Material footprint</b> (Kg of raw materials used per USD of GDP, 2010)	0,77 kg/\$	Smaller footprint than the EU-27 average of 0,97 kg/USD
	<b>Sustainable Consumption and Production Policy Framework</b> (2017)	D	No policy framework for SCP has been reported to the UN
	<b>Change in emissions (production) vs change in GDP</b> (2007-2017)	+7% / +4%	Unsustainable growth path: emissions are growing faster than GDP
Biodiversity & Forests	<b>Terrestrial protected areas</b> (% of total land area, 2020)	41,49%	CBD Target has been met for terrestrial ecosystems (17% by 2020)
	<b>Threatened species</b> (% of total evaluated species, 2019)	8,28%	High share of threatened species, risk missing SDG target 15.5
	<b>Population around protected areas</b> (% total pop., 10km buffer, 2015)	54,13%	Very significant share of population - Landscape approach is key
	<b>Forest area change</b> (% change between 2015 and 2020)	-0,31 %	SDG Target 15.2 not achieved (halt deforestation by 2020)
	<b>Sustainable forest management</b> (% area with long-term plan, 2020)	35,95%	Significant efforts needed to meet SDG Target 15.2 (100% by 2020)
	<b>Employment in forestry</b> (number of full-time equivalents, 2015)	12000 FTE	Medium share of employment (0,5%-1% of total labor force, 2015)
Green and Smart Cities	<b>Proportion of urban population living in slums</b> (% in 2016)	48,00%	Further efforts needed for SDG Target 11.1 (upgrade by 2030)
	<b>Satisfaction with public transport</b> (% satisfied, 2018)	47,06%	Medium satisfaction (UN SDSN interpretation)
	<b>Solid waste uncollected or dumped in the open</b> (% of total, 2017)	100%	Significant efforts are needed to meet SDG Target 11.6
	<b>Wastewater receiving primary treatment</b> (% of total)	5,36%	Significant efforts needed to ensure at least full primary treatment
	<b>Urban air pollution</b> (µg/m³ of PM 2.5 particules, 2016)	36,36 µg/m³	Very high air pollution, above key guideline values (WHO, EU, US)
	<b>Alignment of national DRR strategies to Sendai Framework</b> (0-1 Score)	NA	No Data
Sustainable Energy	<b>Access to electricity</b> (% of population, 2018)	68,52%	Further efforts still needed to meet SDG Target 7.1 of 100% by 2030
	<b>Renewable energy</b> (% of total energy consumption, 2016)	63,31%	High share of renewables in total energy consumption
	<b>Renewable electricity</b> (% of electricity production, 2015)	53,34%	High share of renewable electricity
	<b>Access to clean cooking</b> (% of total population with access, 2018)	26,40%	Significant efforts needed for universal access to clean cooking
	<b>Fossil fuel subsidies</b> (% of GDP, 2015)	4,54%	Among Top 10 countries with highest share of FF subsidies globally
	<b>Energy Intensity</b> (megajoules per constant 2011 PPP GDP, 2017)	4,77 MJ/\$	Energy Intensity above EU average, but still within range of EU MS
Food systems: from Farms to Forks	<b>Rural poverty</b> (% of rural population below 1\$90 a day, 2011)	70,90%	Significant efforts needed to achieve SDG Target 1.1 (0% by 2030)
	<b>Food security</b> (% of population in food crisis or worse, 2019)	NA	No Data
	<b>Nutrition</b> (% of children under 5 who are stunted, 2014)	21,20%	Significant efforts needed to meet SDG Target 2.2 of 0% by 2030
	<b>Fertilizer consumption</b> (kg per hectare, 2016)	1,84 kg/ha	Below lowest EU MS value (60 kg/ha in Romania)
	<b>Land degradation</b> (national area with declining productivity 1999-2013)	8,21%	Progress is still needed to meet SDG Target 15.3 of 0% by 2030
	<b>Agriculture and FOLU share of emissions</b> (% of CO <sub>2</sub> eq in 2017)	79,30%	High share of emissions - Key sector for climate mitigation
Water & Oceans	<b>Population using at least basic drinking water</b> (% of pop., 2017)	73,22%	Further progress needed to meet SDG Target 6.1 (100% by 2030)
	<b>Population using at least basic sanitation services</b> (% of pop., 2017)	20,20%	Significant efforts needed to meet SDG Target 6.2 (100% by 2030)
	<b>Water scarcity</b> (m³ of renewable freshwater per capita, 2014)	45575 m³/cap	Water shortages should be only irregular/local (>1700m³/capita)
	<b>Water stress</b> (water withdrawal as % of total available water, 2014)	0,01%	Low water stress (less than 25% of resource extraction)
	<b>Marine protected areas</b> (% of total marine area, 2020)	11,57%	Aichi Target 11 of the CBD has been met for marine ecosystems
	<b>Fish stocks overexploited or collapsed</b> (% of fish stocks, 2014)	No Data	No Data

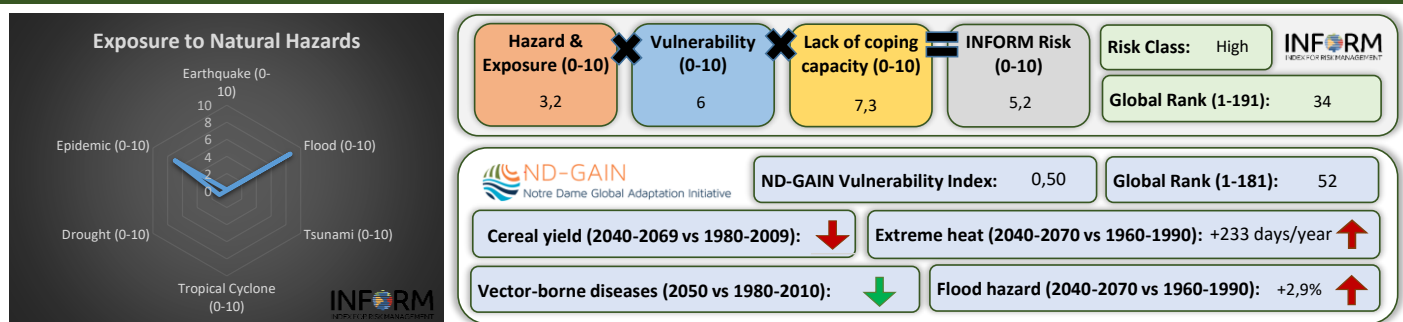
## Greenhouse Gas Emission History (Production-based)



## Historic Trends of selected indicators per Green Deal Pillar (Base 100)



## Climate Adaptation Needs



## Environmental Performance Index 2020

2020 EPI Country Rank (out of 180)

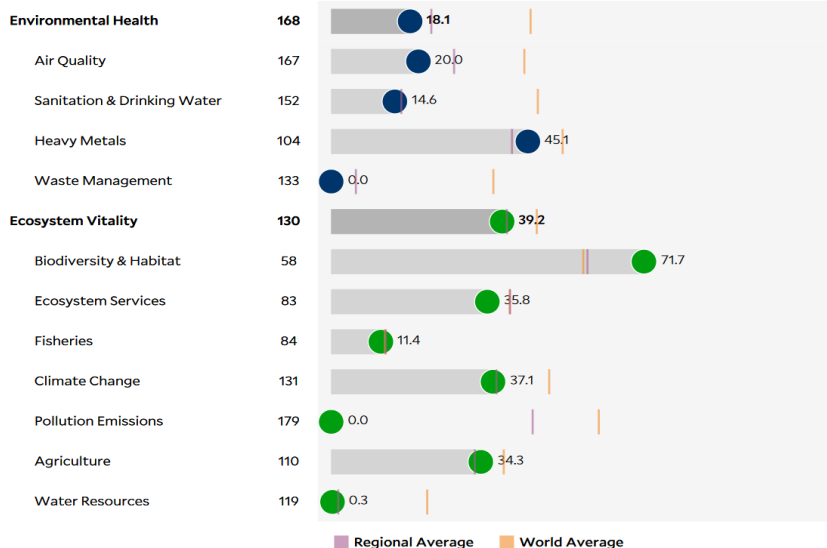
152

2020 EPI Score [0=worst, 100=best]

30,8

### Issue Categories

Rank [/180]



## SDG Index 2020

(UN SDSN & Bertelsmann Stiftung)

