



Green Deal Country Fiche

Chad

Population in 2019
15,95 million habitants

Projected population in 2050
34,03 million habitants

Surface
1.284,0 thousands km²

Population density (2019)
12 habitants per km²

GDP per capita
709,54 US\$ (2019)

Population living below 1,90 \$/day
38,10 % in 2011

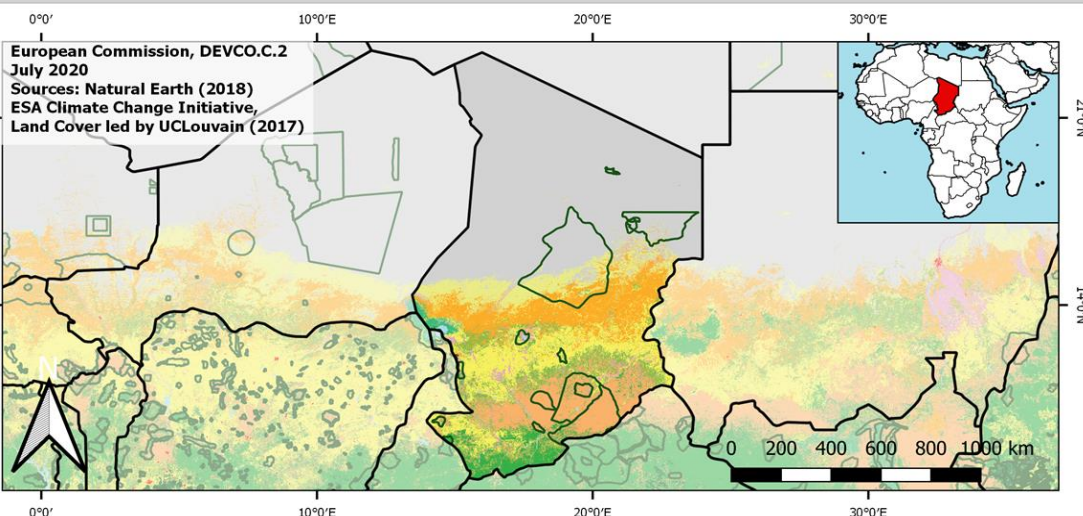
Human Development Index
0,40 (2019, UN target: >0,8)

Legend

Main Protected Areas

Land Cover Classes

- Cropland rainfed
- Cropland irrigated
- Mosaic crops/nat.veg
- Tropical dense forest
- Deciduous forest
- Coniferous forest
- Mixed forest
- Shrubland
- Grassland
- Sparse vegetation
- Swamp forest
- Mangrove
- Swamps
- Urban areas
- Bare areas
- Water bodies
- Permanent snow and ice



Share of global emissions (2018)
0,003%

NDC: Mitigation Summary

(NDC from 2017)

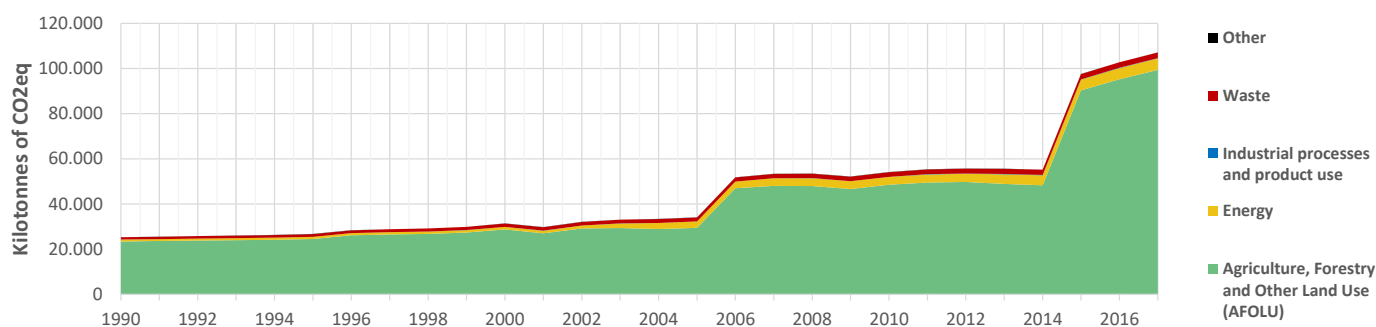
Chad aspires to reduce its emissions by 71% (including 18.2% unconditional) compared to the baseline scenario by 2030, or about 162 MtCO2eq (41.7 MtCO2eq unconditional). Focus sectors: Energy, Agriculture/Livestock, Land Use and Forestry, Waste.

INTPA "NDC Group"

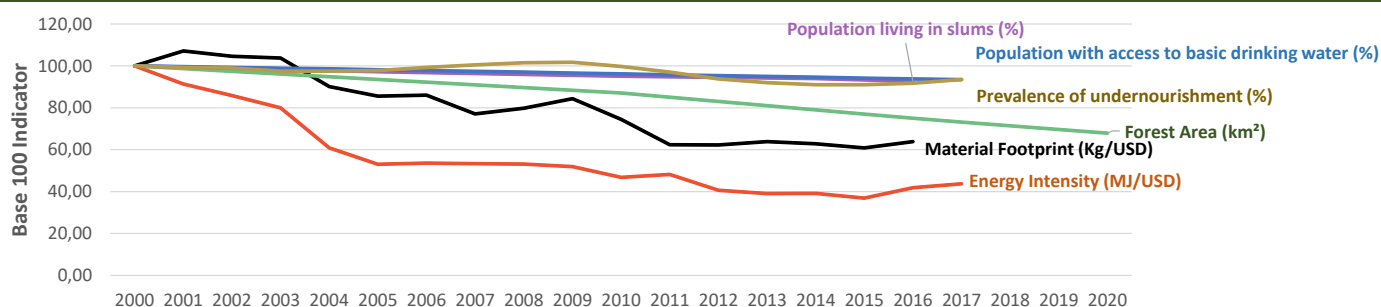
Group 2 - Suggested EU focus on both Mitigation and Adaptation

Pillar	Indicator Name and Unit	Value	Interpretation
Green, circular and low-carbon economy	Ecological footprint (Consumption in global hectares per capita, 2017)	1,67 gh/cap	Above the global sustainable threshold of 1,6 gha per capita
	Recycling and composting rate (% of total solid waste, 2017)	NA	No Data
	Water productivity (USD of GDP per m³ of water extracted, 2014)	8,98 \$/m³	Low water productivity (minimum EU MS value : 10 \$/m³)
	Material footprint (Kg of raw materials used per USD of GDP, 2010)	1,98 kg/\$	Larger footprint than EU average (0,97), but within range of EU MS
	Sustainable Consumption and Production Policy Framework (2017)	C1	No SCP macro policy or policy instrument reported to the UN
	Change in emissions (production) vs change in GDP (2007-2017)	+137% / +15%	Unsustainable growth path: emissions are growing faster than GDP
Biodiversity & Forests	Terrestrial protected areas (% of total land area, 2020)	20,29%	CBD Target has been met for terrestrial ecosystems (17% by 2020)
	Threatened species (% of total evaluated species, 2019)	3,69%	Further conservation efforts needed to secure SDG Target 15.5
	Population around protected areas (% total pop., 10km buffer, 2015)	15,20%	Important share of population - consider landscape approach
	Forest area change (% change between 2015 and 2020)	-11,8 %	SDG Target 15.2 not achieved (halt deforestation by 2020)
	Sustainable forest management (% area with long-term plan, 2020)	NA	No Data
	Employment in forestry (number of full-time equivalents, 2015)	NA	No Data
Green and Smart Cities	Proportion of urban population living in slums (% in 2016)	87,00%	Significant efforts needed for SDG Target 11.1 (upgrade by 2030)
	Satisfaction with public transport (% satisfied, 2018)	47,13%	Medium satisfaction (UN SDSN interpretation)
	Solid waste uncollected or dumped in the open (% of total, 2017)	NA	No Data
	Wastewater receiving primary treatment (% of total)	0,00%	Significant efforts needed to ensure at least full primary treatment
	Urban air pollution (µg/m³ of PM 2.5 particules, 2016)	50,76 µg/m³	Very high air pollution, above key guideline values (WHO, EU, US)
	Alignment of national DRR strategies to Sendai Framework (0-1 Score)	NA	No Data
Sustainable Energy	Access to electricity (% of population, 2018)	11,76%	Significant efforts needed to meet SDG Target 7.1 of 100% by 2030
	Renewable energy (% of total energy consumption, 2016)	85,28%	High share of renewables in total energy consumption
	Renewable electricity (% of electricity production, 2015)	0,00%	Very low share of renewables, low contribution to SDG Target 7.2
	Access to clean cooking (% of total population with access, 2018)	6,60%	Significant efforts needed for universal access to clean cooking
	Fossil fuel subsidies (% of GDP, 2015)	NA	No Data
	Energy Intensity (megajoules per constant 2011 PPP GDP, 2017)	3,25 MJ/\$	Energy Intensity within range of EU-MS, below the EU-27 average
Food systems: from Farms to Forks	Rural poverty (% of rural population below \$190 a day, 2011)	44,00%	Significant efforts needed to achieve SDG Target 1.1 (0% by 2030)
	Food security (% of population in food crisis or worse, 2019)	4,00%	Progress is still needed to meet SDG Target 2.1 of 0% by 2030
	Nutrition (% of children under 5 who are stunted, 2015)	39,80%	Significant efforts needed to meet SDG Target 2.2 of 0% by 2030
	Fertilizer consumption (kg per hectare, 2016)	NA	No Data
	Land degradation (national area with declining productivity 1999-2013)	10,22%	Significant efforts needed to meet SDG Target 15.3 of 0% by 2030
	Agriculture and FOLU share of emissions (% of CO2eq in 2017)	92,73%	High share of emissions - Key sector for climate mitigation
Water & Oceans	Population using at least basic drinking water (% of pop., 2017)	38,70%	Significant efforts needed to meet SDG Target 6.1 (100% by 2030)
	Population using at least basic sanitation services (% of pop., 2017)	8,30%	Significant efforts needed to meet SDG Target 6.2 (100% by 2030)
	Water scarcity (m³ of renewable freshwater per capita, 2014)	1105 m³/cap	Water shortages may appear regularly
	Water stress (water withdrawal as % of total available water, 2014)	2,44%	Low water stress (less than 25% of resource extraction)
	Marine protected areas (% of total marine area, 2020)	Landlocked	Indicator not relevant because the country is landlocked
	Fish stocks overexploited or collapsed (% of fish stocks, 2014)	Landlocked	Indicator not relevant because the country is landlocked

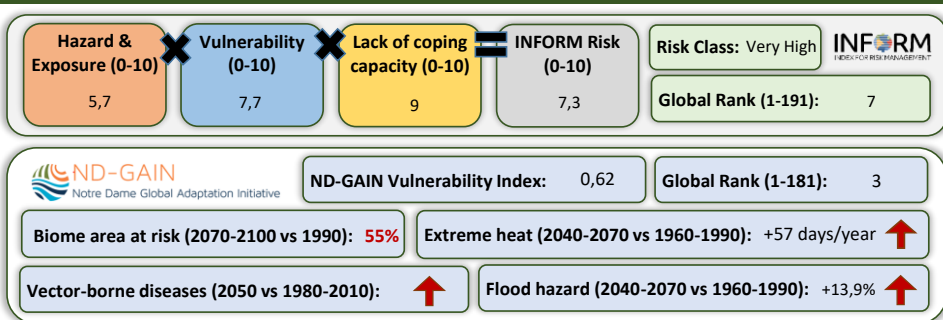
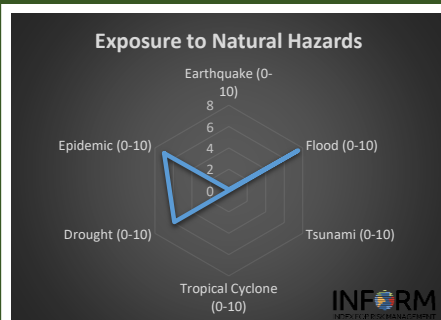
Greenhouse Gas Emission History (Production-based)



Historic Trends of selected indicators per Green Deal Pillar (Base 100)



Climate Adaptation Needs



Environmental Performance Index 2020

2020 EPI Country Rank (out of 180)

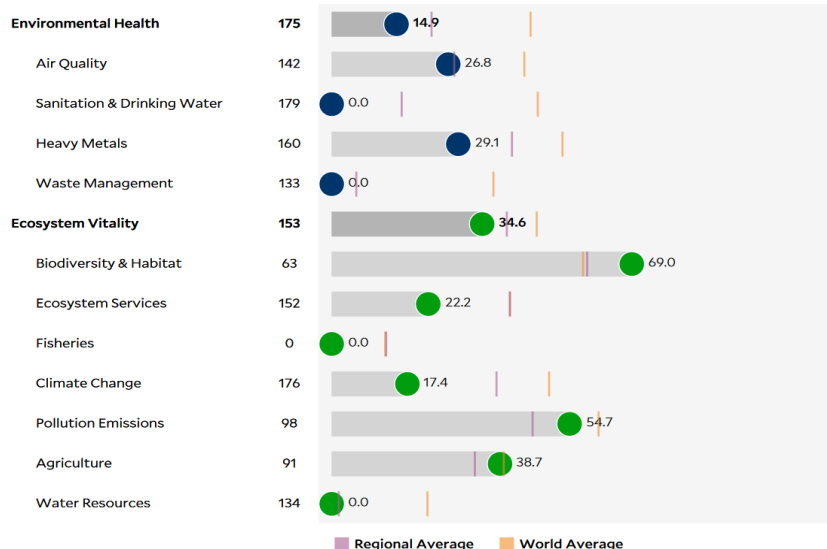
172

2020 EPI Score [0=worst, 100=best]

26,7

Issue Categories

Rank [/180]



SDG Index 2020

(UN SDSN & Bertelsmann Stiftung)



Legend:

- SDG achieved
- Challenges remain
- Significant challenges remain
- Major challenges remain
- Information unavailable