



## Green Deal Country Fiche

### Brazil

#### Population in 2019

211,05 million habitants

#### Projected population in 2050

228,98 million habitants

#### Surface

8.515,8 thousands km²

#### Population density (2019)

25 habitants per km²

#### GDP per capita

8.717,19 US\$ (2019)

#### Population living below 1,90 \$/day

4,40 % in 2018

#### Human Development Index

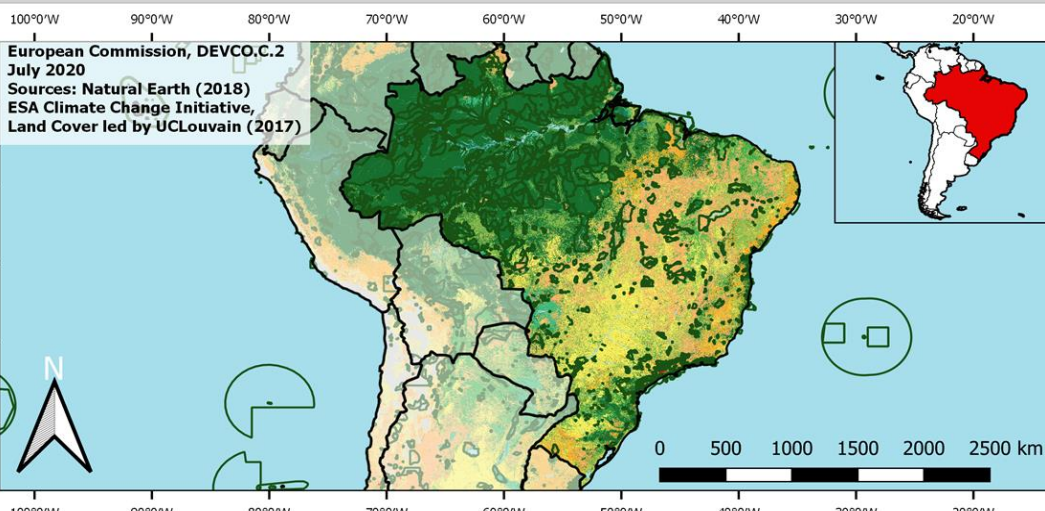
0,77 (2019, UN target: >0,8)

#### Legend

Main Protected Areas

#### Land Cover Classes

- Cropland rainfed
- Cropland irrigated
- Mosaic crops/nat.veg
- Tropical dense forest
- Deciduous forest
- Coniferous forest
- Mixed forest
- Shrubland
- Grassland
- Sparse vegetation
- Swamp forest
- Mangrove
- Swamps
- Urban areas
- Bare areas
- Water bodies
- Permanent snow and ice



#### Share of global emissions (2018)

1,250%

#### NDC: Mitigation Summary

(NDC from 2020)

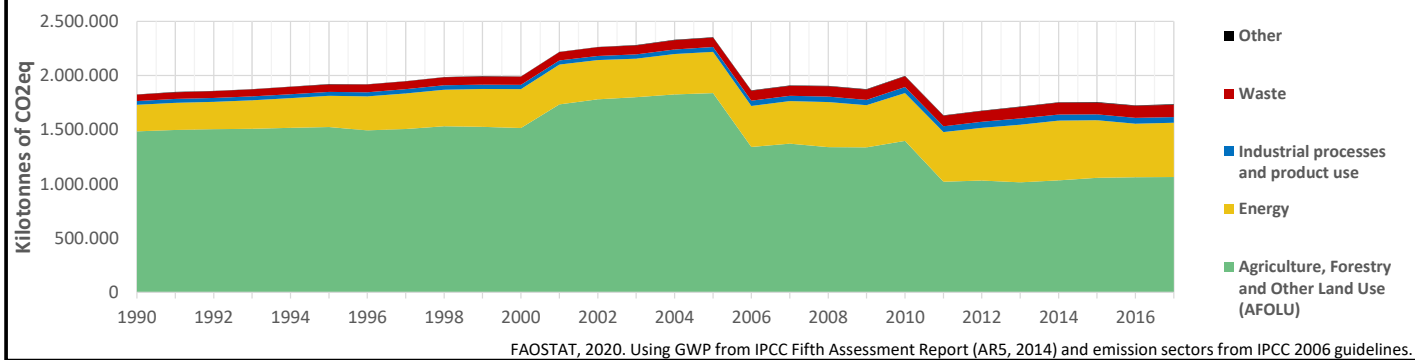
Brazil commits to reduce its emissions by 37% in 2025 and by 43% in 2030 compared to 2005 levels. An indicative long-term objective is climate neutrality by 2060 (depending on the functioning of the market mechanisms provided for in the Paris Agreement).

#### INTPA "NDC Group"

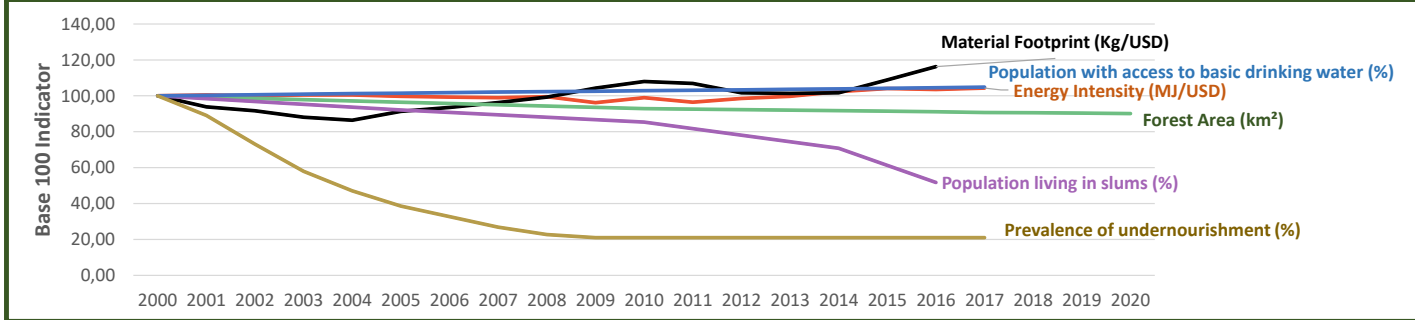
Group 1 - Suggested focus on mitigation for EU cooperation

Pillar	Indicator Name and Unit	Value	Interpretation
Green, circular and low-carbon economy	Ecological footprint (Consumption in global hectares per capita, 2017)	2,81 gh/cap	Above the global sustainable threshold of 1,6 gha per capita
	Recycling and composting rate (% of total solid waste, 2017)	<5%	No or very low rate of recycling and composting (min EU MS = 7%)
	Water productivity (USD of GDP per m³ of water extracted, 2017)	22,04 \$/m³	Less water efficient than EU average, but within range of EU MS
	Material footprint (Kg of raw materials used per USD of GDP, 2010)	1,19 kg/\$	Larger footprint than EU average (0,97), but within range of EU MS
	Sustainable Consumption and Production Policy Framework (2017)	C1	No SCP macro policy or policy instrument reported to the UN
	Change in emissions (production) vs change in GDP (2007-2017)	-11% / +48%	Absolute decoupling: emissions have decreased in absolute terms
Biodiversity & Forests	Terrestrial protected areas (% of total land area, 2020)	30,27%	CBD Target has been met for terrestrial ecosystems (17% by 2020)
	Threatened species (% of total evaluated species, 2019)	26,88%	High share of threatened species, risk missing SDG target 15.5
	Population around protected areas (% total pop., 10km buffer, 2015)	50,06%	Very significant share of population - Landscape approach is key
	Forest area change (% change between 2015 and 2020)	-1,44 %	SDG Target 15.2 not achieved (halt deforestation by 2020)
	Sustainable forest management (% area with long-term plan, 2020)	9,09%	Significant efforts needed to meet SDG Target 15.2 (100% by 2020)
	Employment in forestry (number of full-time equivalents, 2015)	104990 FTE	Low share of total employment (<0,5% of total labor force in 2015)
Green and Smart Cities	Proportion of urban population living in slums (% in 2016)	16,30%	Further efforts needed for SDG Target 11.1 (upgrade by 2030)
	Satisfaction with public transport (% satisfied, 2018)	48,01%	Medium satisfaction (UN SDSN interpretation)
	Solid waste uncollected or dumped in the open (% of total, 2017)	20-30%	Further efforts are needed to meet SDG Target 11.6
	Wastewater receiving primary treatment (% of total)	74,87%	Further efforts needed to ensure at least full primary treatment
	Urban air pollution (µg/m³ of PM 2.5 particules, 2016)	11,82 µg/m³	Within EU 2020 target (18µg/m³), above WHO guideline (10µg/m³)
	Alignment of national DRR strategies to Sendai Framework (0-1 Score)	NA	No Data
Sustainable Energy	Access to electricity (% of population, 2018)	100,00%	SDG Target 7.1 has been achieved
	Renewable energy (% of total energy consumption, 2016)	45,52%	Higher share of renewables than the EU 2020 target of 20%
	Renewable electricity (% of electricity production, 2015)	73,97%	High share of renewable electricity
	Access to clean cooking (% of total population with access, 2018)	>95%	Universal access to clean cooking has been achieved
	Fossil fuel subsidies (% of GDP, 2015)	0,07%	Within the range of subsidy shares from EU-27 MS
	Energy Intensity (megajoules per constant 2011 PPP GDP, 2017)	4,11 MJ/\$	Energy Intensity above EU average, but still within range of EU MS
Food systems: from Farms to Forks	Rural poverty (% of rural population below 1\$90 a day, 2018)	12,60%	Further efforts needed to achieve SDG Target 1.1 (0% by 2030)
	Food security (% of population in food crisis or worse, 2019)	NA	No Data
	Nutrition (% of children under 5 who are stunted, 2019)	NA	No Data
	Fertilizer consumption (kg per hectare, 2016)	186,1 kg/ha	Above EU rate (153 kg/ha), but within range of EU MS values
	Land degradation (national area with declining productivity 1999-2013)	17,13%	Significant efforts needed to meet SDG Target 15.3 of 0% by 2030
	Agriculture and FOLU share of emissions (% of CO2eq in 2017)	61,30%	High share of emissions - Key sector for climate mitigation
Water & Oceans	Population using at least basic drinking water (% of pop., 2017)	98,19%	Some progress still needed to meet SDG Target 6.1 (100% by 2030)
	Population using at least basic sanitation services (% of pop., 2017)	88,30%	Further progress needed to meet SDG Target 6.2 (100% by 2030)
	Water scarcity (m³ of renewable freshwater per capita, 2014)	27721 m³/cap	Water shortages should be only irregular/local (>1700m³/capita)
	Water stress (water withdrawal as % of total available water, 2014)	1,32%	Low water stress (less than 25% of resource extraction)
	Marine protected areas (% of total marine area, 2020)	26,65%	Aichi Target 11 of the CBD has been met for marine ecosystems
	Fish stocks overexploited or collapsed (% of fish stocks, 2014)	31,59%	SDG Target 14.4 (0% by 2020) not met, significant efforts needed

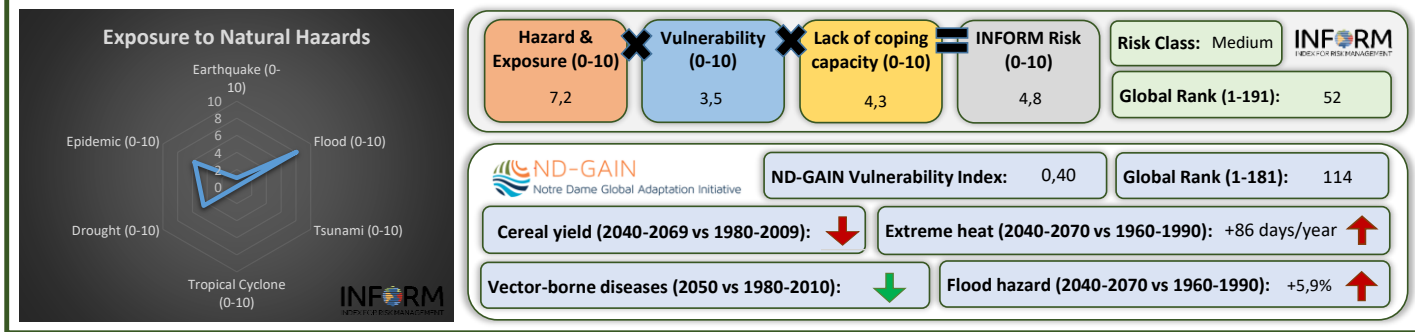
## Greenhouse Gas Emission History (Production-based)



## Historic Trends of selected indicators per Green Deal Pillar (Base 100)



## Climate Adaptation Needs



## Environmental Performance Index 2020

2020 EPI Country Rank (out of 180)

55

2020 EPI Score [0=worst, 100=best]

51,2



## SDG Index 2020

(UN SDSN & Bertelsmann Stiftung)



### Legend:

- SDG achieved
- Challenges remain
- Significant challenges remain
- Major challenges remain
- Information unavailable