



European Union / South Sudan Cooperation



Funded by the European Union

Government of South Sudan

Greater Bahr el Ghazal RURAL DEVELOPMENT PROGRAMME

STEERING COMMITTEE MEETING - ZEAT-BEAD QUARTERLY REVIEW - SORUDEV AND FSTP



Enhanced Local Value Addition and Strengthening Value Chains

Expected results from the **UNIDO** action

- **Output 1:** Potential commodities identified and upgrading strategy for at least five value chains finalized
- **Output 2:** Five upgraded value chains strategies implemented
- **Output 3:** Capacitated at least 800 actors performing in value chain and practicing the technological and business tools for value addition enhancement
- **Output 4:** Four self-sustainable fully equipped agro-processing pilot centres established in selected locations and farmer organizations benefitted directly from project assistance.

Main activities

- **Activity 1:** Rapid market analysis to identify the potential commodities
- **Activity 2:** Analysing potential commodities for value chains and formulating upgrading strategy for at least five potential commodities
- **Activity 3:** Implementing the upgraded strategies for the selected five commodities
- **Activity 4:** Building capacity of at least 800 actors to operate in the value chain and to increase local value addition.
- **Activity 5:** Finalizing plans and design drawings for 12 agro-processing pilot centres and 4 out of the 12 centres established in selected locations, fully equipped and commissioned.

Progress/Achievements

as on April 2016

Activity 1: Rapid market analysis to identify the potential commodities

- Completed and results reported during 5th QRM

Activity 2: Analysing potential commodities for value chains and formulating upgrading strategy

- Commodities identified for VA and VCD after market analysis and discussions with the stakeholders include **Sorghum, Groundnut, Rice, Hide & Skin and Fish**
- Upgrading strategies for the identified commodities formulated; presented before stakeholders for discussions and agreed upon
- Project goal, objectives and plan of action presented to the stakeholders at the state and county level
- Tentative villages identified in consultations with the partners and stakeholders for further assessment

Value Chain up-gradation Plan

Sorghum

- Training producer groups on improved post harvest techniques (drying and storage) including primary processing and value addition
- Introduction of mechanised sorghum processing unit
- Linking producer groups to the potential buyers and explore new buyers
- Linking producer groups to the nearest processing centres

Value Chain up-gradation Plan

Groundnuts

- Training producer groups on improved post harvest management techniques including primary processing and value addition
- Introduction of mechanised groundnuts oil production unit
- Linking producer groups to the potential buyers and explore new buyers
- Linking producer groups to the nearest processing centres

Value Chain up-gradation Plan

Rice

- Introduction of power operated paddy ripper
- Introduction of power operated paddy thresher
- Introduction of small capacity rice mill
- Training of farmers on operation and use of ripper and thresher
- Training of farmers on basic maintenance of ripper and thresher
- Training of operators on operation and basic maintenance of rice mill
- Training of managers on business management and book keeping

Value Chain up-gradation Plan

Hides & Skins

- Training on improved flaying methods
- Training on improved de-fleshing & de-fatting techniques
- Training on improved preservation and processing methods
- Introducing improved low-cost drying structures
- Developing and/or improving market linkage by exploring new markets and traders

Value Chain up-gradation Plan

Fish

- Training of fisher folks on improved preservation techniques (drying and smoking) and production of other VA products
- Training of fisher folks on hygiene and sanitation
- Introduction of low cost dryers and smoking kilns
- Developing market linkages through promotion of collective marketing

Activity 3: Implementing the upgraded strategies for the selected five commodities

- 30 potential bomas identified for further assessment
- Community sensitization started to inform project goal, objective and action plan
- 19 target villages finalized after assessment and in consultations with the stakeholders
- Technical specification finalized for the tools and equipments to be procured
- Procurement process concluded. Order placed.
- Training modules for training on post harvest management and storage finalized
- A brochure developed and printed on Metal Silo
- Plan developed for introduction of metal silos and other low cost storage solution in the project villages
- Introduction of community storage and solar dryers with support from WFP

Selected areas & Commodities for Intervention

#	State	County	Payam	Commodity
1	NBG	Aweil Centre	Aweil Municipality & Aweil Rice Scheme	Hides & Skin and Rice
		Aweil North	Malual North and Malual East	Groundnuts & Sorghum
2	Lakes State	Rumbek Centre	Rumbek Municipality	Hides & Skins
		Rumbek East	Aduel, Aatraba, Pachong	Groundnuts & Sorghum
		Yarol West	Yarol	Fish
3	WBG	Wau	Wau Municipality	Hides & Skin
		Jur River	Kangi, Udici	Sorghum
4	Warrap	Gogrial West	Kwajok Municipality, Alek North	Hides & Skin Sorghum & Groundnuts
		Twic	Turlei	Sorghum

Bomaas selected

State	County	Payam	Bomaa
Warrap	Twic	Turlei	Ayien Amoul
(5)	Gogrial West	Alek North	Makuac Pagong, Majok, Achol Pagong, Panliet
Lake	Rumbek East	Aduel	Billing, Thonic
(5)	Rumbek East	Aatiaba	Dongic, Maboric
	Rumbek East	Pachong	Panawac

Bomas identified

State	County	Payam	Bomaa
NBG	Aweil North	Malual North	Gokmachar, Adhal
(5)		Malual West	Manyiel, Majak Baai, Mathiang,
WBG	Jur River	Kangi	Kangi, Ajugo
(4)		Udici	Barurud, Achol Guot
		Total	19 Bomaas

Equipment and Machinery being procured

#	Item	Qty
1	Combined rice mill (huller & polisher)	1
2	Sorghum flour mill	2
3	Groundnut oil Mill	2
4	Groundnut sheller	5
5	Paddy reaper	2
6	Paddy thresher	2
7	Manual groundnut oil press	4
8	Manual sorghum grinder	10

Activity 4: Building capacity of at least 800 actors to operate in the value chain

- 20 artisans from GBEG trained as trainers on fabrication of different capacity of metal bins and silos at MTC Juba
- Training modules developed for training of farmers on post harvest handling and storage
- Training modules being developed for training of fisher folk on improved fish processing and storage methods
- In partnership with WFP it is planned to implement a ToT on Post Harvest Handling and Storage in GBEG region during May/June.
- Together with GIZ, training of butchers and flyers will be conducted during coming months.

Target Number

#	Training Subject	No. of part.
1	Training of farmers on improved sorghum processing methods	70
2	Training of famers on improved groundnut processing methods	50
3	Training of farmers on improved post harvest management and storage methods	300
4	Training of rice growers on improved harvesting, threshing and storage methods	40
5	Training of fishermen on improved drying and storage	40
6	Training of butchers and flyers on improved slaughtering and flying techniques	160
7	Training of traders/skin processors on improved processing and preservation techniques	20
8	Training on operation and maintenance of power tools and equipment	20
9	Training on business management, accounting, book keeping and marketing	60
10	Training on fabrication of metal workers on fabrication of improved storage structures (metal bins/silos)	20
11	Training on monitoring and evaluation for government officials	20
	Total No. of Beneficiaries	800

Training of Farmers of Post Harvest Handling and Storage

#	Topic	Duration
1	Harvesting Process Stage and time of harvesting, Tools used for harvesting Precautions to be taken during harvesting	1 hr
2	Threshing practices Common threshing methods practiced for different crops Improved threshing methods	1 hr
3	Drying methods Reason for drying , Traditional drying methods vs. best drying practices, How to test dryness or moisture content (salt test and biting test)	2 hr
4	Cleaning and grading How cleaning, sorting and grading is done in the community Recommended practices	2 hr

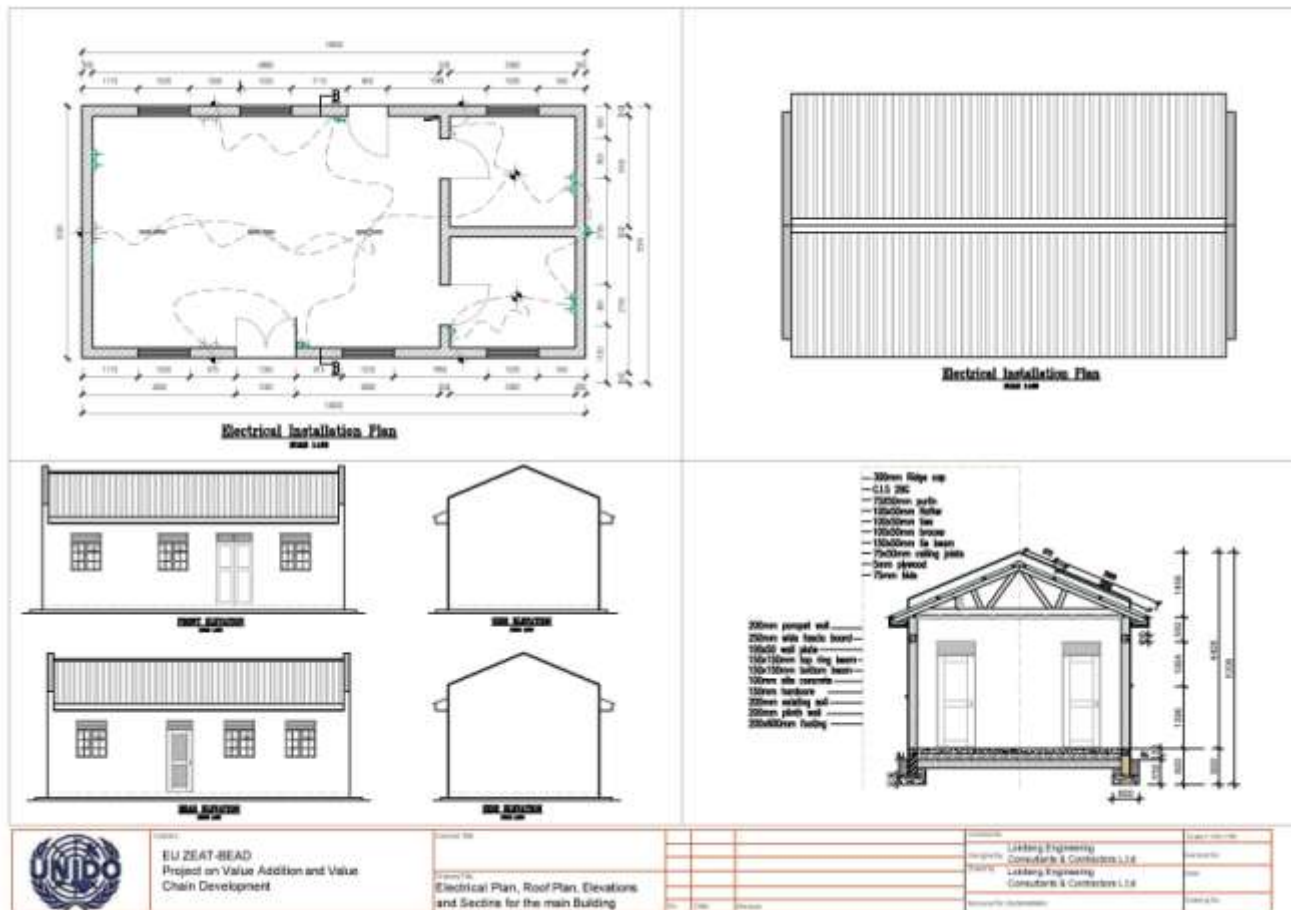
Training of Farmers of Post Harvest Handling and Storage

#	Topic	Duration
5	Principal causes of loss of quality and quantity Primary insects and pests; Secondary insects and pests Sources of insects and pests infestation Methods of controlling primary insects and pests Methods of controlling secondary insects and pests	2 hrs
6	Storage methods Traditional storage structures (advantage and disadvantages) Factors influencing storage practices Types of improved storage structures Methods of practicing good store hygiene	2 hrs
7	Marketing channels and benefits of collective marketing	1 hr

Activity 5: Finalizing plans and design drawings for 12 agro-processing pilot centres and establish 4 centres

- Suitable land identified for establishment of APCs at 4 markets (**Kangi** - WBG, **Gok Machar** - NBG, **Ayein** - Warrap and **Aduel** - Lakes State)
- Copies of land titles obtained from the local government
- Technical drawing and BoQ finalized
- Tendering/Procurement process completed
- Procurement of tools and equipment under process
- Community sensitization started
- In cooperation with UNOPS, plan developed for installation of water facility and market sheds near the APCs

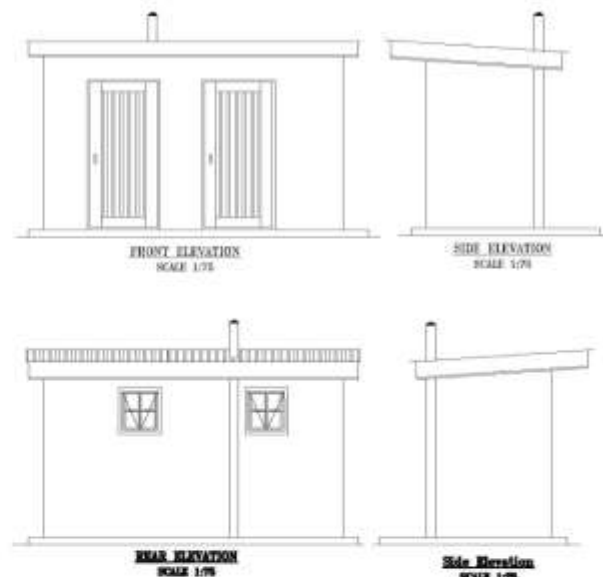
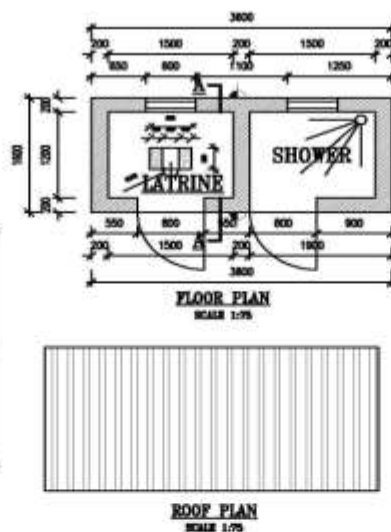
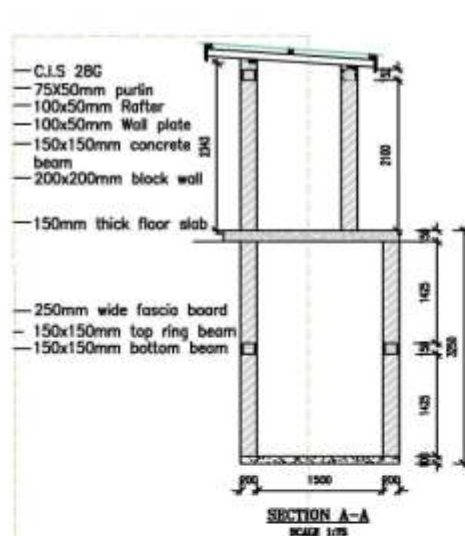
APC Building Plan



FLOOR PLAN
Scale: 1:50

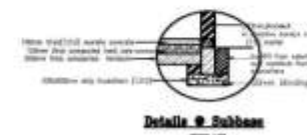
NO.	DESCRIPTION	UNIT	QUANTITY	REMARKS
1	WORKSHOP AREA	SQ. M	1500	
2	OFFICE	SQ. M	100	
3	STORE	SQ. M	100	
4	ENTRY	SQ. M	50	
5	TOILET	SQ. M	10	
6	KITCHEN	SQ. M	50	
7	DINING	SQ. M	50	
8	LIVING	SQ. M	100	
9	BEDROOM	SQ. M	100	
10	BATHROOM	SQ. M	10	
11	CLOSET	SQ. M	10	
12	PORCH	SQ. M	50	
13	DRIVEWAY	SQ. M	100	
14	WALL	SQ. M	1000	
15	FLOOR	SQ. M	1000	
16	CEILING	SQ. M	1000	
17	DOOR	NO.	10	
18	WINDOW	NO.	20	
19	TOILET FIXTURE	NO.	1	
20	KITCHEN FIXTURE	NO.	1	
21	DINING FIXTURE	NO.	1	
22	LIVING FIXTURE	NO.	1	
23	BEDROOM FIXTURE	NO.	1	
24	BATHROOM FIXTURE	NO.	1	
25	CLOSET FIXTURE	NO.	1	
26	PORCH FIXTURE	NO.	1	
27	DRIVEWAY FIXTURE	NO.	1	
28	WALL FIXTURE	NO.	1	
29	FLOOR FIXTURE	NO.	1	
30	CEILING FIXTURE	NO.	1	

Toilet and Shower Block



ELECTRICAL LEGEND Scale 1:100	
	Two-way 15amp. socket out. info.
	One way. 15amp. socket out. info.
	Ceiling Mounted Light Fittings.
	Wall Mounted Light Fittings.
	One gang One Way one way switch.
	Distribution box 1500mm above ground level.
	Meter Box 1500mm above floor level.
	Double Mounted light fitting.

WINDOW AND DOOR SCHEDULES		
Code	W1	D1
View		
Qty.	02	02
Glazing	Double clear glass.	Double clear glass on a 20mm square hollow frame on a steel frame.
Description	Steel door and window with outcrop bars to the whole frames.	



UNIDO
EU ZEAT-BEAD
Project on Value Addition and Value
Chain Development

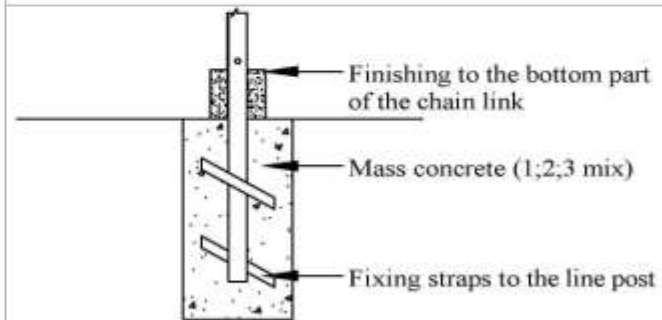
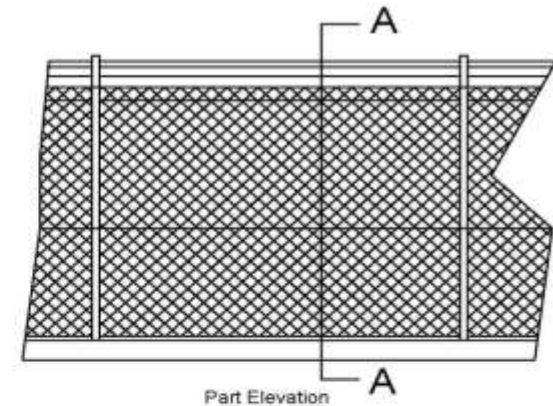
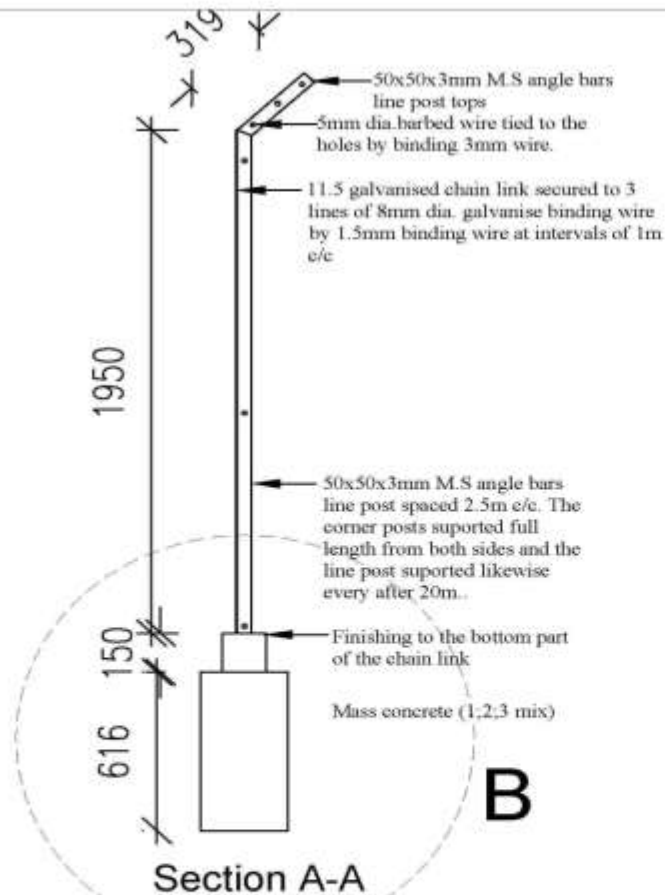
Contract Title
Drawing Title
Plan, section, elevation, roof plan, Electrical
plan, schedules, for the VIP latrine

Rev. Date
Revision

Contract No.
Design No.
Drawing No.
Approved for Implementation

Scale: 1/75
Revision No.
Date: 20-01-2018
Drawing No.: 2016/UN

Fence Details



Contract:
EU ZEAT-BEAD
Project on Value Addition and Value
Chain Development

Contract Title:
Drawing Title:
Elevation, Section and Detail

No.	Date	Revision

Contract No.
Designed by
Drawn by
Approved for implementation:

Scale:
Revision No.
Date
Drawing
No.:

Thank you

