



# SHARE

## Supporting Horn of Africa REsilience

December 2012

Willem Olthof  
DG Development and Cooperation – EuropeAid

# Contents

Context

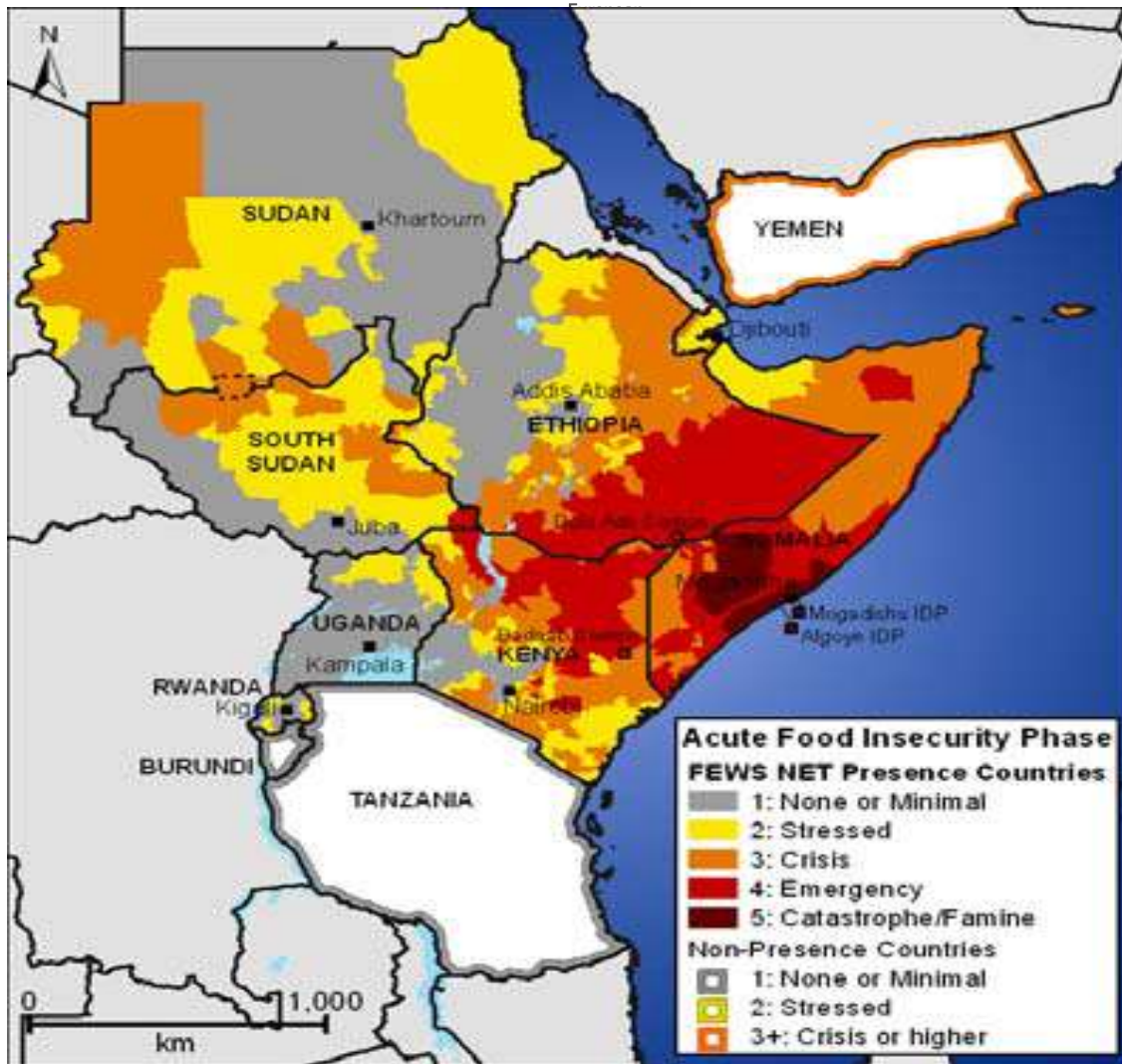
History

Principles and Orientations

Financing

Country Case – Ethiopia

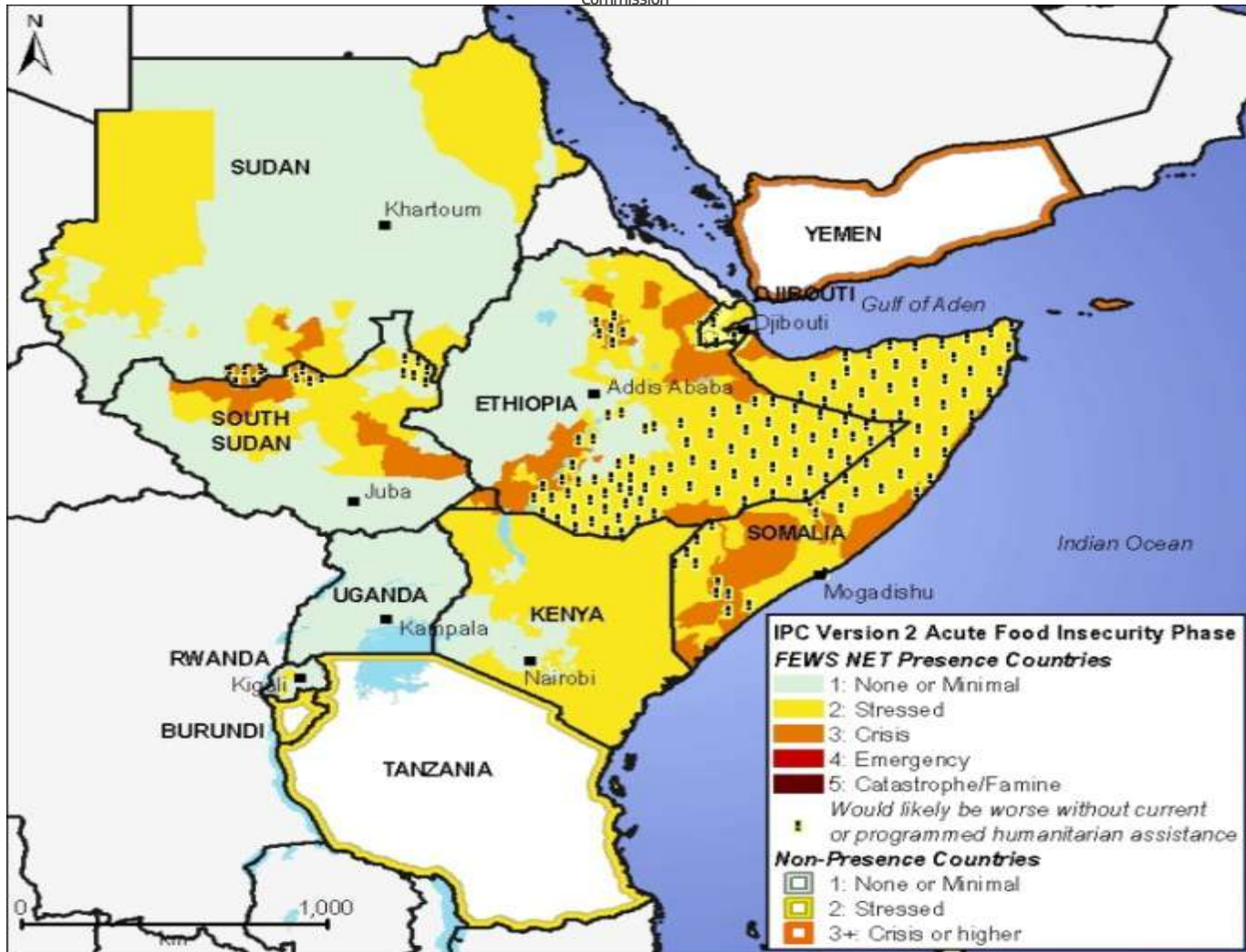
Coordination



August 2011



European  
Commission



Autumn 2012

# Context

- HoA: sustained high levels of undernutrition
- Recurrent droughts and emergencies → continuous humanitarian assistance
- 2011 drought affected over 13 million people, particularly in 'lowlands'
  - important humanitarian response
  - calls for increased investments in 'resilience'

# History of SHARE

**September 2011** – Nairobi Conference (AU/IGAD) on 'Ending Drought Emergencies in the Horn'

**November 2011** – first discussion EU Development Ministers on 'SHARE' ideas

**February 2012** – presentation concept note SHARE by Commissioners Piebalgs and Georgieva to EU Ministers

**April 2012** – Staff Working Document

**May 2012** – Council Conclusions adopted

# SHARE Principles

Improve links between **humanitarian and development** assistance

- Joint analysis of causes, effects and interventions, i.e. use same 'framework'
- Improved information exchange, including cross-learning
- Earlier consultations on plans and interventions; better focus on comparative advantages

Combine a **regional** approach with **national** level interventions

Enhance **coordination** between actors (e.g. Global Alliance)

# Main SHARE Orientations

More attention for **lowlands/drylands**

- Pastoralism/livestock as key factor
  - Productivity & trade
  - Coping mechanisms
  - Alternative livelihoods
- Natural resource management (grazing, land, water) to facilitate livelihood improvements

**Integrated Food Security** approach

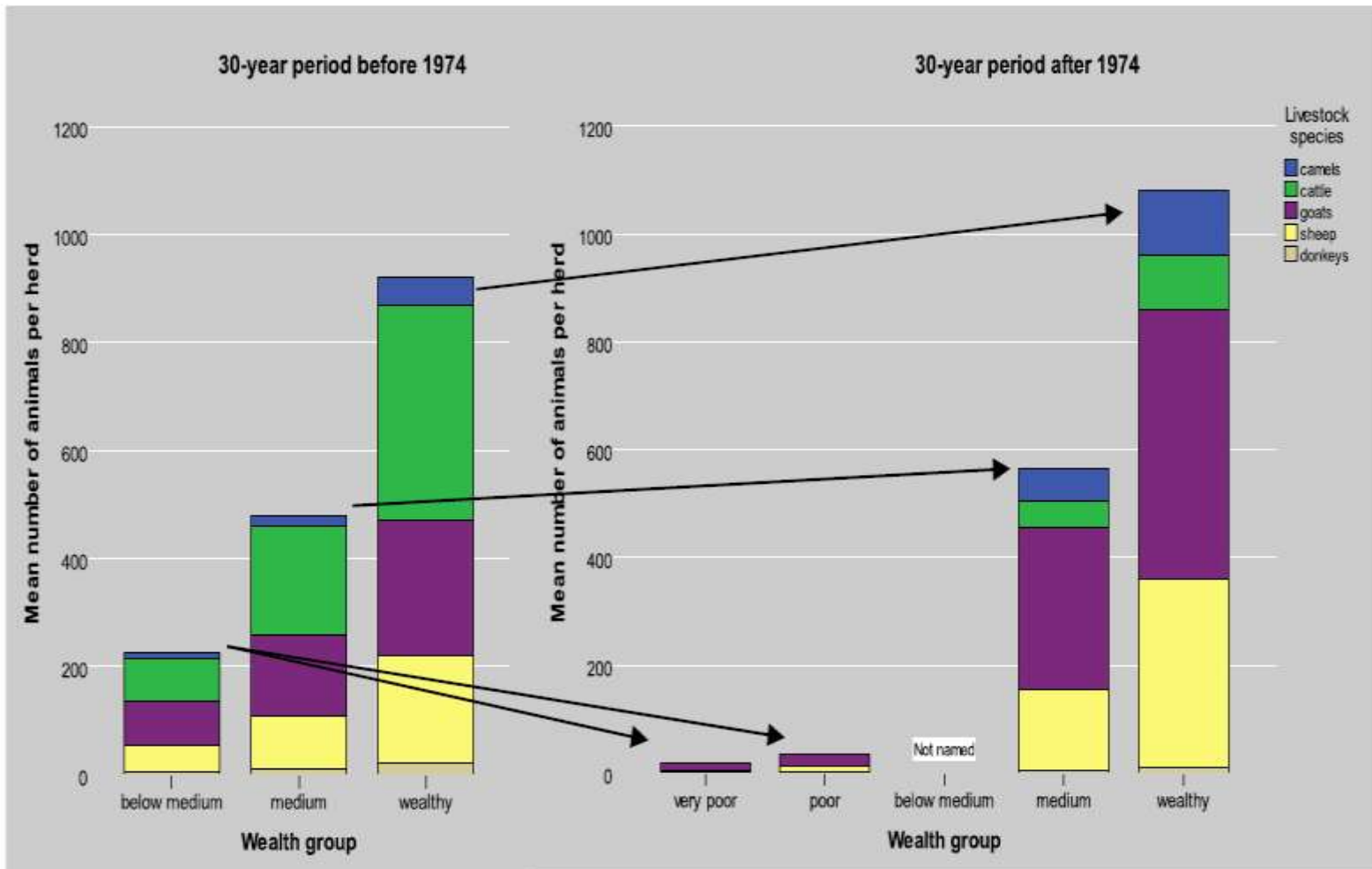
- Food production
- Combine transfers with market development
- Incorporate nutrition





European  
Commission

Figure 2: The 'Moving up, Moving Out' scenario - trends in livestock ownership by wealth group over 60 years (1944-2004), Shinile zone, Somali Region



# Financing (1)

## Short-term (2012-13):

- focus on recovery of drought affected areas in Eastern Horn of Africa (Djibouti, Ethiopia, Kenya, Somalia)
- Specific package of about € 250 million, of which € 120 million additional funding

## Longer term (beyond 2013):

- address entire IGAD region
- ensure appropriate inclusion of 'resilience approach' in 11<sup>th</sup> EDF (where appropriate)

## Financing (2) – use of additional € 120 million

DG	Country/ies	Amount	Coverage
DEVCO	Kenya	€ 40 M	4 components: nutrition, water, livestock, livelihoods
DEVCO	Ethiopia	€ 50 M	6 components: nutrition, safety net (risk financing mechanism), livestock, livelihoods, watershed management and coordination
DEVCO	Djibouti	€ 8 M	Water provision and management
ECHO	Regional, focus on Somalia and Kenya	€ 22 M	Food assistance, security, livelihood assistance, health, WASH and coordination

# Ethiopia – development cooperation

Rural Development and Food Security is focal sector of cooperation 10<sup>th</sup> EDF - € 130 million

- Focus on Productive Safety Net Programme (PSNP), plus:
- Agricultural Marketing
- Livestock Health
- Forest Management

Also support from other financing sources -> many NGO projects in agriculture, rural water supply, rural energy etc.

## Ethiopia (2) – 2011 drought response

Quick additional support after 2011 drought funded from Instrument for Stability - € 13.7 million

Focus on agriculture, livestock, local governance

Implementation by NGOs

Following up from earlier projects or from ECHO interventions

# Small scale irrigation/land reclamation



## Ethiopia (3) Additional SHARE finance

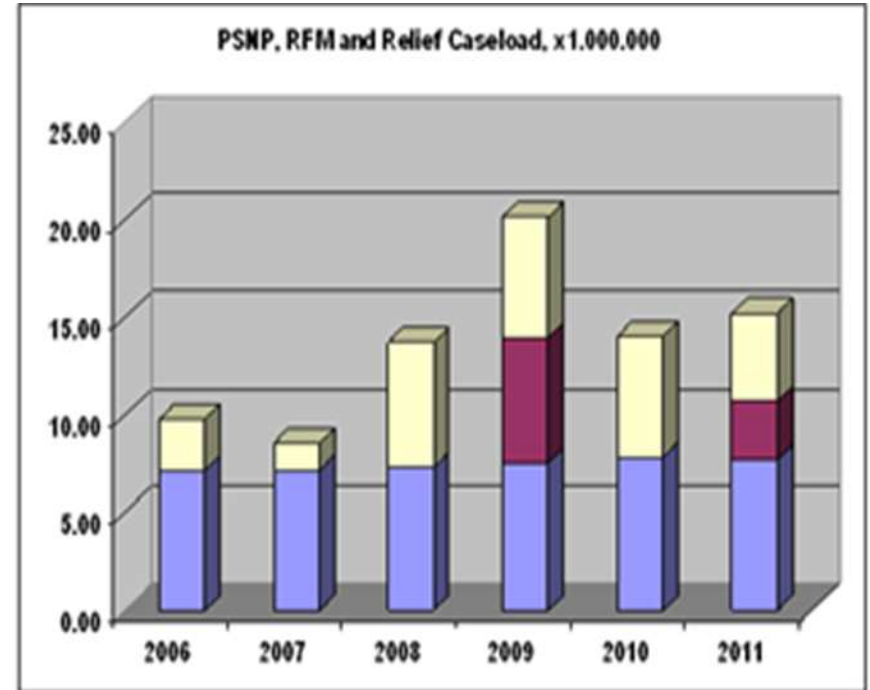
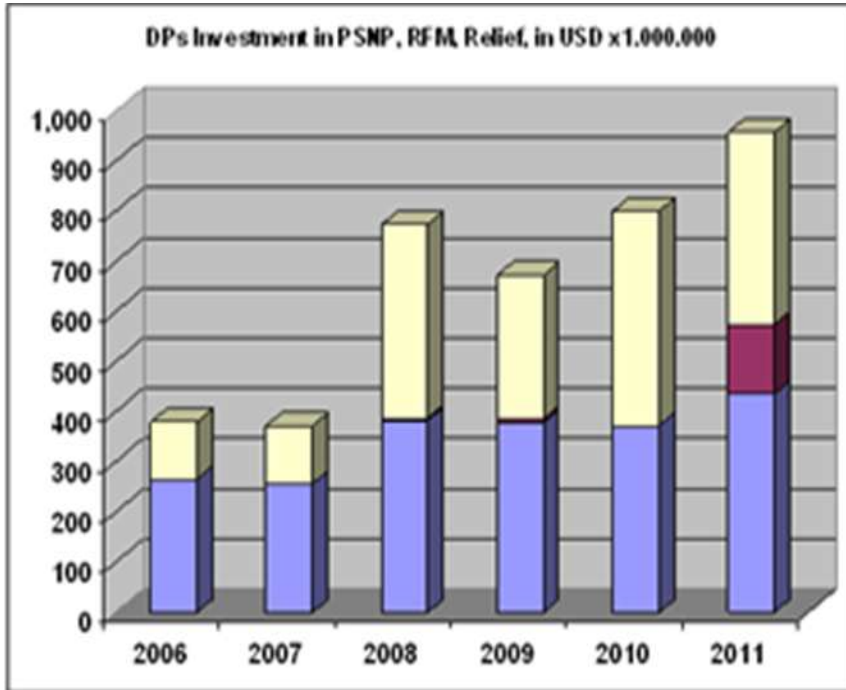
€ 50 million allocated, summer 2012

Programme being formulated; components:

- Risk Financing Mechanism of PSNP
- Nutrition
- Livestock health and marketing
- Livelihood support
- Watershed Management
- Local level capacity building on coordination/planning



European  
Commission



PSNP RFM Relief



# Ethiopia – ECHO/DEVCO planning

## ECHO 2013:

- Drought response/resilience as one of three pillars
- Multi-sectoral approach; nutrition as 'entry point'
- Implementation in about 8 clusters of woredas
- Contracts of 18 months (multi-annual vision)

## DEVCO:

- 11<sup>th</sup> EDF programming – sectoral cooperation in agriculture, food security and health foreseen
- Complementarity to ECHO work in clusters

# HoA/SHARE Coordination

## Achievements:

- HQ level - Global Alliance; incl. joint donor mission to Ethiopia and Kenya, November 2012
- IGAD level – Regional Platform
- Country level – around national focal points in framework of 'Ending Drought Emergencies'

## Challenges:

- institutionalising humanitarian-development exchanges
- Implementation at sub-national level