



## Green Deal Country Fiche

### Brunei Darussalam

**Population in 2019**  
0,43 million habitants

**Projected population in 2050**  
0,49 million habitants

**Surface**  
5,8 thousands km²

**Population density (2019)**  
75 habitants per km²

**GDP per capita**  
31.086,75 US\$ (2019)

**Population living below 1,90 \$/day**  
NA

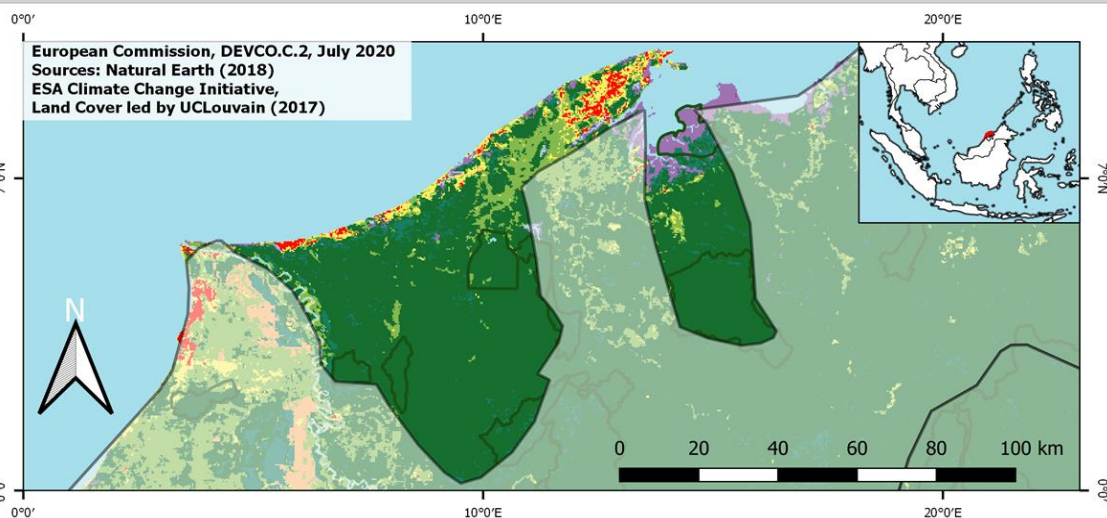
**Human Development Index**  
0,84 (2019, UN target: >0,8)

#### Legend

Main Protected Areas

#### Land Cover Classes

- Cropland rainfed
- Cropland irrigated
- Mosaic crops/nat.veg
- Tropical dense forest
- Deciduous forest
- Coniferous forest
- Mixed forest
- Shrubland
- Grassland
- Sparse vegetation
- Swamp forest
- Mangrove
- Swamps
- Urban areas
- Bare areas
- Water bodies
- Permanent snow and ice



**Share of global emissions (2018)**  
0,022%

#### NDC: Mitigation Summary

(NDC from 2020)

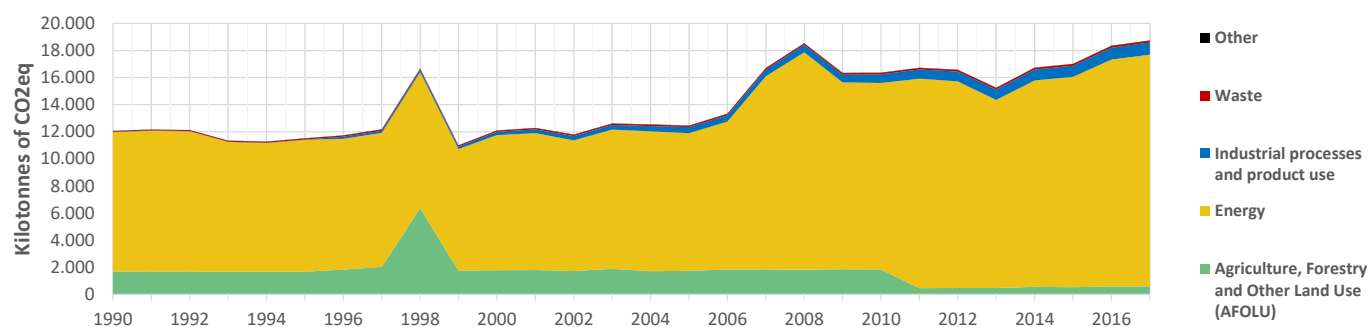
Brunei Darussalam commits to reduce its GHG emissions by 20% by 2030 below the BAU levels estimated at approximately 29.5 MtCO2eq. Key sectors covered: Energy, Industrial Processes and Product Use, Agriculture, Forestry and Other Land Use, and Waste.

#### INTPA "NDC Group"

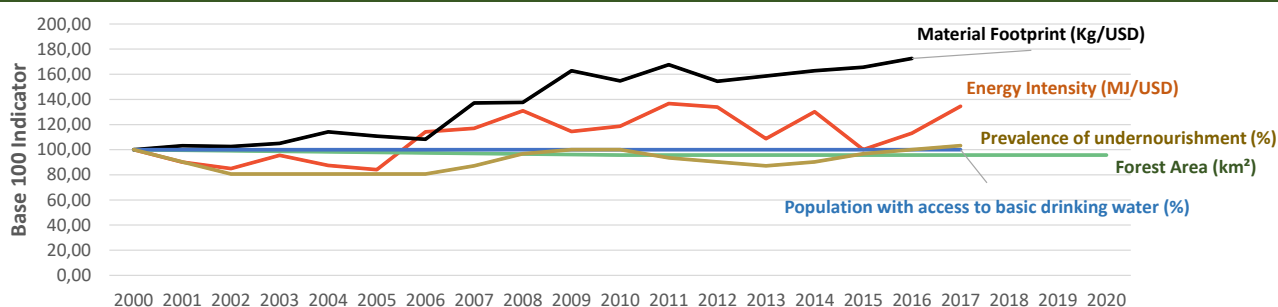
NA

Pillar	Indicator Name and Unit	Value	Interpretation
Green, circular and low-carbon economy	<b>Ecological footprint</b> (Consumption in global hectares per capita, 2017)	6 gh/cap	Above the global sustainable threshold of 1,6 gha per capita
	<b>Recycling and composting rate</b> (% of total solid waste, 2017)	NA	No Data
	<b>Water productivity</b> (USD of GDP per m³ of water extracted, 2017)	NA	No Data
	<b>Material footprint</b> (Kg of raw materials used per USD of GDP, 2010)	0,61 kg/\$	Smaller footprint than the EU-27 average of 0,97 kg/USD
	<b>Sustainable Consumption and Production Policy Framework</b> (2017)	D	No policy framework for SCP has been reported to the UN
	<b>Change in emissions (production) vs change in GDP</b> (2007-2017)	+6% / -1%	Unsustainable growth path: emissions are growing faster than GDP
Biodiversity & Forests	<b>Terrestrial protected areas</b> (% of total land area, 2020)	43,97%	CBD Target has been met for terrestrial ecosystems (17% by 2020)
	<b>Threatened species</b> (% of total evaluated species, 2019)	11,26%	High share of threatened species, risk missing SDG target 15.5
	<b>Population around protected areas</b> (% total pop., 10km buffer, 2015)	83,00%	Very significant share of population - Landscape approach is key
	<b>Forest area change</b> (% change between 2015 and 2020)	0 %	Forest cover at equilibrium, SDG Target 15.2 achieved
	<b>Sustainable forest management</b> (% area with long-term plan, 2020)	NA	No Data
	<b>Employment in forestry</b> (number of full-time equivalents, 2015)	NA	No Data
Green and Smart Cities	<b>Proportion of urban population living in slums</b> (% in 2016)	NA	No Data
	<b>Satisfaction with public transport</b> (% satisfied, 2018)	NA	No Data
	<b>Solid waste uncollected or dumped in the open</b> (% of total, 2017)	40-60%	Significant efforts are needed to meet SDG Target 11.6
	<b>Wastewater receiving primary treatment</b> (% of total)	15,04%	Significant efforts needed to ensure at least full primary treatment
	<b>Urban air pollution</b> (µg/m³ of PM 2.5 particules, 2016)	5,78 µg/m³	Within the World Health Organization guideline value of 10 µg/m³
	<b>Alignment of national DRR strategies to Sendai Framework</b> (0-1 Score)	NA	No Data
Sustainable Energy	<b>Access to electricity</b> (% of population, 2018)	100,00%	SDG Target 7.1 has been achieved
	<b>Renewable energy</b> (% of total energy consumption, 2016)	0,01%	Very low share of renewables, low contribution to SDG Target 7.2
	<b>Renewable electricity</b> (% of electricity production, 2015)	0,05%	Very low share of renewables, low contribution to SDG Target 7.2
	<b>Access to clean cooking</b> (% of total population with access, 2018)	>95%	Universal access to clean cooking has been achieved
	<b>Fossil fuel subsidies</b> (% of GDP, 2015)	0,79%	Medium share of FF subsidies, above all EU MS values
	<b>Energy Intensity</b> (megajoules per constant 2011 PPP GDP, 2017)	4,91 MJ/\$	Energy Intensity above EU average, but still within range of EU MS
Food systems: from Farms to Forks	<b>Rural poverty</b> (% of rural population below 1\$90 a day, 2018)	NA	No Data
	<b>Food security</b> (% of population in food crisis or worse, 2019)	NA	No Data
	<b>Nutrition</b> (% of children under 5 who are stunted, 2019)	NA	No Data
	<b>Fertilizer consumption</b> (kg per hectare, 2016)	141,8 kg/ha	Within range of EU MS values (below EU overall use of 153 kg/ha)
	<b>Land degradation</b> (national area with declining productivity 1999-2013)	0,45%	Progress is still needed to meet SDG Target 15.3 of 0% by 2030
	<b>Agriculture and FOLU share of emissions</b> (% of CO2eq in 2017)	3,08%	Low emission shares from Agriculture, Forestry and Other Land Use
Water & Oceans	<b>Population using at least basic drinking water</b> (% of pop., 2017)	99,90%	Some progress still needed to meet SDG Target 6.1 (100% by 2030)
	<b>Population using at least basic sanitation services</b> (% of pop., 2017)	96,35%	SDG Target 6.2 (100% by 2030) is on track for achievement, but
	<b>Water scarcity</b> (m³ of renewable freshwater per capita, 2014)	20646 m³/cap	Water shortages should be only irregular/local (>1700m³/capita)
	<b>Water stress</b> (water withdrawal as % of total available water, 2014)	1,88%	Low water stress (less than 25% of resource extraction)
	<b>Marine protected areas</b> (% of total marine area, 2020)	0,12%	Significant efforts needed to achieve CBD Target of 10% by 2020
	<b>Fish stocks overexploited or collapsed</b> (% of fish stocks, 2014)	No Data	No Data

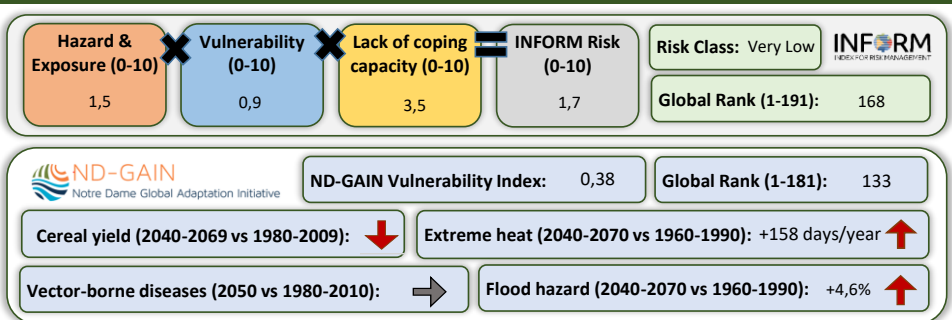
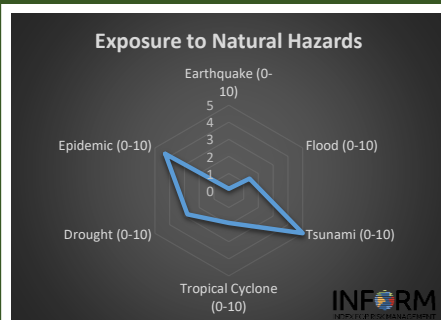
## Greenhouse Gas Emission History (Production-based)



## Historic Trends of selected indicators per Green Deal Pillar (Base 100)



## Climate Adaptation Needs



## Environmental Performance Index 2020

2020 EPI Country Rank (out of 180)

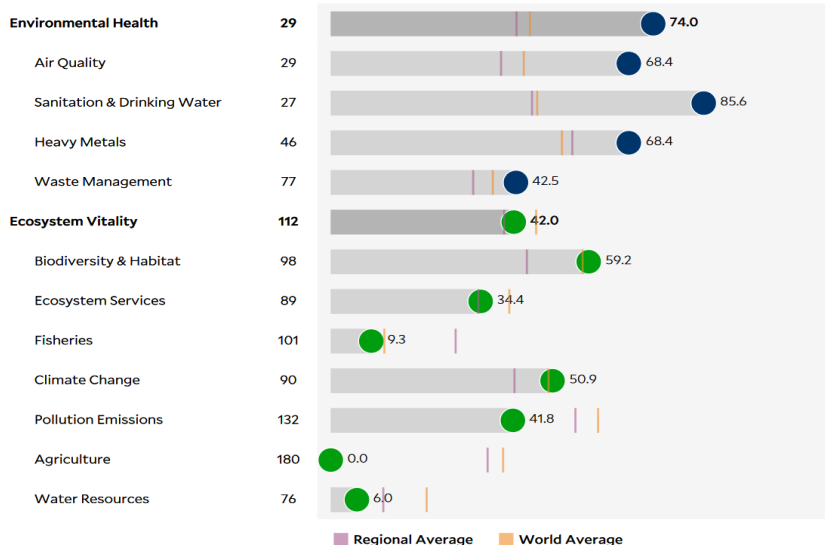
46

2020 EPI Score [0=worst, 100=best]

54,8

### Issue Categories

Rank [1/180]



## SDG Index 2020

(UN SDSN & Bertelsmann Stiftung)



### Legend:

- SDG achieved
- Challenges remain
- Significant challenges remain
- Major challenges remain
- Information unavailable