



Green Deal Country Fiche

Barbados

Population in 2019
0,29 million habitants

Projected population in 2050
0,28 million habitants

Surface
0,4 thousands km²

Population density (2019)
718 habitants per km²

GDP per capita
18.148,24 US\$ (2019)

Population living below 1,90 \$/day
NA

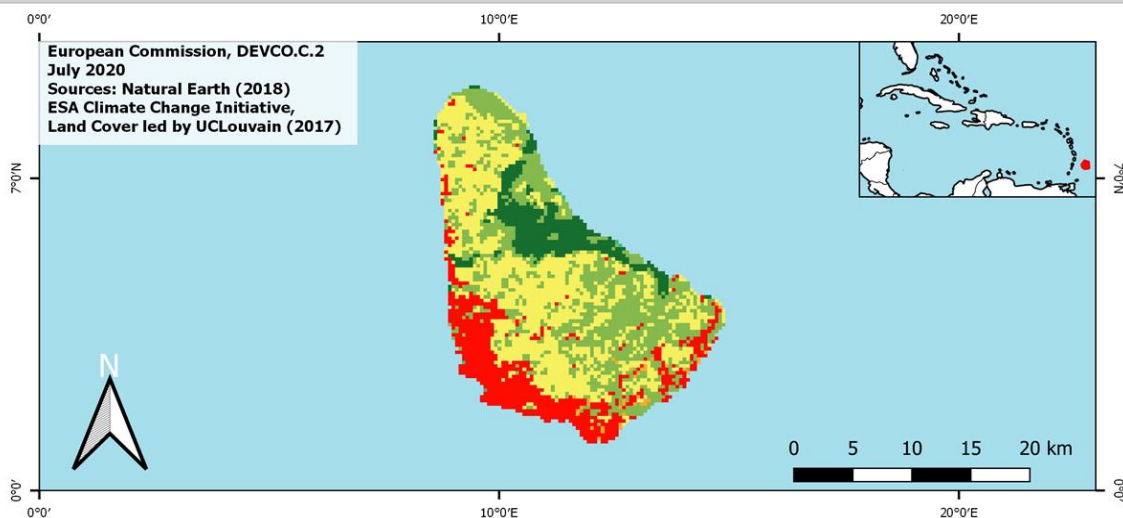
Human Development Index
0,81 (2019, UN target: >0,8)

Legend

Land Cover Classes

- Cropland rainfed
- Cropland irrigated
- Mosaic: crops/nat.veg
- Tropical dense forest
- Deciduous forest
- Coniferous forest
- Mixed forest
- Shrubland
- Grassland
- Sparse vegetation
- Swamp forest
- Mangrove
- Swamps
- Urban areas
- Bare areas
- Water bodies
- Permanent snow and ice

European Commission, DEVCO.C.2
July 2020
Sources: Natural Earth (2018)
ESA Climate Change Initiative,
Land Cover led by UCLouvain (2017)



Share of global emissions (2018)
0,004%

NDC: Mitigation Summary

(NDC from 2016)

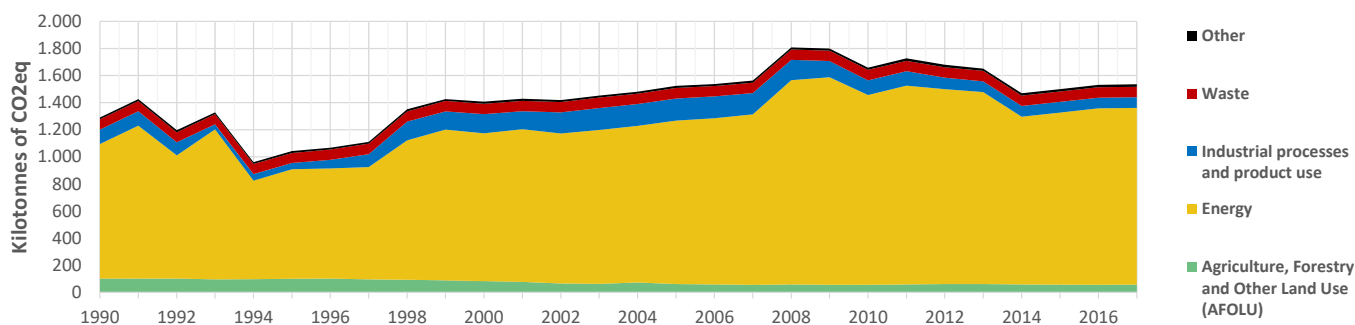
Barbados intends to reduce its GHG emissions of 44% compared to BAU by 2030 (meaning a reduction of 23% compared to 2008).
Focus sectors : Energy, Industrial Process and Product Use, Waste, Agriculture, Land Use Change and Forestry.

INTPA "NDC Group"

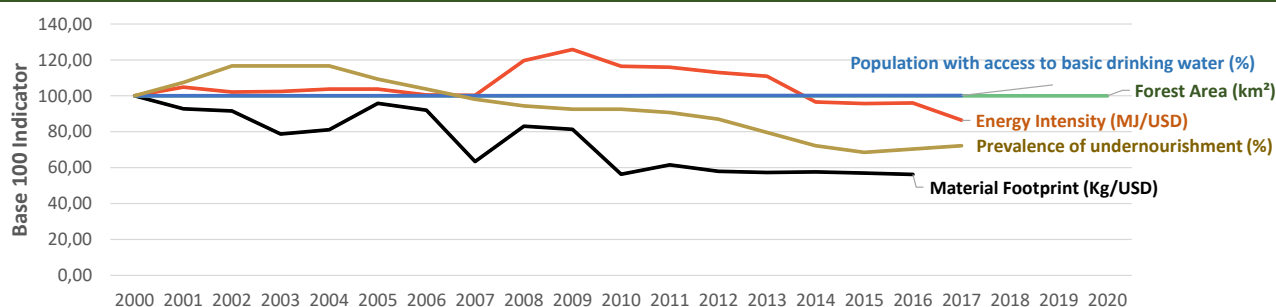
Group 3 - Suggested focus on adaptation for EU cooperation

Pillar	Indicator Name and Unit	Value	Interpretation
Green, circular and low-carbon economy	Ecological footprint (Consumption in global hectares per capita, 2017)	3,73 gh/cap	Above the global sustainable threshold of 1,6 gha per capita
	Recycling and composting rate (% of total solid waste, 2017)	5-10%	Low recycling and composting rate (overall EU-27 value = 45%)
	Water productivity (USD of GDP per m³ of water extracted, 2017)	51,81 \$/m³	Less water efficient than EU average, but within range of EU MS
	Material footprint (Kg of raw materials used per USD of GDP, 2010)	0,69 kg/\$	Smaller footprint than the EU-27 average of 0,97 kg/USD
	Sustainable Consumption and Production Policy Framework (2017)	D	No policy framework for SCP has been reported to the UN
	Change in emissions (production) vs change in GDP (2007-2017)	-13% / +7%	Absolute decoupling: emissions have decreased in absolute terms
Biodiversity & Forests	Terrestrial protected areas (% of total land area, 2020)	1,27%	Significant efforts are needed to meet CBD Target of 17% by 2020
	Threatened species (% of total evaluated species, 2019)	22,74%	High share of threatened species, risk missing SDG target 15.5
	Population around protected areas (% total pop., 10km buffer, 2015)	80,69%	Very significant share of population - Landscape approach is key
	Forest area change (% change between 2015 and 2020)	0 %	Forest cover at equilibrium, SDG Target 15.2 achieved
	Sustainable forest management (% area with long-term plan, 2020)	NA	No Data
	Employment in forestry (number of full-time equivalents, 2015)	NA	No Data
Green and Smart Cities	Proportion of urban population living in slums (% in 2016)	NA	No Data
	Satisfaction with public transport (% satisfied, 2018)	NA	No Data
	Solid waste uncollected or dumped in the open (% of total, 2017)	17%	Further efforts are needed to meet SDG Target 11.6
	Wastewater receiving primary treatment (% of total)	11,05%	Significant efforts needed to ensure at least full primary treatment
	Urban air pollution (µg/m³ of PM 2.5 particules, 2016)	22,35 µg/m³	Above EU 2020 target (18µg/m³) but below US Standard (35µg/m³)
	Alignment of national DRR strategies to Sendai Framework (0-1, 2018)	0,98	Substantial alignment with the Sendai Framework (1)
Sustainable Energy	Access to electricity (% of population, 2018)	100,00%	SDG Target 7.1 has been achieved
	Renewable energy (% of total energy consumption, 2016)	2,77%	Very low share of renewables, low contribution to SDG Target 7.2
	Renewable electricity (% of electricity production, 2015)	0,00%	Very low share of renewables, low contribution to SDG Target 7.2
	Access to clean cooking (% of total population with access, 2016)	>95%	Universal access to clean cooking has been achieved
	Fossil fuel subsidies (% of GDP, 2015)	0,19%	Within the range of subsidy shares from EU-27 MS
	Energy Intensity (megajoules per constant 2011 PPP GDP, 2017)	3,25 MJ/\$	Energy Intensity within range of EU-MS, below the EU-27 average
Food systems: from Farms to Forks	Rural poverty (% of rural population below 1\$90 a day, 2018)	NA	No Data
	Food security (% of population in food crisis or worse, 2019)	NA	No Data
	Nutrition (% of children under 5 who are stunted, 2012)	7,70%	Progress is still needed to meet SDG Target 2.2 of 0% by 2030
	Fertilizer consumption (kg per hectare, 2016)	113,8 kg/ha	Within range of EU MS values (below EU overall use of 153 kg/ha)
	Land degradation (national area with declining productivity 1999-2013)	0,00%	SDG Target 15.3 has been achieved
	Agriculture and FOLU share of emissions (% of CO2eq in 2017)	3,68%	Low emission shares from Agriculture, Forestry and Other Land Use
Water & Oceans	Population using at least basic drinking water (% of pop., 2017)	98,49%	Some progress still needed to meet SDG Target 6.1 (100% by 2030)
	Population using at least basic sanitation services (% of pop., 2017)	97,30%	SDG Target 6.2 (100% by 2030) is on track for achievement, but
	Water scarcity (m³ of renewable freshwater per capita, 2014)	282 m³/cap	Absolute water scarcity (less than 500m³ per person per year)
	Water stress (water withdrawal as % of total available water, 2014)	87,50%	High water stress. Minimum environmental flow compromised.
	Marine protected areas (% of total marine area, 2020)	0,04%	Significant efforts needed to achieve CBD Target of 10% by 2020
	Fish stocks overexploited or collapsed (% of fish stocks, 2014)	52,18%	SDG Target 14.4 (0% by 2020) not met, significant efforts needed

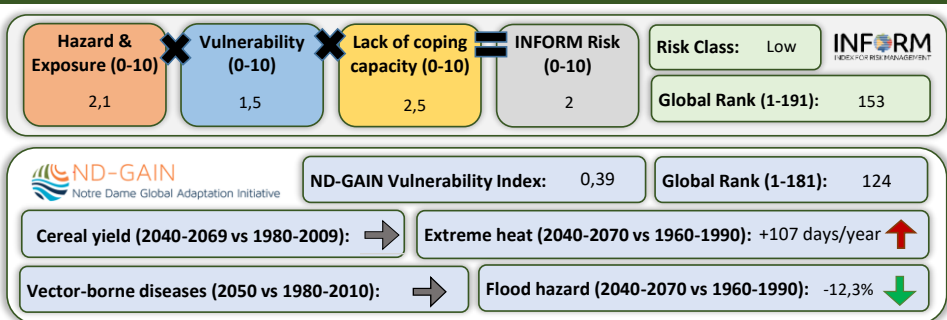
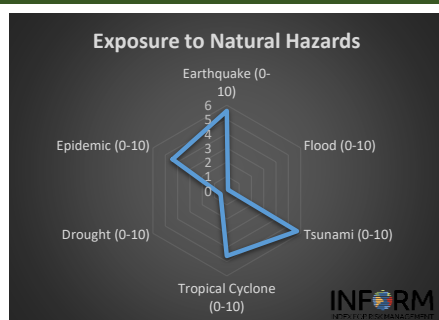
Greenhouse Gas Emission History (Production-based)



Historic Trends of selected indicators per Green Deal Pillar (Base 100)



Climate Adaptation Needs



Environmental Performance Index 2020

2020 EPI Country Rank (out of 180)

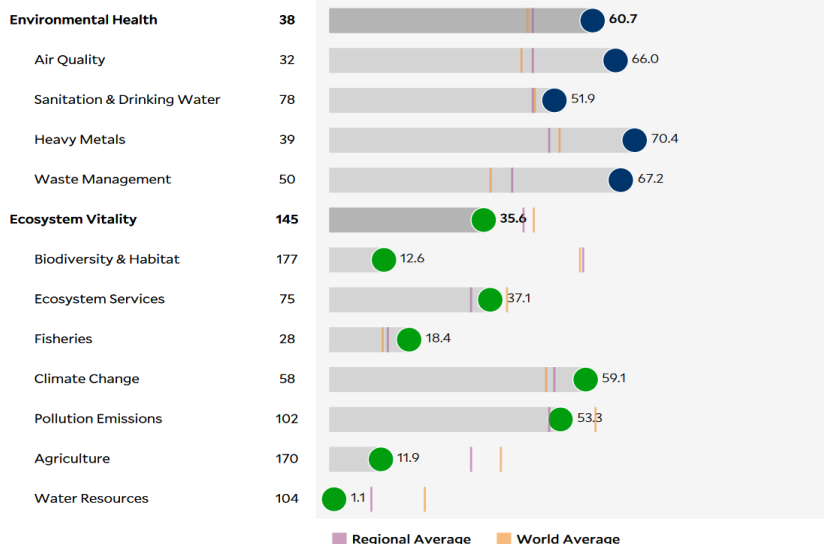
77

2020 EPI Score [0=worst, 100=best]

45,6

Issue Categories

Rank [/180]



SDG Index 2020

(UN SDSN & Bertelsmann Stiftung)



Legend:

- SDG achieved
- Challenges remain
- Significant challenges remain
- Major challenges remain
- Information unavailable