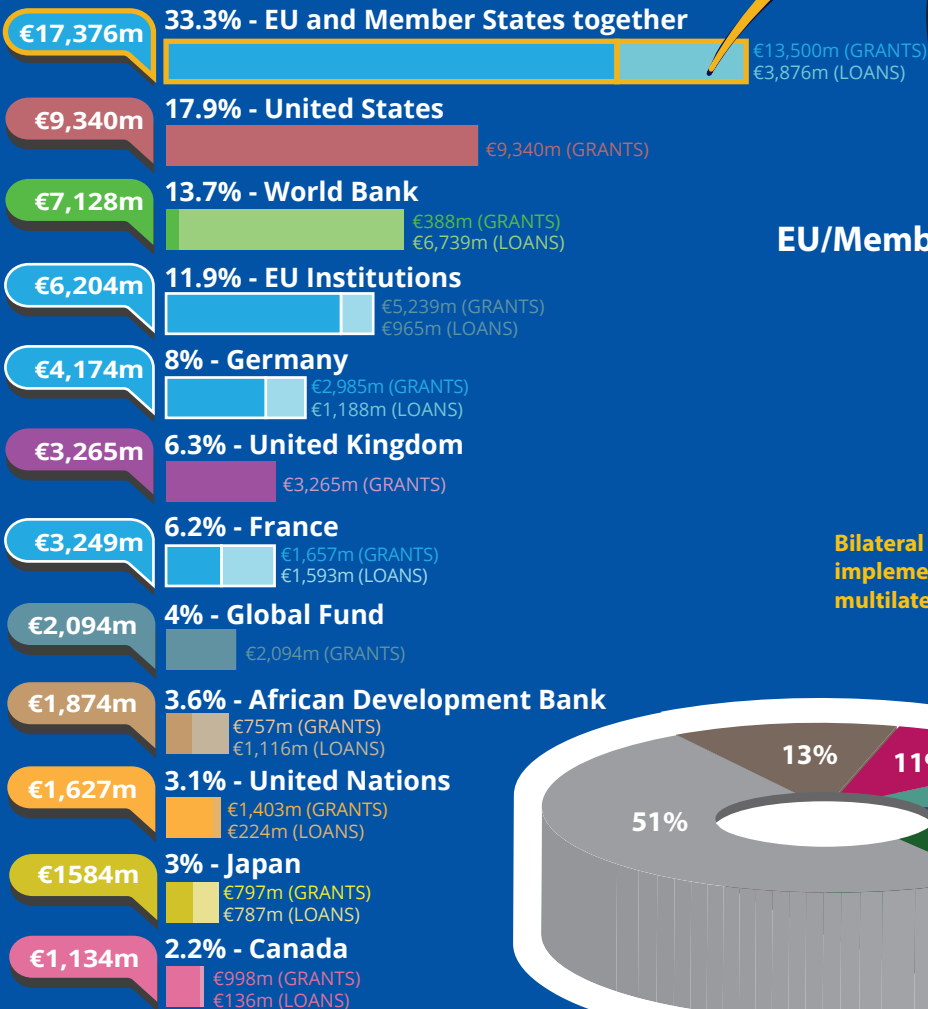




Africa's partners in 2018*

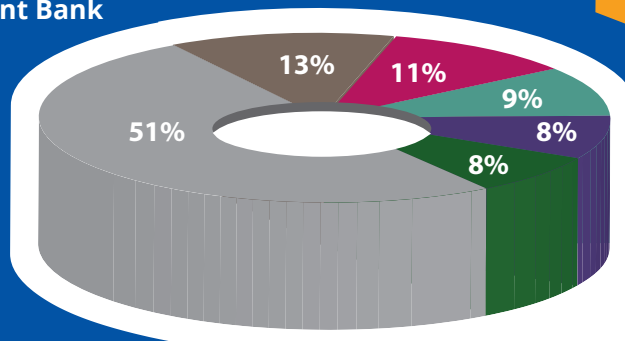
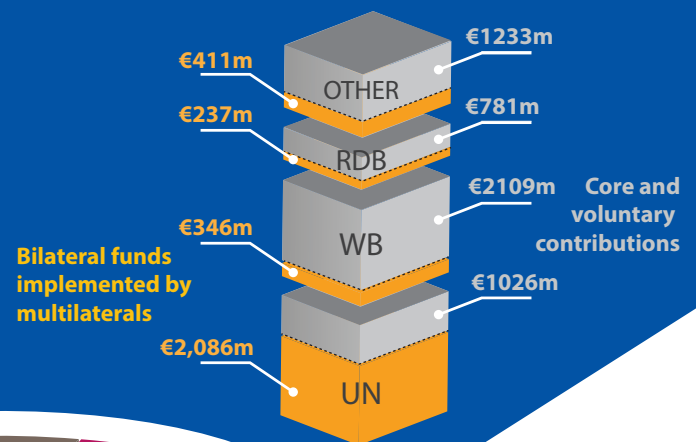


€22,526m
Total EU /
Member States
ODA

€17,376m EU/Member
States together
33.3% of global
bilateral flows

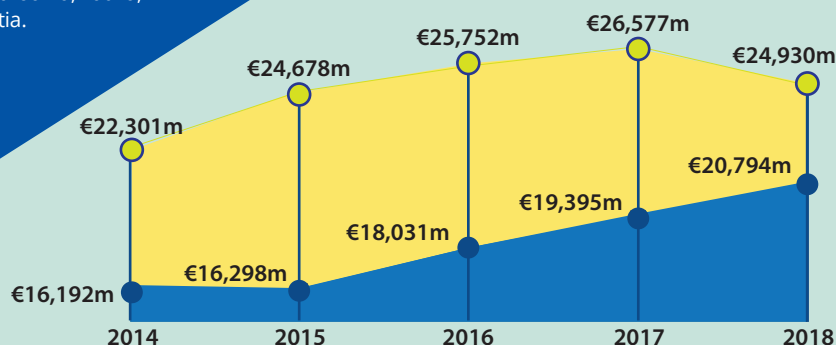
EU/MS
multilateral
core and
voluntary
contributions
€5,150m

EU/Member States funds through multilaterals



The main sectors funded by the EU/Member States

*Based on ODA disbursements
in the particular year.



For more information contact:

EEAS JOINT PROGRAMMING:
joint-programming-support@eeas.europa.eu

EU AID EXPLORER:
<https://euaideexplorer.ec.europa.eu>

DEVCO JOINT PROGRAMMING:
devco-joint-programming-support@ec.europa.eu

NEAR JOINT PROGRAMMING
NEAR-JOINT-PROGRAMMING@ec.europa.eu

Sources:

OECD DAC CRS
IMF WEO 2018 Database

Exchange rate: \$1 = €0.8473
(OECD exchange rate for 2018)

JOINT PROGRAMMING TRACKER:

<https://europa.eu/capacity4dev/joint-programming-tracker>

Note: EU/MS refers to the EU and its Member States together.

Differences between figures for total EU/MS ODA and ODA trends are due to use of different OECD data sources (with higher level of granularity in 2018).

RDBs = Regional Development Banks.





Investing in Sustainable Development in Africa



GDP €1,983 bn ↓

GDP per capita
Fiscal position

€1,558 ↓*
-4.2% ↑

Population 1,273.24m ↑

Poverty head count ratio at national poverty line 35.5%
Multidimensional poverty 28.6%



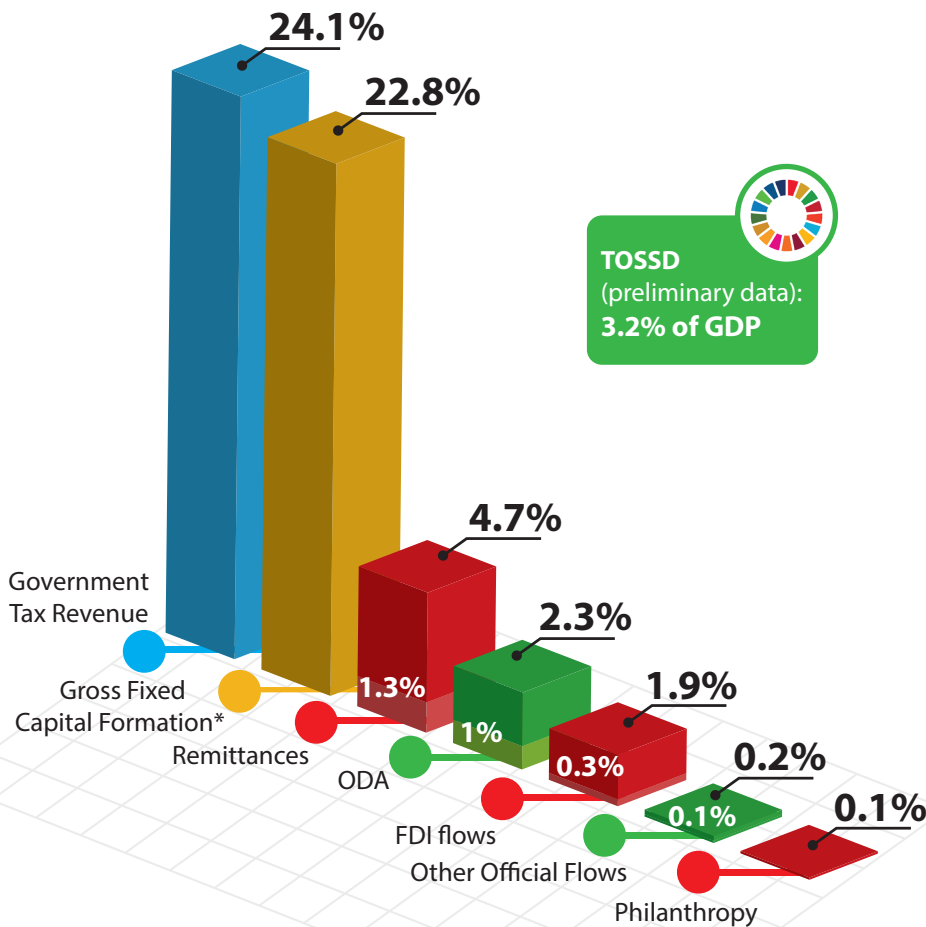
Trade figures (% of GDP)

Imports of goods	23.1	↓	Imports of services	7.7	↑
Exports of goods	20.7	↑	Exports of services	5.1	↑



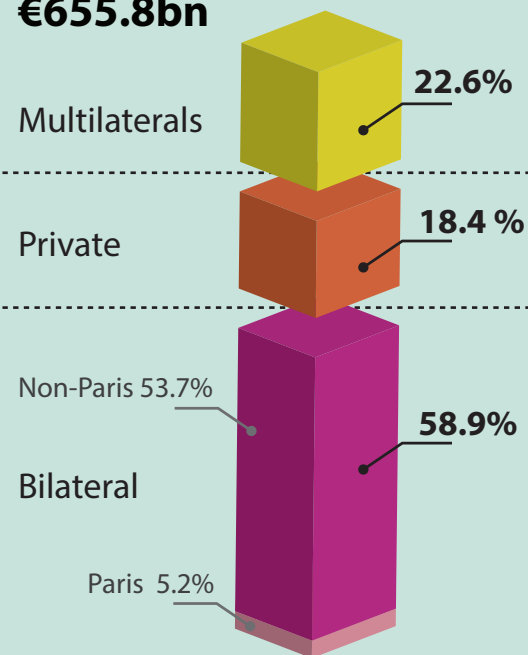
* Compared to average of previous years

Financing for Development as % share of GDP



External debt stock

€655.8bn



Public domestic Private domestic
Public international Private international EU/MS shares

For more information contact:

EuropeAid-FINANCING-FOR-SUSTAINABLE-DEVELOPMENT@ec.europa.eu

Exchange rate: \$1 = €0.8473
(OECD exchange rate for 2018)

Sources:

OECD DAC CRS, World Bank WDI
UNDP, EDGAR, JRC, World Bank
Remittances database, Eurostat
and IMF External Debt Statistics

Note: EU/MS refers to the EU and Member States together

For more information on TOSSD: www.tossd.org

*Measure of total investment in the domestic economy (overlap with FDI possible)

Paris refers to debts to the Paris Club of creditors (22 countries)

