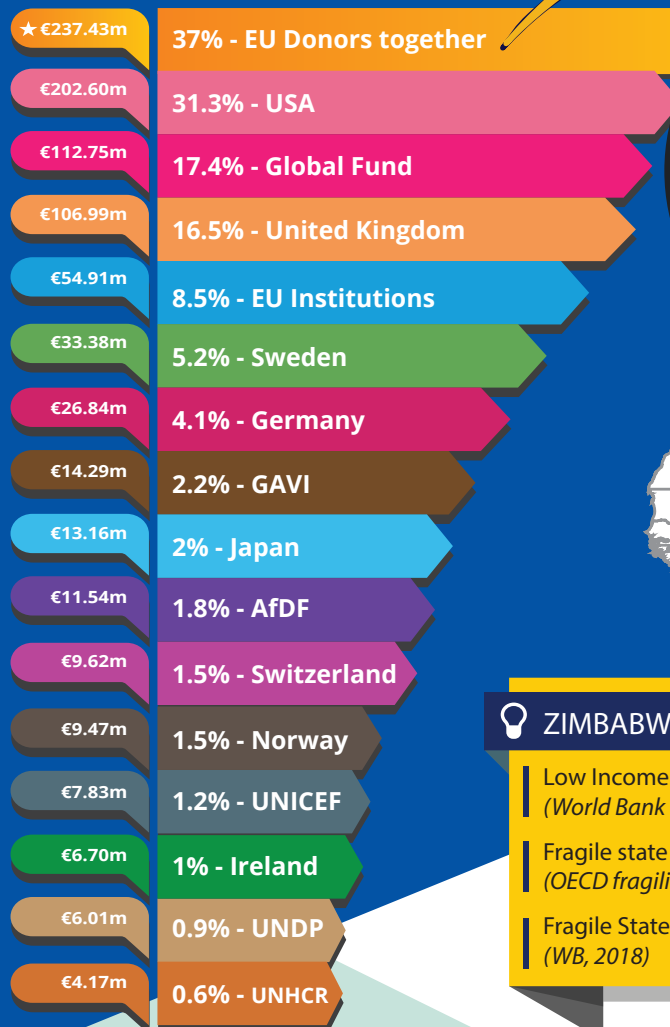




Zimbabwe largest donors in 2017



€244.33m
Total EU ODA

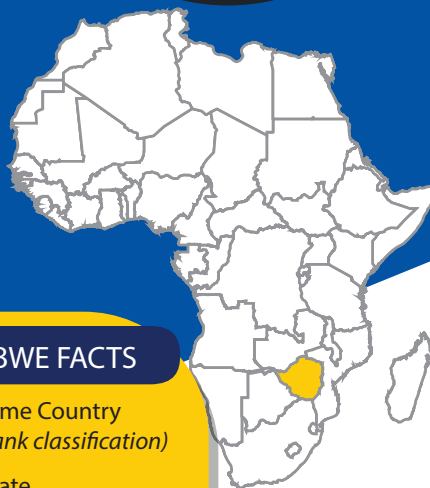
EU donors together €237.43m
37% of bilateral flows

UN
agencies
€6.92m

EU non-bilateral aid

ZIMBABWE FACTS

- Low Income Country
(World Bank classification)
- Fragile state
(OECD fragility index)
- Fragile State
(WB, 2018)



Aid as % share of GDP

*Government revenue: Revenue consists of taxes, social contributions, grants receivable, and other revenue.

GDP **€15.52bn**

Government revenue **22.54%**

Remittances **9.89%**

FDI **1.41%**

Total ODA **4.17%**

EU ODA **1.53%**

The main sectors funded by the EU

€38.28m

Government
& Civil
Society

€20.02m

Agriculture,
Forestry
& Fishing

€71.29m

Health

EU bilateral aid implemented through

UN agencies
€110.87m

WB Group
€2.63m

Other multilaterals
€1.04m

The EU and the Member States channel funds through a range of international organisations.
This infographic may not fully capture all of the funds.

For more information contact:

EEAS JOINT PROGRAMMING:
joint-programming-support@eeas.europa.eu

EU AID EXPLORER:
https://euaidexplorer.ec.europa.eu

DEVCO JOINT PROGRAMMING:
devco-joint-programming-support@ec.europa.eu

Sources:

OECD DAC CRS: <https://stats.oecd.org/org/qwids/>
MF WEO 2018 Database:
<http://www.imf.org/external/pubs/ft/weo/2018/01/weodata/index.aspx>
Exchange rate: \$1 = €0.887397 (OECD exchange rate for 2017)

JOINT PROGRAMMING TRACKER:
<https://europa.eu/capacity4dev/joint-programming-tracker>

Note: EU refers to EU Institutions and Member States together

