



Developing data-visualisation tools and training of health managers in using real-time information for decision-making in Bangladesh

Dr. Jannatul Ferdous, MD, MPH
3rd November, Stockholm, Sweden

Outline

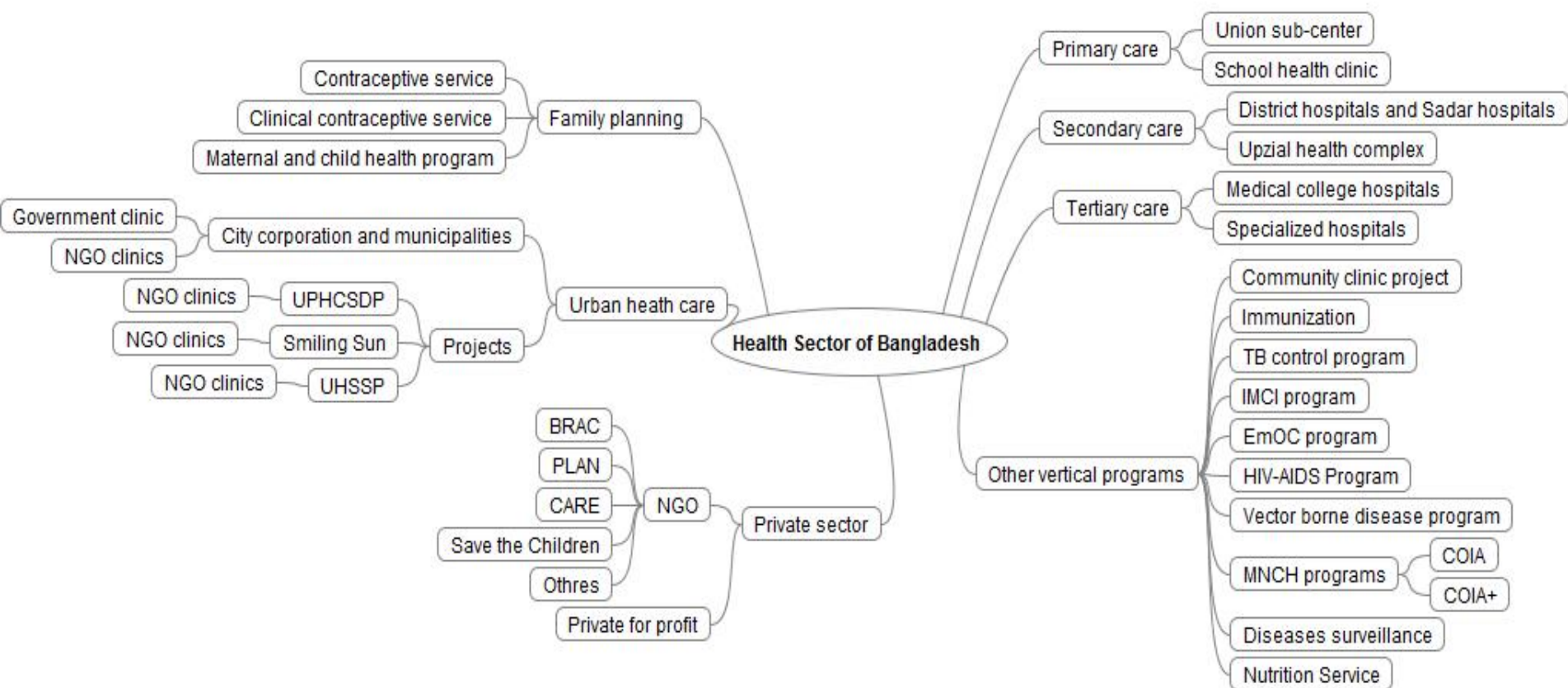
1. Bangladesh facts
2. DHIS2 and other HMIS software in Bangladesh
3. Data visualisation and public dashboards for decision making
4. Training of health managers and feedback on data quality
5. Implications
6. Challenges and way forward

Bangladesh facts

- ❑ 1,47,570 sq km
- ❑ 8 divisions, 64 districts , 489 upazilas, 4553 unions
- ❑ City corporations: 11; Municipalities : 321
- ❑ Total population (2016): 163 million
- ❑ Population density per sq.km : 1049
- ❑ Per capita GDP (2015) : US\$ 1358.8
- ❑ Global Human Development Index (2015) : 139



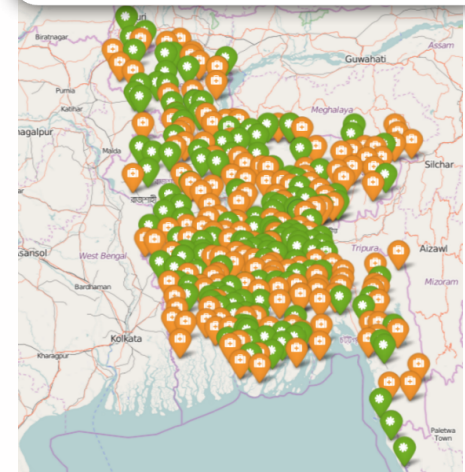
Pluralistic Health System in Bangladesh



DHIS2 & other software: decision making tools



Attendance System



Complaint & Suggestions System

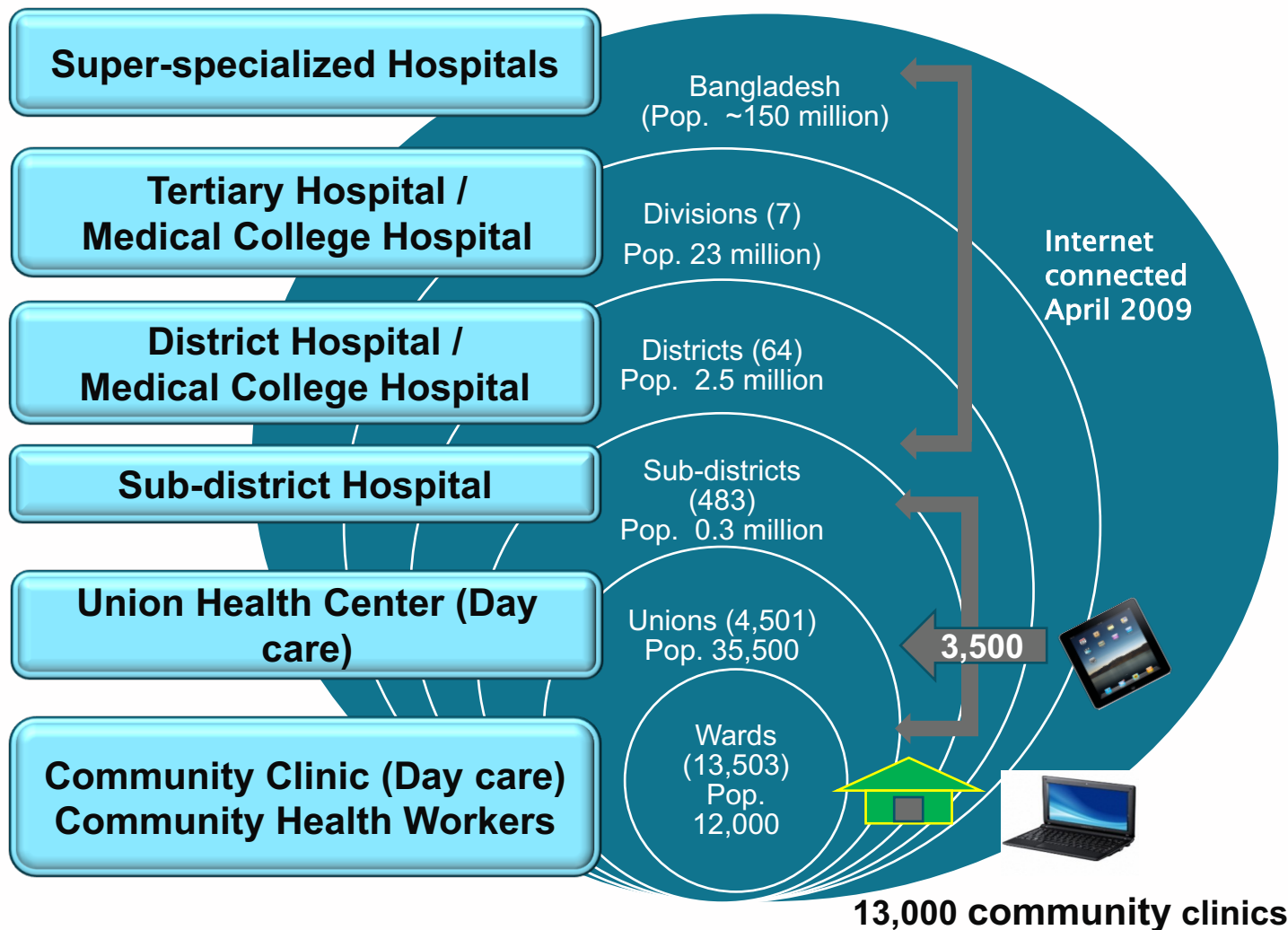
A nation-wide system for online data collection



About 600 hospitals

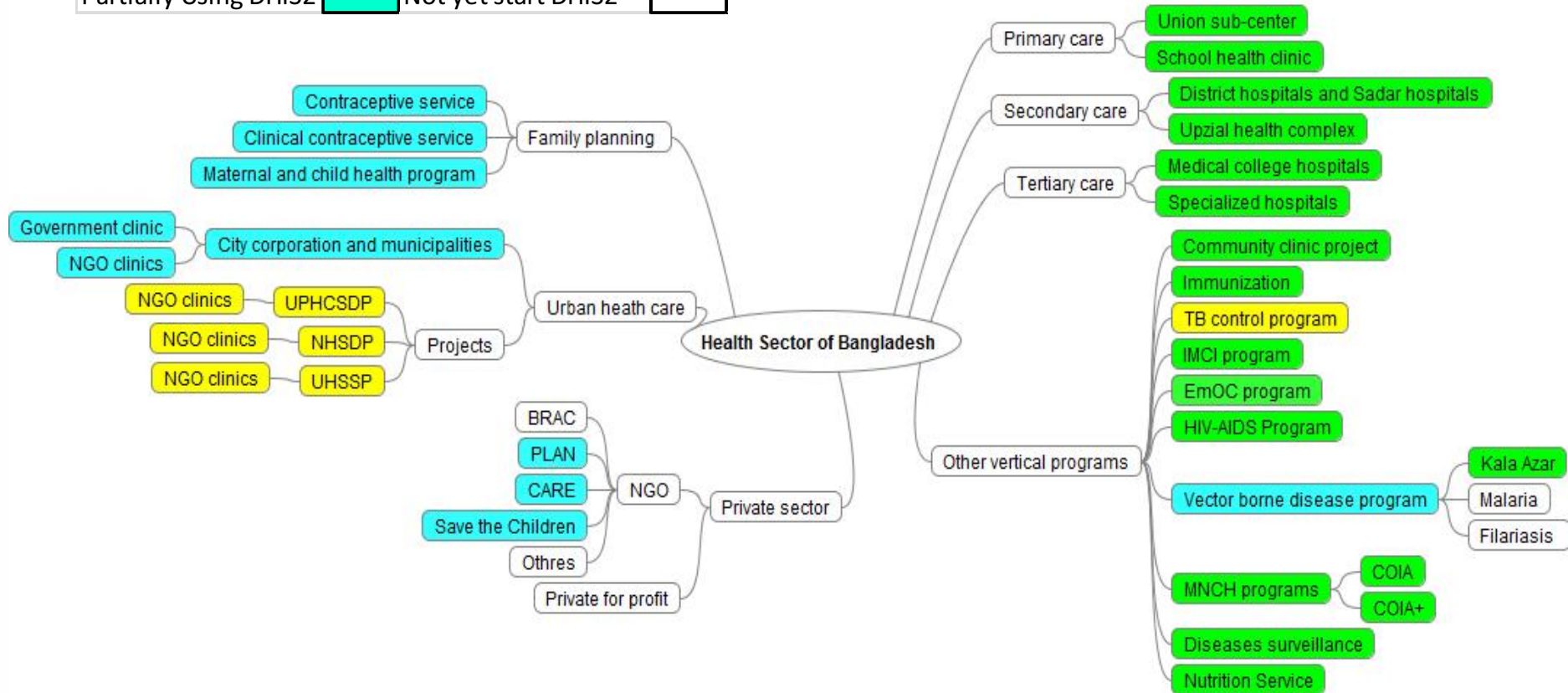
About 19,000 day-care facilities

About 100,000 health workforce

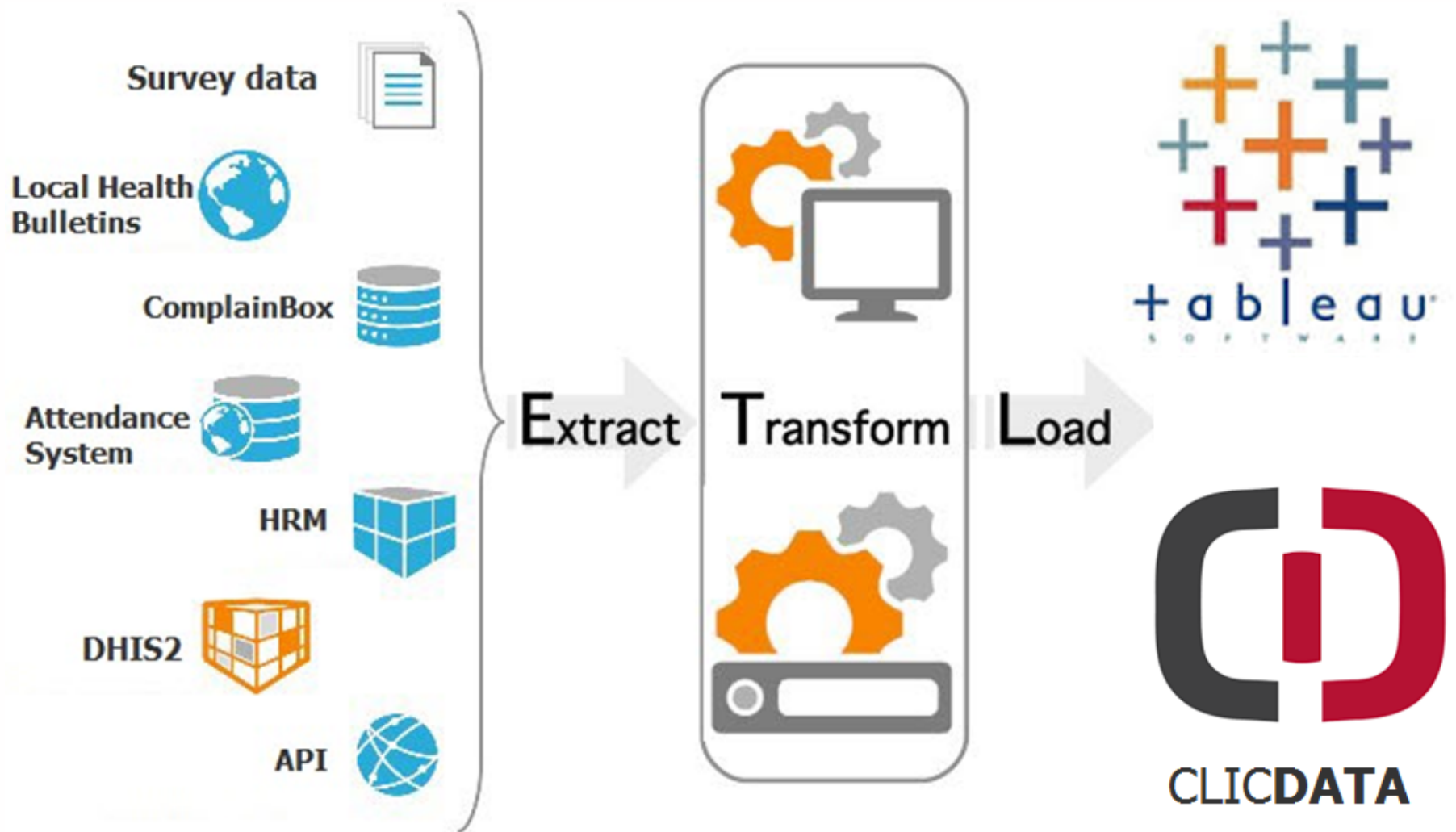


Data collection in DHIS2 in Bangladesh

Fully Using DHIS2		Planned to use DHIS2	
Partially Using DHIS2		Not yet start DHIS2	

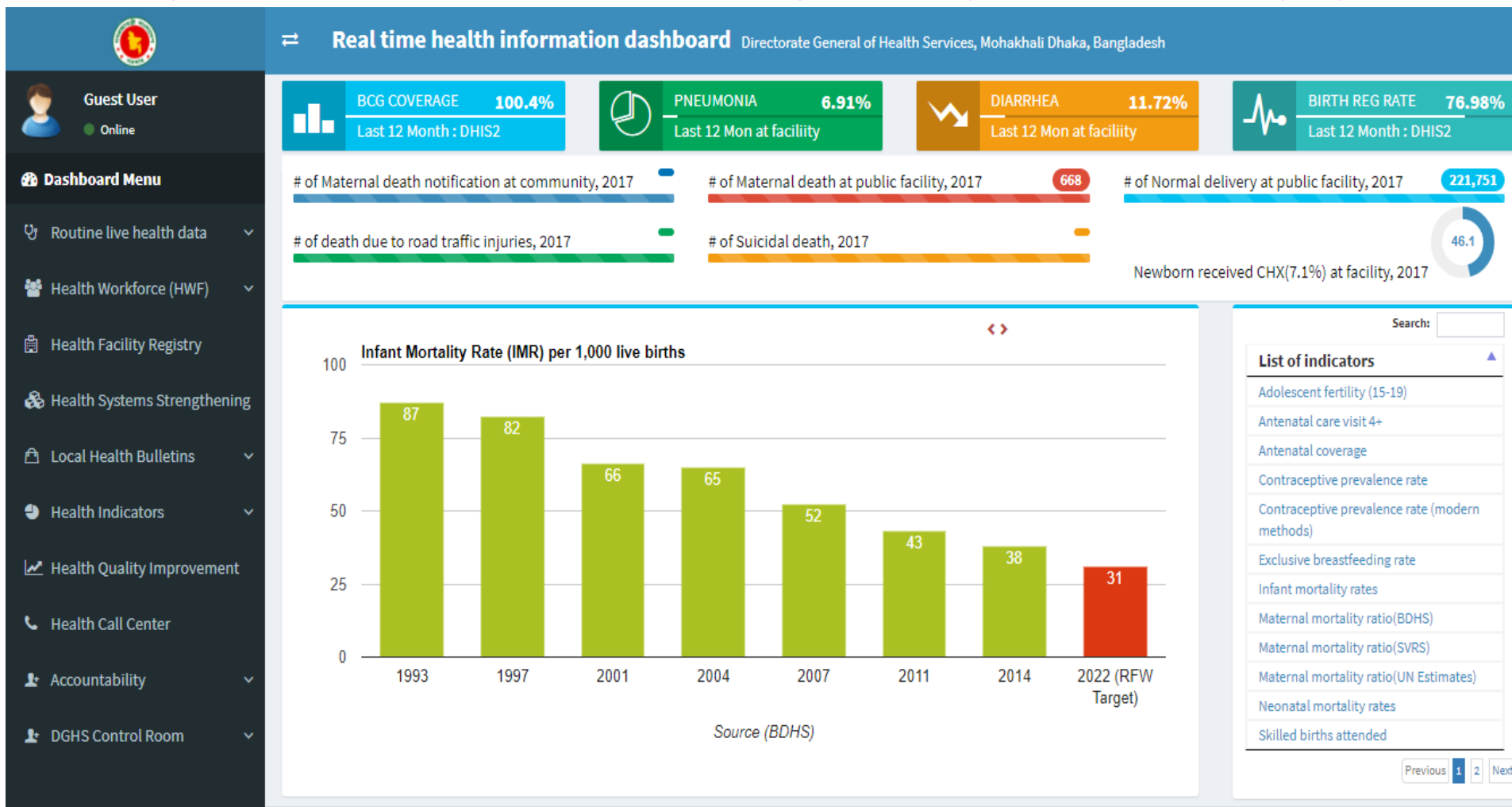


Development of Health Data-Warehouse



Innovative development of Public Web Portal

<http://103.247.238.81/webportal/pages/index.php>



Real time Local Health Bulletin for 13,000+ facility

Local Health Bulletin

Home - LHB

Upazila Health Complex/Office

District/ General hospital

Medical College Hospital

PG Institute & Hospital

Community Clinic

District Level Office

Divisional Level Office

National

Reporting Period: Feb 2017 Search

Sl	Facility type	Facility (no.)	No. reported	No. not reported	% Not reported
1	Specialty Postgraduate Institute & Hospital	12	5	7	58.3
2	Medical College Hospital	15	11	4	26.7
3	General Hospital (not district hospital)	10	8	2	20.0
4	200-250 bed Hospital (not district hospital)	20	19	1	5.0
5	District Hospital	35	32	3	8.6
6	Upazila Health Complex	431	421	10	2.3
7	District Level Office	71	60	11	15.5

- Health bulletin for sub-district level monitoring
- Health bulletin for district level monitoring
- Health bulletin for divisional level monitoring



The data belong to January-December 2016

Abhoynagar Upazila Health Complex

Upazila: Abhaynagar, District: Jessore, Division: Khulna



Management Information System (MIS)
Directorate General of Health Services (DGHS)
Ministry of Health & Family Welfare (MOHFW)
Mohakhali, Dhaka-1212

Innovation of scoring health facilities for System Strengthening (HSS)

Health systems performance measurement dashboard

Home



Upazila Health Complex



District hospital



Medical College Hospital



Super Specialized Hospital



Community Health Service



Civil Surgeon Office



Divisional Level Office

Useful Links

[Onsite Monitoring Tool](#)

Assesment Period Top Division District

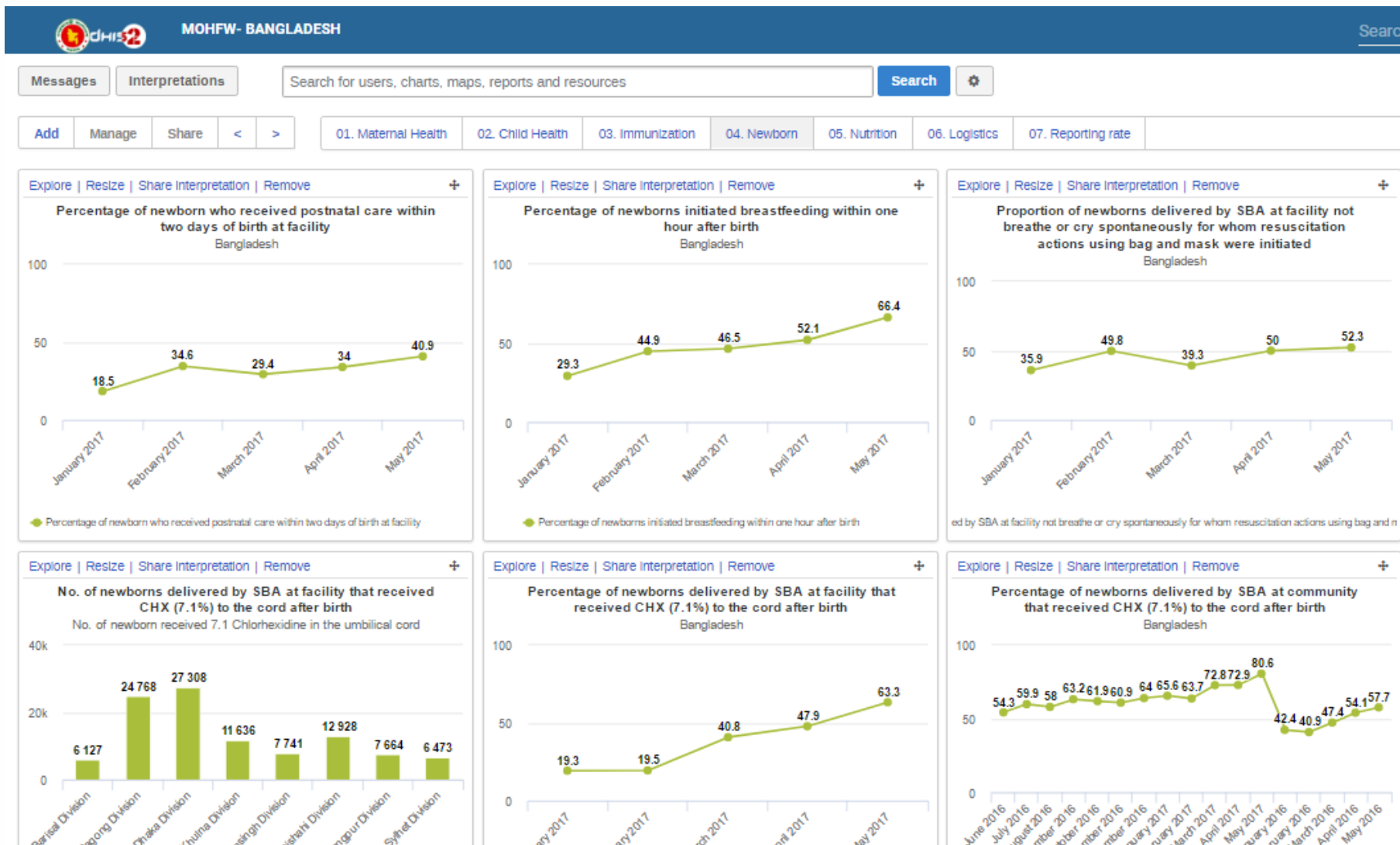
Rank	Upazila Health Complex
1	Kumarkhali Upazila Health Complex
2	Ramganj Upazila Health Complex
3	Sarsa Upazila Health Complex
4	Nawabganj Upazila Health Complex
5	Chowgacha Upazila Health Complex

Rank	District Hospital
1	Pirojpur District Hospital
2	Bhola District Hospital
3	Jhenaidah District Hospital
4	Lakshmipur District Hospital
5	Barguna District Hospital

Rank	Medical College Hospital
1	Shaheed Ziaur Rahman Medical College Hospital, Bogra
2	Dhaka Medical College Hospital
3	M Abdur Rahim Medical College Hospital
4	Sylhet MAG Osmani Medical College Hospital
5	Mymensingh Medical College Hospital

Rank	Specialty PG Institute & Hosp
1	National Institute of Neuro Sciences & Hospital (NINS & H)
2	National Institute of Diseases of the Chest & Hospital (NIDCH)
3	National Institute of ENT
4	Institute of Child and Mother Health, Matuail
5	National Institute of Kidney Disease and Urology

Dashboards: Newborn status in DHIS2



Dashboards: Health-Workforce

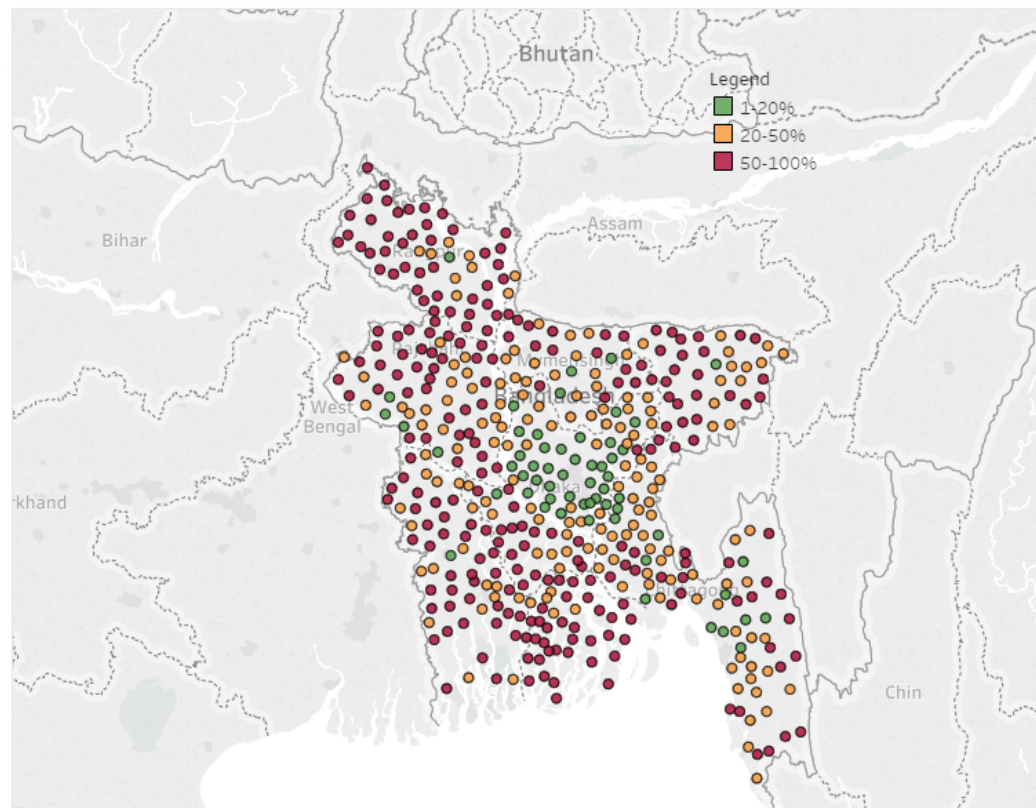
Upazila wise physician distribution from HRM

Home > Health Work Force

- Upazila-wise vacancy rate (%) of doctors
- Upazila-wise distribution of UHFPO
- Upazila-wise distribution of RMO
- Upazila-wise distribution of Jr. Consultants
- Upazila-wise distribution of Obs-Gyne & Anesthetist
- Upazila-wise distribution of Grade 9 doctors
- Upazila-wise distribution of 33rd BCS doctors
- Summary

Summary (Bangladesh)

Total Sanctioned	10,536
Total Available	5,437
Total Vacant	5,099
Vacancy (%)	48.4
RMO Available	207
UHFPO Available	454
Jr Consultant Sanctioned	2,702
Jr Consultant Available	1,079
Jr Consultant Vacant	1,623
Jr Consultant Vacancy (%)	60.1
Jr. Consultant Anesthetist Availab..	179
Jr. Consultant Obs-Gyne Available	220
Grade 9 Doctor Sanctioned	7,329
Grade 9 Doctor Available	3,886



Division Name

- ☒ (All)
- ☐ Barisal
- ☐ Chittagong
- ☐ Dhaka
- ☐ Khulna
- ☐ Mymensingh
- ☐ Rajshahi
- ☐ Rangpur
- ☐ Sylhet

District Name

- ☒ (All)
- ☐ Bagerhat
- ☐ Bandarban
- ☐ Barguna
- ☐ Barisal
- ☐ Bhola
- ☐ Bogra
- ☐ Brahmanbaria
- ☐ Chandpur
- ☐ Chapai Nawabga...

Upazila Name set

- ☒ (All)
- ☐ Abhaynagar
- ☐ Adamdighi
- ☐ Agailjhara
- ☐ Ajmiriganj
- ☐ Akhaura
- ☐ Akkelpur

Dashboards: Biometric Attendance System

Real time health information dashboard Directorate General of Health Services, Mohakhali Dhaka, Bangladesh

Attendance Summary * Some staffs work in roster. They might be available later.

Reporting Period 10/26/2017

10/26/2017

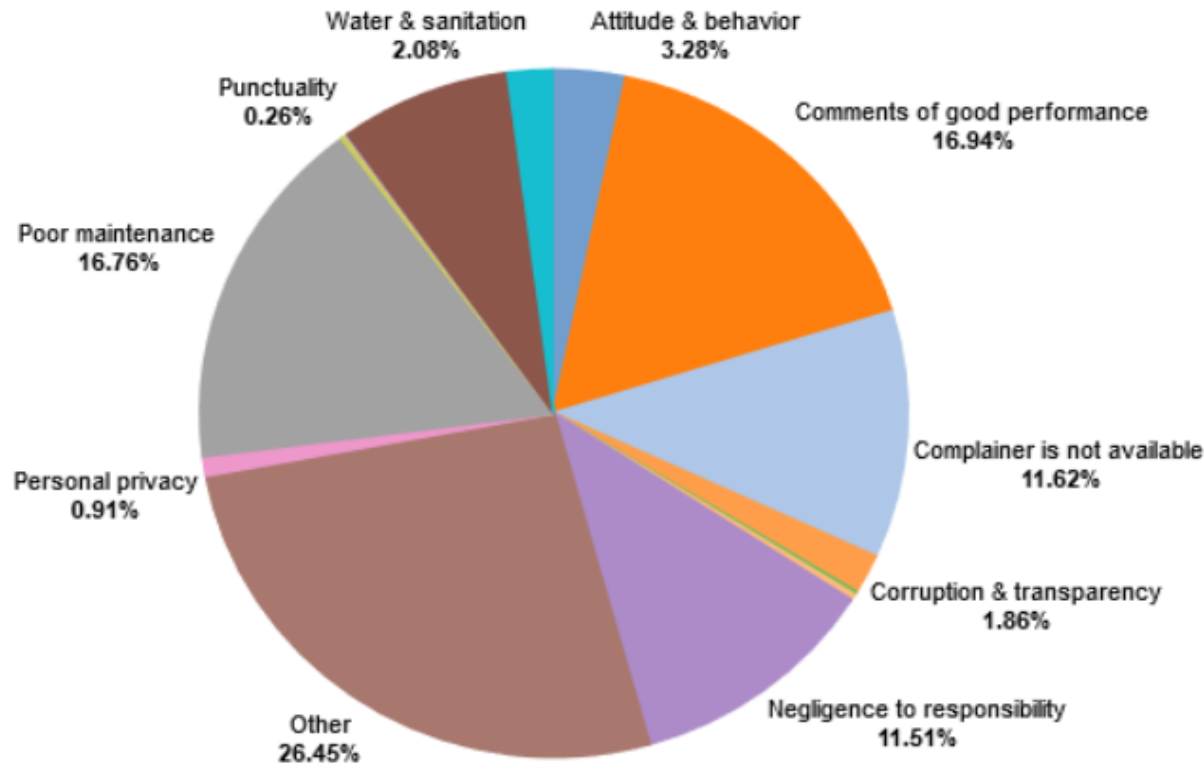
Search

last updated at October 26, 2017 10:10:10 am

S1	Division	Orgs. with functioning attendance system	Orgs. sending data	No. of Posts			Vacancy(%)	No. of staffs			Attendance* (%)	View
				Sanctioned	Filled	Vacant		Rgd. in attendance system	Present*	Absent		
1	Barisal	40	28	5,756	4,041	1,715	29.79	1,712	878	834	51.29	Trend
2	Chittagong	94	36	14,128	9,627	4,501	31.86	1,685	702	983	41.66	Trend
3	Dhaka	91	59	22,573	17,668	4,905	21.73	4,221	2,173	2,048	51.48	Trend
4	Khulna	60	47	8,947	6,116	2,831	31.64	3,122	1,577	1,545	50.51	Trend
5	Mymensingh	33	21	5,061	3,653	1,408	27.82	1,199	492	707	41.03	Trend
6	Rajshahi	64	28	9,495	6,940	2,555	26.91	1,515	722	793	47.66	Trend
7	Rangpur	58	25	7,675	5,532	2,143	27.92	1,428	598	830	41.88	Trend
8	Sylhet	36	19	5,009	3,138	1,871	37.35	969	455	514	46.96	Trend
	Total	476	263	78,644	56,715	21,929	27.88	15,851	7,597	8,254	47.93	

Dashboards: Complain and suggestion system by citizen

2017



Complain Source

- ☒ (All)
- ☐ MIS, DGH (SMS Based)
- ☐ Shashto Batayon(16263)...

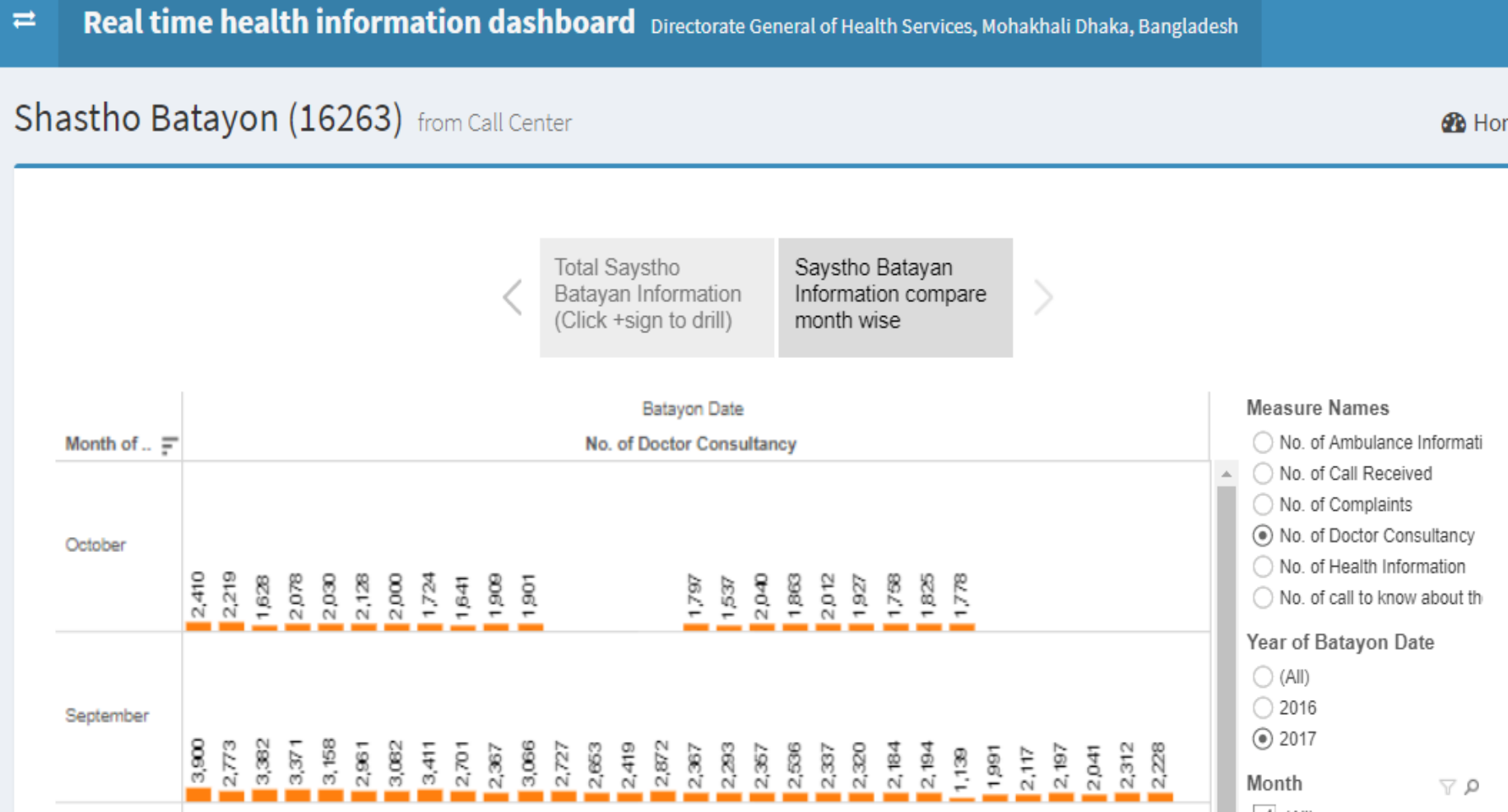
Complain Year

- ☐ (All)
- ☐ 2012
- ☐ 2013
- ☐ 2014
- ☐ 2015
- ☐ 2016
- ☒ 2017

Complain Type Name

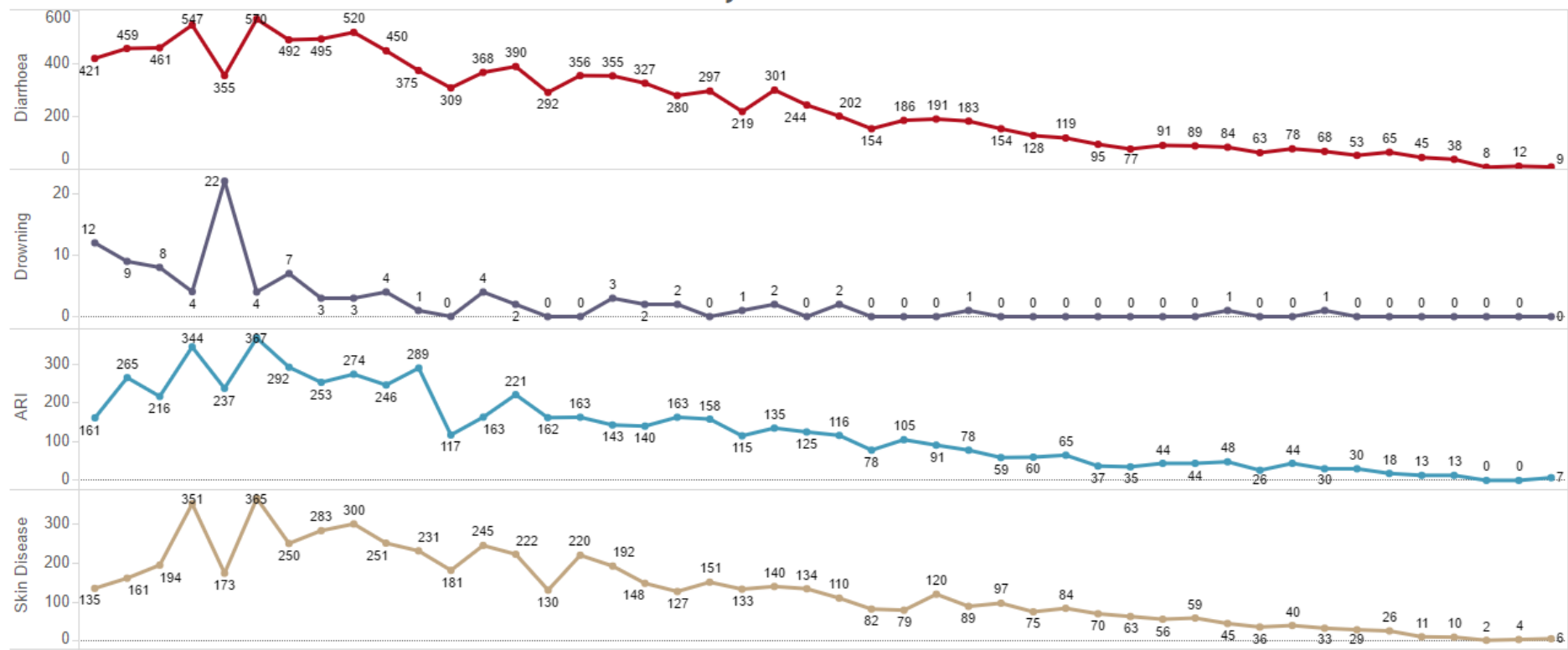
- Attitude & behavior
- Comments of good perfo...
- Complainer is not available
- Corruption & transparency
- Equity & discrimination
- Food quality
- Negligence to responsibi...
- Other
- Personal privacy
- Poor maintenance
- Punctuality
- Security
- Service
- Water & sanitation

Dashboard: 24/7 call center: 16263



Emergency Preparedness management by DHIS2

Trend Analysis: No. of affected



ng affected:0 || No. of drowning death:0 || No. of injury trauma affected:6 || No. of injury trauma death:0 || No. of skin disease affected:20

<http://103.247.238.81/webportal/pages/flood.php>

Status report of Rohingya influx from Myanmar in Cox's Bazar

Unregistered Rohingya Myanmar Nationals in Bangladesh Health situation & Interventions Update Date: 02 November 2017



603,000

Total new influx Since 25 August 2017



40% in 3 settlements

Balukhali, Leda & Kutupalong makeshift settlements

Health Interventions

MR Vaccine	Oral Polio Vaccine	Vitamin A	Oral Cholera Vaccine	SAM	MAM
135,519	72,334	72,064	700,487	4,079	9,628
No. of population aged 1 to 15 year received	No. of U5 children received	No. of U5 children received	1 years and above	Reported from medical camp	Reported from medical camp

Cumulative number of medical consultations given for different diseases

Diarrhoea	RTI	Injury	Skin Infection	ANC	PNC
44,586	62,978	6,435	26,194	6,383	659

Support to develop DHIS2 e-Learning platform

dhis2

Search courses



Home

Courses ▾

Contact

eLearning Course on District Health Information System(DHIS2)



What is DHIS2?

DHIS 2 is a tool for collection, validation, analysis, and presentation of aggregate statistical data, tailored (but not limited) to integrated health information management activities. It is a generic tool rather than a pre-configured database application, with an open meta-data model and a flexible user interface that allows the user to design the contents of a specific information system without the need for programming. DHIS2 is a modular web-based software package built with free and open source Java frameworks with interoperability between users and programs.

Capacity strengthening of Health Managers, Statisticians and IT focal for evidence use



- More than 700 personnel) in last two years
- Monthly review meeting : divisional, District, and sub-district
- National Weekly meeting with Line directors through Skype calls

Data visualization: how it helps managers

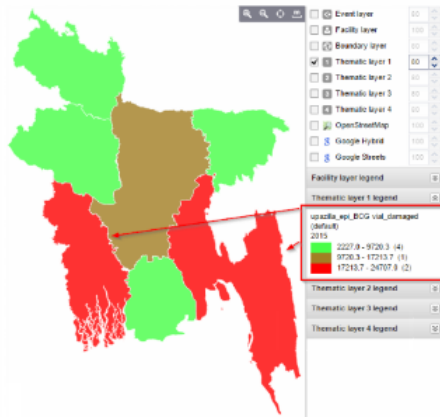


It is possible for health manager to examine

- Completeness of data
- Accuracy of data
- Monitor OP indicators
- Track own performances
- Find bottleneck
- Compare facilities
- Immediate action

Data for action

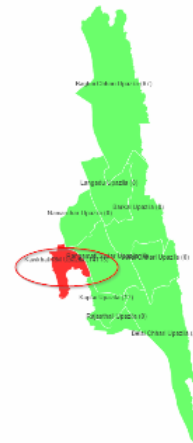
LD's Dashboard



Divisional Dashboard



District Dashboard



Upazila Dashboard

Drill down

Periods / Operand	upazila_epi_BCG vial_damaged (default) #	Total #
February 2015	0	0
March 2015	2 016	2 016
April 2015	2 016	2 016
May 2015	2 016	2 016
June 2015	2 016	2 016
July 2015	2 016	2 016
August 2015	2 016	2 016
October 2015	2 017	2 017
Total	14 113	14 113

Director's Office
Monthly Meeting



Chittagong
Divisional Director Office
Monthly Meeting



Civil Surgeon Office
Rangamati
Monthly Meeting



UH&FPO Kawkhali
Monthly Meeting



Immediate outcomes

- ❑ Dashboards improves accountability of health leaders for data-driven decision making
- ❑ Local Health Bulletin enhances review of program activities using data
- ❑ Online scoring of Health Facilities enhances competition to improve services
- ❑ Training of Health Managers on data analysis and use of information improved data quality
- ❑ Rate of reporting improved from 60% to 95% in the last two years
- ❑ Regular analysis and feedback improved completeness and accuracy of data in the last two years

DGHS is on way to SDG monitoring

⇌ **Real time health information dashboard** Directorate General of Health Services, Mohakhali Dhaka, Bangladesh

Status of SDG health indicators - Bangladesh

🏠 Home

Bangladesh has initiated real time monitoring system for health related SDG indicators. This dashboard visualizes both survey and routine health data from more than 14,000 public health facilities in Bangladesh.

3.1 Maternal Mortality



3.2 Newborn and child mortality



3.3 Communicable diseases



3.4 Noncommunicable diseases and mental health



3.5 Substance abuse



3.6 Road traffic injuries



3.7 Sexual and reproductive health



3.8 Universal health coverage



However, challenges still remain

- Culture of data use by health managers and doctors are still poor
- Lack of staff (stop-gap management)
- Cost to replacing and buying tablets, laptops and computers and pay for internet connection
- Weak supervision and M&E systems
- Fragmented data storage system by different institutions (DGHS & DGFP)

Recommendations

- Ongoing capacity development activities should be continuing in upcoming sector plan
- Basic statisticians need to be recruited
- Additional HR training to support statistician (Sr. staff nurse)
- Establishing accountability through reward, recognition & punishment
- Develop new module for covering all health programs including Health Financing tracking
- There is need for change of mind set-up and change of culture particularly for top managers

This project has been funded



**by European Union (EU) at icddr,b as SHARE project
(Strengthening Health Applying Research Evidence)**

icddr,b thanks its core donors for their on-going support



Government of the People's
Republic of Bangladesh

Canada

