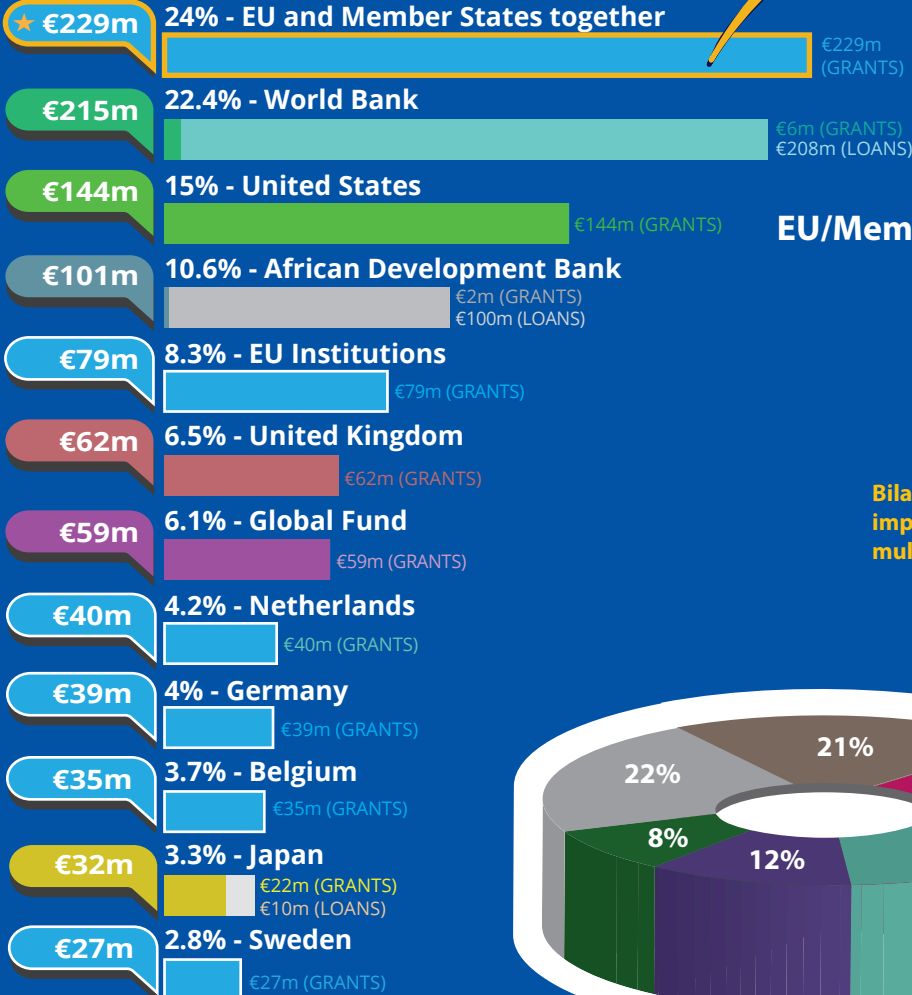




Rwanda's partners in 2018*



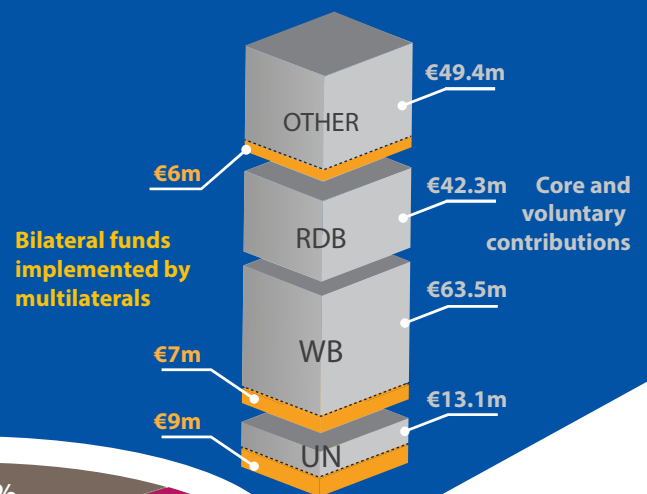
Other present EU/MS
Austria, Finland, France, Ireland, Italy, Luxembourg, Poland, Slovak Republic, Slovenia and Spain.

€397m
Total EU /
Member States
ODA

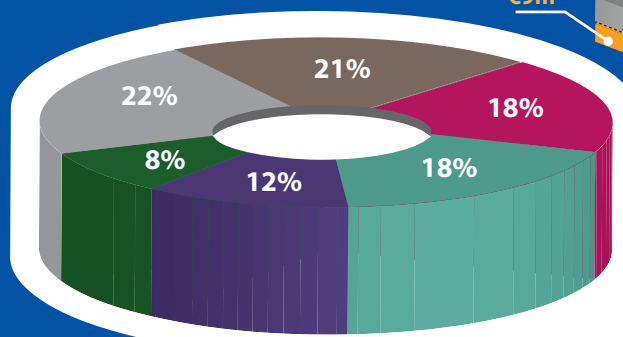
€229m EU/Member
States together
24% of global
bilateral flows

EU/MS
multilateral
core and
voluntary
contributions
€168m

EU/Member States funds through multilaterals



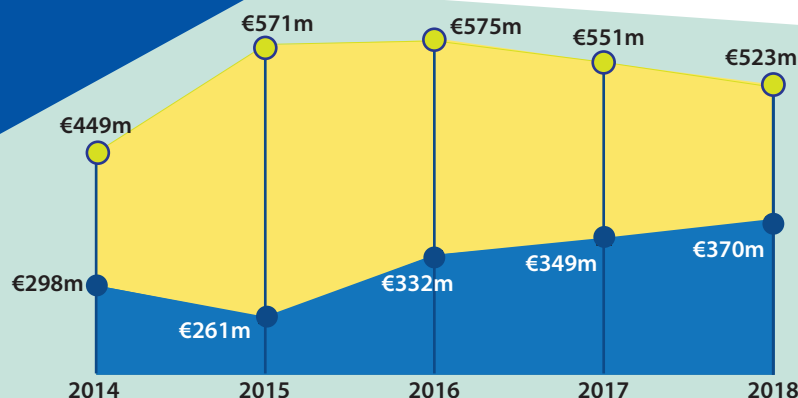
Bilateral funds
implemented by
multilaterals



The main sectors funded by the EU/Member States

- Energy
- Agriculture, Fishing, Forestry
- Government & Civil Society
- Multi-Sector / Cross-Cutting
- Health
- Other

*Based on ODA disbursements
in the particular year.



EU/Member States ODA trends 2014-2018 (€)

■ EU / Member States
■ All other DAC providers

For more information contact:

EEAS JOINT PROGRAMMING:
joint-programming-support@eeas.europa.eu

EU AID EXPLORER:
<https://euaidexplorer.ec.europa.eu>

DEVCO JOINT PROGRAMMING:
devco-joint-programming-support@ec.europa.eu

NEAR JOINT PROGRAMMING
NEAR-JOINT-PROGRAMMING@ec.europa.eu

Sources:

OECD DAC CRS
IMF WEO 2018 Database

Exchange rate: \$1 = €0.8473
(OECD exchange rate for 2018)

JOINT PROGRAMMING TRACKER:

<https://europa.eu/capacity4dev/joint-programming-tracker>

Note: EU/MS refers to the EU and its Member States together.

Differences between figures for total EU/MS ODA and ODA trends are due to use of different OECD data sources (with higher level of granularity in 2018).

RDBs = Regional Development Banks.





Investing in Sustainable Development in Rwanda



GDP €8.1bn ↑

GDP per capita
Fiscal position

€654.9 ↑
-3.1% ↓ *



Population 12.30m ↑

Poverty head count ratio at national poverty line 38.2% ↓
Multidimensional poverty 54.4% ↓
GINI index 43.7 ↓

Human Development Index (UN)

Index 0.54 ↑
Ranking (of 189 countries) 157

Low Income Country (World Bank classification)
Least Developed Country (UN classification)

Trade figures (% of GDP)

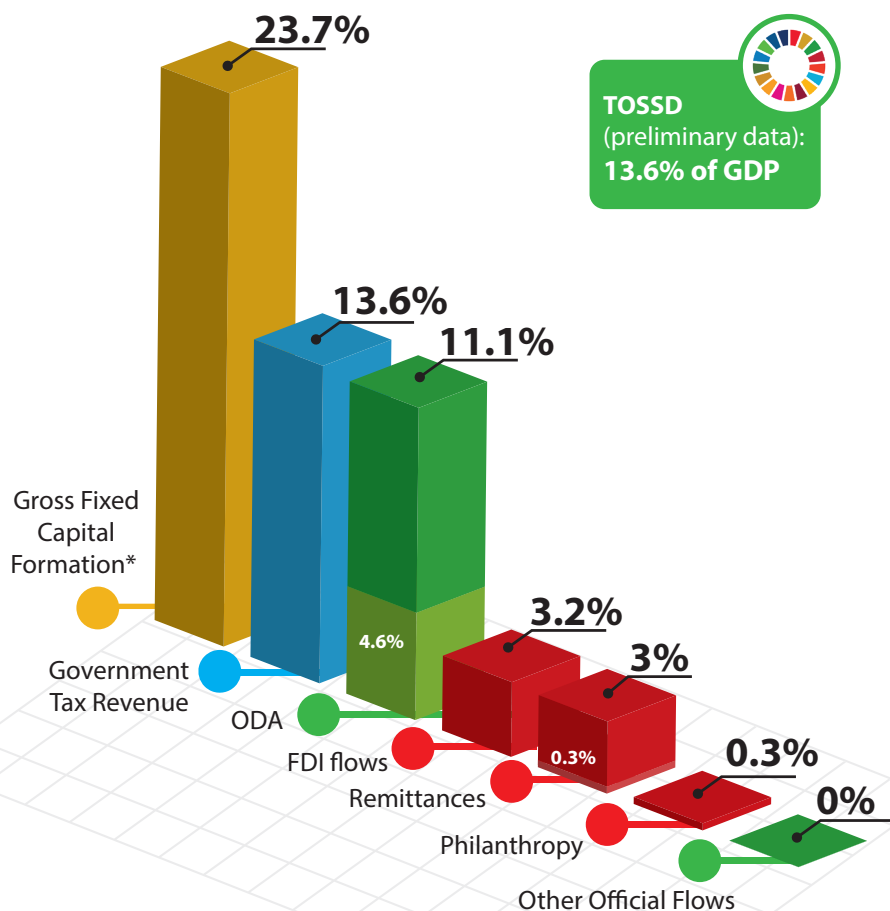
Imports of goods 21.4 ↓
Exports of goods 11.8 ↑
Imports of services 11.3 ↑
Exports of services 9.6 ↑

Ease of doing business index

Index 76.5 ↑
Ranking (of 190 countries) 38

* Compared to average of previous years

Financing for Development as % share of GDP



External debt stock

€4.7bn

Multilaterals

45.5%

Private

32.8%

Non-Paris 20.3%

Paris 1.4%

Bilateral

21.7%

Total Debt as share of GDP **57.7%**

Total Debt servicing as share of GDP **2.7%**



For more information contact:

EuropeAid-FINANCING-FOR-SUSTAINABLE-DEVELOPMENT@ec.europa.eu

Exchange rate: \$1 = €0.8473
(OECD exchange rate for 2018)

Sources:

OECD DAC CRS, World Bank WDI
UNDP, EDGAR, JRC, World Bank
Remittances database, Eurostat
and IMF External Debt Statistics

Note: EU/MS refers to the EU and Member States together

For more information on TOSSD: www.tossd.org

*Measure of total investment in the domestic economy (overlap with FDI possible)

Paris refers to debts to the Paris Club of creditors (22 countries)

